



Offering Summary

Lease Rate:	Negotiable
NNN's:	Approx. \$10.50 PSF
Available SF:	1,944 SF
Year Built:	2014
Zoning:	B-3
Market:	Southwest Chicago
Parking:	64 Surface Level Spaces
Traffic Count:	Approx. 33,800 VPD

Property Overview

1,944 SF available for lease at 245 S. Weber Road in Romeoville. The storefront is located within a multi-tenant out lot building fronting The Ovation Center, anchored by Kohl's and Dollar Tree, and features a spacious interior, excellent frontage along Weber Road with visibility and exposure to approx. 33,800 VPD, and dual-sided monument signage. Opportunity to join co-tenants Chipotle, Dunkin', and E Zee Urgent Care in addition to a diverse lineup of national retailers along Weber Road including: Walmart SuperCenter, Jewel Osco, Aldi, T.J. Maxx, Discovery Clothing, Petco, DaVita Dialysis, Blain's Farm and Fleet, Sally's Beauty, Starbucks, Jersey Mike's and Verizon, and many others.

Property Highlights

- Outlot Opportunity fronting Kohls and Dollar Tree along Weber Road (33,800 VPD) in Romeoville
- Co-tenants include Chipotle, Dunkin', and E Zee Urgent Care
- Other retailers within the larger development include Pizza Hut, Chilis, AT&T, and Fifth Third Bank
- Dual-sided monument signage offers excellent exposure along Weber Road

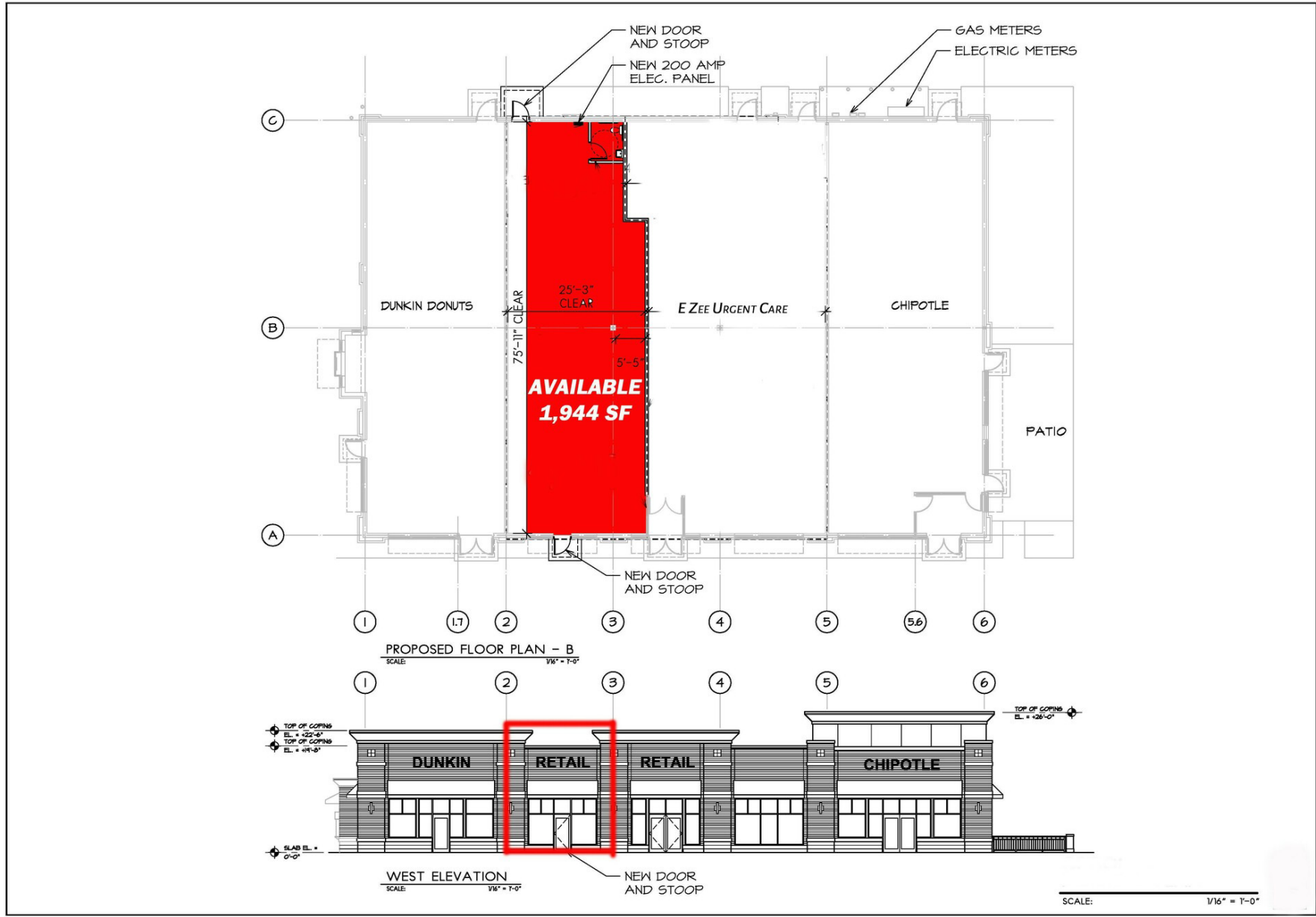
Matthew Tarshis
Principal
847.780.8063
mtarshis@frontlinerepartners.com

Zack Pearlstein
Senior Vice President
847.275.6106
zpearlstein@frontlinerepartners.com

Andrew Rubin
Executive Vice President
224.628.4005
arubin@frontlinerepartners.com

Andrew Picchiatti
Vice President
847.602.2005
apicchiatti@frontlinerepartners.com

Andrew Slovis
Associate Broker
847.989.6020
aslovis@frontlinerepartners.com



Matthew Tarshis
Principal
847.780.8063
mtarshis@frontlinerepartners.com

Zack Pearlstein
Senior Vice President
847.275.6106
zpearlstein@frontlinerepartners.com

Andrew Rubin
Executive Vice President
224.628.4005
arubin@frontlinerepartners.com

Andrew Picchietti
Vice President
847.602.2005
apicchietti@frontlinerepartners.com

Andrew Slovis
Associate Broker
847.989.6020
aslovis@frontlinerepartners.com



Map data ©2025 Google Imagery ©2025 Airbus, Landsat / Copernicus, Maxar Technologies, Vexcel Imaging US, Inc.

Matthew Tarshis
Principal
847.780.8063
mtarshis@frontlinerepartners.com

Zack Pearlstein
Senior Vice President
847.275.6106
zpearlstein@frontlinerepartners.com

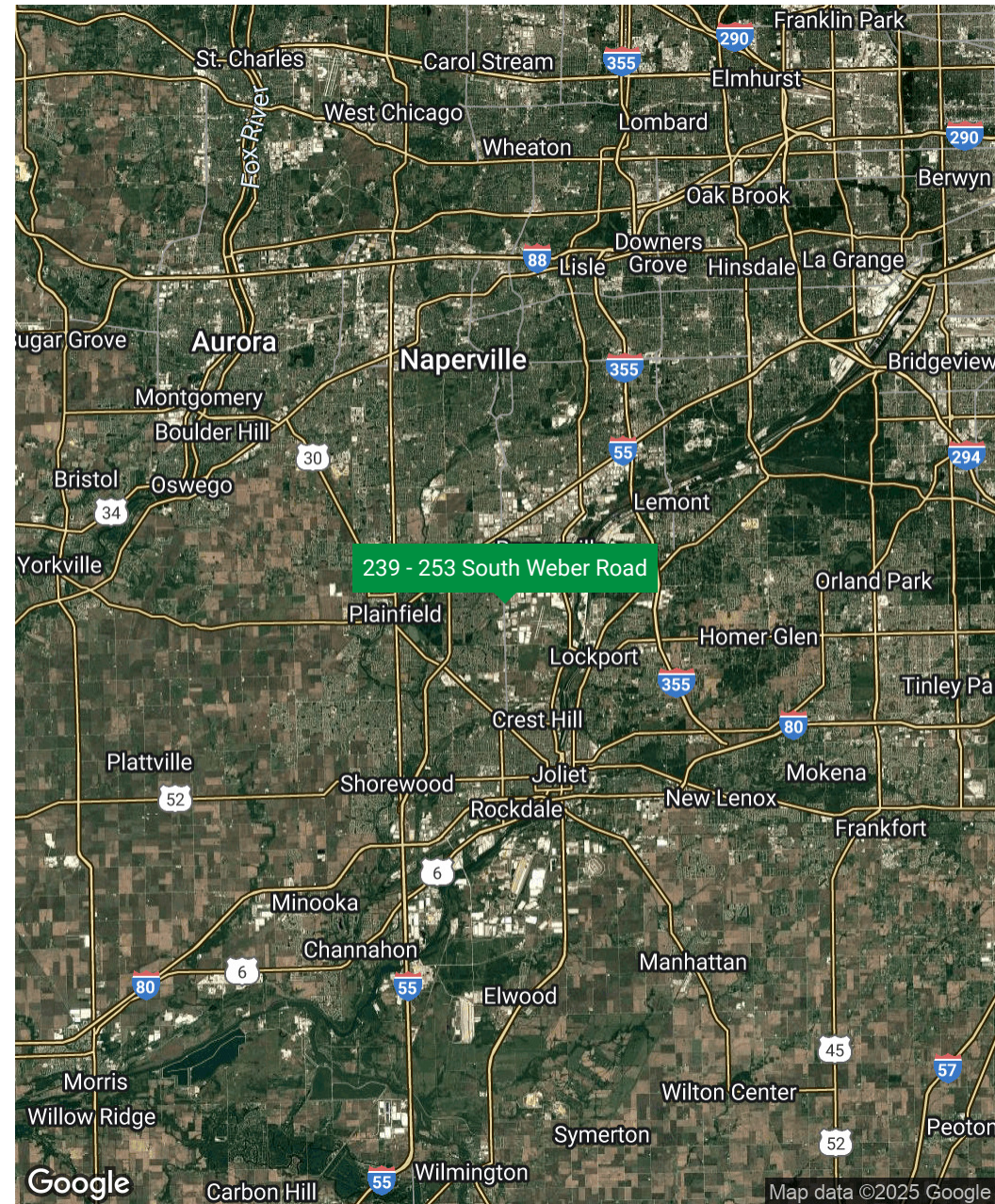
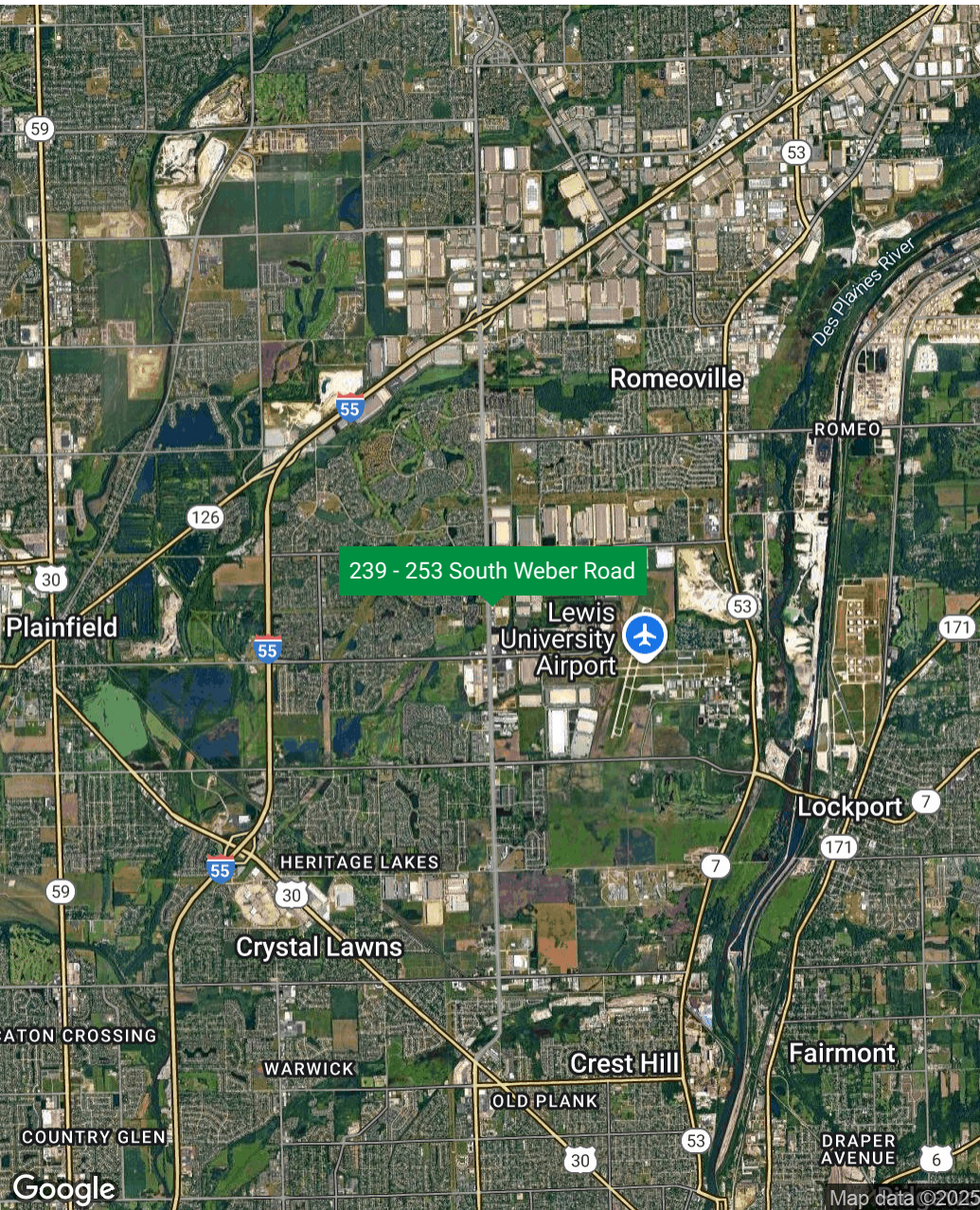
Andrew Rubin
Executive Vice President
224.628.4005
arubin@frontlinerepartners.com

Andrew Picchiatti
Vice President
847.602.2005
apicchiatti@frontlinerepartners.com

Andrew Slovis
Associate Broker
847.989.6020
aslovis@frontlinerepartners.com

FOR LEASE | 245 SOUTH WEBER RD

LOCATION MAP



Matthew Tarshis
Principal

847.780.8063
mtarshis@frontlinerepartners.com

Zack Pearlstein
Senior Vice President

847.275.6106
zpearlstein@frontlinerepartners.com

Andrew Rubin
Executive Vice President

224.628.4005
arubin@frontlinerepartners.com

Andrew Picchiatti
Vice President

847.602.2005
apicchiatti@frontlinerepartners.com

Andrew Slovis
Associate Broker

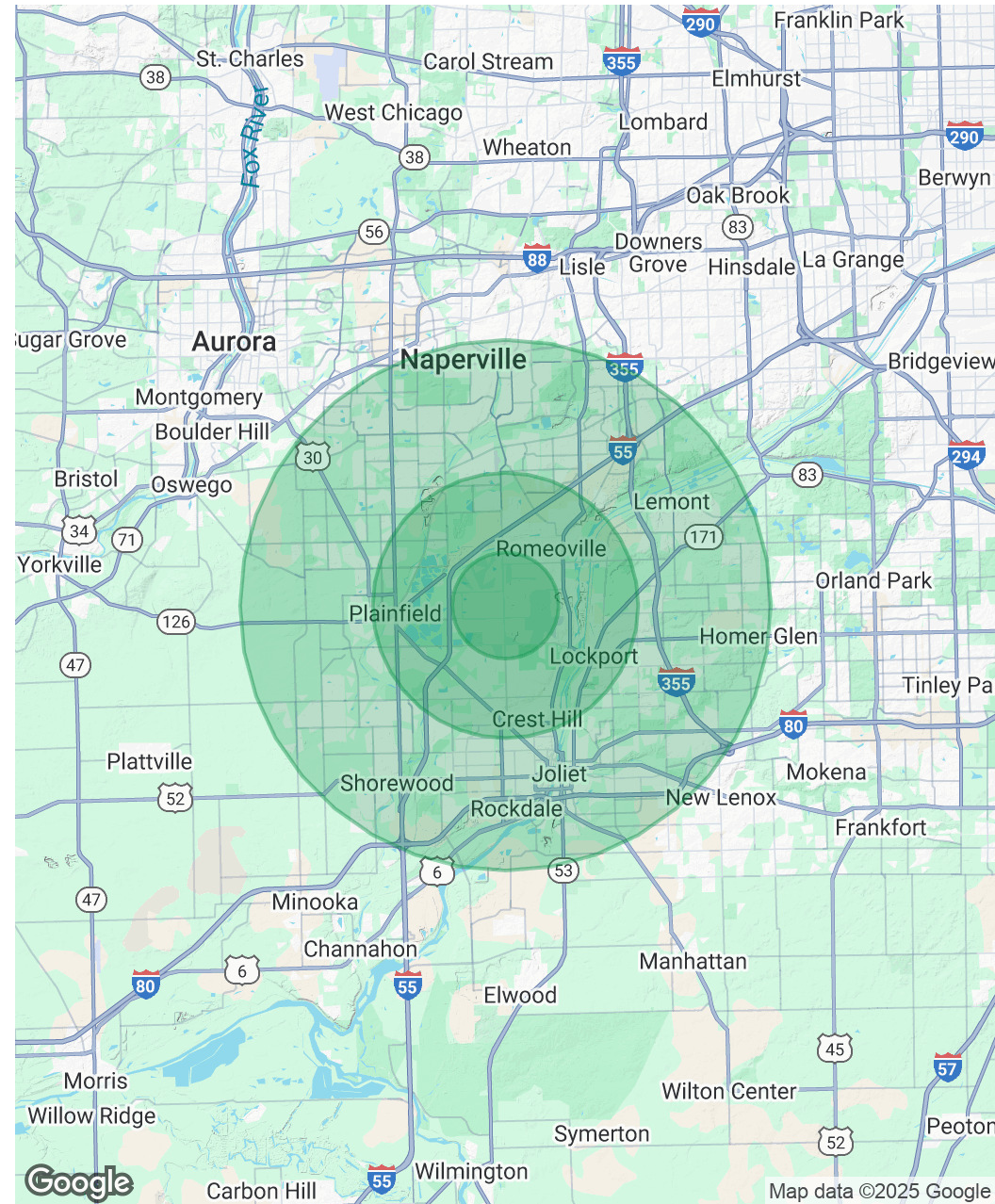
847.989.6020
aslovis@frontlinerepartners.com

Population	2 Miles	5 Miles	10 Miles
Total Population	35,357	140,910	576,833
Average Age	41	40	39
Average Age (Male)	40	39	38
Average Age (Female)	42	41	40

Households & Income	2 Miles	5 Miles	10 Miles
Total Households	12,695	48,981	199,169
# of Persons per HH	2.8	2.9	2.9
Average HH Income	\$107,121	\$123,398	\$139,399
Average House Value	\$278,889	\$304,055	\$361,122

Race	2 Miles	5 Miles	10 Miles
% White	46.7%	53.7%	55.6%
% Black	16.4%	13.7%	11.8%
% Asian	7.8%	7.4%	10.2%
% Hawaiian	0.0%	0.0%	0.0%
% American Indian	0.8%	0.8%	0.7%
% Other	13.9%	11.3%	9.9%

Demographics data derived from AlphaMap



Matthew Tarshis
Principal
847.780.8063
mtarshis@frontlinerepartners.com

Zack Pearlstein
Senior Vice President
847.275.6106
zpearlstein@frontlinerepartners.com

Andrew Rubin
Executive Vice President
224.628.4005
arubin@frontlinerepartners.com

Andrew Picchietti
Vice President
847.602.2005
apicchietti@frontlinerepartners.com

Andrew Slovis
Associate Broker
847.989.6020
aslovis@frontlinerepartners.com

FOR LEASE | 239 - 253 SOUTH WEBER ROAD

ADDITIONAL PHOTOS



Matthew Tarshis
Principal

847.780.8063
mtarshis@frontlinerepartners.com

Zack Pearlstein
Senior Vice President

847.275.6106
zpearlstein@frontlinerepartners.com

Andrew Rubin
Executive Vice President

224.628.4005
arubin@frontlinerepartners.com

Andrew Picchietti
Vice President

847.602.2005
apicchietti@frontlinerepartners.com

Andrew Slovis
Associate Broker

847.989.6020
aslovis@frontlinerepartners.com