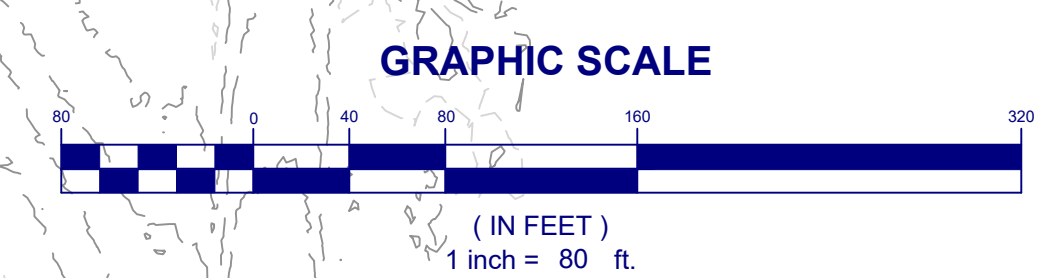
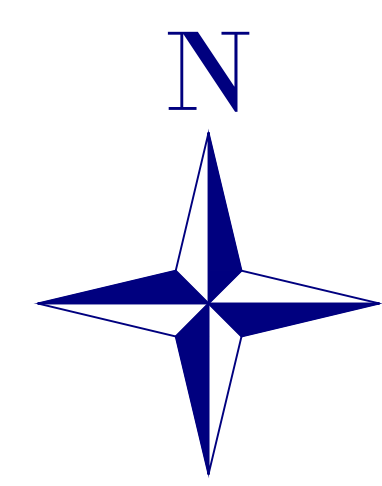
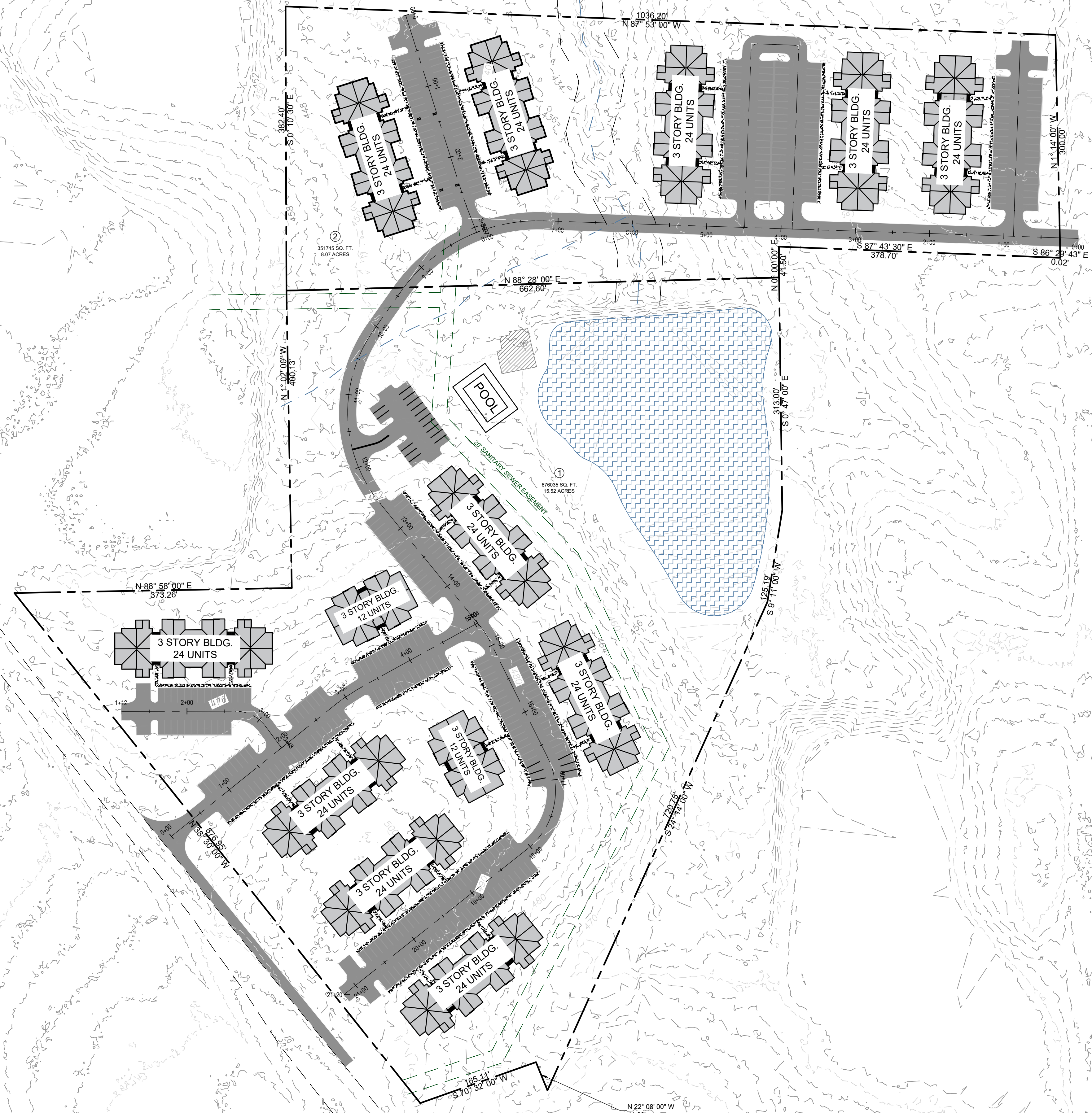


**DEVELOPMENT DATA:**

DEVELOPER: CER FARMS, LLC.  
 SITE AREA: ±15.52  
 ±8.07  
 LOCATION: 5817 THOMASTON RD.  
 MACON, GEORGIA 31220  
 LAND LOT 37 AND 38 OF DISTRICT 4  
 TAX PARCELS: J007-0033  
 J007-0075  
 ZONING: A  
 TOTAL UNITS: 288  
 DENSITY: 10.83 UNITS/ACRE (GROSS)  
 14.87 UNITS/ACRE (GROSS)  
 PARKING: 1.5 SPACES PER UNIT, MIN.  
 ENGINEER: ROWLAND ENGINEERING, INC.  
 318 CORPORATE PKWY., STE 301  
 MACON, GA 31210  
 (478) 621-7500  
 steven@rowland-engineering.com



TUCKER CHASE APARTMENTS  
 5817 THOMASTON RD., MACON, GA 31220  
 LAND LOT 37 AND 38, DISTRICT 4, BIBB CO.  
 FOR  
 CER FARMS, LLC

**ROWLAND**  
 ENGINEERING  
 318 Corporate Pkwy, Ste. 301  
 Macon, GA 31210  
 (478) 621-7500 office  
 steven@rowland-engineering.com  
 www.rowland-engineering.com

PROJECT NO: 2318  
 GA LEVEL II CERTIFIED DESIGN  
 PROFESSIONAL #15  
 EXPIRES 07-16-2023



THIS SEAL IS VALID ONLY IF SIGNED AND DATED BY THE LICENSED PROFESSIONAL SHOWN.

GRADING AND DRAINAGE PLAN

C-0.1  
 SHEET --- OF XX

R:\Projects\2318 - Thomaston Rd Apartments - Macon\Bibb Co\2318-PLAN\2.dwg, C.O.1, Robbey, Aug 16, 2023, 11:48:23am