



**Representative Image*

Office/Warehouse - Tract D

Legacy Range Business Park: 3201 116th Street, Lubbock, TX 79423

Property Features

This 5,000 SF office/warehouse space within Legacy Range Business Park offers a flexible solution in a prime South Lubbock location, just off 116th Street with immediate access to Indiana Avenue and major arterial roadways. Designed to accommodate a wide range of users, the space features a functional mix of office and warehouse components that can be tailored to fit operational needs. Located within a well-planned business park in one of Lubbock’s fastest-growing corridors, this property provides excellent accessibility, modern functionality, and an ideal setting for businesses looking to expand or establish a presence in the market.

Offering Summary

SPACE AVAILABLE	5,000 SF
TRACT	D
LEASE RATE	\$13/SF NNN
AVAILABLE	Q3 2026

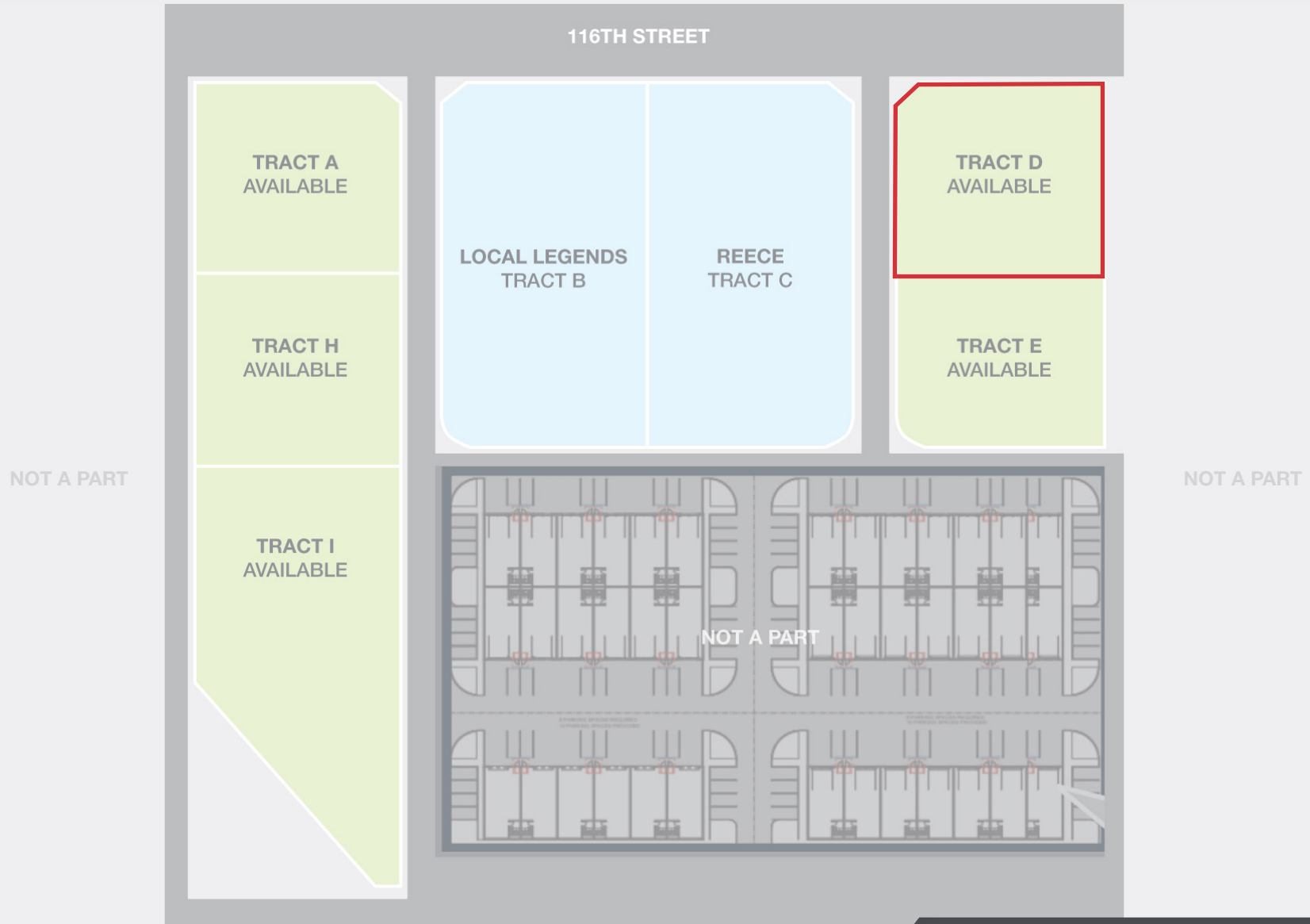
NO WARRANTY OR REPRESENTATION, EXPRESS OR IMPLIED, IS MADE AS TO THE ACCURACY OF THE INFORMATION CONTAINED HEREIN, AND THE SAME IS SUBMITTED SUBJECT TO ERRORS, OMISSIONS, CHANGE OF PRICE, RENTAL OR OTHER CONDITIONS, PRIOR SALE, LEASE OR FINANCING, OR WITHDRAWAL WITHOUT NOTICE, AND OF ANY SPECIAL LISTING CONDITIONS IMPOSED BY OUR PRINCIPALS NO WARRANTIES OR REPRESENTATIONS ARE MADE AS TO THE CONDITION OF THE PROPERTY OR ANY HAZARDS CONTAINED THEREIN ARE ANY TO BE IMPLIED.

Jax Collier
jax@naiwheelhouse.com
 +1 325 207 6118
naiwheelhouse.com

Joseph Magby
joe@naiwheelhouse.com
 +1 806 200 3244
naiwheelhouse.com

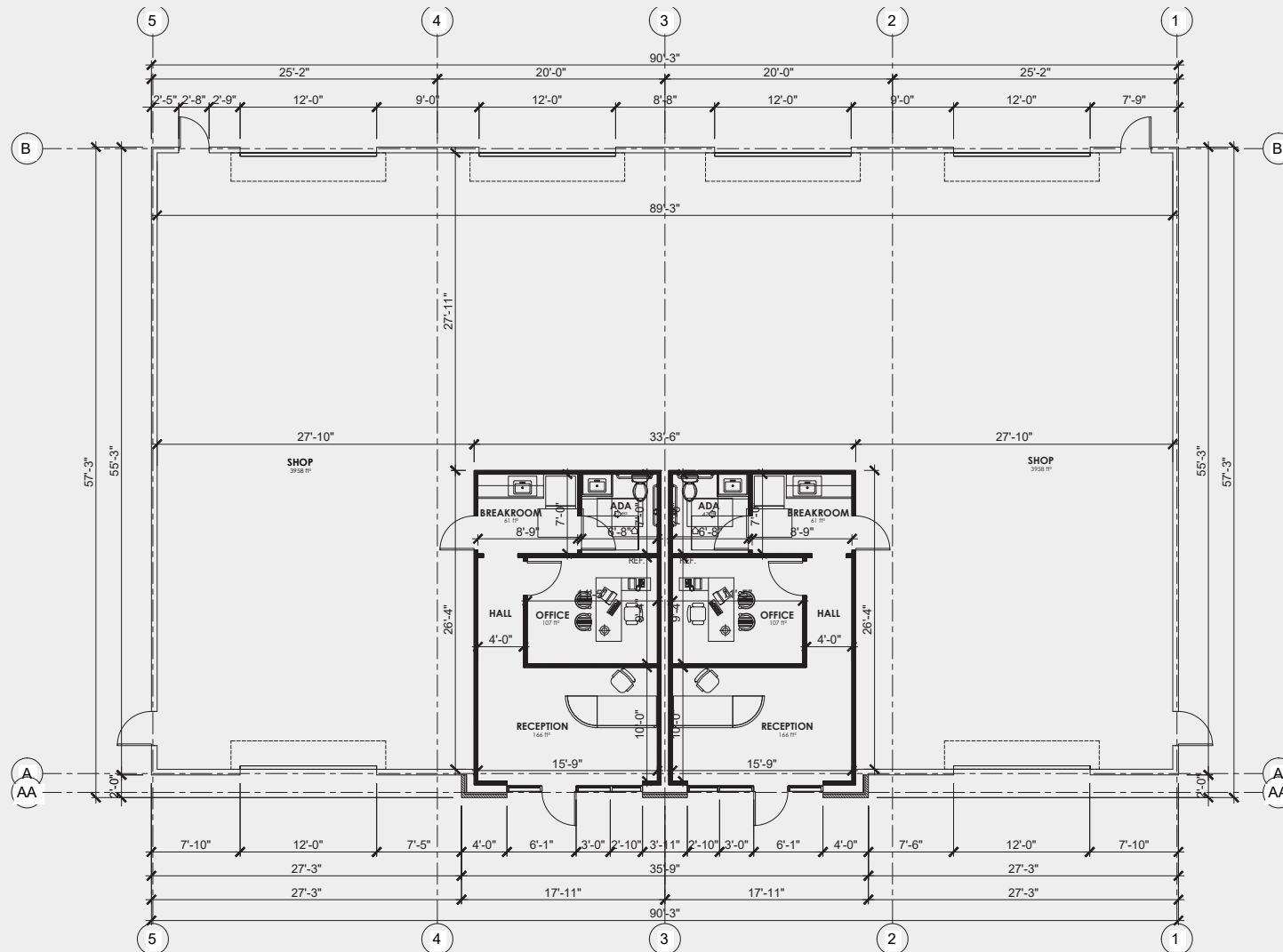
FOR LEASE

The Property



FOR LEASE

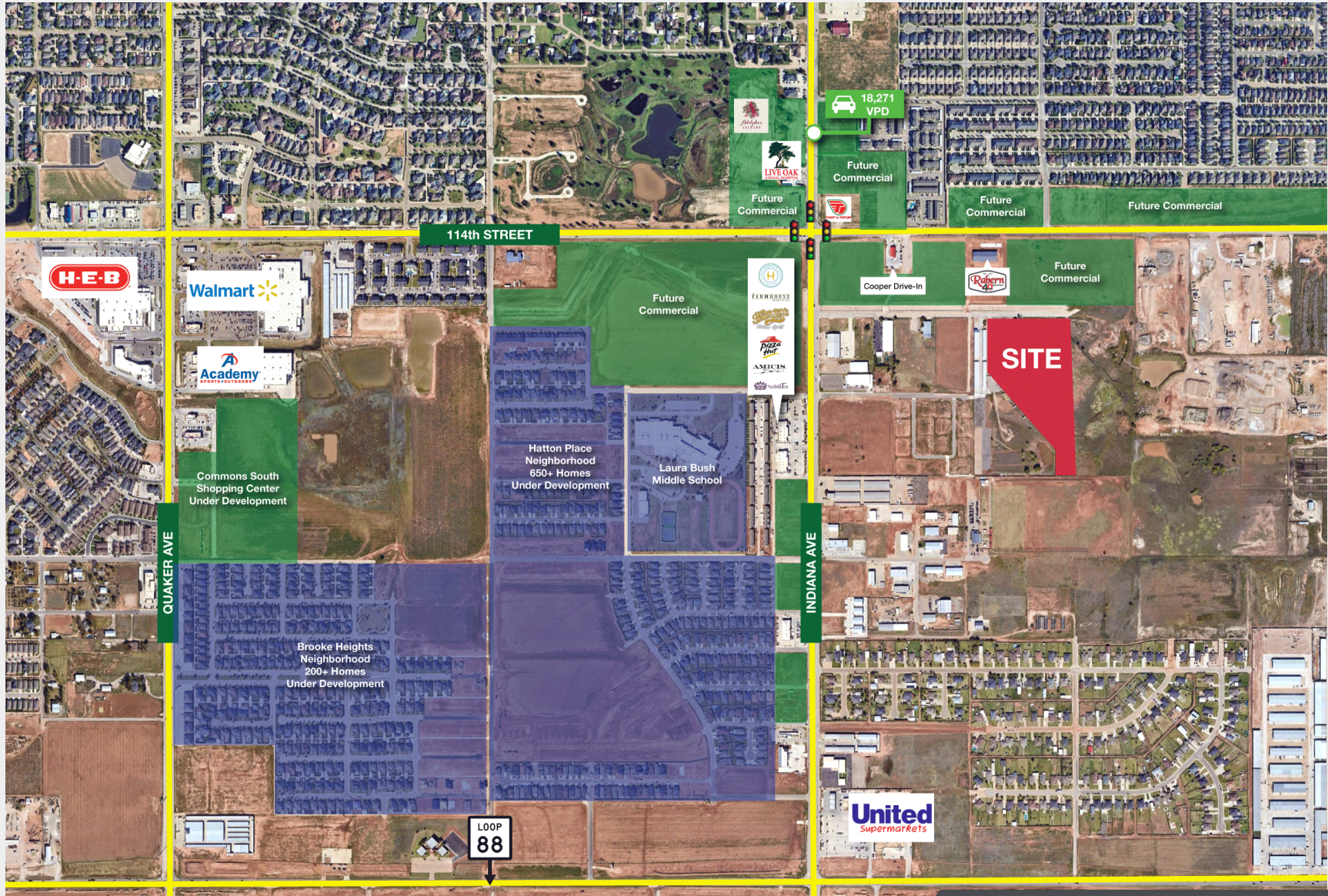
The Property



01 FLOOR PLAN
SCALE: 1/4" = 1'-0"

FOR LEASE

The Area



FOR LEASE

Representative Renderings

