

For Lease

# Retail Property

5 Suites | \$10/SF NNN



## Emporia West Plaza

1312 Industrial Road, Emporia, Kansas 66801

### Property Details

- Suite 30: 1,625 SF - Open layout with 2 restrooms & small storage room.
- Suite 50: 1,625 SF - Open layout in vanilla-box condition with 1 restroom.
- Suite 100: 4,221 SF - Restaurant Space with cooler.
- Suite 110: 2,108 SF - Retail Space - Former Cellular Store.
- Suite 130: 3,500 SF - Former taekwondo space.
- Asking Rate: \$10/SF NNN (Estimated NNN's: \$5.00/SF)

### Property Description

Emporia West Plaza is located on Industrial Road north of the signalized intersection of Industrial Road and West 12th Avenue. This 75,703-square foot, multi-tenant retail center is located in the primary retail corridor of Emporia. Anchored by Tractor Supply, El Rio Bravo Supermarket, Dollar General, Rent-A-Center, and a Tesla Charging Station.

### OFFERING SUMMARY

<b>Available SF</b>	1,625 SF to 4,704 SF
<b>Lease Rate</b>	\$10.00 SF/yr (NNN)
<b>Estimated NNN's</b>	\$5.00/SF
<b>Building Size</b>	75,703 SF

### DEMOGRAPHICS

Stats	Population	Avg. HH Income
<b>1 Mile</b>	4,131	\$52,896
<b>3 Miles</b>	21,567	\$44,875
<b>5 Miles</b>	32,557	\$42,438

For more information

**Colton Bartlett**

O: 316 425 5993  
cbartlett@naimartens.com

**Drew Gannon, CCIM**

O: 316 680 1108  
dgannon@naimartens.com



1330 E. Douglas Ave.,  
Wichita, KS 67214  
316 262 0000 tel  
naimartens.com



# Emporia West Plaza



For Lease

# Retail Property

5 Suites | \$10.00 SF/yr



Suite 30 - 1,625 SF



Suite 50 - 1,625 SF



Suite 100 - 4,221 SF



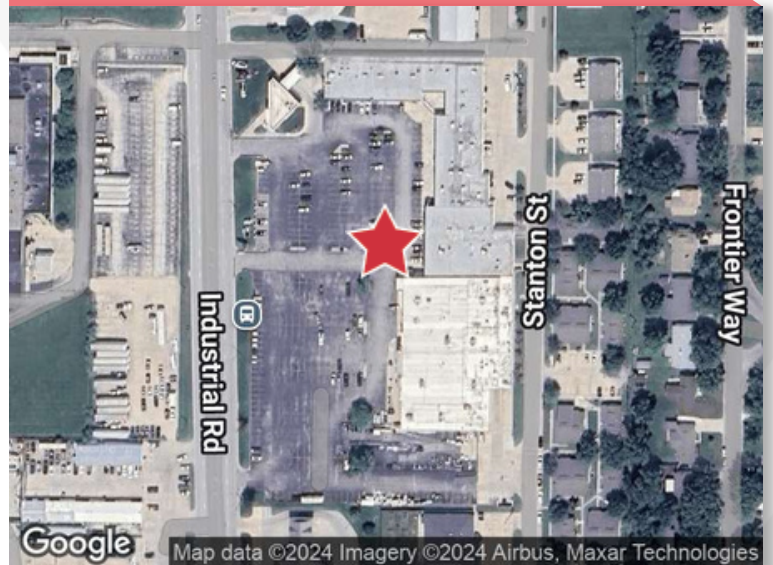
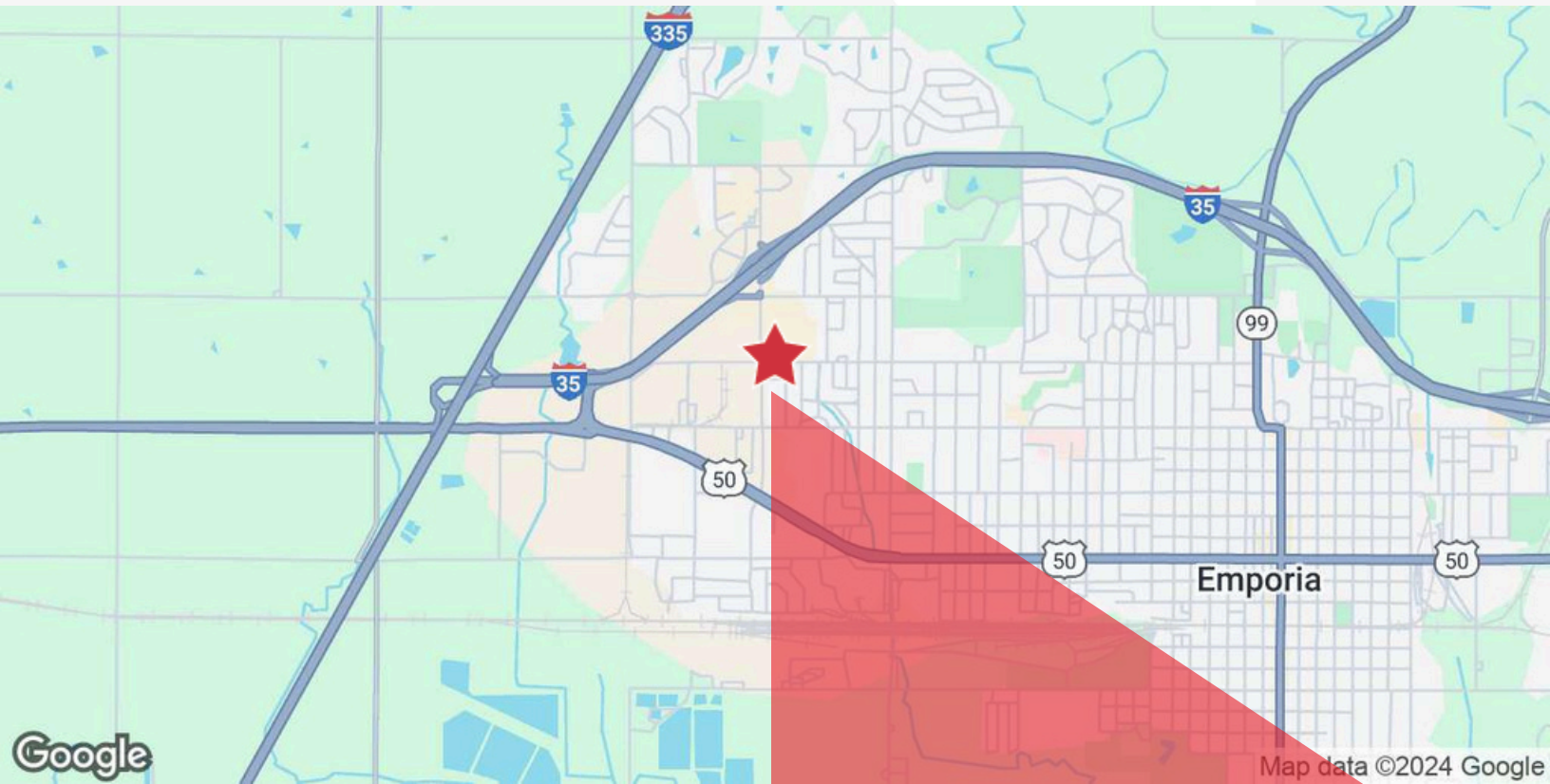
Suite 100 - 4,221 SF



Suite 110 - 2,108 SF

# Emporia West Plaza

1312 Industrial Road  
Emporia, Kansas 66801



For more information

**Colton Bartlett**

O: 316 425 5993 | [cbartlett@naimartens.com](mailto:cbartlett@naimartens.com)

**Drew Gannon, CCIM**

O: 316 680 1108 | [dgannon@naimartens.com](mailto:dgannon@naimartens.com)