

For Sale/Lease

**2290 W. Airport Blvd., Sanford, FL 32771**

1,750 - 7,000 SF | \$2,675.00 to \$10,675.00 per month



## 2290-2298 W. Airport Blvd.

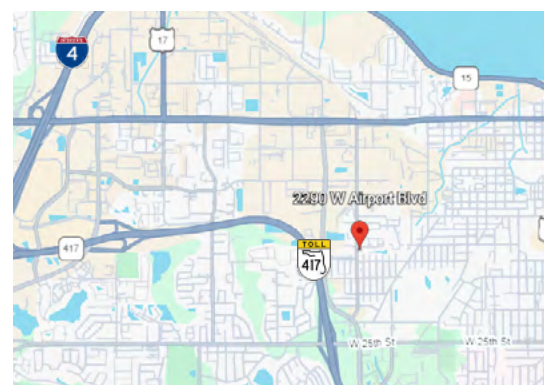
Sanford, Florida 32771

### Property Highlights

- Zoning: RI-1
- 3-Phase Power
- Ample On-Site Parking
- Clear Height:  $\pm 12'$
- Glass Entryways for Each Suite
- Grade-Level Roll-Up Doors Available
- Prominent Frontage with Excellent Visibility
- Excellent Access to Interstate 4 and State Road 417

#### AVAILABLE SPACES

Space	Lease Rate	Size (SF)
Suites 2292 to 2298	\$2,675 to \$10,675 per month	1,750 to 7,000
Suites 2292/2294	\$5,350 per month	3,500
Suite 2296 to 2298	\$2,675 to \$5,350 per month	1,750 to 3,500



**Lease Rate: \$15.00/SF NNN (OpEx: \$3.50/SF)**

**Sale Price: Unpriced (Call for details)**

For more information:

**Thevin Campton, CCIM**

C: 407.780.7123

thevin@cpprealty.com



**CAPITAL**  
PLACEMENT PARTNERS  
Commercial Investment Property Advisors

11.03.2025

The information contained herein has been obtained from sources believed to be reliable; however, we make no representations or warranties, express or implied, as to its accuracy or completeness. All information should be independently verified prior to any purchase or lease. Unless otherwise stated, the property is offered as is, where is, with all faults.

6900 Tavistock Lakes Blvd.,  
Orlando, Florida 32824  
407 780 7123  
[www.cpprealty.com](http://www.cpprealty.com)



# Property Photos



FRONT BUILDING AERIAL



REAR BUILDING AERIAL



LOBBY / RECEPTION



WAREHOUSE SPACE



TRAINING AREA



OFFICE CORRIDOR



**CAPITAL**  
PLACEMENT PARTNERS  
Commercial Investment Property Advisors

11.03.2025

The information contained herein has been obtained from sources believed to be reliable; however, we make no representations or warranties, express or implied, as to its accuracy or completeness. All information should be independently verified prior to any purchase or lease. Unless otherwise stated, the property is offered as is, where is, with all faults.

6900 Tavistock Lakes Blvd.,  
Orlando, Florida 32824  
407 780 7123  
[www.cpprealty.com](http://www.cpprealty.com)

# Available Spaces



SUITE	SIZE (SF)	LEASE TYPE	LEASE RATE	DESCRIPTION
2292-2294 W. Airport Blvd.	3,500 SF	NNN	\$5,350 per month	Large open work area with private offices with large training or bullpen area
2296 W. Airport Blvd.	1,750 SF	NNN	\$2,675 per month	Large conference or training room with warehouse, can be combined with Suite 2292-2294 or Suite 2298
2298 W. Airport Blvd.	1,750 SF	NNN	\$2,675 per month	End-cap suite with private offices, breakroom and restrooms



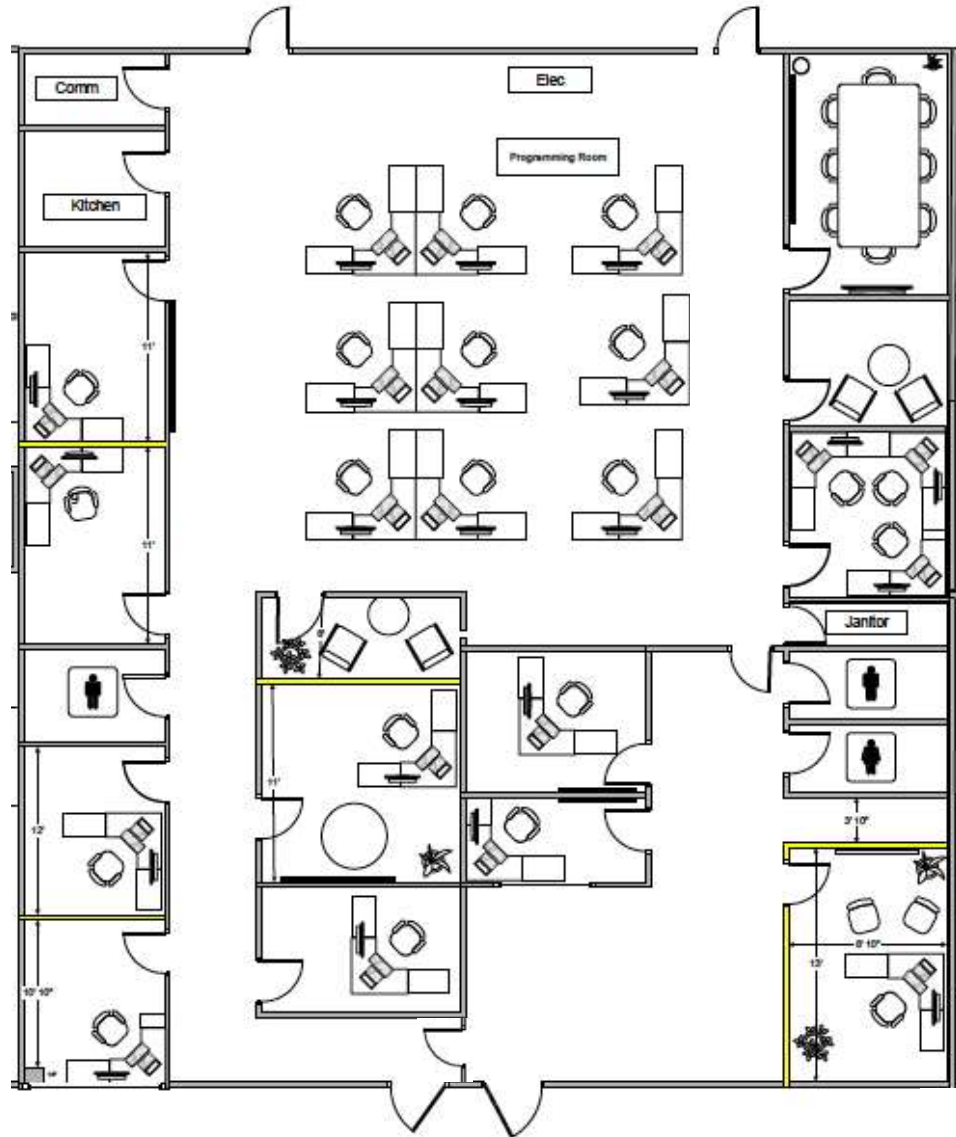
**CAPITAL**  
PLACEMENT PARTNERS  
Commercial Investment Property Advisors

11.03.2025

The information contained herein has been obtained from sources believed to be reliable; however, we make no representations or warranties, express or implied, as to its accuracy or completeness. All information should be independently verified prior to any purchase or lease. Unless otherwise stated, the property is offered as is, where is, with all faults.

6900 Tavistock Lakes Blvd.,  
Orlando, Florida 32824  
407 780 7123  
[www.cpprealty.com](http://www.cpprealty.com)

2292-2294 W. Airport Rd. - 3,500± SF



**3,500 SF**  
(Suite 2292-2294)

## Suite Highlights

- Large Training or Bullpen Area
- Right Entryway with Lobby/Reception Area
- Private Left Entryway for Employees
- 10-11 Private Offices



**CAPITAL**  
PLACEMENT PARTNERS  
Commercial Investment Property Advisors

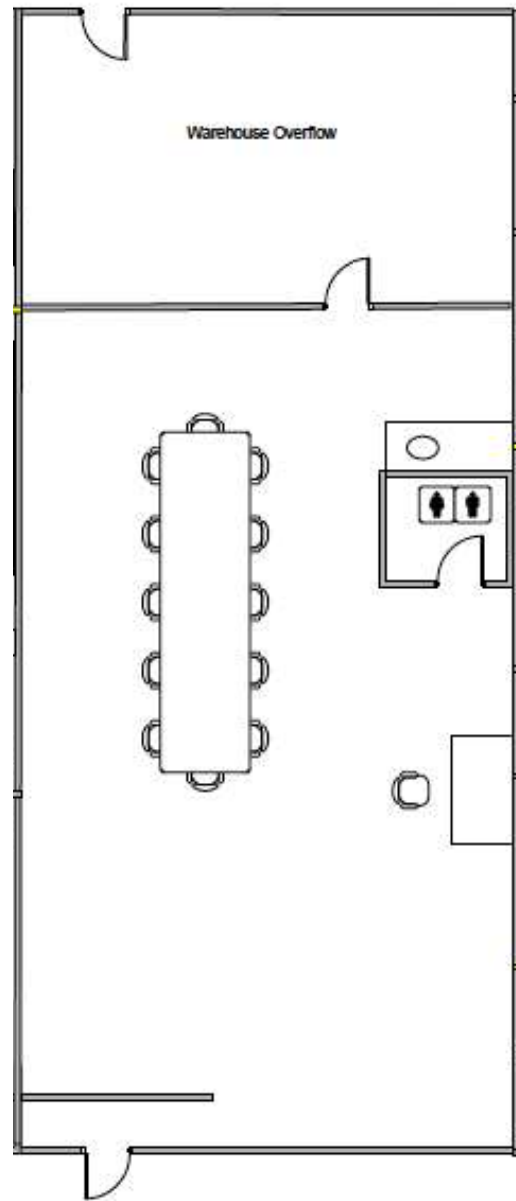
11.03.2025

The information contained herein has been obtained from sources believed to be reliable; however, we make no representations or warranties, express or implied, as to its accuracy or completeness. All information should be independently verified prior to any purchase or lease. Unless otherwise stated, the property is offered as is, where is, with all faults.

6900 Tavistock Lakes Blvd.,  
Orlando, Florida 32824  
407 780 7123  
[www.cpprealty.com](http://www.cpprealty.com)



2296 W. Airport Rd. - 1,750± SF



## Suite Highlights

- Large Training or Bullpen Area
- ±450 SF of Warehouse Space with Overhead Grade-Level Door
- Can Be Combined with Adjacent Suites (2298 or 2292-2294) for Expanded Training or Warehouse Capacity

**1,750 SF**  
(Suite 2296)



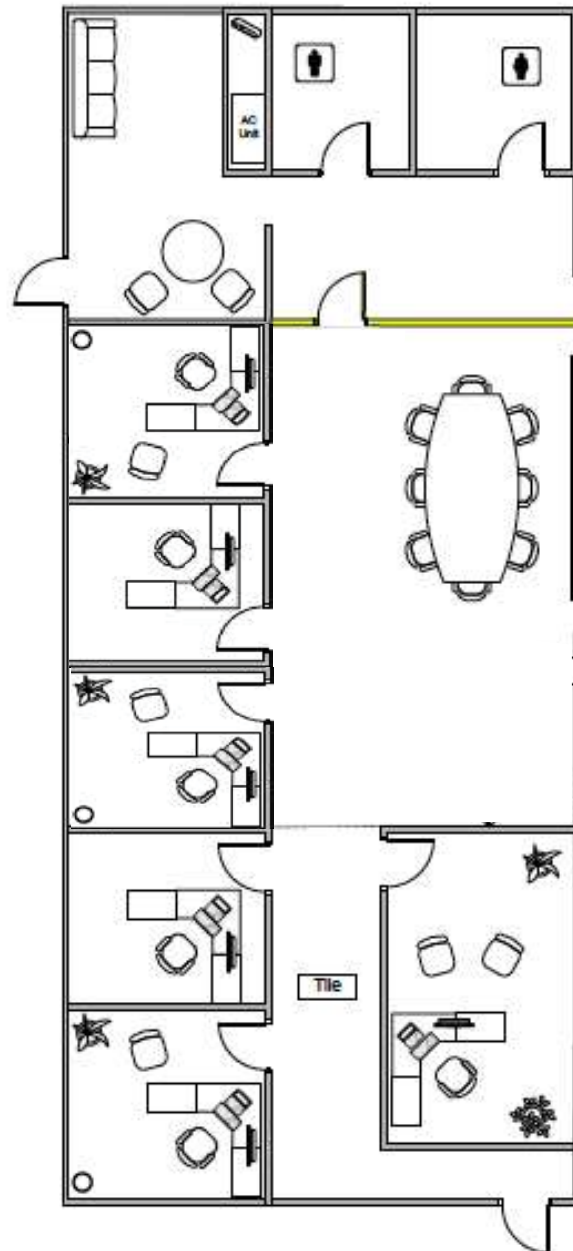
**CAPITAL**  
PLACEMENT PARTNERS  
Commercial Investment Property Advisors

11.03.2025

The information contained herein has been obtained from sources believed to be reliable; however, we make no representations or warranties, express or implied, as to its accuracy or completeness. All information should be independently verified prior to any purchase or lease. Unless otherwise stated, the property is offered as is, where is, with all faults.

6900 Tavistock Lakes Blvd.,  
Orlando, Florida 32824  
407 780 7123  
[www.cpprealty.com](http://www.cpprealty.com)

2298 W. Airport Rd. - 1,750± SF



## Suite Highlights

- Six (6) Private Offices
- Private westside entryway, endcap location
- Kitchen Area with Breakroom Area
- Private Men's and Women's Restrooms

**1,750 SF**  
(Suite 2298)



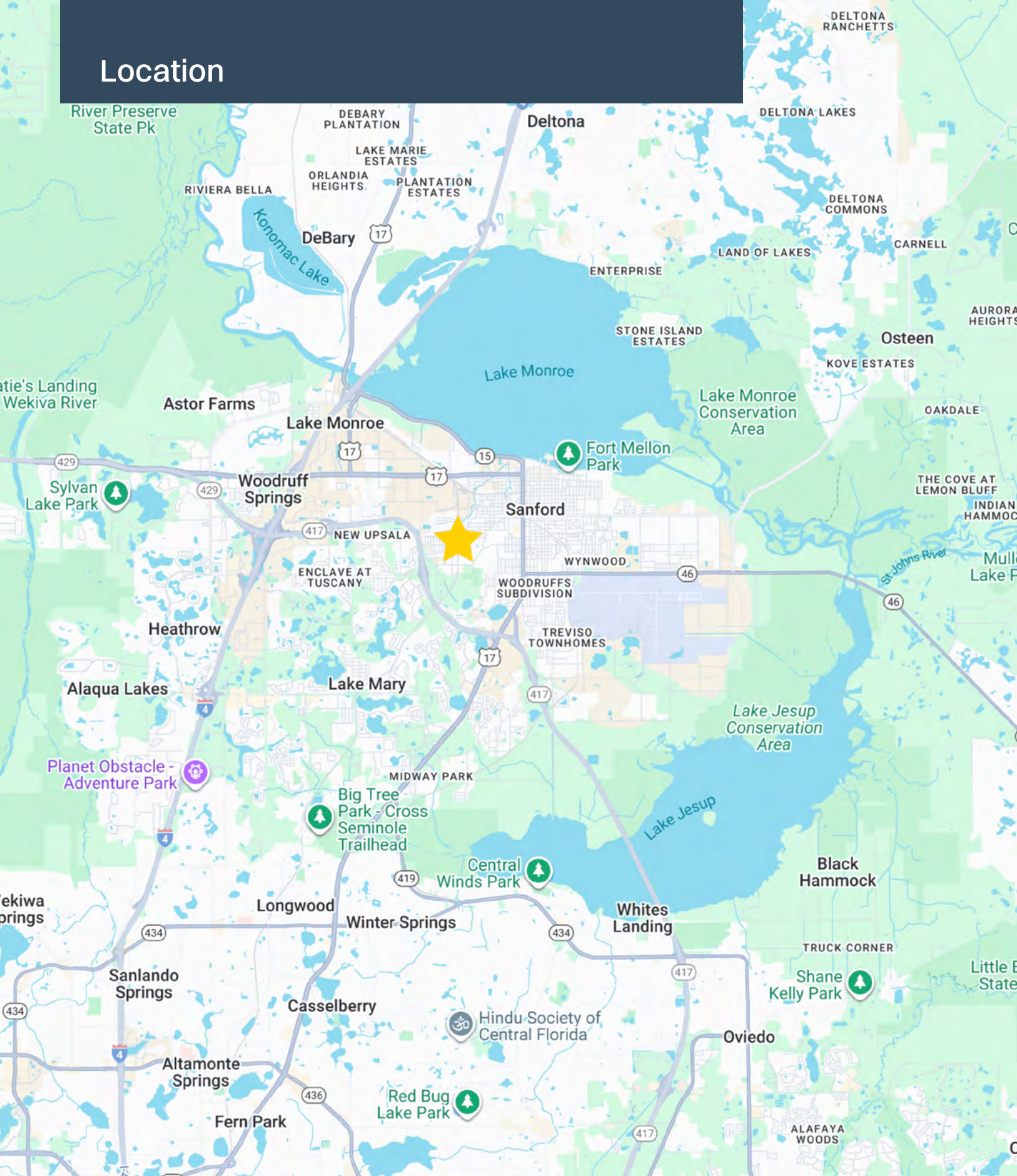
**CAPITAL**  
PLACEMENT PARTNERS  
Commercial Investment Property Advisors

11.03.2025

The information contained herein has been obtained from sources believed to be reliable; however, we make no representations or warranties, express or implied, as to its accuracy or completeness. All information should be independently verified prior to any purchase or lease. Unless otherwise stated, the property is offered as is, where is, with all faults.

6900 Tavistock Lakes Blvd.,  
Orlando, Florida 32824  
407 780 7123  
[www.cpprealty.com](http://www.cpprealty.com)

# Location



**CAPITAL**  
PLACEMENT PARTNERS  
Commercial Investment Property Advisors

11.03.2025

The information contained herein has been obtained from sources believed to be reliable; however, we make no representations or warranties, express or implied, as to its accuracy or completeness. All information should be independently verified prior to any purchase or lease. Unless otherwise stated, the property is offered as is, where is, with all faults.

6900 Tavistock Lakes Blvd.,  
Orlando, Florida 32824  
407 780 7123  
[www.cpprealty.com](http://www.cpprealty.com)