

PRICE

\$16 PSF (modified gross)

SIZE

1,994 Square Feet

ZONING

TC-2, Town Center
Commercial



ABOUT THE PROPERTY

Great location for office/medical/professional space with exposure to Main Street in Dublin, PA.

1,994 SF available at Federal Court Professional Center, in the heart of Dublin Borough with 17,000 VPD directly in front of the property. Ample parking and the space can be retrofitted to suit tenant's needs!

Highlights include....

- **Prime Location:** Main Street Dublin, PA.
- **Zoning:** TC-2, Town Center Commercial
- **Nearby Amenities:** Neshaminy Creek Brewing, Wawa, Weis, and three major commercial / residential development under way - Dublin, PA is growing dramatically!

PRESENTED BY

James R. Wrigley
215-519-2290 (m) | 215-855-5100 (o)
jimw@kpgcm.com

Keith T. Metzger
267-218-4819 (m) | 215-855-5100 ext 118 (o)
keithm@kpgcm.com

OFFICE SPACE FOR LEASE

174 North Main Street, Dublin, PA 18917



PRESENTED BY

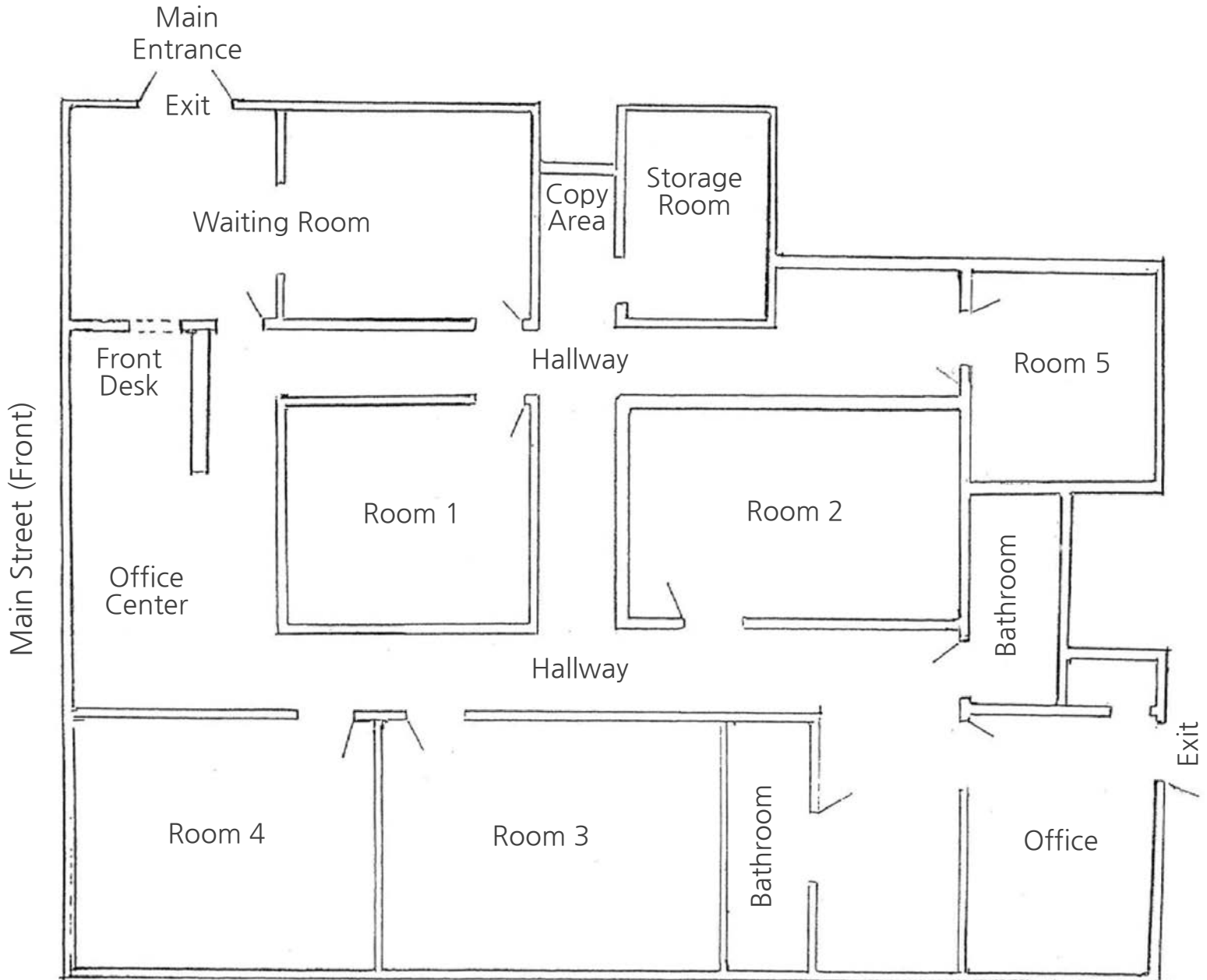
James R. Wrigley
215-519-2290 (m)
215-855-5100 (o)
jimw@kpgcm.com

Keith T. Metzger
267-218-4819 (m)
215-855-5100 ext 118 (o)
keithm@kpgcm.com



OFFICE SPACE FOR LEASE

174 North Main Street, Dublin, PA 18917



Space can be modified to open walls and adjust layout.

PRESENTED BY

James R. Wrigley
215-519-2290 (m)
215-855-5100 (o)
jimw@kpgcm.com

Keith T. Metzger
267-218-4819 (m)
215-855-5100 ext 118 (o)
keithm@kpgcm.com

