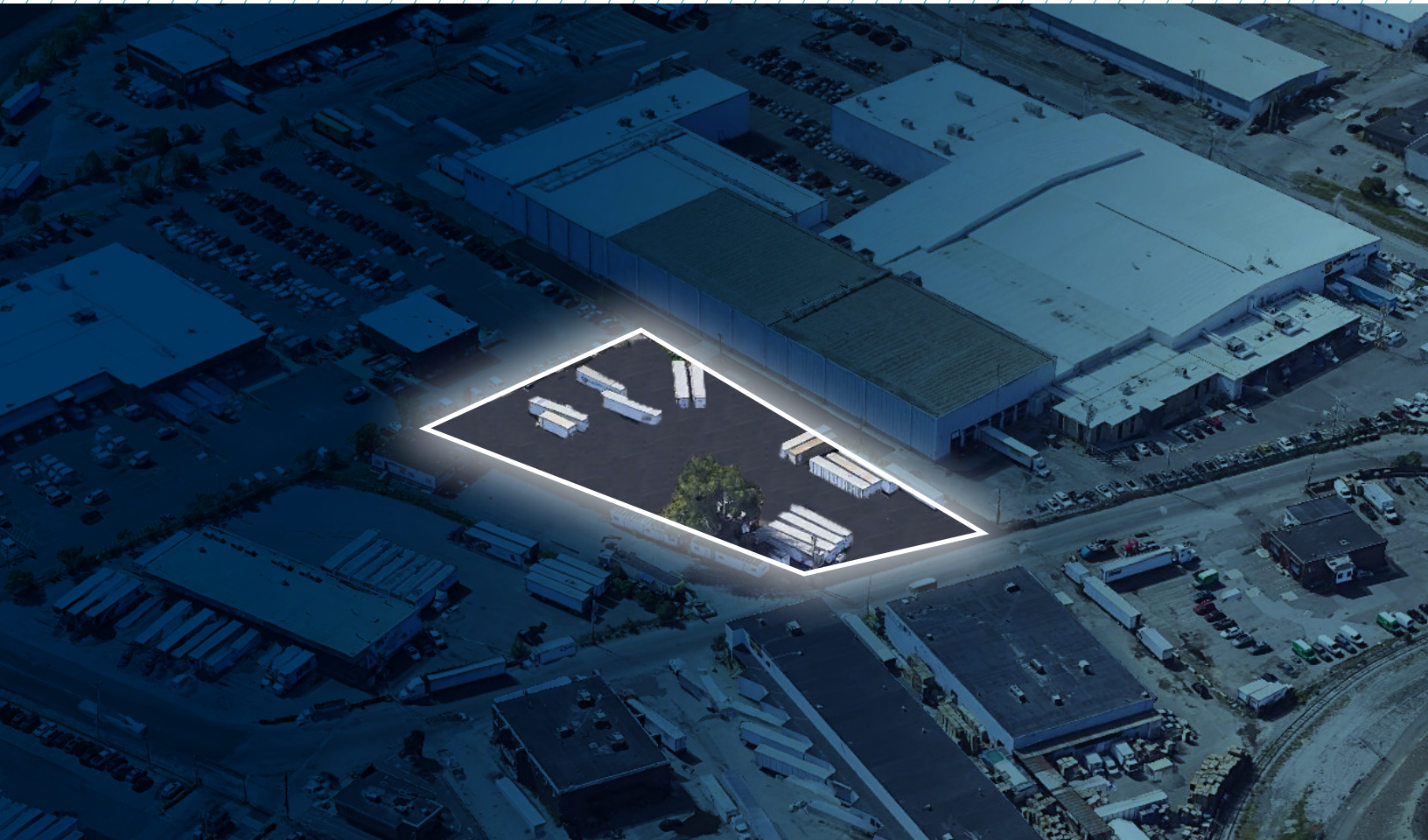


THE YARDS AT

217 BEACHAM STREET

CHELSEA, MA



FOR LEASE

1.43 Acres | 62,290 SF

**LAST MILE URBAN INDUSTRIAL TRAILER DROP &
AUTO PARKING SPACE AVAILABLE**

The Davis Companies

 **CUSHMAN &
WAKEFIELD**

PROPERTY HIGHLIGHTS

217 Beacham Street is 1.43 acre parcel strategically located directly on Beacham Street, the primary wholesale produce supply cluster in Greater Boston, and benefits from convenient access to the Tobin Bridge (US Route 1), I-93 North/South, and Logan International Airport. The immediate area is in the midst of a significant transformation following the successful opening of the \$2.2B+ Encore Boston Harbor Casino and multiple in-process redevelopment projects in the immediate area are only expected to further improve the desirability of this last-mile urban industrial area.

The Davis Companies Founded in 1976, The Davis Companies has over a 40-year history of successfully investing, managing and developing real estate for its own account and on behalf of investors. The Davis Companies has earned a reputation for integrity, creativity and excellence, making it one of the premier real estate investment, development and management firms in the northeast U.S.

PROPERTY SPECS:

Total Acreage	1.43 Acres (62,290 SF)
Zoning:	Industrial ("I") Si
Site Condition	Fully paved & fenced with lighting
Auto Parking Stalls:	129

DRIVE TIMES:

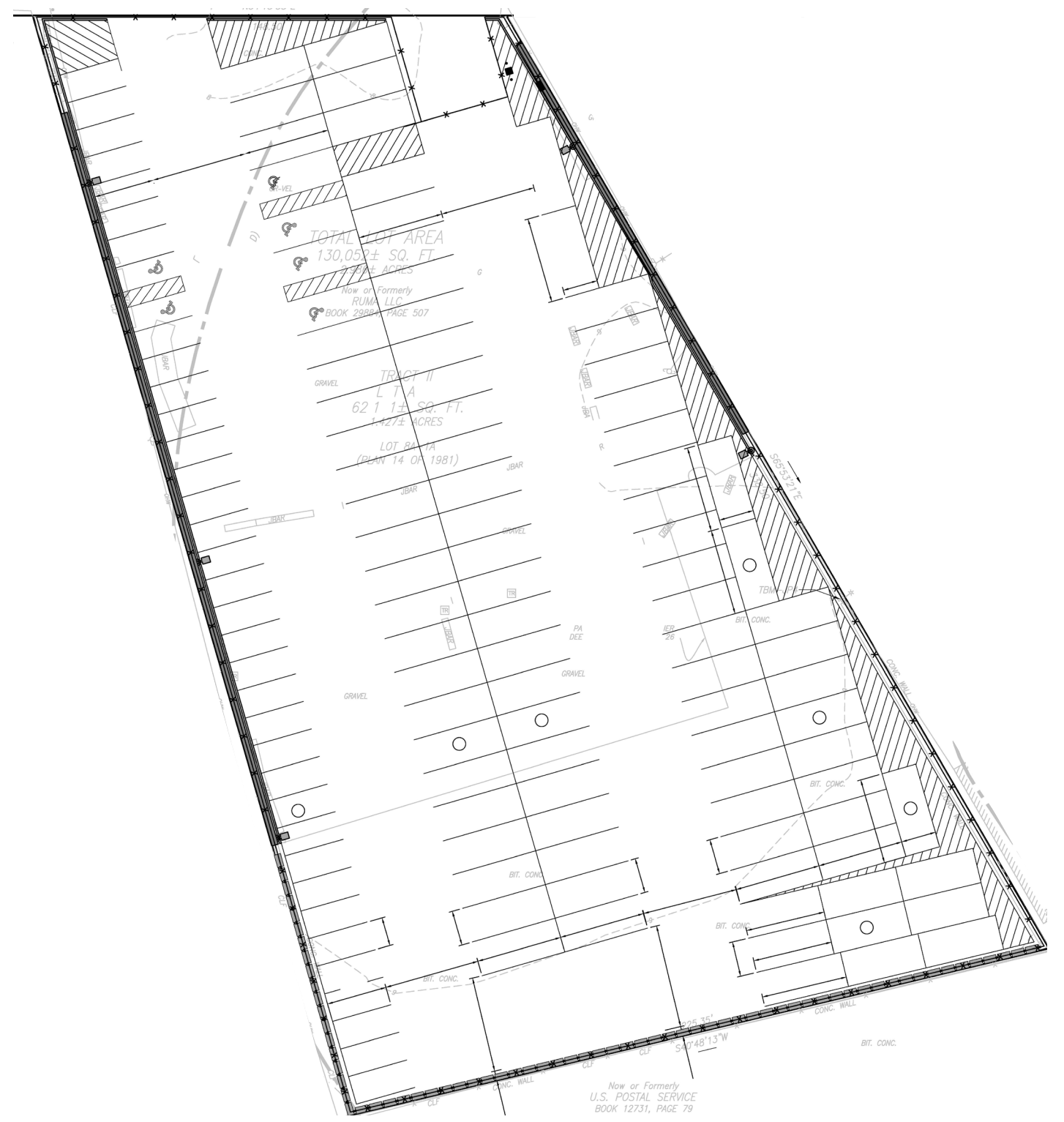
 **93** 6 Miles

 **90** 4 Miles

 **Logan International Airport**
3 Miles

 **CBD Boston**
2 Miles

PARKING SITE PLAN



LOGAN AIRPORT



SEAPORT

DOWNTOWN BOSTON

EAST BOSTON

Zakim Bridge

CHARLESTOWN NAVY YARD

Tobin Bridge

Chelsea River

Mystic River

CHELSEA



Williams Street

THE YARDS

Beacham Street

CONTACT INFORMATION

PHILIP VERRE

philip.verre@cushwake.com
+1 617 204 4124

SCOTT GREDLER

scott.gredler@cushwake.com
+1 617 204 5975

ROB BYRNE

rob.byrne@cushwake.com
+1 617 204 4113

JIM MURPHY

jim.r.murphy@cushwake.com
+1 617 204 4168