

JACKSON SQUARE GEM

847 SANSOME STREET

FULL FLOOR OPPORTUNITIES

RATES FROM \$24 IG

\$4.00 PSF COMMISSION PER YEAR

FOR THE FIRST TWO YEARS

Call for Details

FOR LEASE

BUILDING HIGHLIGHTS:

- Efficient Full Floors
 - Brick & Timber
 - Creative Spaces
 - High-end Finishes
 - HVAC
- High Touch Local Ownership
 - Steps to North Beach, Embarcadero & Restaurants
 - Downtown Skyline
 - Plentiful Street Parking
- Short Commute from Marin County

JAY SHAFFER

415-407-3997

jshaffer@coltoncommercialsf.com

License #: 01444640

BRADLEY L. COLTON

415-834-1600

bcolton@coltoncommercialsf.com

License #: 00805116

BRYAN B. COLTON

415-595-6959

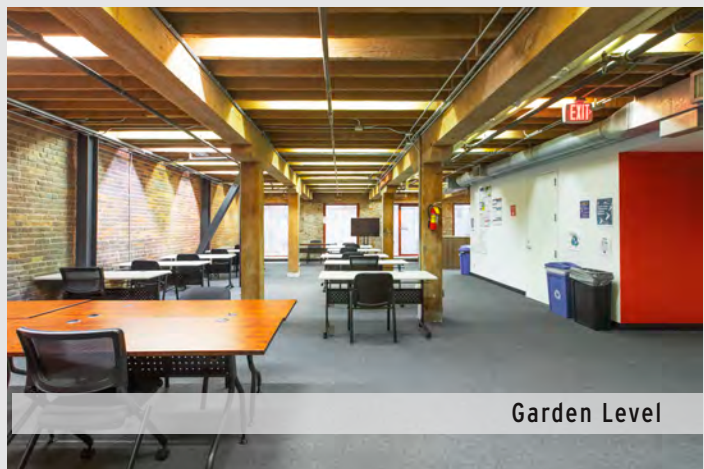
bryancolton@coltoncommercialsf.com

License #: 02111407





3rd Floor View



Garden Level



4th Floor Reception

AVAILABLE SPACES

SUITE	SIZE	RATE*	AVAILABLE
Full 3rd Floor:	4,589 RSF +/-	\$29 IG	NOW
Suite 200:	1,872 RSF +/-		LEASED
Suite 201:	2,640 RSF +/-		LEASED
First Floor:	3,650 RSF +/-		LEASED
Garden level:	3,862 RSF +/-	\$24 IG	NOW

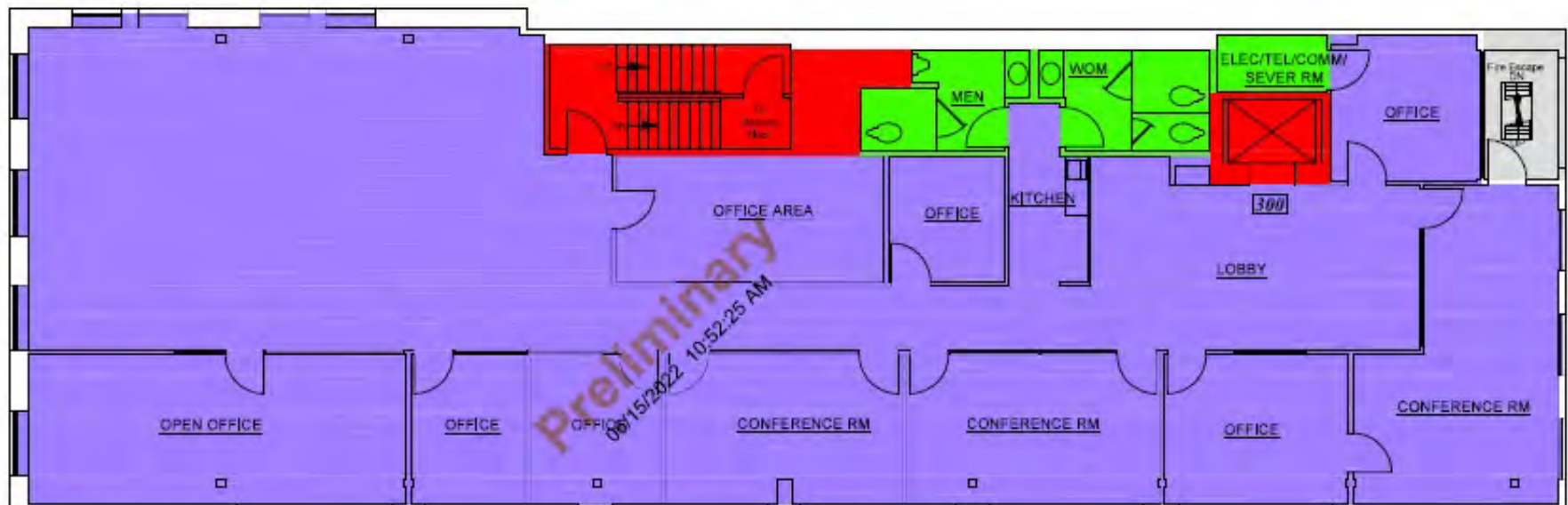
Total Available: 8,451 RSF +/-

*Rates are based on an "As-Is" basis. Improvements amortized over lease term.

FLOOR PLAN - THIRD FLOOR

4,589 RSF +/-

Full Floor brick & timber space. Mix of private offices, conference rooms, kitchen & open space.

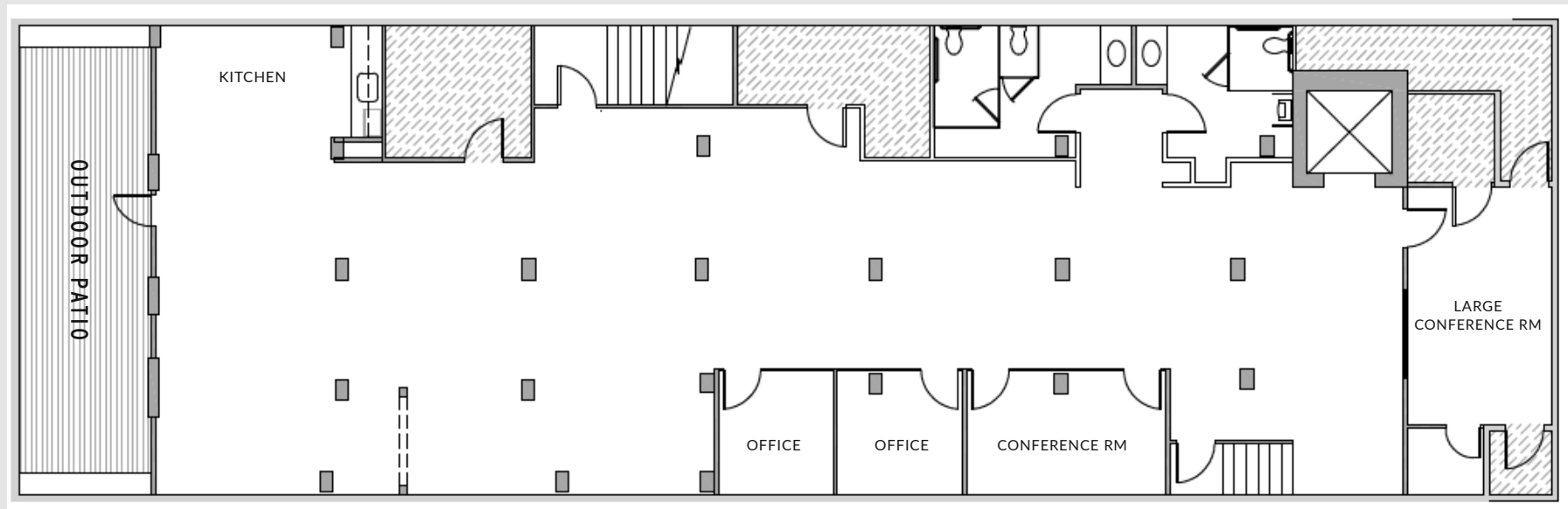
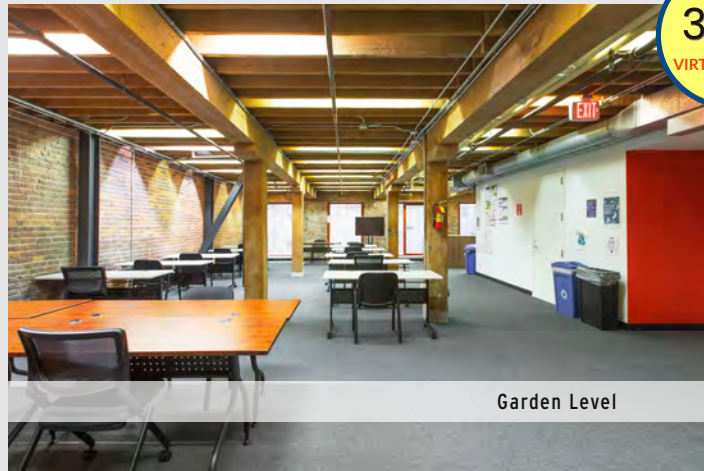


847 SANSOME

FLOOR PLAN - GARDEN LEVEL

3,862 RSF +/-

Full floor creative space with a Private outdoor patio. High exposed ceilings. Mostly open space, private offices, multiple conference rooms & kitchen.



847 SANSOME

Property Location



847 Sansome St



Sydney G. Walton Square



Safeway

Restaurants

- 1 Quince
- 2 Cotogna
- 3 Blue Bottle Coffee
- 4 Bix
- 5 Roka Akor - San Francisco
- 6 The Battery
- 7 Gambino's New York Subs
- 8 Tommaso's Ristorante Italiano
- 9 Réveille Coffee Co.
- 10 Cafe Zoetrope
- 11 Tosca Cafe
- 12 Yo Yo's

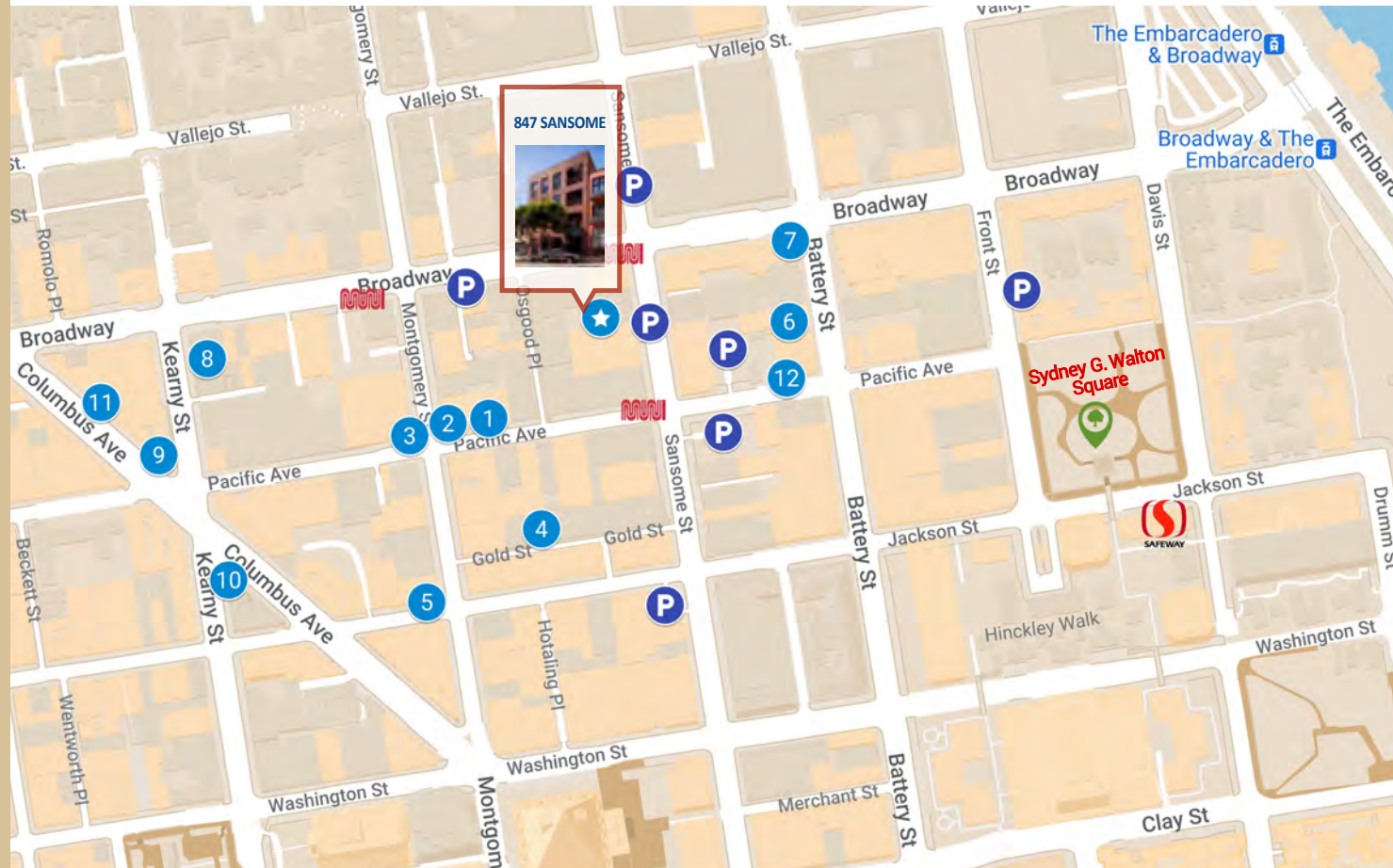
Parking

- 373 Broadway Parking
- 768 Sansome St.
- Public Parking
- SF City Parking
- Parking lot
- Liberty Park Management, Inc.
- Embarcadero Square Garage

Public Transportation

- Broadway & Sansome St
- Broadway & Montgomery St
- Pacific Ave & Sansome St

NEIGHBORHOOD MAP



847 SANSOME





**RATES FROM \$24 IG
\$4.00 PSF COMMISSION PER YEAR
FOR THE FIRST TWO YEARS**

Call for Details

847 SANSOME

PLEASE CONTACT FOR MORE INFORMATION:

JAY SHAFFER

415-407-3997

jshaffer@coltoncommercialsf.com

License #: 01444640

BRADLEY L. COLTON

415-834-1600

bcolton@coltoncommercialsf.com

License #: 00805116

BRYAN B. COLTON

415-595-6959

bryancolton@coltoncommercialsf.com

License #: 02111407



DISCLOSURE: The foregoing is based upon information provided by others which we believe is accurate, however, no guarantee, warranty or representation is made. Colton Commercial & Partners, Inc. recommends that all interested parties independently verify its accuracy and completeness.