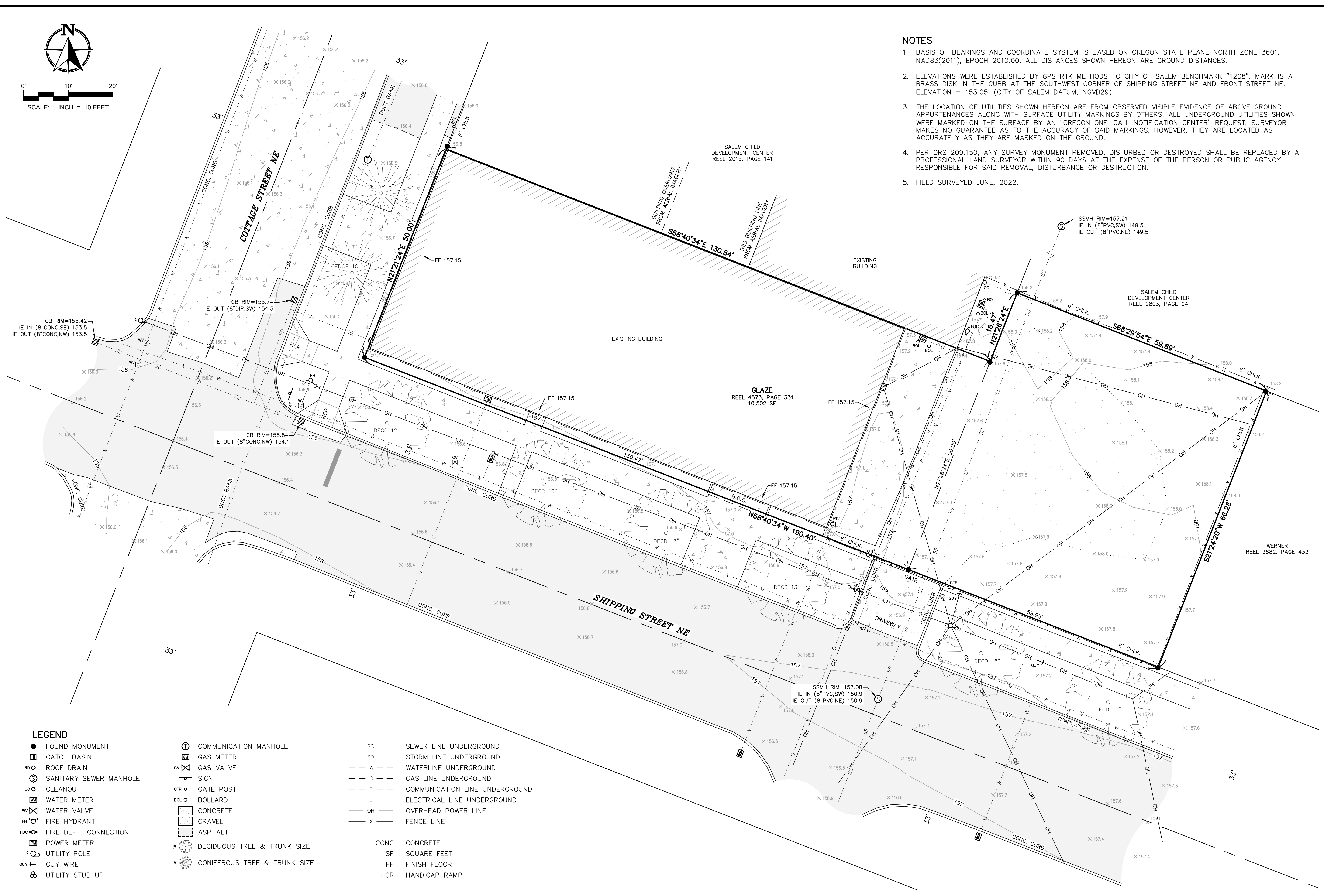




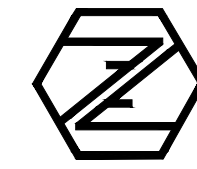
0' 10' 20'  
SCALE: 1 INCH = 10 FEET



**NOTES**

1. BASIS OF BEARINGS AND COORDINATE SYSTEM IS BASED ON OREGON STATE PLANE NORTH ZONE 3601, NAD83(2011), EPOCH 2010.00. ALL DISTANCES SHOWN HEREON ARE GROUND DISTANCES.
2. ELEVATIONS WERE ESTABLISHED BY GPS RTK METHODS TO CITY OF SALEM BENCHMARK "1208". MARK IS A BRASS DISK IN THE CURB AT THE SOUTHWEST CORNER OF SHIPPING STREET NE AND FRONT STREET NE. ELEVATION = 153.05' (CITY OF SALEM DATUM, NVD29)
3. THE LOCATION OF UTILITIES SHOWN HEREON ARE FROM OBSERVED VISIBLE EVIDENCE OF ABOVE GROUND APPURTENANCES ALONG WITH SURFACE UTILITY MARKINGS BY OTHERS. ALL UNDERGROUND UTILITIES SHOWN WERE MARKED ON THE SURFACE BY AN "OREGON ONE-CALL NOTIFICATION CENTER" REQUEST. SURVEYOR MAKES NO GUARANTEE AS TO THE ACCURACY OF SAID MARKINGS, HOWEVER, THEY ARE LOCATED AS ACCURATELY AS THEY ARE MARKED ON THE GROUND.
4. PER ORS 209.150, ANY SURVEY MONUMENT REMOVED, DISTURBED OR DESTROYED SHALL BE REPLACED BY A PROFESSIONAL LAND SURVEYOR WITHIN 90 DAYS AT THE EXPENSE OF THE PERSON OR PUBLIC AGENCY RESPONSIBLE FOR SAID REMOVAL, DISTURBANCE OR DESTRUCTION.
5. FIELD SURVEYED JUNE, 2022.

**FORTY FIVE NORTH SURVEYING, LLC**



7230 3rd Street SE #145, Turner, OR 97392  
P: (503) 558-3330 E: info@fifmsurveying.com

**TOPOGRAPHIC SURVEY**  
**FOR: 725 SHIPPING STREET NE**  
IN THE NW 1/4 OF SECTION 23, T.7S., R.3W., W.M.  
CITY OF SALEM, MARION COUNTY, OREGON

- LEGEND**
- FOUND MONUMENT
  - ▣ CATCH BASIN
  - RD ○ ROOF DRAIN
  - ⊙ SANITARY SEWER MANHOLE
  - CLEANOUT
  - WM ○ WATER METER
  - WV ○ WATER VALVE
  - FH ○ FIRE HYDRANT
  - FDC ○ FIRE DEPT. CONNECTION
  - PM ○ POWER METER
  - UTILITY POLE
  - GUY ○ GUY WIRE
  - ⊗ UTILITY STUB UP

- ⊕ COMMUNICATION MANHOLE
- ⊕ GAS METER
- ⊕ GAS VALVE
- ⊕ SIGN
- GTP ○ GATE POST
- BOL ○ BOLLARD
- CONC CONCRETE
- GRAV GRAVEL
- ASPH ASPHALT
- # DECIDUOUS TREE & TRUNK SIZE
- # CONIFEROUS TREE & TRUNK SIZE

- SS SEWER LINE UNDERGROUND
- SD STORM LINE UNDERGROUND
- W WATERLINE UNDERGROUND
- G GAS LINE UNDERGROUND
- T COMMUNICATION LINE UNDERGROUND
- E ELECTRICAL LINE UNDERGROUND
- OH OVERHEAD POWER LINE
- X FENCE LINE
- CONC CONCRETE
- SF SQUARE FEET
- FF FINISH FLOOR
- HCR HANDICAP RAMP

REGISTERED PROFESSIONAL LAND SURVEYOR

OREGON  
SEPTEMBER 12, 2017  
STEVEN J. HOWELL  
91569

RENEWS: 6-30-2023

NO.	DATE	DESCRIPTION
1	20JUL22	ADD PRIVATE LOCATES
0	09JUL22	INITIAL RELEASE

JOB NO. 22-368

SHEET 1/1