

SOUTHPOINT OFFICE CENTER SUITE 1604
6817 SOUTHPOINT PRKY, JACKSONVILLE, FL 32216

**OFFICE CONDO
FOR LEASE**



Suite 1604 1,180 Square Feet Lease rate: \$ 23/sf/yr + \$7.15sf/yr NNN (\$2,964.75/mo),

Southpoint Office Center is centrally located with close proximity to St. Johns Town Center, St. Vincent's Hospital, I-95, I-295, US-1, and Jay Turner Butler Blvd. Suite 1604 features in a reception area, 1 private office, break room, ADA compliant bathroom, and 1 large open space that could easily be converted into private offices or work spaces.

- **Excellent location offering easy access to I-295, I-95, and Jay Turner Butler Blvd.**
- **Restaurants and shopping nearby**
- **Close proximity to St. Vincent's Hospital**
- **Open Floor Plan**

Eric Akers, Broker

Phone: (904)535-8465

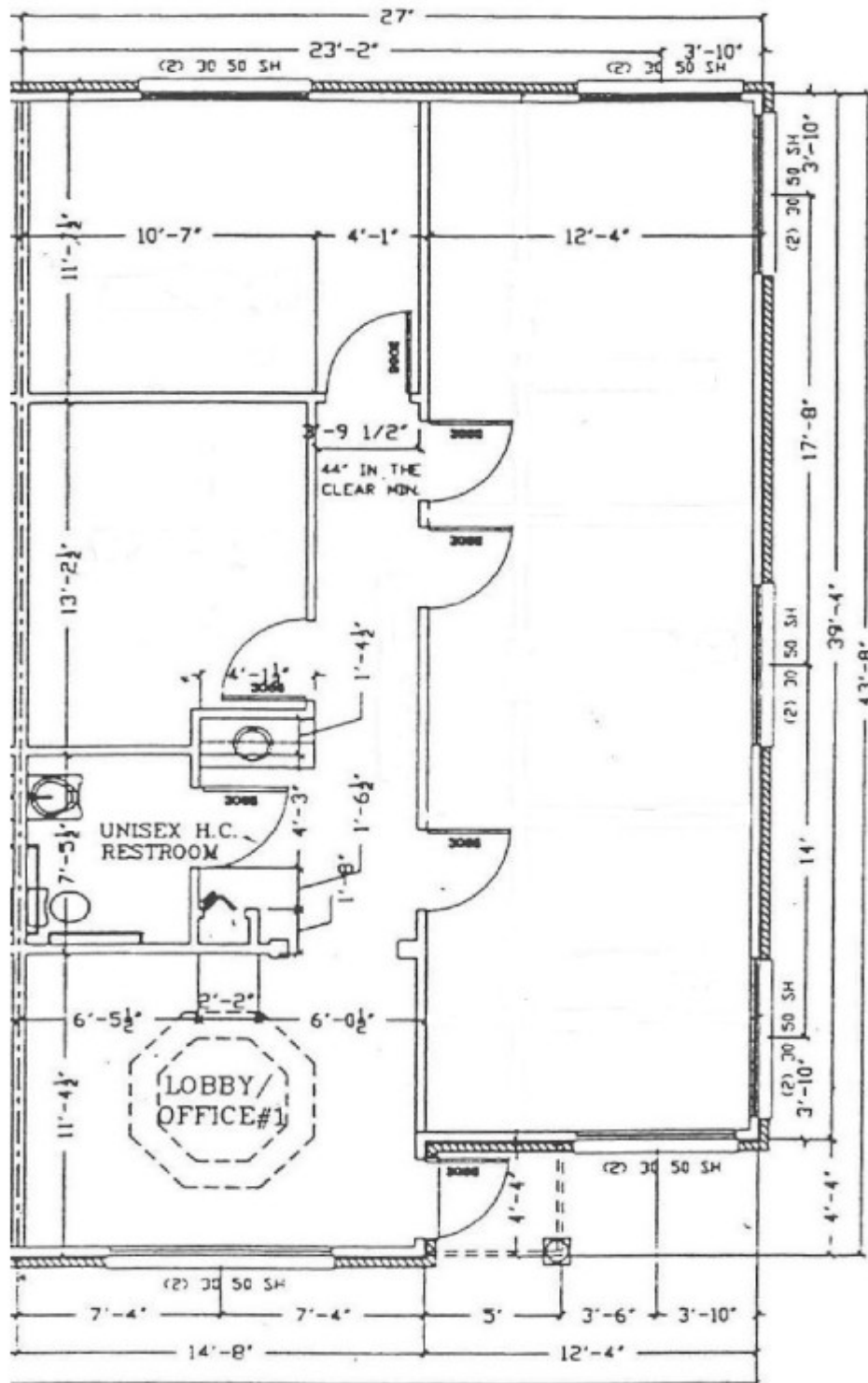
william.e.akers@gmail.com



The information contained herein was obtained from reliable sources and is believed to be accurate. All information presented should be verified. All or part of the property may be withdrawn from the market at any time without notice.

SOUTHPOINT OFFICE CENTER SUITE 1604
6817 SOUTHPOINT PRKY, JACKSONVILLE, FL 32216

FLOOR PLAN



Eric Akers, Broker

Phone: (904)535-8465

william.e.akers@gmail.com

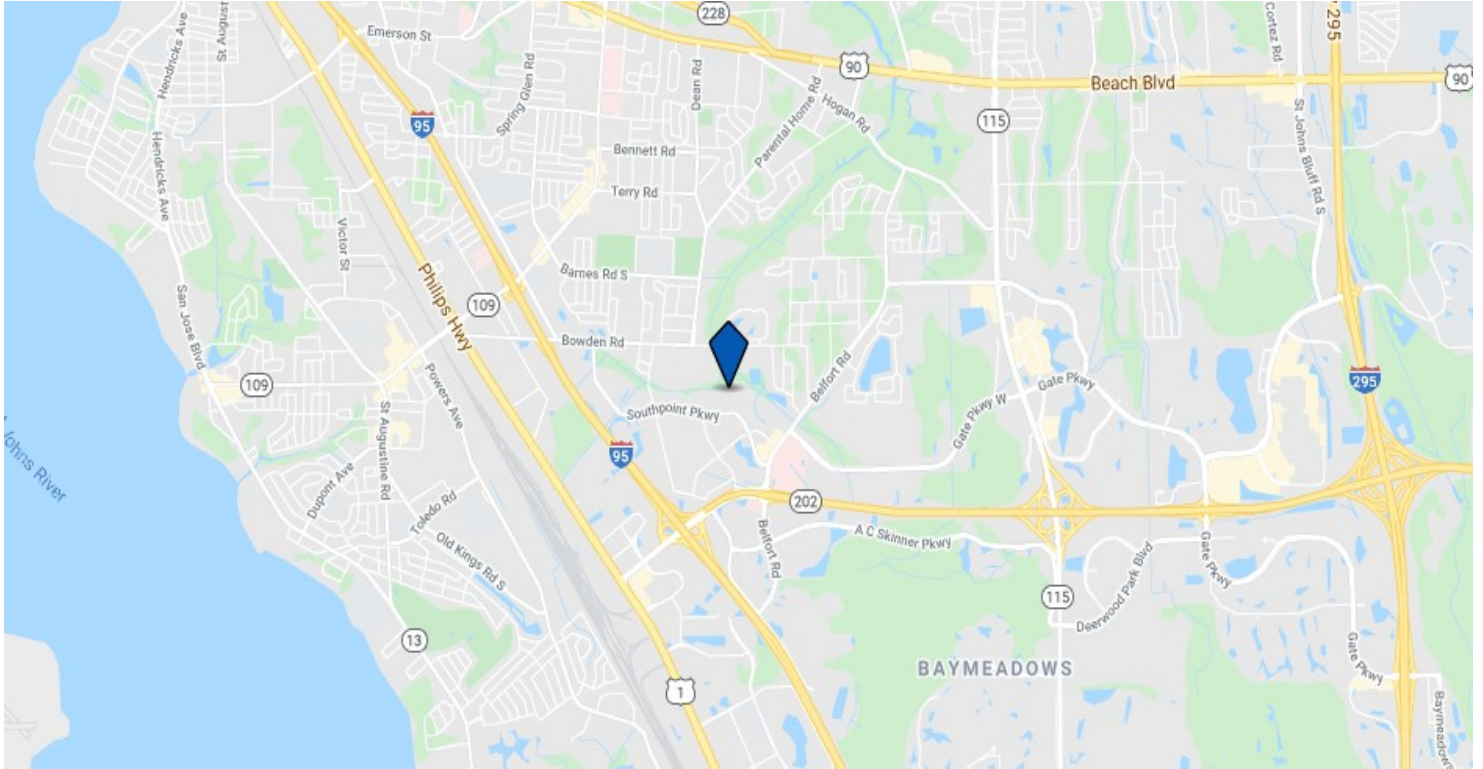


The information contained herein was obtained from reliable sources and is believed to be accurate. All information presented should be verified. All or part of the property may be withdrawn from the market at any time without notice.

SOUTHPOINT OFFICE CENTER SUITE 1604

6817 SOUTHPOINT PRKY, JACKSONVILLE, FL 32216

PHOTOS & LOCATION MAP



Eric Akers, Broker

Phone: (904)535-8465

william.e.akers@gmail.com



The information contained herein was obtained from reliable sources and is believed to be accurate. All information presented should be verified. All or part of the property may be withdrawn from the market at any time without notice.