

# FOR LEASE

5101 SE 29<sup>th</sup> St, Suite 102  
Del City, OK 73115



JohnsonCommercialGroup.com



## Offering Summary

**Lease Price: \$17.00 SF**

**Lease Type: NNN**

**NNN Rate: \$3.80 SF**

**Available SF 1,200 SF +/-**

**Year: 2017**

**Zoning: PUD**

## Property Overview

For Lease – 5101 SE 29th Street, Suite 102 | Del City, OK 73115

Suite 102 offers 1,200 SF of versatile commercial space in a well-established neighborhood center along SE 29th Street. The suite will be delivered as a white box, complete with one restroom, providing a flexible foundation for a wide range of retail or service-based users. Current neighboring tenants include a nail salon, barber shop, hair salon, CBD shop, and Domino's Pizza—creating strong daily traffic and complementary customer draw. This is an excellent opportunity to position your business in a busy, convenient Del City location.

**Chris Johnson**  
chris@jcgok.com  
405.435.3572



**BRICK & BEAM**  
REALTY

**Sally Allen**  
sally@jcgok.com  
405.623.7920

# FOR LEASE

5101 SE 29<sup>th</sup> St, Suite 102  
Del City, OK 73115



JohnsonCommercialGroup.com



## Offering Summary

**Lease Price: \$17.00 SF**

**Lease Type: NNN**

**NNN Rate: \$3.80 SF**

**Available SF 1,200 SF +/-**

**Year: 2017**

**Zoning: PUD**

## Property Overview

For Lease – 5101 SE 29th Street, Suite 102 | Del City, OK 73115

Suite 102 offers 1,200 SF of versatile commercial space in a well-established neighborhood center along SE 29th Street. The suite will be delivered as a white box, complete with one restroom, providing a flexible foundation for a wide range of retail or service-based users. Current neighboring tenants include a nail salon, barber shop, hair salon, CBD shop, and Domino's Pizza, creating strong daily traffic and complementary customer draw. This is an excellent opportunity to position your business in a busy, convenient Del City location.

**Chris Johnson**  
chris@jcgok.com  
405.435.3572



**BRICK & BEAM**  
REALTY

**Sally Allen**  
sally@jcgok.com  
405.623.7920

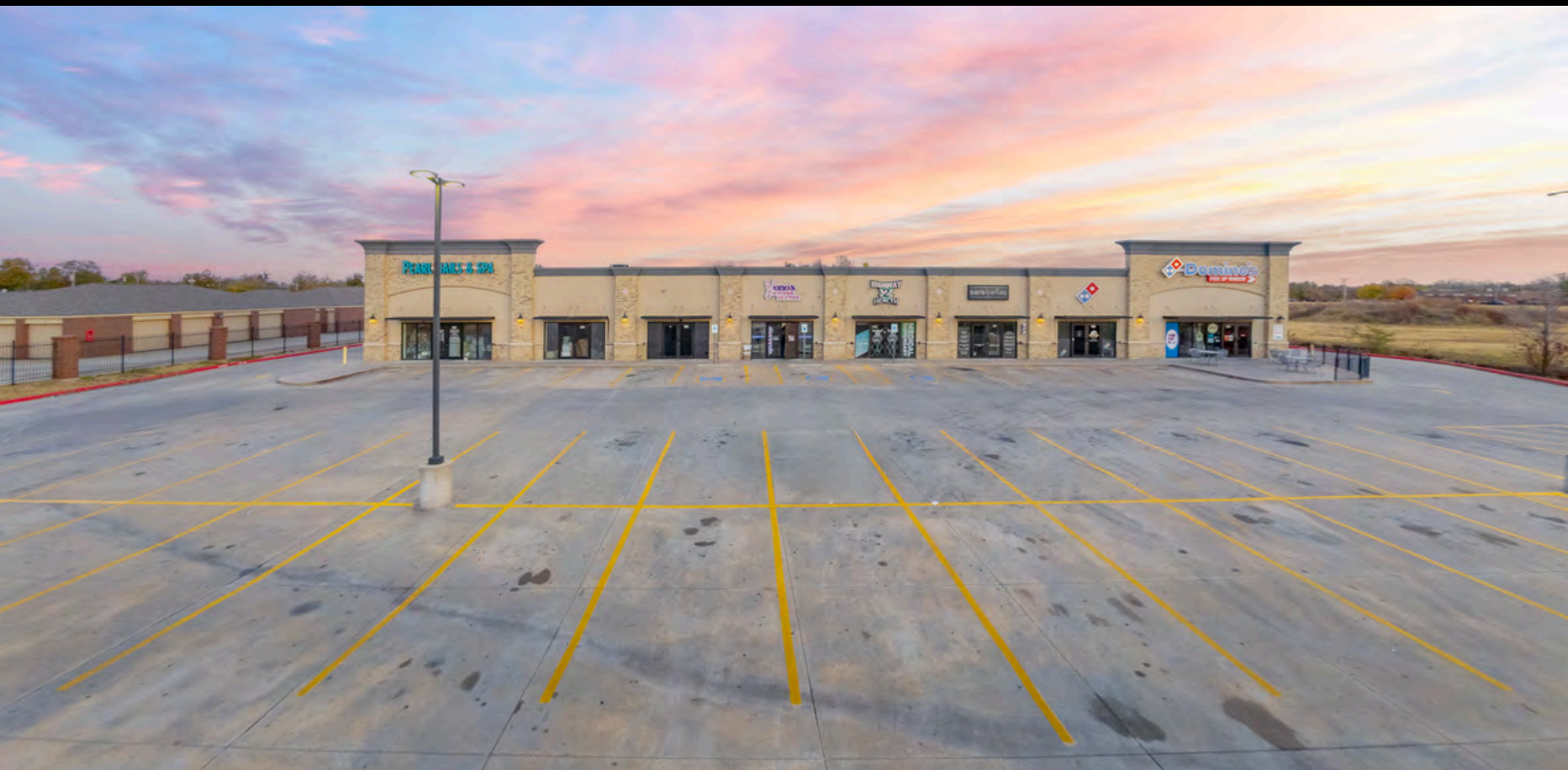


# FOR LEASE

5101 SE 29<sup>th</sup> St, Suite 102  
Del City, OK 73115

 **Johnson**  
Commercial Group

JohnsonCommercialGroup.com



**Chris Johnson**  
chris@jcgok.com  
405.435.3572



**BRICK & BEAM**  
REALTY

**Sally Allen**  
sally@jcgok.com  
405.623.7920

# FOR LEASE

5101 SE 29<sup>th</sup> St, Suite 102  
Del City, OK 73115



**Johnson**  
Commercial Group

JohnsonCommercialGroup.com



**Chris Johnson**  
chris@jcgok.com  
405.435.3572



**BRICK & BEAM**  
REALTY

**Sally Allen**  
sally@jcgok.com  
405.623.7920

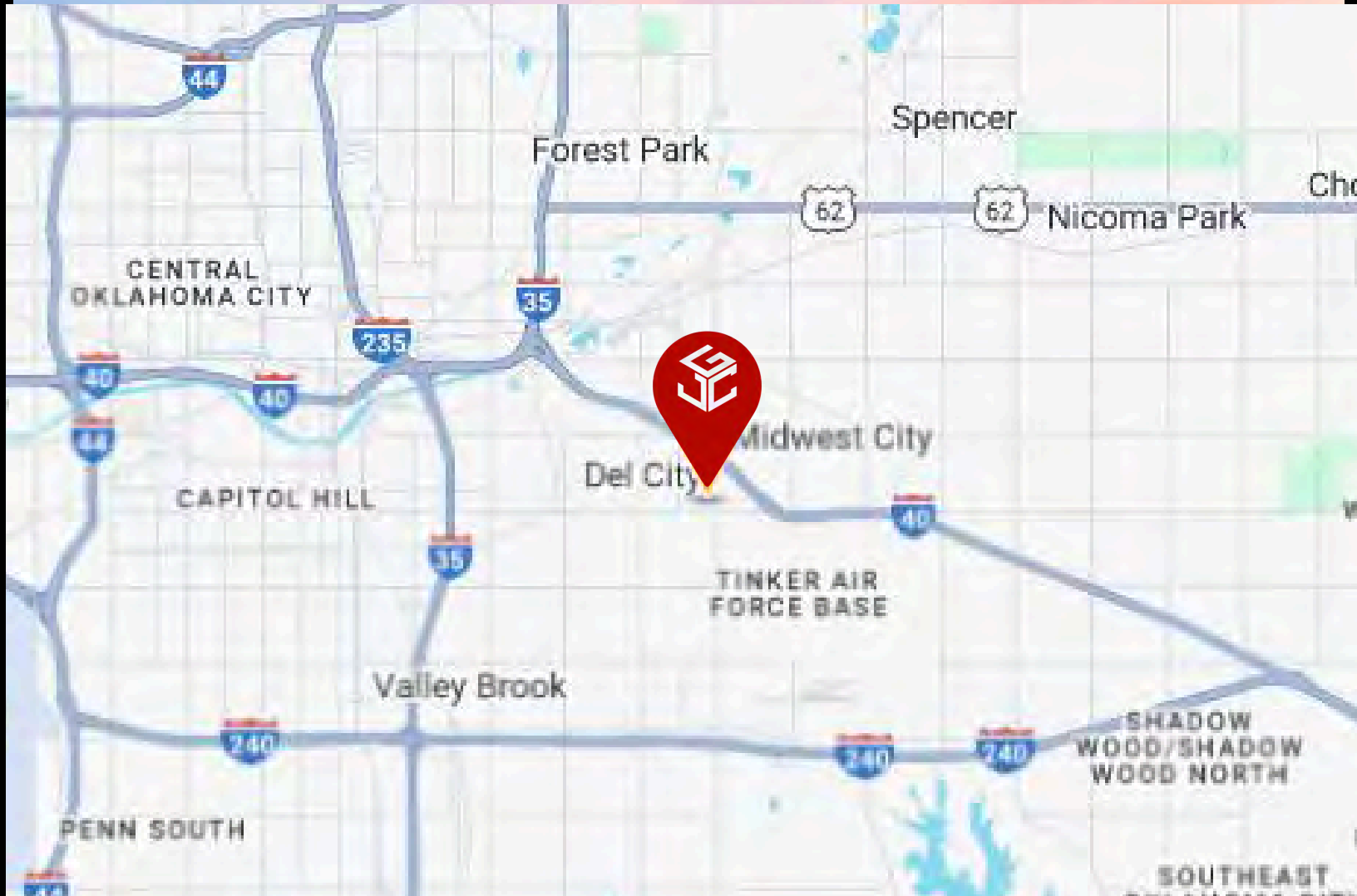


# FOR LEASE

5101 SE 29<sup>th</sup> St, Suite 102  
Del City, OK 73115



JohnsonCommercialGroup.com



**Chris Johnson**  
chris@jcgok.com  
405.435.3572



**BRICK & BEAM**  
REALTY

**Sally Allen**  
sally@jcgok.com  
405.623.7920

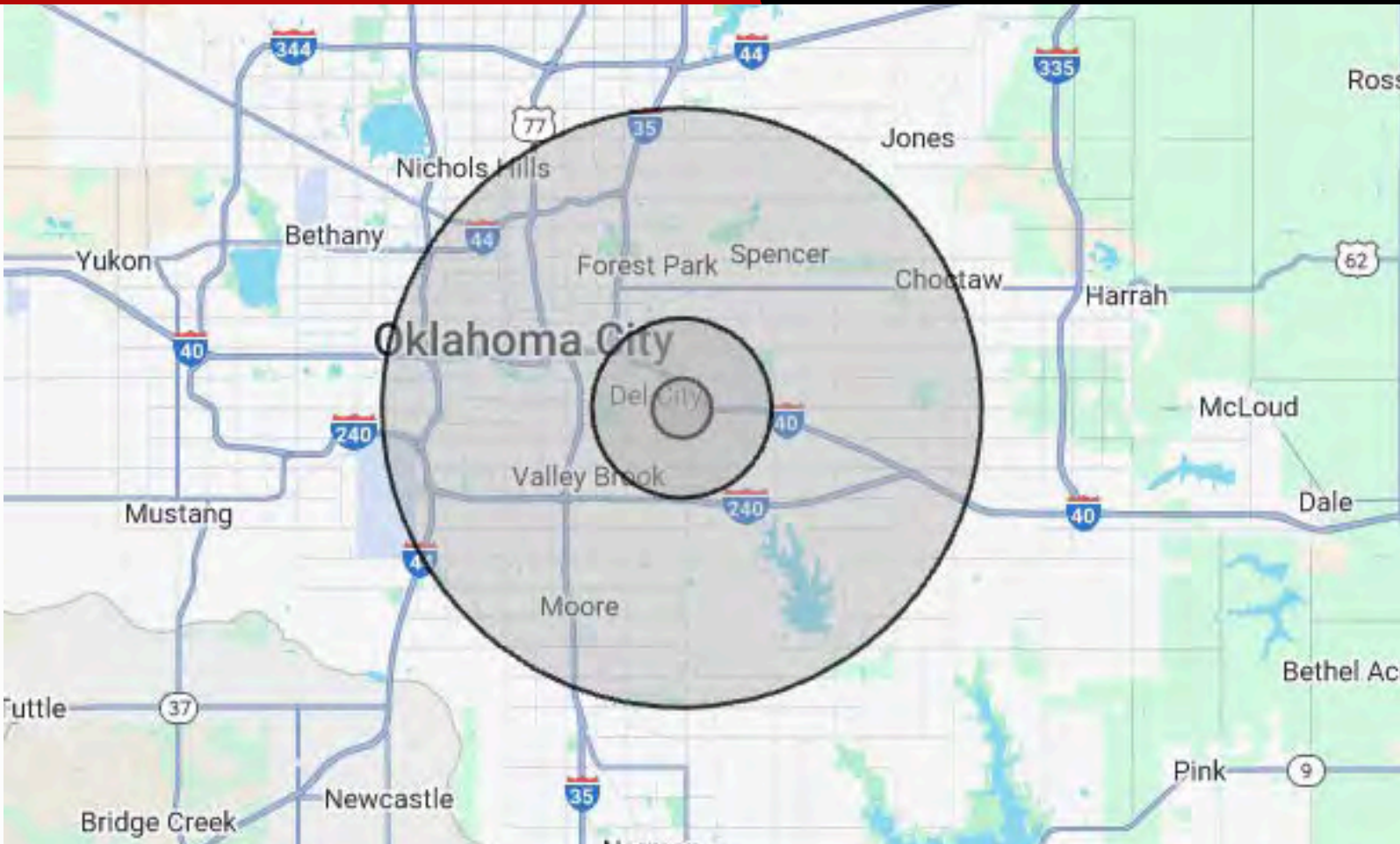
# FOR LEASE

5101 SE 29<sup>th</sup> St, Suite 102  
Del City, OK 73115



**Johnson**  
Commercial Group

JohnsonCommercialGroup.com



## Demographics

### 1 MILE

### 3 MILE

### 10 MILE

Population	11,695	65,095	480,236
Average Age	30	34	36
Employment	5,269	26,249	311,613
Households	4,401	25,630	189,420
Ave. Household Income	\$59,900	\$59,406	\$69,565
Median Household Value	\$104,517	\$101,595	\$151,678

## Traffic Count

### Average Daily Volume

**22,542 Vehicles**

Information Provided By CoStar

**Chris Johnson**  
chris@jcgok.com  
405.435.3572



**BRICK & BEAM**  
REALTY

**Sally Allen**  
sally@jcgok.com  
405.623.7920

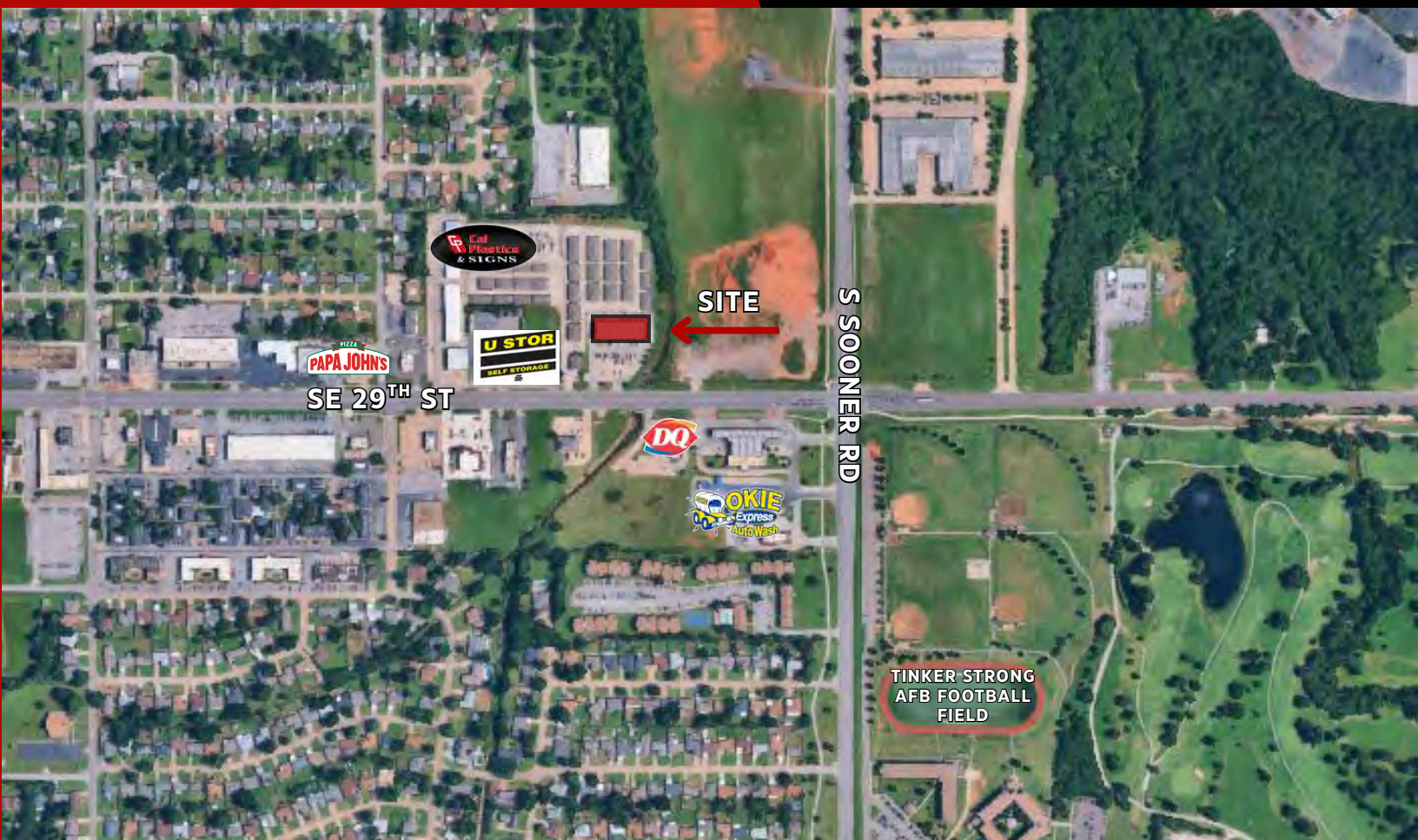


# FOR LEASE

5101 SE 29<sup>th</sup> St, Suite 102  
Del City, OK 73115



JohnsonCommercialGroup.com



## Disclaimer

A real estate broker is not authorized to give legal or tax advice. No representation is made by Johnson Commercial Group or Brick & Beam Realty its agents or employees, as to the legal effect or tax consequences of the information contained herein or any transaction relating thereto. Although all information furnished regarding property sales or financing options are from sources deemed to be reliable, such information has not been verified and no express representation is made on, or is in any way implied as to the accuracy thereof and is subject to errors, omissions, change of price, or other conditions prior to sale or withdrawal without notice.

**Chris Johnson**  
chris@jcgok.com  
405.435.3572



**BRICK & BEAM**  
REALTY

**Sally Allen**  
sally@jcgok.com  
405.623.7920