

165
ELDRIDGE STREET
Between Delancey
& Rivington

2ND FLOOR
6,221 RSF | Ceilings: 11' 4"

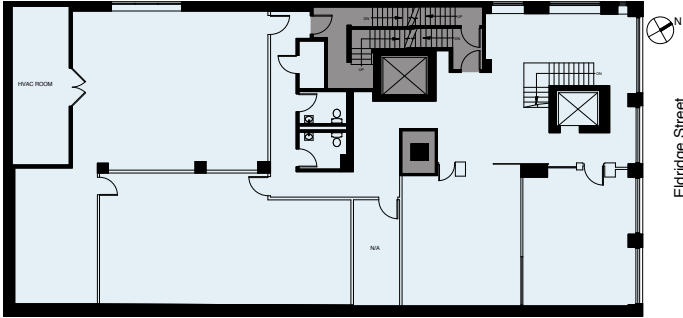
LEASE TERM
Negotiable

POSSESSION
Immediate

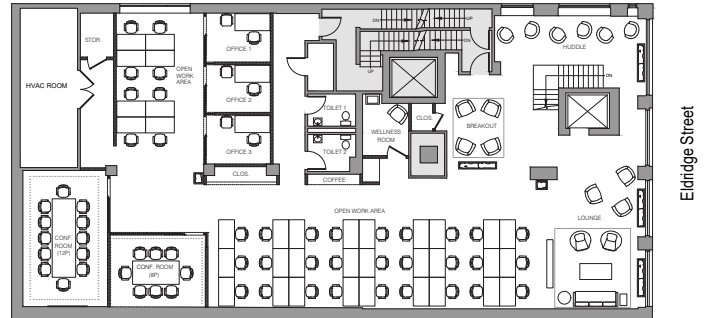
ASKING RENT
\$32 per RSF



2ND FLOOR



As-Built



Office Test Fit

NOTES:

- Semi-private ground floor lobby with elevator
- Large floor-to-ceiling windows
- Attractive option for a variety of users including office, non-profits, fitness, medical, childcare
- Tenant-controlled HVAC
- ADA compliant
- Located just a short walk from Nolita and Essex Market food hall



PLEASE CONTACT:

Christopher Owles
212.604.9002
chris@sinvin.com

James Costello
646.599.2391
james@sinvin.com

SINVIN
COMMERCIAL REAL ESTATE & ADVISORY