

PRIME MEDICAL/DENTAL OFFICE

FOR LEASE

1 MILE TO SUMMERVILLE MEDICAL CENTER

\$19.50/sf
NNN

EXISTING DENTAL/ORTHODONTICS OFFICE

1710 TROLLEY RD., STE. A2 - SUMMERVILLE, SC 29485



RE/MAX
COMMERCIAL®

RE/MAX SOUTHERN SHORES
Robert Pratt
(843) 343-6085:cell
robert@robertpratt.com

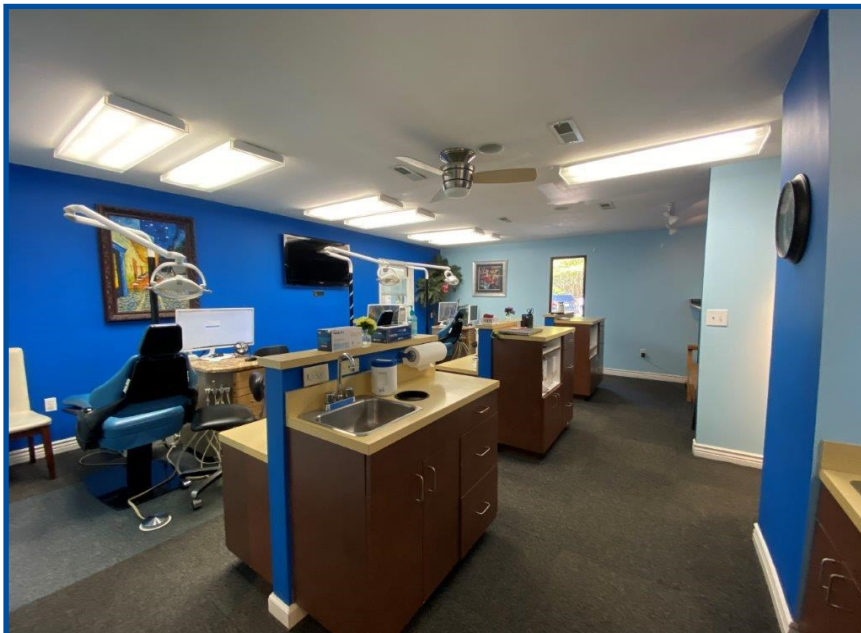
1710 TROLLEY RD., STE. A2

SUMMERVILLE

SOUTH CAROLINA



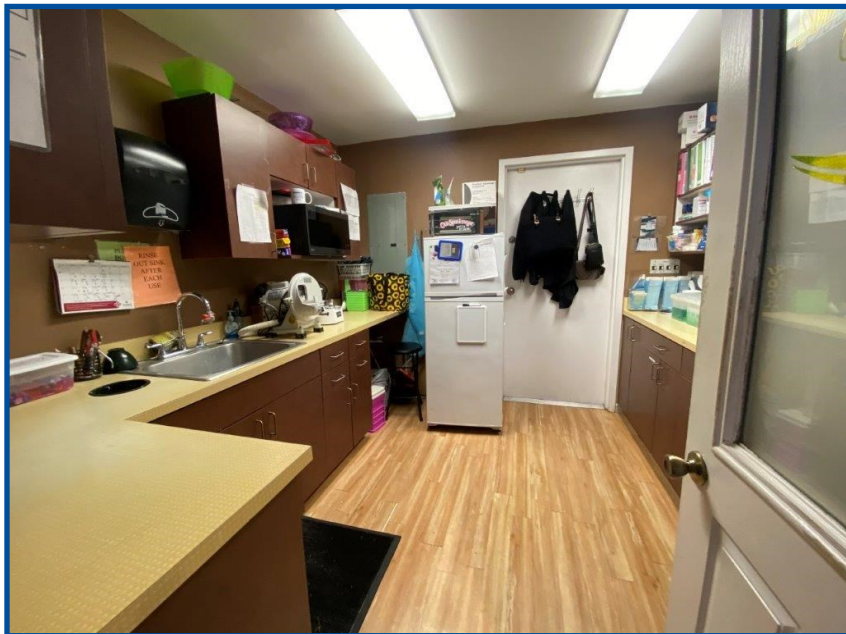
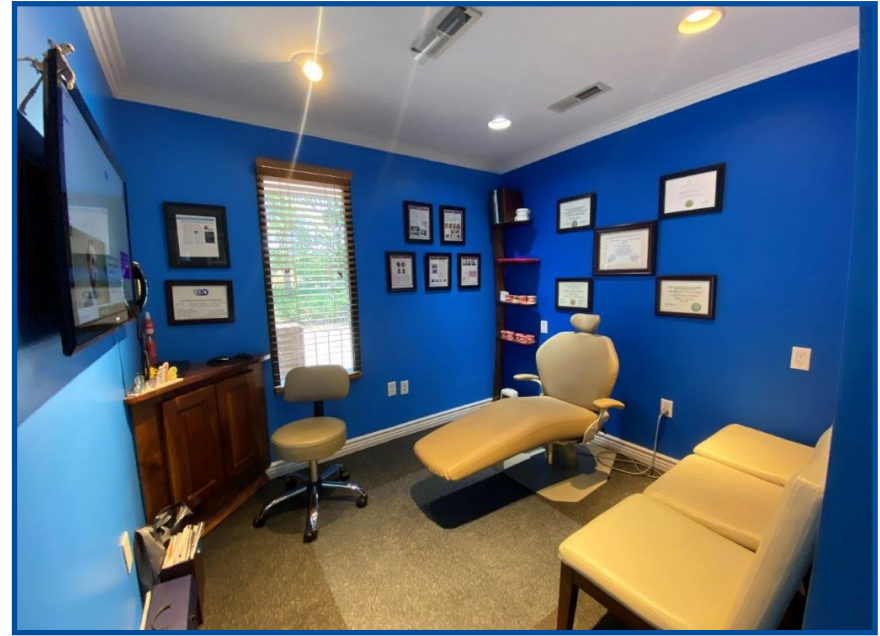
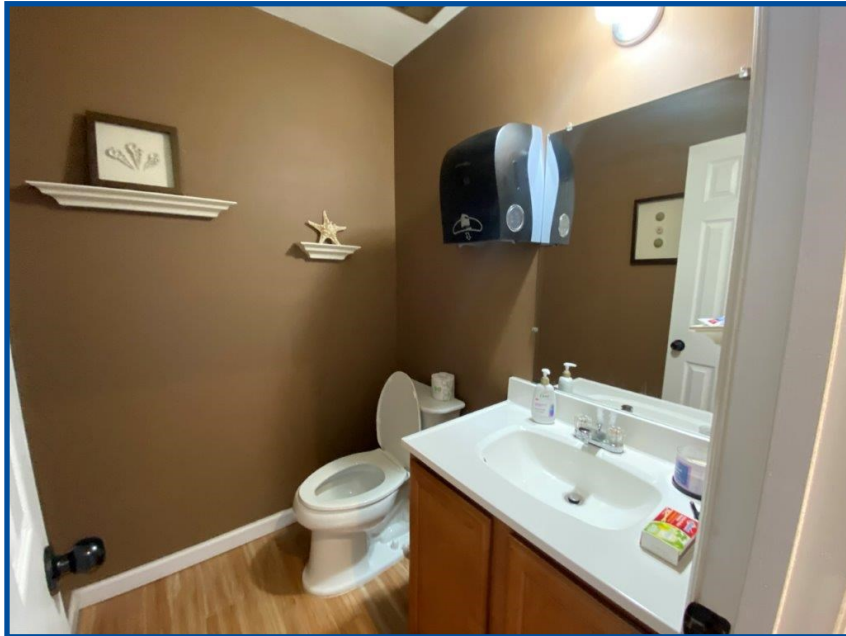
- Approximately 1,940sf current orthodontics office
- Excellent location on Trolley Road surrounded by medical, dental, emergent and urgent care facilities. (27,400vpd)
- NNN includes Taxes, Insurance, Water/Sewer and Common Area Maintenance (Currently \$778.10 monthly)
- Current configuration: Pediatric Orthodontics
- Available January 2025
- Zoned Commercial General in Dorchester County
- Dorchester County TMS: 161-04-02-008



1710 TROLLEY RD., STE. A2

SUMMERVILLE

SOUTH CAROLINA



PRIME MEDICAL/DENTAL OFFICE

FOR LEASE

1 MILE TO SUMMERVILLE MEDICAL CENTER

\$19.50/sf
NNN



1710 TROLLEY RD., STE. A2

SUMMERVILLE

SOUTH CAROLINA

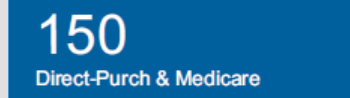
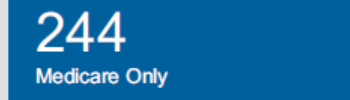
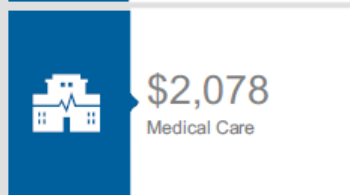
Health Care & Insurance

1710 Old Trolley Rd, Summerville, South Carolina, 29485
Ring of 1 mile

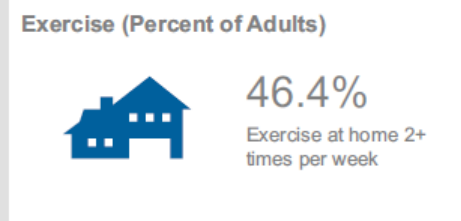
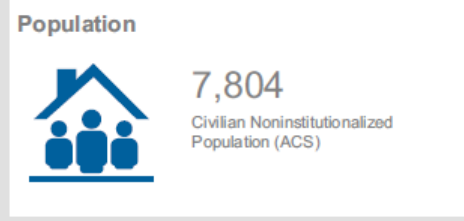
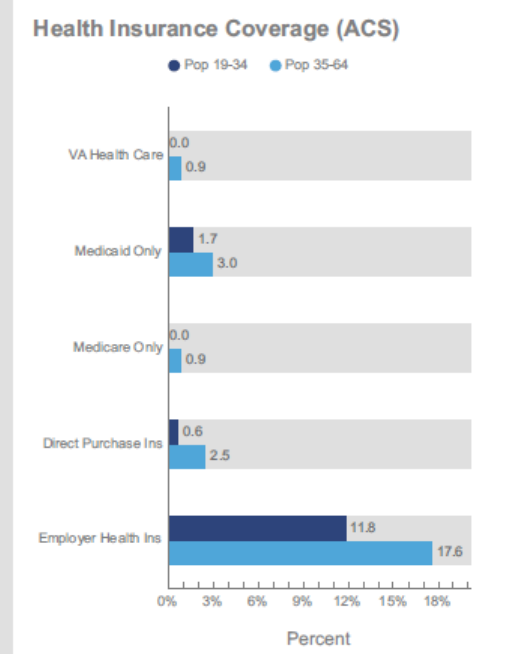
This infographic provides a set of key demographic and health care indicators. [Learn more about this data](#)



Health Care Expenditure



Health Care (Consumer Spending)	Annual Expenditure
Blue Cross/Blue Shield	\$1,114.6
Medicare Payments	\$905.7
Physician Services	\$260.2
Dental Services	\$364.8
Eyecare Services	\$74.4
Lab Tests/X-rays	\$67.4
Hospital Room & Hospital Service	\$223.9
Convalescent/Nursing Home Care	\$28.4

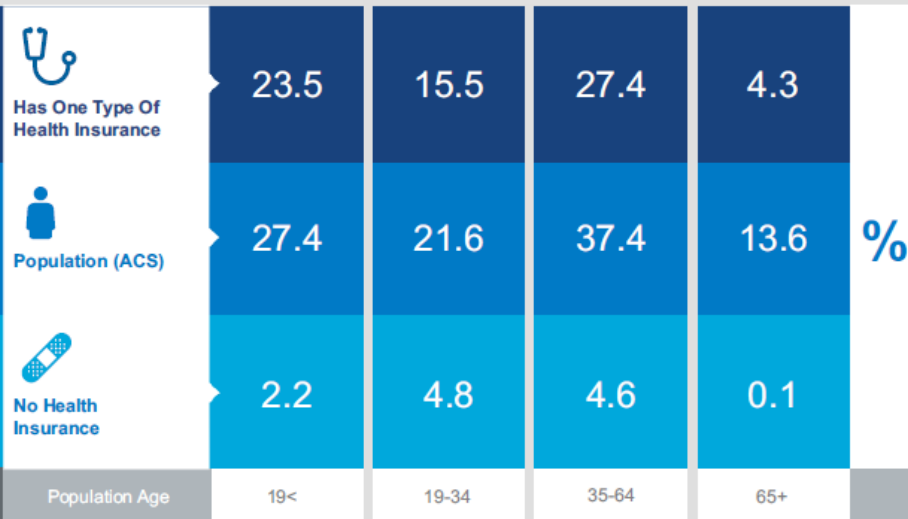


esri THE SCIENCE OF WHERE®
Source: This infographic contains data provided by ACS (2018-2022), Esri-U.S. BLS (2024), Esri-MFR-Simmons (2024).
© 2024 Esri

Health Care & Insurance

1710 Old Trolley Rd, Summerville, South Carolina, 29485
Ring of 3 miles

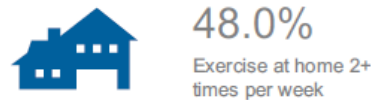
This infographic provides a set of key demographic and health care indicators. [Learn more about this data](#)



Population



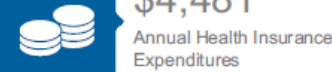
Exercise (Percent of Adults)



Source: This infographic contains data provided by ACS (2018-2022), Esri-U.S. BLS (2024), Esri-MFR-Simmons (2024).

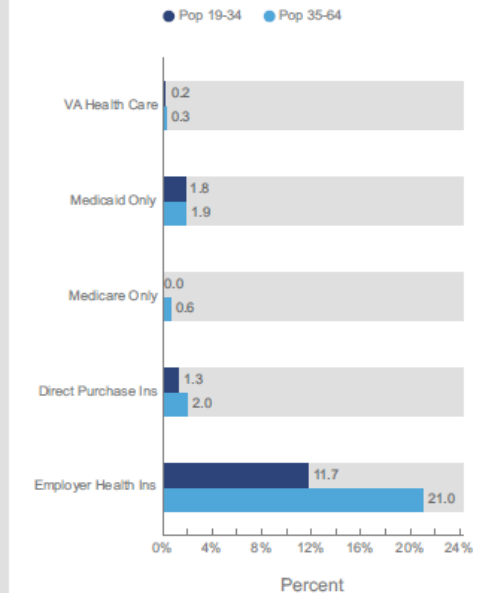
© 2024 Esri

Health Care Expenditure



Health Care (Consumer Spending)	Annual Expenditure
Blue Cross/Blue Shield	\$1,313.8
Medicare Payments	\$971.6
Physician Services	\$308.0
Dental Services	\$419.8
Eyecare Services	\$86.7
Lab Tests/X-rays	\$78.5
Hospital Room & Hospital Service	\$265.4
Convalescent/Nursing Home Care	\$30.0

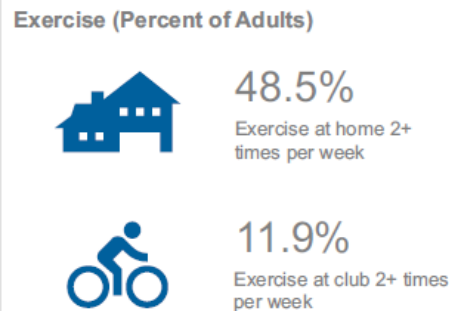
Health Insurance Coverage (ACS)



Health Care & Insurance

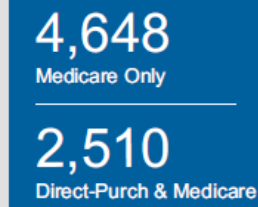
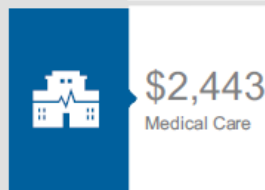
1710 Old Trolley Rd, Summerville, South Carolina, 29485
Ring of 5 miles

This infographic provides a set of key demographic and health care indicators. [Learn more about this data](#)



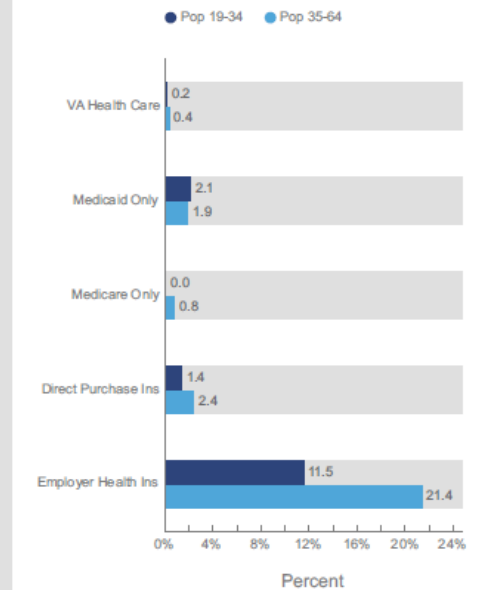
Source: This infographic contains data provided by ACS (2018-2022), Esri+U.S. BLS (2024), Esri-MRI-Simmons (2024).
© 2024 Esri

Health Care Expenditure



Health Care (Consumer Spending)	Annual Expenditure
Blue Cross/Blue Shield	\$1,323.1
Medicare Payments	\$990.9
Physician Services	\$314.6
Dental Services	\$435.0
Eyecare Services	\$88.1
Lab Tests/X-rays	\$80.2
Hospital Room & Hospital Service	\$270.4
Convalescent/Nursing Home Care	\$31.3

Health Insurance Coverage (ACS)



1 MILE TO SUMMERVILLE MEDICAL CENTER

\$19.50/sf
NNN



RE/MAX SOUTHERN SHORES
Robert Pratt
(843) 343-6085:cell
robert@robertpratt.com

1710 TROLLEY RD., STE. A2

SUMMERVILLE

SOUTH CAROLINA