

BEVERLY HILLS SINGLE TENANT MEDICAL BUILDING | FOR LEASE

8677 WILSHIRE BOULEVARD

BEVERLY HILLS, CALIFORNIA 90211

FOR LEASE



DANIEL CHIPRUT

Executive Vice President
CAG

t 310-800-7955
daniel@cag-re.com
CA RE Lic. #01808709

STEVEN SALAS

Senior Managing Director
Newmark

t 310-407-6569 | m 310-508-0660
steven.salas@nrmk.com
CA RE Lic. #01232955

JASMINE RAO

Senior Associate
CAG

m 626-485-7452
jasmine@cagre.com
CA RE Lic. #02201376

NEWMARK

cag | COMMERCIAL
ASSET GROUP

BEVERLY HILLS SINGLE TENANT MEDICAL BUILDING | FOR LEASE

8677 WILSHIRE BOULEVARD BEVERLY HILLS, CALIFORNIA 90211

Building Information

Available Space	Entire Building: ±4,302 RSF
Asking Rent	\$6.75 MG
Term	5-10 years
Availability	Within 60 days of lease execution
Parking	Available at 8617 Wilshire at FMV

Building Highlights

- Turn key medical building with unique opportunity to occupy entire building
- Prestigious Beverly Hills location, less than 1 mile from Cedars-Sinai Hospital
- Excellent walk-ability to Beverly Hills shops, hotels, and dining
- Spacious two-story waiting room
- Prime Wilshire Boulevard signage opportunity

NEWMARK

cag | COMMERCIAL
ASSET GROUP

BEVERLY HILLS SINGLE TENANT MEDICAL BUILDING | FOR LEASE

8677 WILSHIRE BOULEVARD BEVERLY HILLS, CALIFORNIA 90211

SUITE/PROPERTY IMAGES



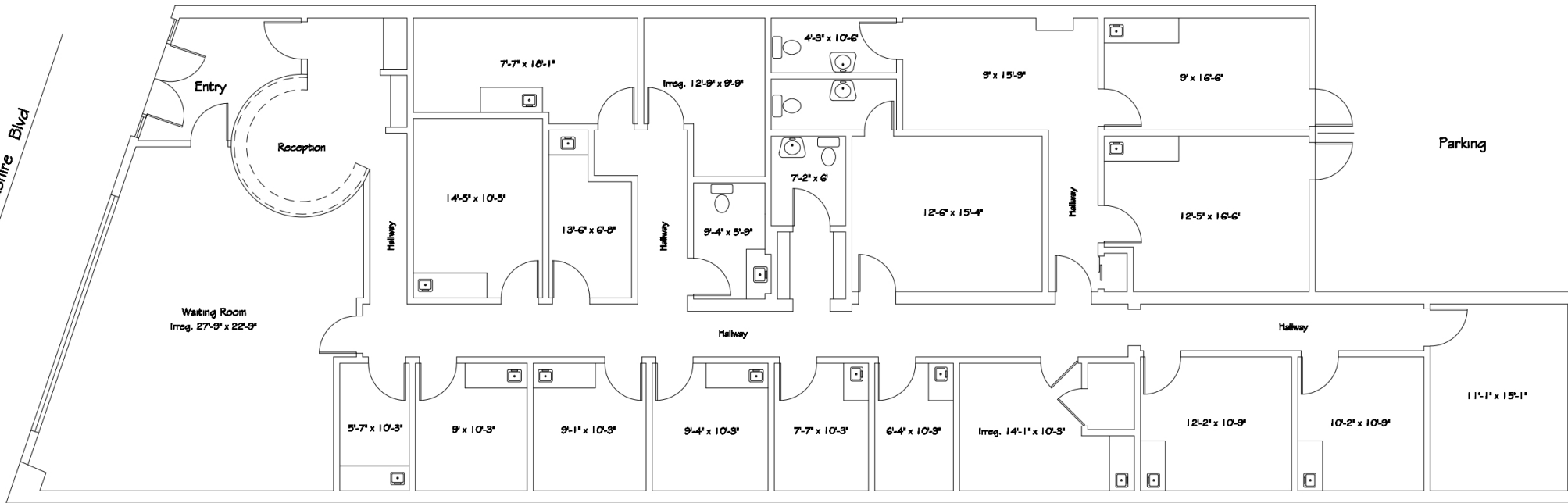
NEWMARK

cag | COMMERCIAL
ASSET GROUP

BEVERLY HILLS SINGLE TENANT MEDICAL BUILDING | FOR LEASE

8677 WILSHIRE BOULEVARD BEVERLY HILLS, CALIFORNIA 90211

ENTIRE BUILDING | ±4,302 RSF



BEVERLY HILLS SINGLE TENANT MEDICAL BUILDING | FOR LEASE

8677 WILSHIRE BOULEVARD BEVERLY HILLS, CALIFORNIA 90211

AREA AMENITIES

8677
WILSHIRE BLVD



BEVERLY HILLS SINGLE TENANT MEDICAL BUILDING | FOR LEASE

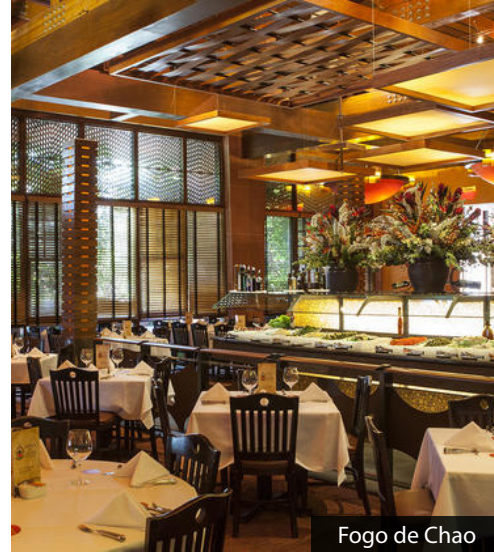
8677 WILSHIRE BOULEVARD BEVERLY HILLS, CALIFORNIA 90211



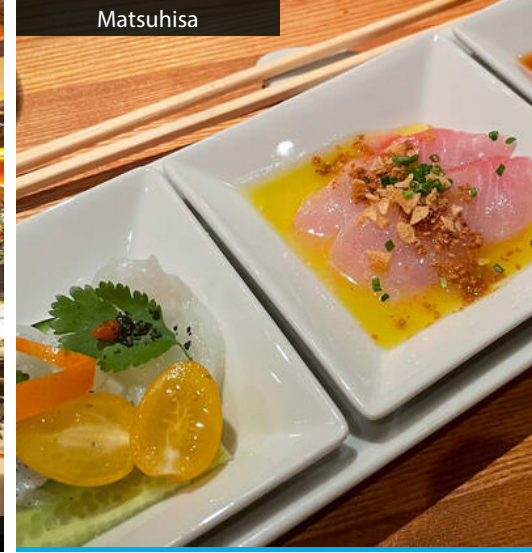
Four Seasons Los Angeles at Beverly Hills



Lawry's



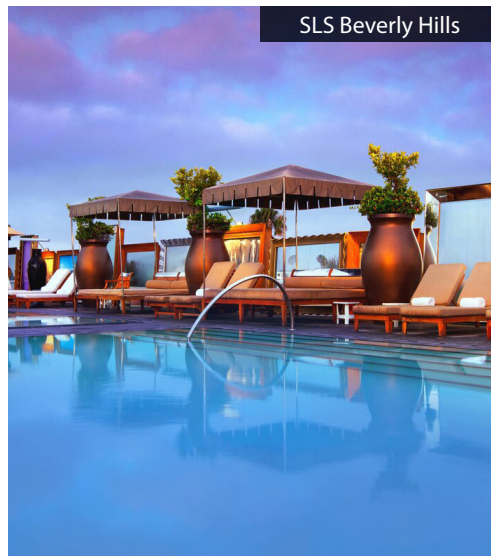
Fogo de Chao



Matsuhiya



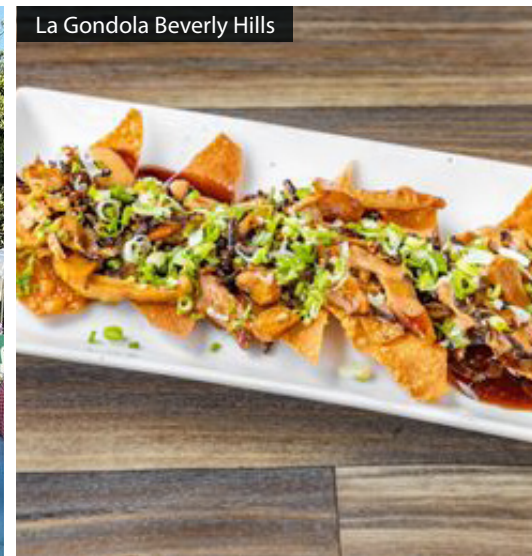
The Beverly Center



SLS Beverly Hills



The Ivy



La Gondola Beverly Hills

8677 WILSHIRE BOULEVARD

BEVERLY HILLS, CALIFORNIA 90211

FOR LEASE

EXCLUSIVELY PRESENTED BY:

DANIEL CHIPRUT

Executive Vice President
CAG

t 310-800-7955
daniel@cag-re.com
CA RE Lic. #01808709

STEVEN SALAS

Senior Managing Director
Newmark

t 310-407-6569 | m 310-508-0660
steven.salas@nmrk.com
CA RE Lic. #01232955

JASMINE RAO

Senior Associate
CAG

m 626-485-7452
jasmine@cag-re.com
CA RE Lic. #02201376

ARMAN HEKMATI M.D.
INTERNAL MEDICINE
GERIATRIC MEDICINE

Reliable Medical
Associates

nmrk.com

NEWMARK

cag | COMMERCIAL
ASSET GROUP

Corporate License #01355491

Procuring brokers shall only be entitled to a commission, calculated in accordance with the rates approved by your principal only if such procuring broker executes a brokerage agreement acceptable to us and our principal and the conditions set forth in the brokerage agreement are fully and unconditionally satisfied. Although all information furnished regarding property for sale, rental, or financing is from sources deemed reliable, such information has not been verified and no express representation is made nor is any to be implied as to the accuracy thereof and it is submitted subject to errors, omissions, change of price, rental or other conditions, prior sale, lease or financing, or withdrawal without notice and to any special conditions imposed by your principal.