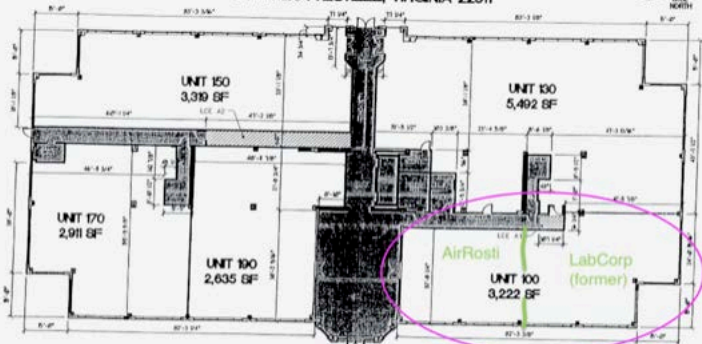


PJP III CONDOMINIUM
600 PETER JEFFERSON PARKWAY
CHARLOTTESVILLE, VIRGINIA 22911



FIRST FLOOR PLAN



The undersigned duly licensed architect hereby certifies that this plan is accurate and complies with Virginia Code Section 55-73.5B(2), as amended, and that all units depicted thereon are substantially complete.

(Dimensions are based on BOMA 1995 (Building Owners and Managers Association).)

Architect Signature:

5.3.05
 Date

LIMITED COMMON ELEMENT (LCE)

KEY	LCE	GROSS SF	UNITS APPLICABLE TO
A1	44 SF	UNIT 100 UNIT 130	
	236 SF	UNIT 150 UNIT 170 UNIT 190	

GENERAL COMMON ELEMENT (GCE)
 THE GCE IS SHOWN FULLY SHADDED ON THE PLAN

