




Investment
Properties
Corporation

OFFICE SPACE
FOR LEASE

BEASLEY BUILDING

 One block west of US41 & just north of Harbour Drive

3033 Riviera Drive | Naples, Florida 34103



Google
Maps

CONTACT (239) 261-3400

Patrick Fraley, ext. 118, patrick@ipcnaples.com

John Cheffy, ext. 182, john@ipcnaples.com

Investment Properties Corporation of Naples
3838 Tamiami Trail North Suite 402
Naples Florida 34103-3586

Tel: 239-261-3400 Fax: 249-261-7579 www.ipcnaples.com

Licensed Real Estate Broker

The statement and figures presented herein, while not guaranteed, are secured from sources we believe authoritative. Subject to prior sale, lease, withdrawal and price change without notice.



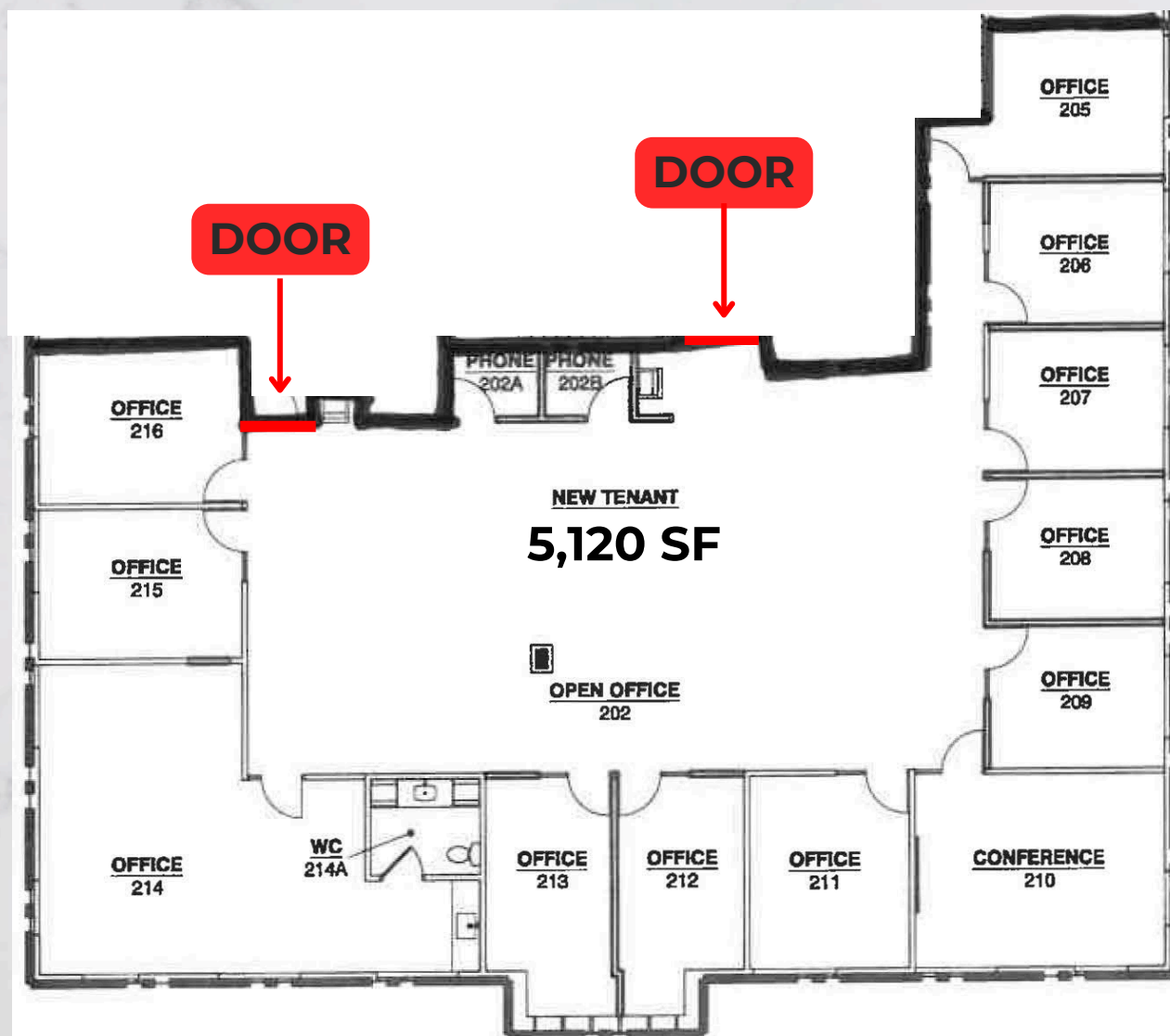
BEASLEY BUILDING

One block west of US41 & just north of Harbour Drive

3033 Riviera Drive | Naples, Florida 34103

LEASING INFORMATION

<u>SUITES</u>	<u>SIZE/SF</u>	<u>BASE RENT</u> PSF/YR	<u>EST. CAM</u> PSF 2025	<u>MONTHLY</u> <u>TOTAL</u>
210	5,120 SF	\$25.00 PSF NNN	\$5.93 PSF	\$13,196.80



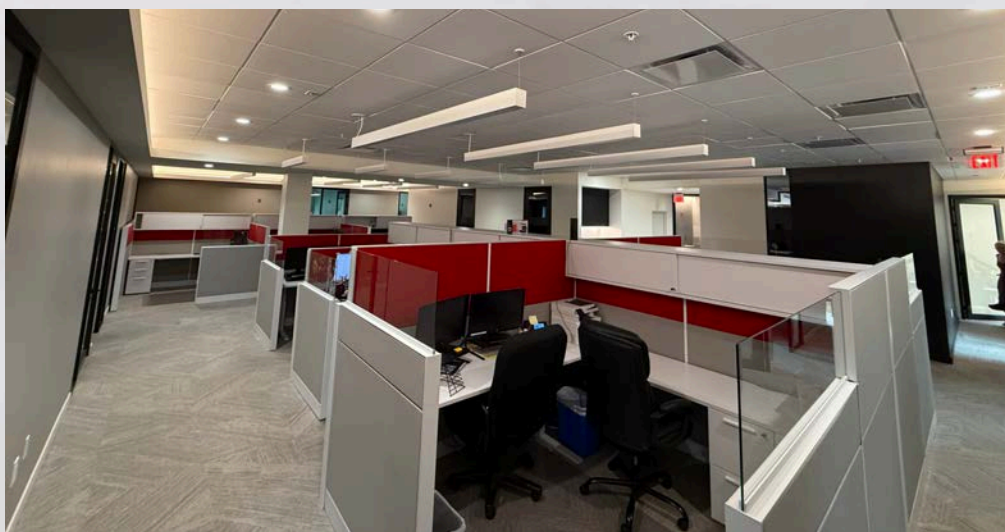
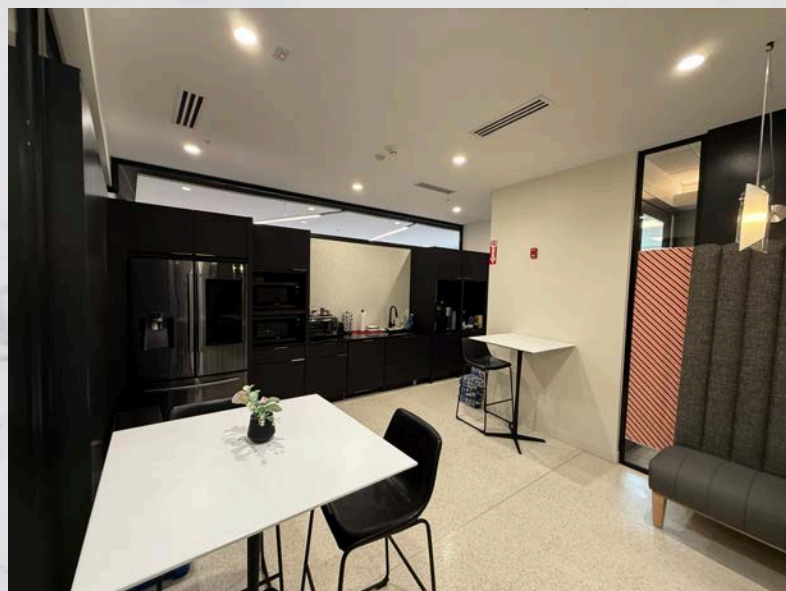
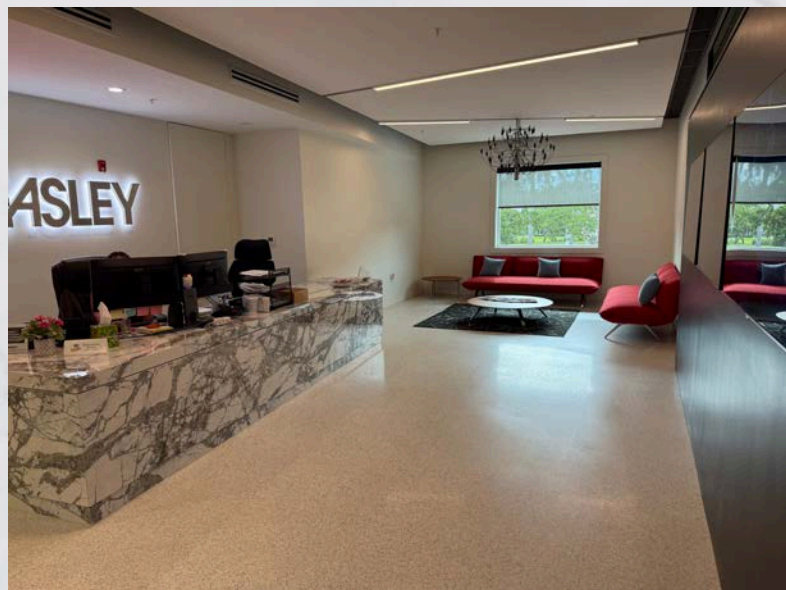
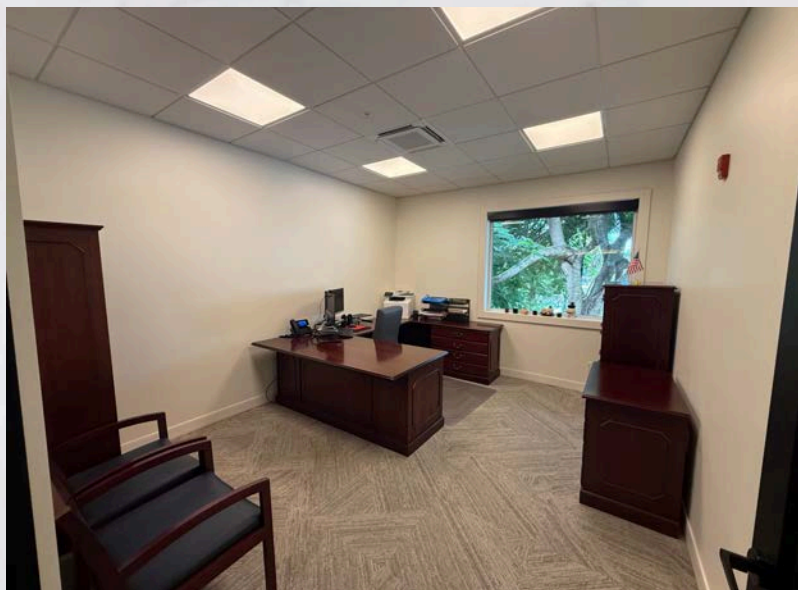


**Investment
Properties
Corporation**

BEASLEY BUILDING

📍 One block west of US41 & just north of Harbour Drive

3033 Riviera Drive | Naples, Florida 34103





Investment
Properties
Corporation

BEASLEY BUILDING

One block west of US41 & just north of Harbour Drive

3033 Riviera Drive | Naples, Florida 34103

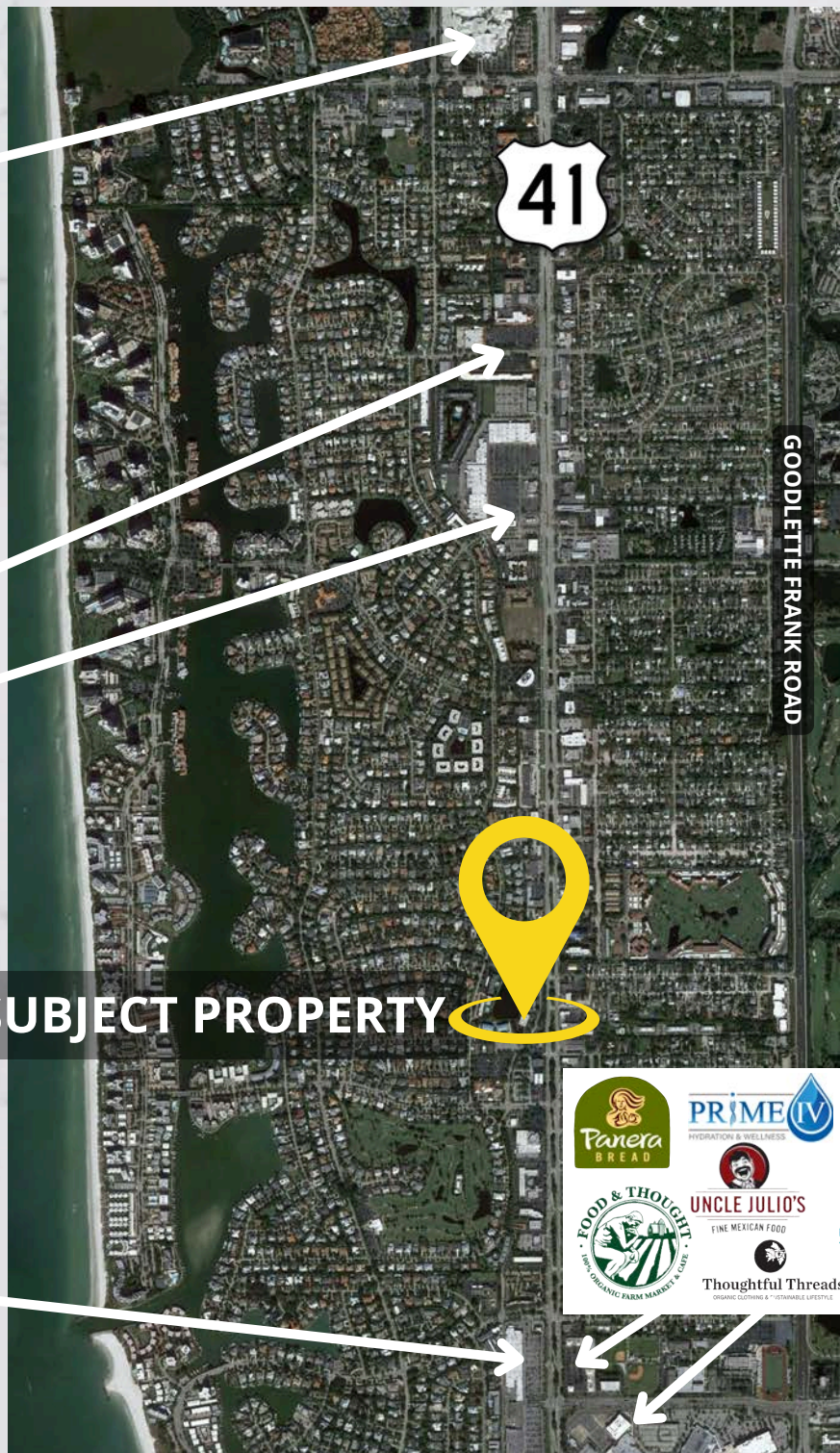
WATERSIDESHOPS



AMENITY RICH LOCATION FOR EMPLOYEES



SUBJECT PROPERTY



Google
Maps

DEMOGRAPHICS (2025)	1 MILE	3 MILES	5 MILES
Est. Population	7,034	33,148	90,798
Est. Avg. Household Income	\$253,813	\$233,723	\$186,427