



**228 North Henry Street
Madison, WI 53703**

**For
Sublease**

Space Profile

Premises	Suite 300
Suite SF	6,459 RSF
Rental Rate	Negotiable MG (Tenant responsible for in-suite electric and janitorial service)
Availability	Immediate
Term	Through 7/31/2026
Submarket	CBD

Features

- Beautiful, historic building with tons of character
- Hard wood floors, exposed bricks and open ceiling plan
- Suite is located on floors 2 and 3 of the building
- 1st floor of the building is occupied by Short Stack Restaurant
- State Street location

For More Information

Cresa
613 Williamson Street
Suite 210
Madison, WI 53703
cresa.com/madison



Ross Ridders
608.239.7724
ridders@cresa.com

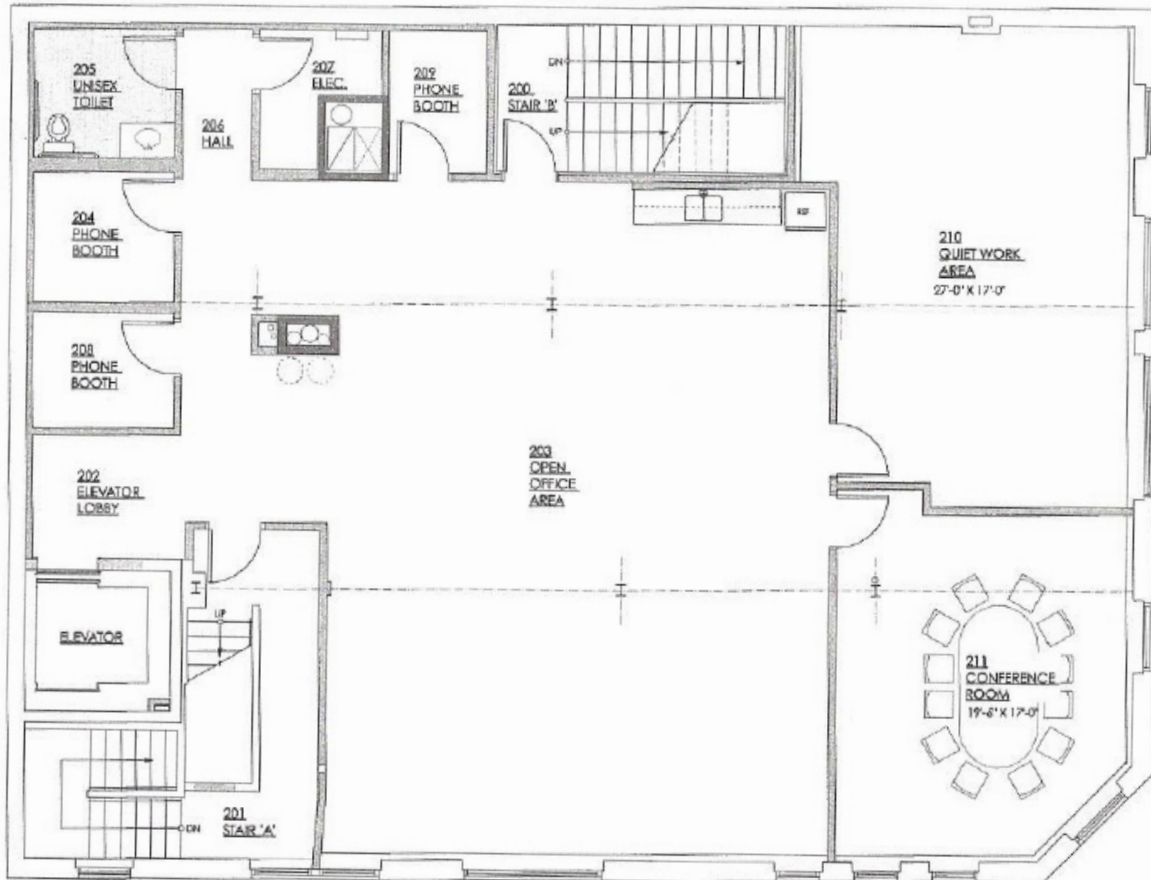
Map



Even though obtained from sources deemed reliable, no warranty or representation, express or implied, is made as to the accuracy of the information herein, and it is subject to errors, omissions, change of price, rental or other conditions, withdrawal without notice, and to any special listing conditions imposed by our principals.



2nd Floor- Floor Plan



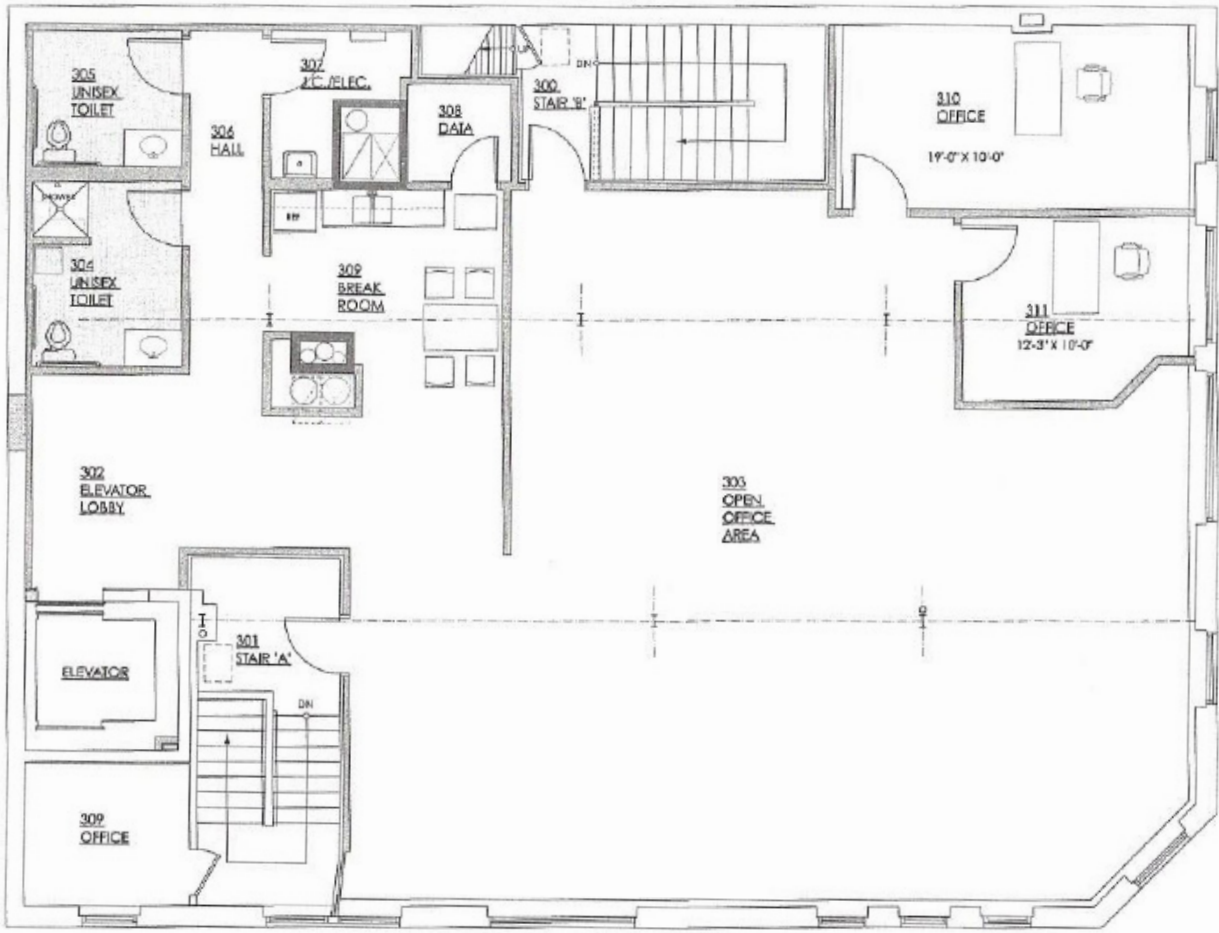
For More Information

Cresa
613 Williamson Street
Suite 210
Madison, WI 53703
cresa.com/madison




Ross Ridders
608.239.7724
ridders@cresa.com

3rd Floor- Floor Plan



For More Information

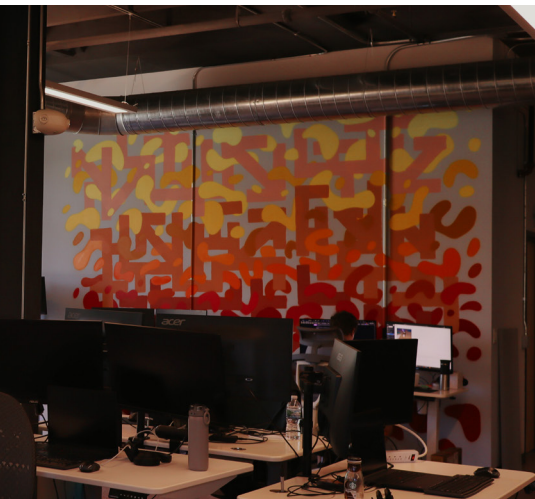
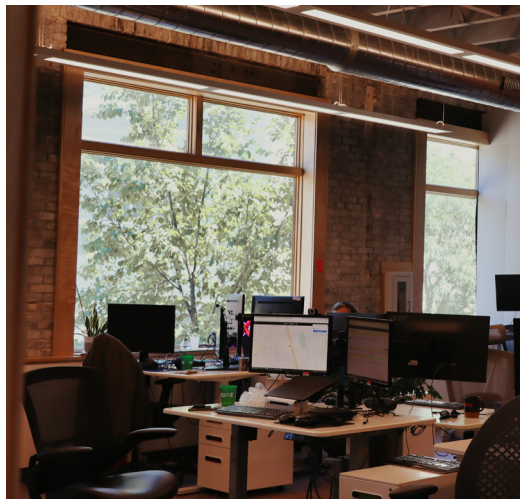
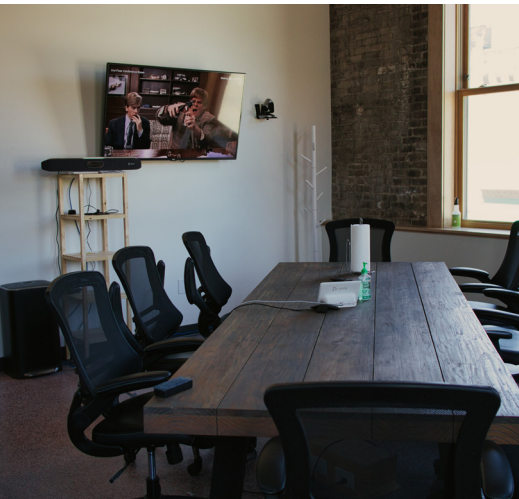
Cresa
613 Williamson Street
Suite 210
Madison, WI 53703
cresa.com/madison



Ross Ridders
608.239.7724
ridders@cresa.com



228 N Henry Street Madison, WI 53703



Cresa © 2019. All rights reserved. The information contained in this document has been obtained from sources believed reliable. While Cresa does not doubt its accuracy, Cresa has not verified it and makes no guarantee, warranty, or representation about it. It is your responsibility to independently confirm its accuracy and completeness. Any projections, opinions, assumptions or estimates used are for example only and do not represent the current or future performance of the property. The value of this transaction to you depends on tax and other factors which should be evaluated by your tax, financial and legal advisors. You and your advisors should conduct a careful, independent investigation of the property to determine to your satisfaction the suitability of the property for your needs.