



855 GEARY STREET  
SAN FRANCISCO



***Property Highlights:***

- + 34,029 RSF, 3-level parking garage
- + 56 parking stalls (42 equipped with DCFC charging & 12 equipped with L2 charging)
- + 2.5 MW of power on-site
- + Office and restrooms on the ground floor
- + Flexible term
- + Fleet charging use allowed
- + RC-4 zoning

**Luke  
Ogelsby**

Executive Vice President

+1 415 772 0427

luke.ogelsby@cbre.com

Lic. 01422599

**Ryan  
Lowe**

Vice President

+1 415 772 0314

ryan.lowe@cbre.com

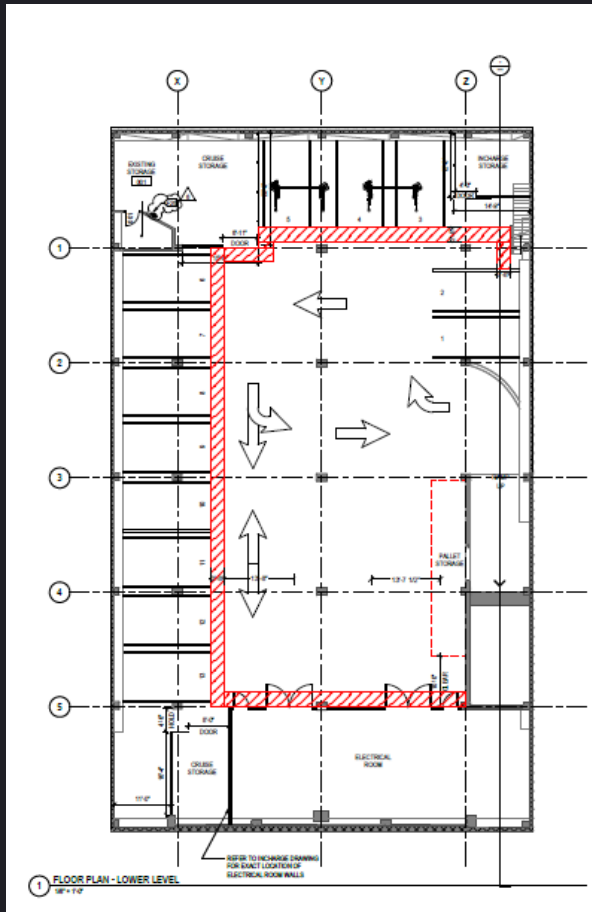
Lic. 01940857

**CBRE**

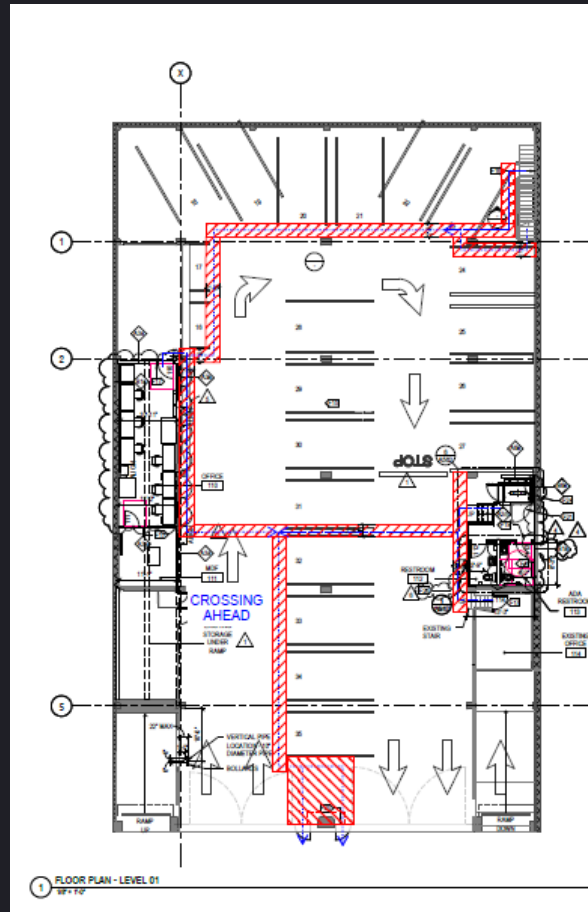
# Floorplans

855 Geary Street

## Lower Level



## Ground Level



## 2nd Floor

