

3203 KASHIWA STREET, TORRANCE, CA 90505

±19,073 SF Building on ±46,911 SF Land



LEASE RATE
\$1.55/SF
NNN



MICHAEL GRANNIS

Lic. 01393628

Phone: 310 567 1650

mike@westpacpartners.com



3203 KASHIWA STREET
TORRANCE, CA 90505

±19,073 SF BUILDING | ±46,911 SF LAND

LEASE RATE - \$1.55/SF NNN

FEATURES:



Approximately 5,700 SF
of Office Space



2 Dock High Doors
(both 10' x 10')



2 Ground Level Doors
(10' x 12' and 10' X 14')



Fenced Yard



36 Parking Spaces on Site



Sprinklers Throughout



16' Minimum Clearance Height



1,600 Amps of Power

2022 DEMOGRAPHICS:



POPULATION

1 Mile	21,008
3 Miles	205,952
5 Miles	487,817



AVERAGE HH INCOME

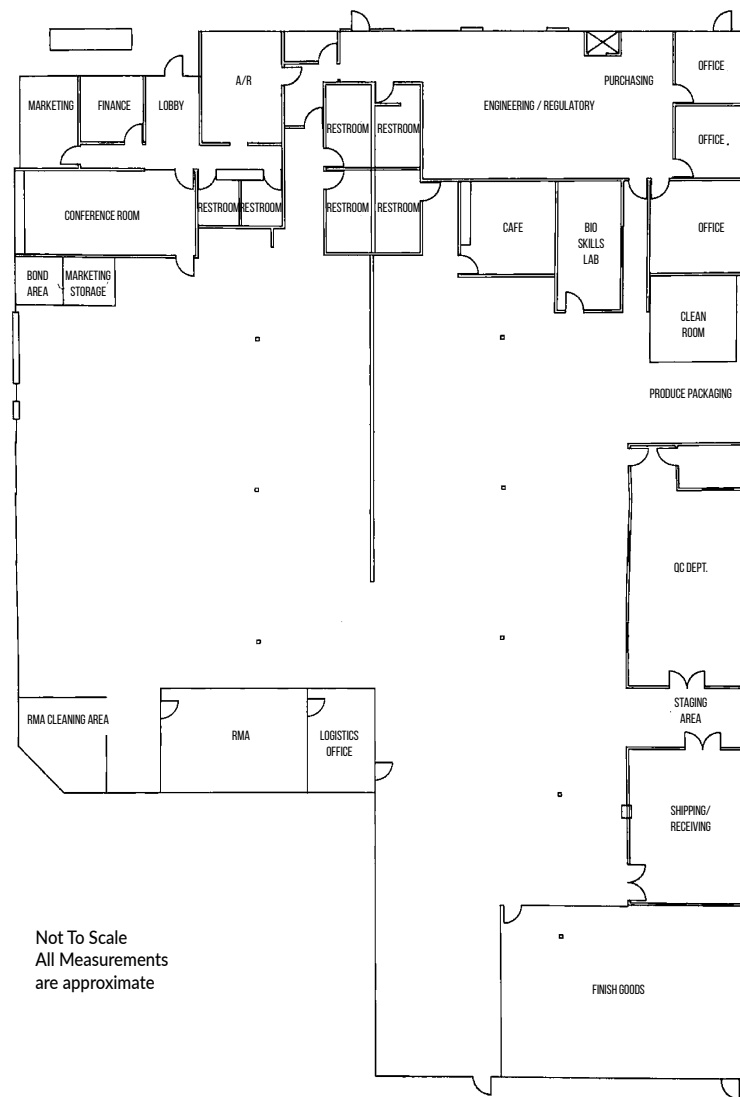
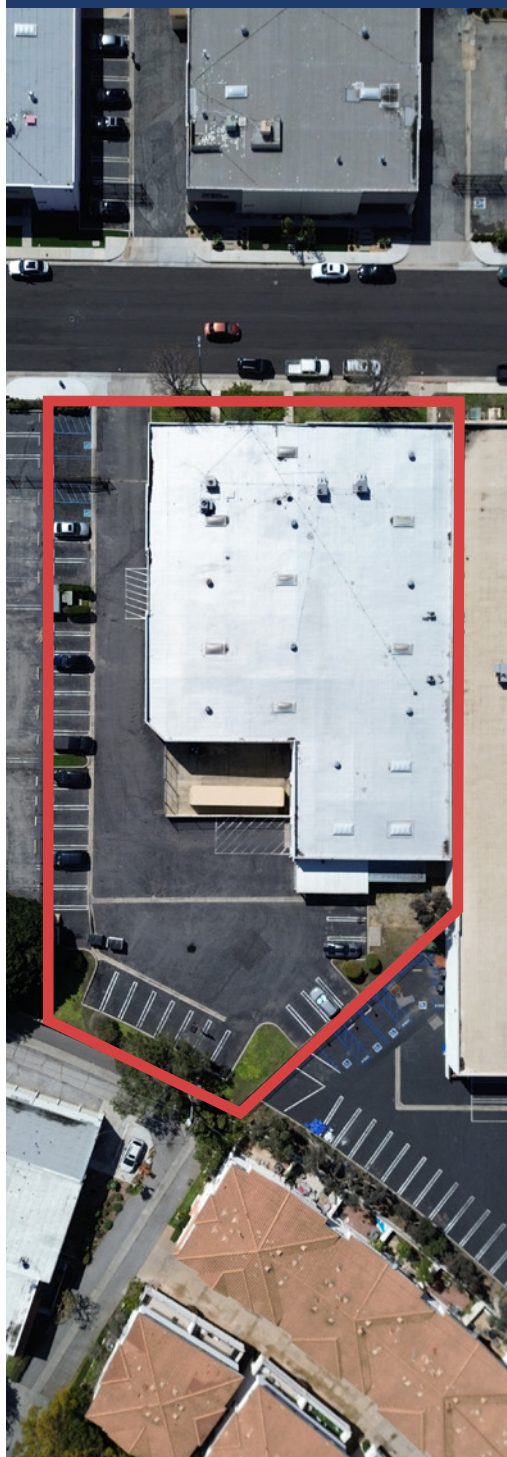
1 Mile	\$149,507
3 Miles	\$162,773
5 Miles	\$171,696



DAYTIME POPULATION

1 Mile	24,978
3 Miles	106,542
5 Miles	211,759

Demographic Source: Applied Geographic
Solutions 11/2024, TIGER Geography



Not To Scale
All Measurements
are approximate

**3203 KASHIWA STREET
TORRANCE, CA 90505**

±19,073 SF BUILDING | ±46,911 SF LAND

LEASE RATE - \$1.55/SF NNN



3203 KASHIWA STREET
TORRANCE, CA 90505

±19,073 SF BUILDING | ±46,911 SF LAND

LEASE RATE - \$1.55/SF NNN



3203 KASHIWA STREET
TORRANCE, CA 90505

±19,073 SF BUILDING | ±46,911 SF LAND

LEASE RATE - \$1.55/SF NNN



WESTPAC
PARTNERS

3203 KASHIWA STREET, TORRANCE, CA 90505

±19,073 SF Building on ±46,911 SF Land



For additional information, please contact:

MICHAEL GRANNIS

Lic. 01393628

Phone: 310 567 1650

mike@westpacpartners.com



Westpac Partners | www.westpacpartners.com
11815 Via El Prado, Suite 300, Redondo Beach, CA 90277

©2025 | Westpac Partners | The information being provided by Westpac Partners and/or its sources is deemed reliable. While we have no reason to doubt its accuracy, we do not guarantee it. Any information, measurements, facts and actual drawings shown are approximate, subject to change, or withdrawal without notice and should be independently verified by you and may not be relied upon as a precise representation by this office. No warranties or representations are made as to the condition of the property or any hazards contained therein nor any to be implied. | Logos are for identification purposes only and may be trademarks of their respective companies. 3203Kashiwa_BRO_v03.indd | 03/25