

# WARNER COMMERCE CENTER 375 EAST WARNER ROAD, SUITE 3

Chandler, Arizona

**LEE & ASSOCIATES**  
COMMERCIAL REAL ESTATE SERVICES

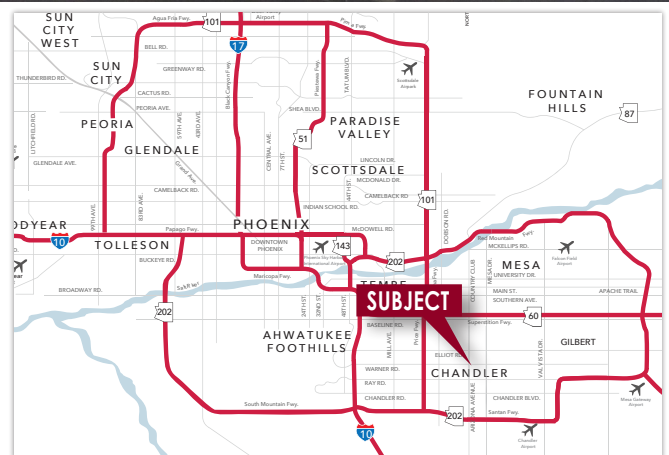
[www.learizona.com](http://www.learizona.com)

**LEASE/SALE**



## FEATURES:

- ±6,341 Square Feet
- ±1,500 SF Office
- EVAP Cooled Warehouse
- 18' Clear Height
- Grade Level Loading
- Common Truckwell
- Power: 225 Amps / 208 Volts
- Great Visibility & Frontage on Warner Avenue



FOR MORE INFORMATION PLEASE CONTACT:

**TJ SWEARENGIN**  
PRINCIPAL  
602.912.3530  
[tjswearingin@learizona.com](mailto:tjswearingin@learizona.com)

Lee & Associates Arizona  
5090 North 40th Street  
Suite 300  
Phoenix, AZ  
85018

**LEE & ASSOCIATES**  
COMMERCIAL REAL ESTATE SERVICES



All information furnished regarding property for sale, rental or financing is from sources deemed reliable, but no warranty or representation is made to the accuracy thereof and same is submitted to errors, omissions, change of price, rental or other conditions prior to sale, lease or financing or withdrawal without notice. No liability of any kind is to be imposed on the broker herein.

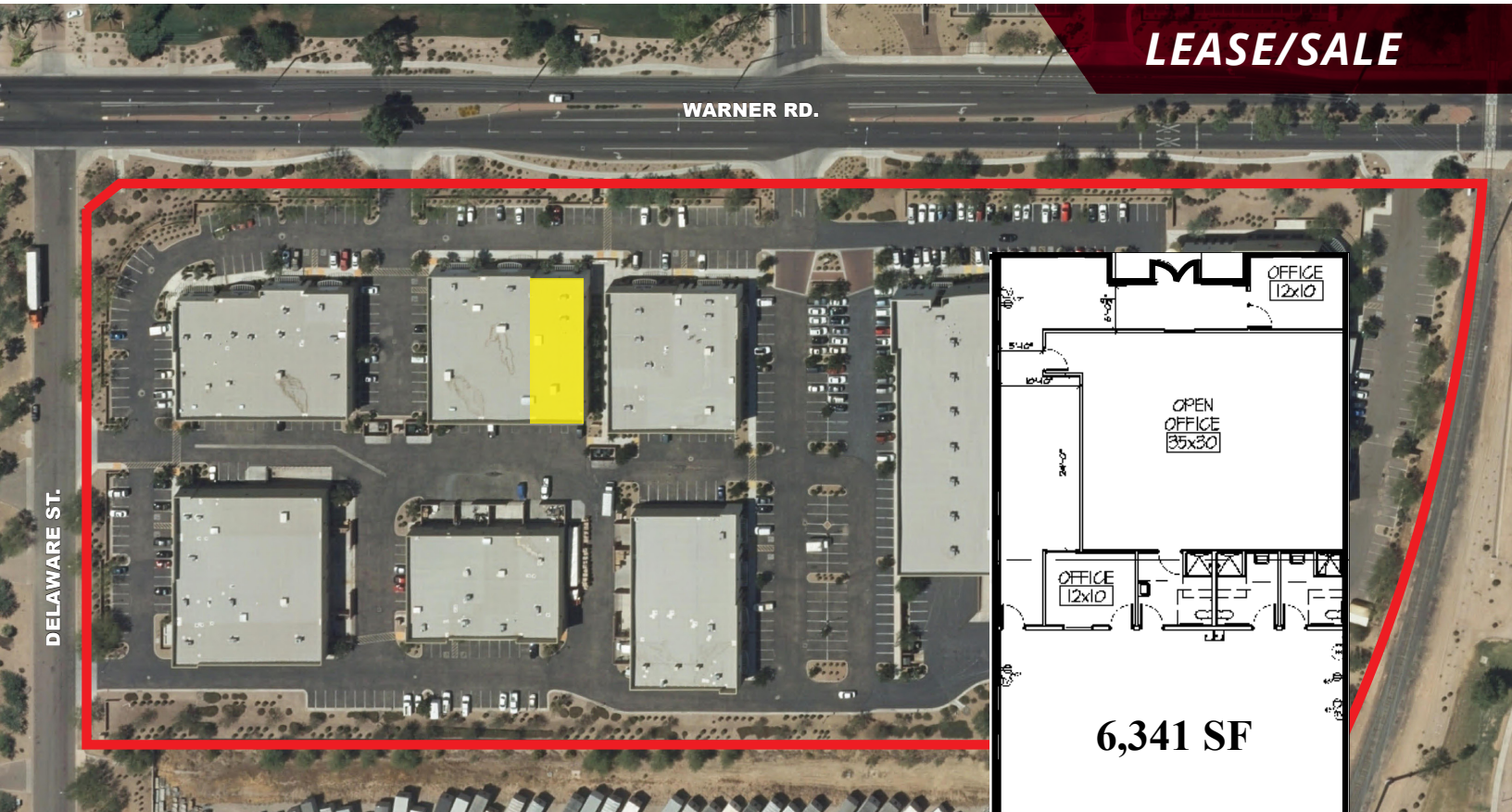
# WARNER COMMERCE CENTER 375 EAST WARNER ROAD, SUITE 3

Chandler, Arizona

**LEE & ASSOCIATES**  
COMMERCIAL REAL ESTATE SERVICES

[www.learizona.com](http://www.learizona.com)

**LEASE/SALE**



**375 EAST WARNER ROAD  
SUITE 3**



FOR MORE INFORMATION PLEASE CONTACT:

**TJ SWEARENGIN**  
PRINCIPAL  
602.912.3530  
[tjswarengin@learizona.com](mailto:tjswarengin@learizona.com)

Lee & Associates Arizona  
5090 North 40th Street  
Suite 300  
Phoenix, AZ  
85018

**LEE & ASSOCIATES**  
COMMERCIAL REAL ESTATE SERVICES



All information furnished regarding property for sale, rental or financing is from sources deemed reliable, but no warranty or representation is made to the accuracy thereof and same is submitted to errors, omissions, change of price, rental or other conditions prior to sale, lease or financing or withdrawal without notice. No liability of any kind is to be imposed on the broker herein.