

162-04 Jamaica Avenue, Jamaica, NY

Property Features

- ❖ Immediate availability
- ❖ Long term leases
- ❖ Build-to-suit
- ❖ ADA Passenger elevator
- ❖ Three exclusive ADA restrooms
- ❖ Fantastic signage
- ❖ Security on site
- ❖ One block to municipal parking
- ❖ Perimeter windows facing Jamaica Avenue

Location

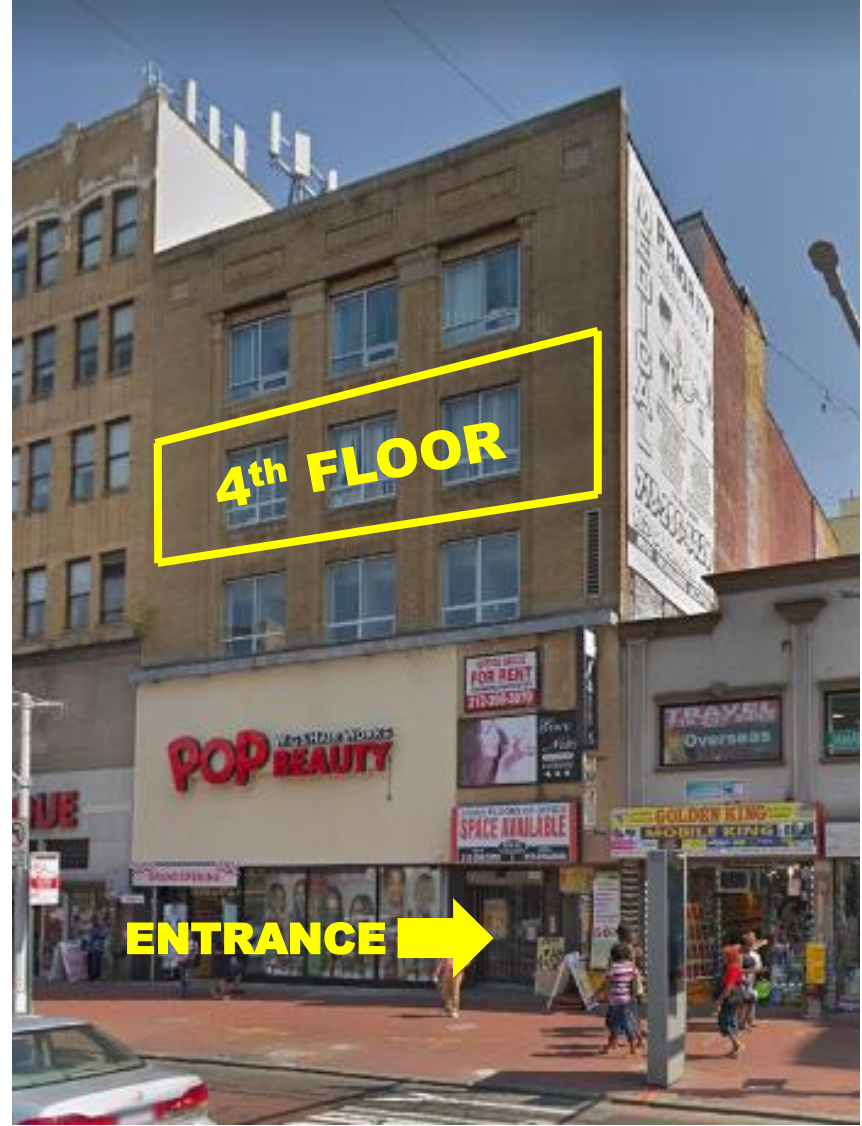
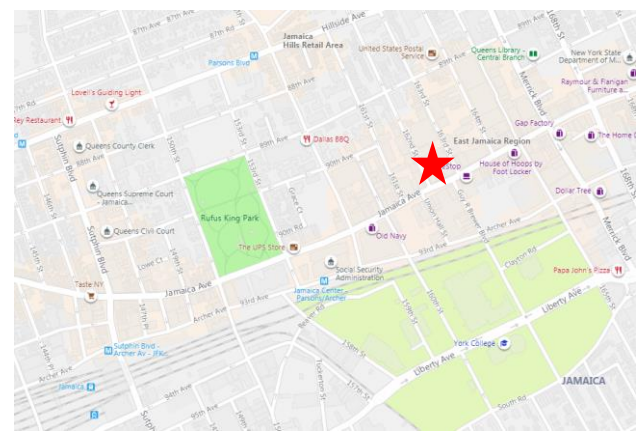
Heavy pedestrian traffic
Easy access to Van Wyck Expwy and Grand Central Parkway

Transportation

E J Z Several bus lines at door and near subways, LIRR & AirTrain

**Call For Pricing
Best Price in Jamaica!!!**

**Full Floor
Opportunity
4,700 Sq. Ft.
4th Floor**
*~ Ideal for
General Office, Medical,
School or Government
Agency ~*



*For Further Information and Inspection, Please Contact Exclusive Agent:
Melissa Grasso • Salesperson • (718) 371-0127 • mgrasso@s-z.com*

**3333 New Hyde Park Road, Suite 307, New Hyde Park, NY 11042 • (718) 392-5959
www.s-z.com**