

# Medical Office Space

## 330 N Madison Joliet, Illinois 60435

### PROPERTY DETAILS

- Medical Office Space available:
  - Suite L15 855 RSF
  - Suite L12 1,075 RSF
  - Suite L11 900 RSF
  - Suite 303 1,300 RSF
  - Suite 300 850 RSF
- Fully built-out medical suites with plumbing
- Ample, convenient parking (5.02/1,000)
- Located across from Ascension Saint Joseph Hospital-Joliet
- Synergistic mix of medical tenant specialties including cardiology, dermatology, family medicine, gastroenterology, audiology, internal medicine, ophthalmology, ENT, MRI, lab services.
- Under new ownership

[Property Website](#)

Owned and Managed by:

**welltower**

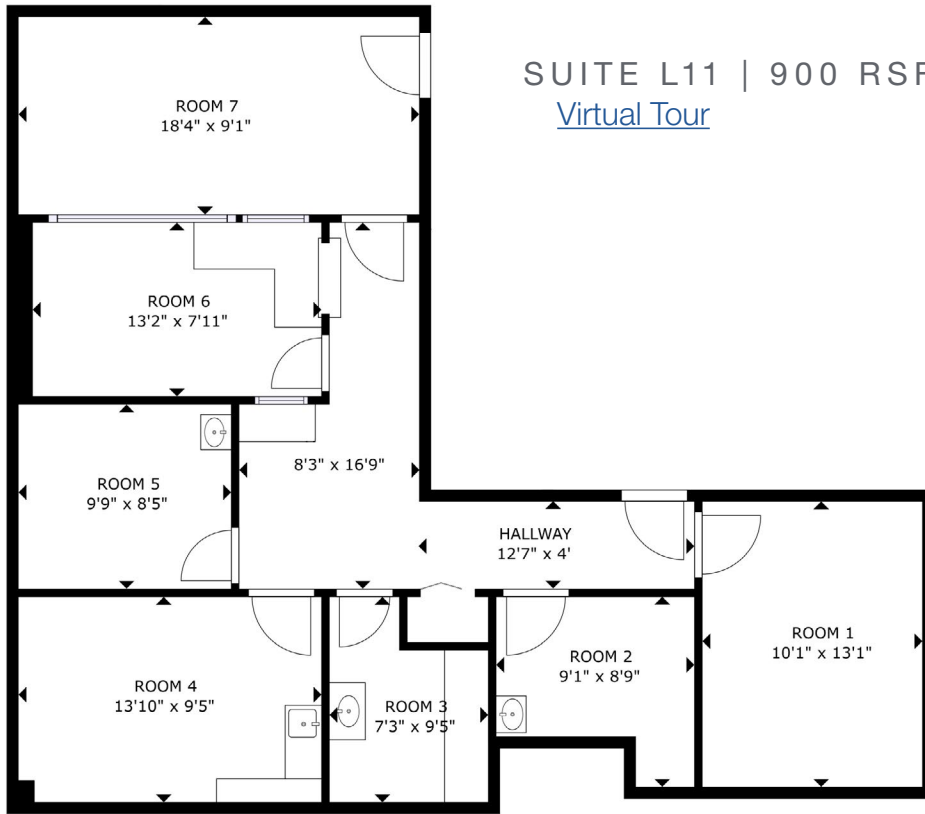
### Contact

Brian Edgerton  
+1 630 693 0671  
[bedgerton@hiffman.com](mailto:bedgerton@hiffman.com)

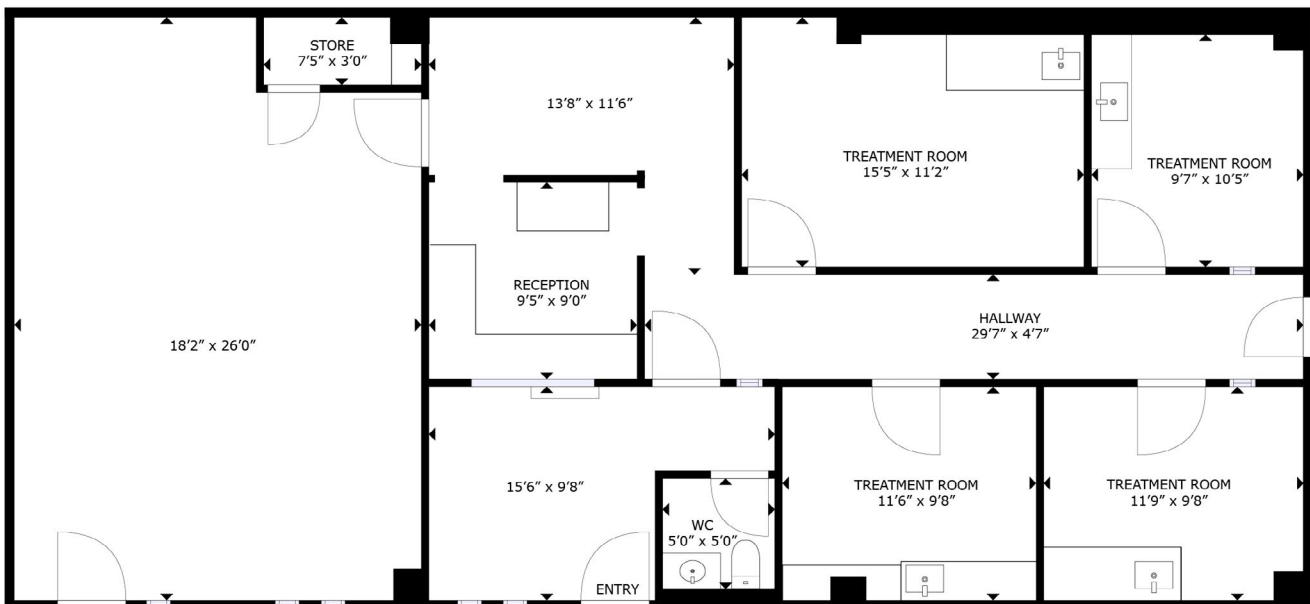
One Oakbrook Terrace  
Suite 600  
Oakbrook Terrace, Illinois 60181  
+1 630 932 1234

NO WARRANTY OR REPRESENTATION, EXPRESS OR IMPLIED, IS MADE AS TO THE ACCURACY OF THE INFORMATION CONTAINED HEREIN, AND THE SAME IS SUBMITTED SUBJECT TO ERRORS, OMISSIONS, CHANGE OF PRICE, RENTAL OR OTHER CONDITIONS, PRIOR SALE, LEASE OR FINANCING, OR WITHDRAWAL WITHOUT NOTICE, AND OF ANY SPECIAL LISTING CONDITIONS IMPOSED BY OUR PRINCIPALS NO WARRANTIES OR REPRESENTATIONS ARE MADE AS TO THE CONDITION OF THE PROPERTY OR ANY HAZARDS CONTAINED THEREIN ARE ANY TO BE IMPLIED.

SUITE L11 | 900 RSF  
[Virtual Tour](#)

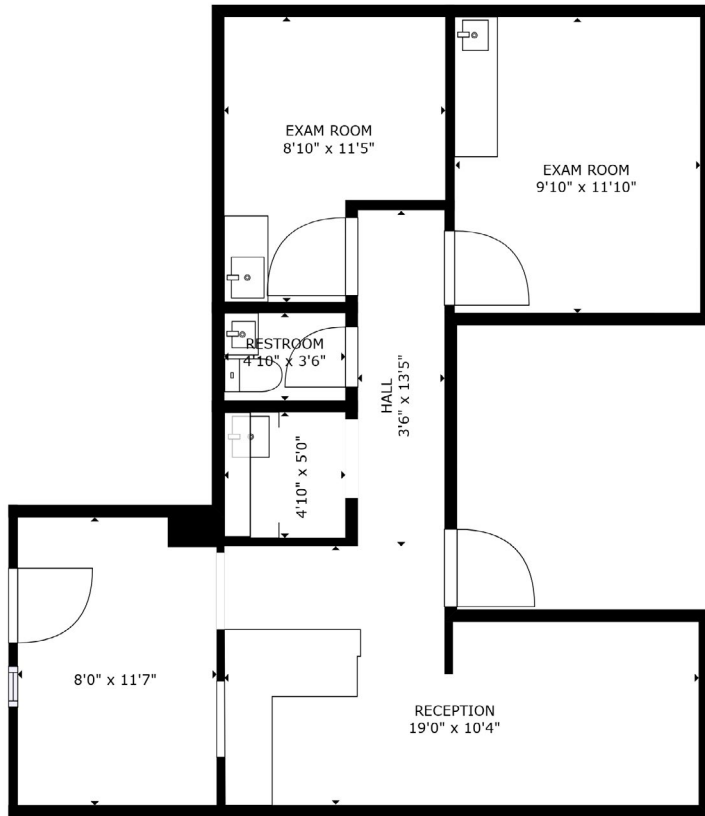


SUITE L12 | 1,075 RSF  
[Virtual Tour](#)



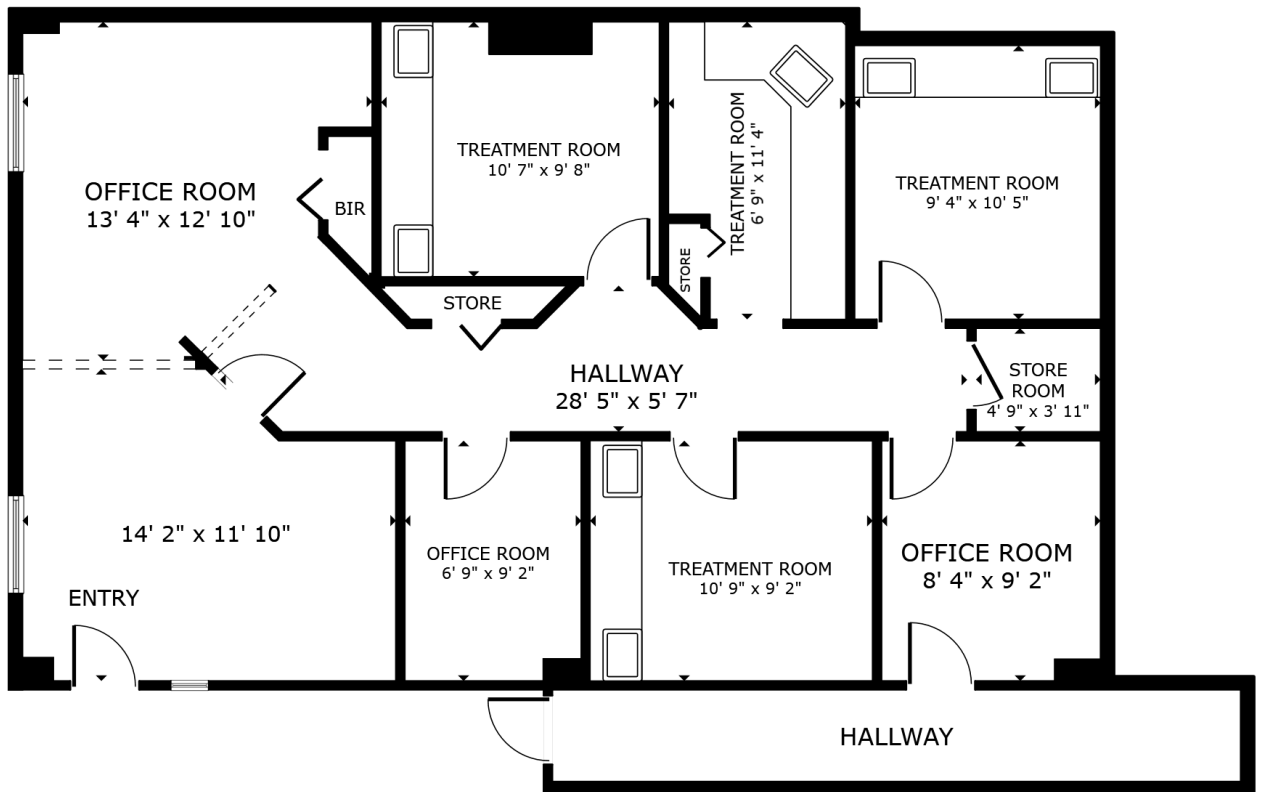
SUITE L15 | 855 RSF

[Virtual Tour](#)



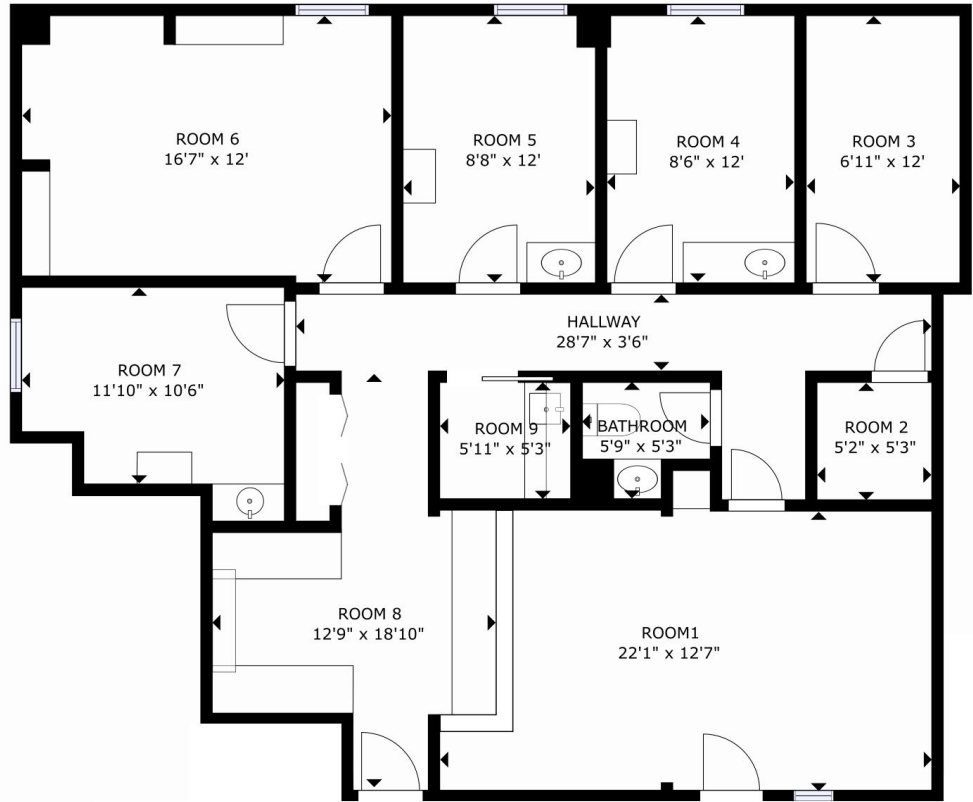
SUITE 300 | 850 RSF

[Virtual Tour](#)



SUITE 303 | 1,300 RSF

[Virtual Tour](#)



One Oakbrook Terrace  
Suite 600  
Oakbrook Terrace, Illinois 60181  
+1 630 932 1234