

BEAIRD TOWER

DOWNTOWN DRIVE-THRU AVAILABLE FOR LEASE

330 MARSHALL STREET | SHREVEPORT, LOUISIANA 71101



- Former drive-in banking facility
- 784 square feet
- Could be converted for multitude of uses
- Southwest corner of Marshall Street and Fannin Street with walk-up window
- Located in central business district
- Convenient to City Hall, parish courthouse, and other office buildings

BOMA

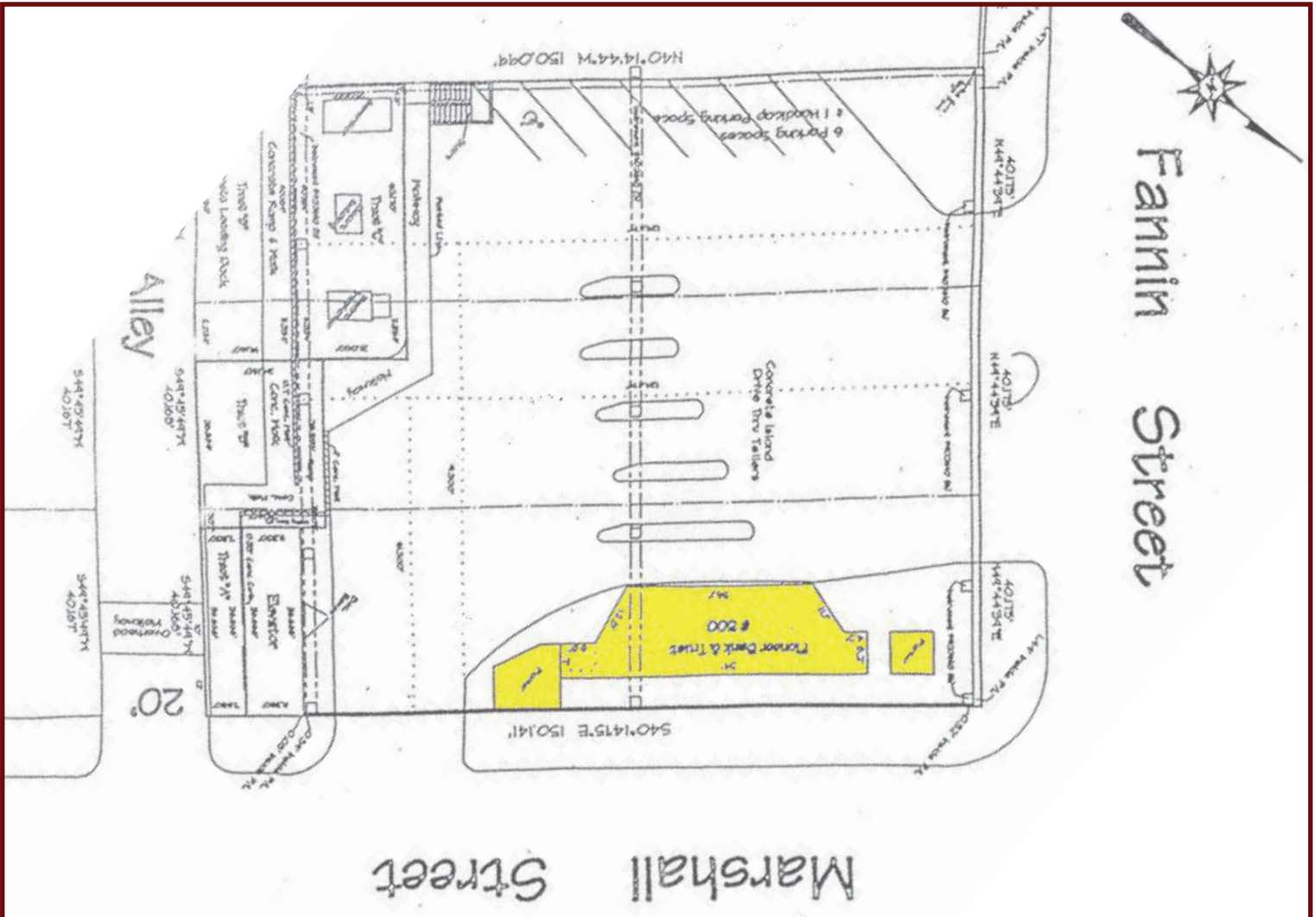


Beaird Tower has been recognized as a BOMA 360 Performance Building which means it has superior operations and service delivery in six key areas: building operations and management, life safety/security/risk management, training and education for building employees, energy efficiency, environmental/sustainability performance, and tenant relations/community involvement.

318-222-2244

www.vintagerealty.com

BEAIRD TOWER



FOR MORE INFORMATION PLEASE CONTACT:

Hilary Bransford | Claire Childs | 318.222.2244

hbransford@vintagerealty.com | cchilds@vintagerealty.com | vintagerealty.com

