

# Westlake Retail & Office Opportunity

14559 SW WESTLAKE DR, LAKE OSWEGO, OR 97035



Westlake Dr

Parkview Dr

5300

Joe Kappler  
503.972.7294  
joek@macadamforbes.com  
Licensed in OR & WA

Kyle Latta  
503.869.2111  
kylel@macadamforbes.com  
Licensed in OR & WA

2 Centerpointe Drive, Suite 500 | Lake Oswego, OR 97035 | [WWW.MACADAMFORBES.COM](http://WWW.MACADAMFORBES.COM) | 503.227.2500

All of the information contained herein was obtained either from the owner or other parties we consider reliable. We have no reason to doubt its accuracy, however we do not guarantee it.

FOR LEASE

 **MACADAM  
FORBES**  
COMMERCIAL REAL ESTATE SERVICES

# FOR LEASE

14559 SW Westlake Dr, Lake Oswego, OR 97035



## PROPERTY DESCRIPTION

This charming property is surrounded by treelined streets in the peaceful and welcoming neighborhood of Westlake. This impressive property features open layouts designed to accommodate a range of commercial/retail needs. With ample parking and seamless accessibility, it's positioned to elevate your business's convenience and appeal. Whether you're launching a new venture or seeking a prominent location for expansion, this property presents an exceptional foundation for your success.

## OFFERING SUMMARY

Lease Rate:	\$24.00 SF/yr (NNN)
Number of Units:	5
Available SF:	1,190 - 1,498 SF
Building Size:	40,000 SF



**Joe Kappler**

503.972.7294  
joek@macadamforbes.com  
Licensed in OR & WA

**Kyle Latta**

503.869.2111  
kylel@macadamforbes.com  
Licensed in OR & WA

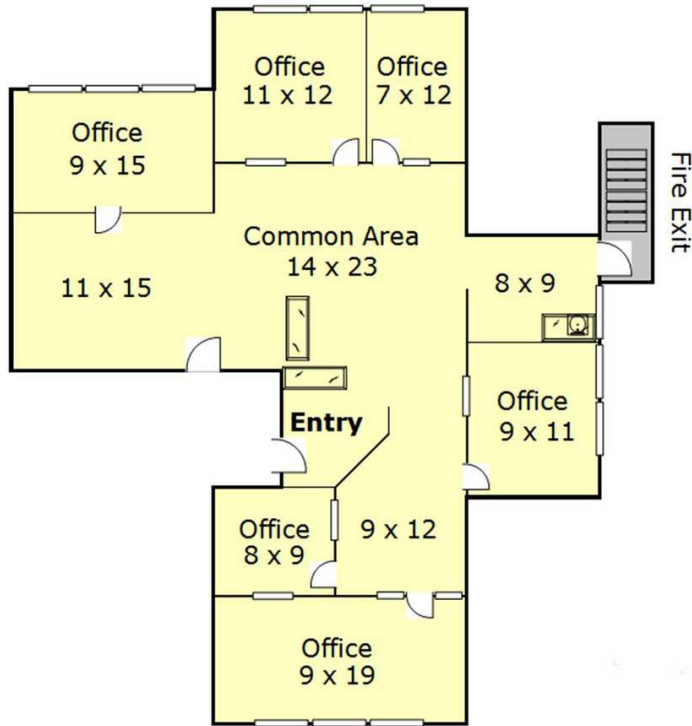
All of the information contained herein was obtained either from the owner or other parties we consider reliable. We have no reason to doubt its accuracy, however we do not guarantee it.

MACADAMFORBES.COM | 503.227.2500

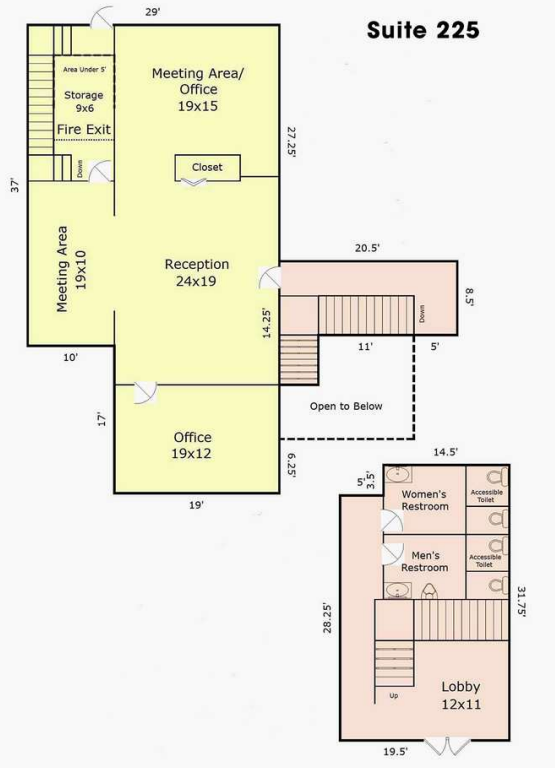
# FOR LEASE

14559 SW Westlake Dr, Lake Oswego, OR 97035

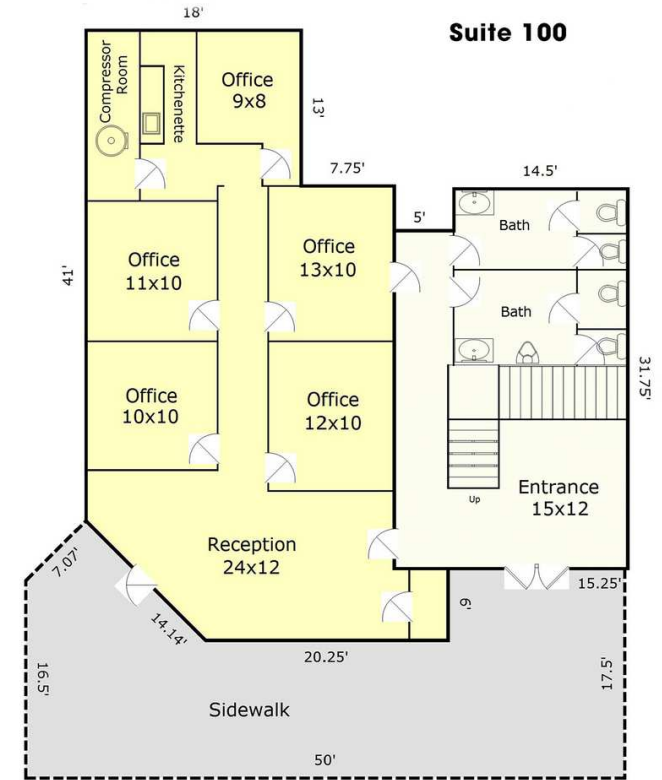
**Suite 250**



**Suite 225**



**Suite 100**



**AVAILABLE SPACES**

SUITE	SIZE (SF)	LEASE TYPE	LEASE RATE
■ 14511 Westlake Drive, Suite 100	1,190 SF	NNN	\$24.00 SF/yr
■ 14511 Westlake Drive, Suite 225	1,354 SF	NNN	\$24.00 SF/yr
■ 14511 Westlake Drive, Suite 250	1,498 SF	NNN	\$24.00 SF/yr

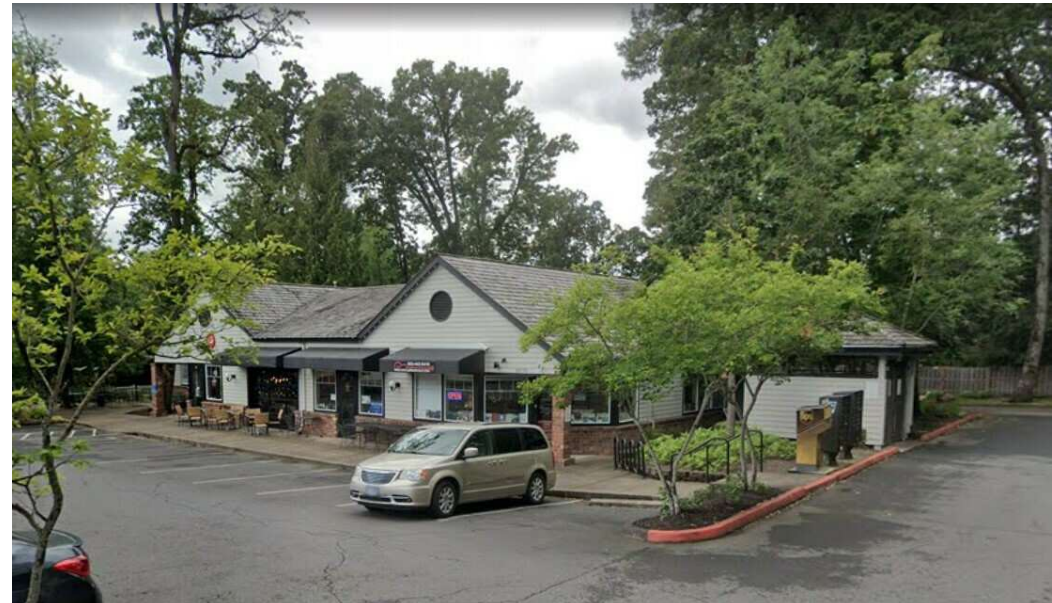


**Joe Kappler**  
 503.972.7294  
 joek@macadamforbes.com  
 Licensed in OR & WA

**Kyle Latta**  
 503.869.2111  
 kylel@macadamforbes.com  
 Licensed in OR & WA

FOR LEASE

14559 SW Westlake Dr, Lake Oswego, OR 97035



**Joe Kappler**  
503.972.7294  
joek@macadamforbes.com  
Licensed in OR & WA

**Kyle Latta**  
503.869.2111  
kylel@macadamforbes.com  
Licensed in OR & WA

All of the information contained herein was obtained either from the owner or other parties we consider reliable. We have no reason to doubt its accuracy, however we do not guarantee it.

MACADAMFORBES.COM | 503.227.2500

# FOR LEASE

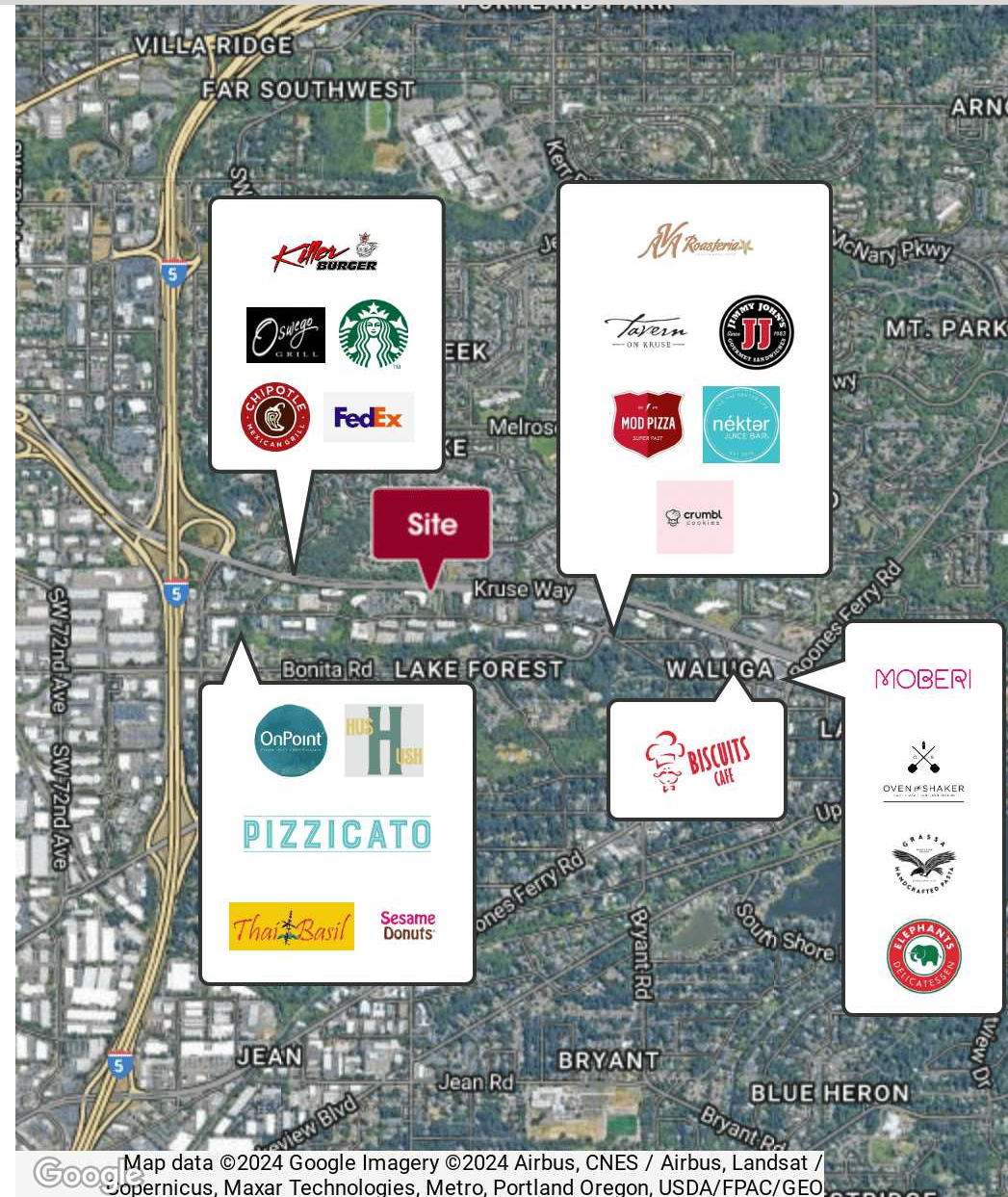
14559 SW Westlake Dr, Lake Oswego, OR 97035

## DEMOGRAPHICS

	0.3 MILES	0.5 MILES	1 MILE
Total population	1,480	3,570	13,763
Median age	38	40	43
Median age (Male)	37	39	41
Median age (Female)	40	41	44
Total households	576	1,436	5,757
Total persons per HH	2.6	2.5	2.4
Average HH income	\$156,872	\$158,268	\$157,851
Average house value	\$994,945	\$961,710	\$879,220

## LOCATION OVERVIEW

Prime retail and office space located in the beautiful Westlake neighborhood of Lake Oswego, OR. Westlake is a lively neighborhood within close proximity to numerous dining, shopping and leisure activities with easy access to I-5, and 217.



**Joe Kappler**

503.972.7294  
joek@macadamforbes.com  
Licensed in OR & WA

**Kyle Latta**

503.869.2111  
kylel@macadamforbes.com  
Licensed in OR & WA