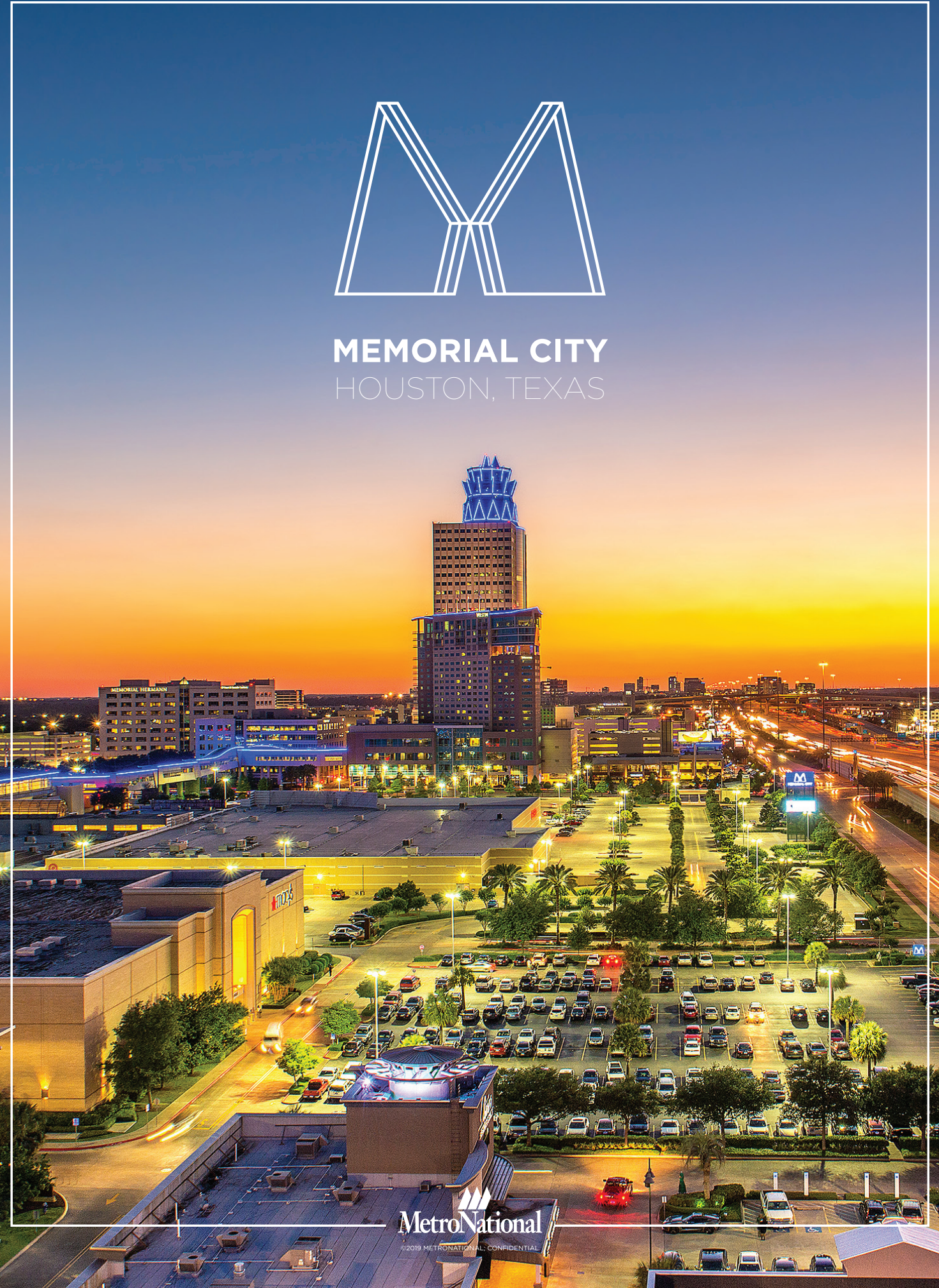


METRONATIONAL
945 BUNKER HILL, SUITE 400
HOUSTON, TEXAS 77024
713.973.6400 MAIN
METRONATIONAL.COM

DANNA DIAMOND
VICE PRESIDENT OF RETAIL LEASING
832.724.3153 MOBILE
713.586.6248 OFFICE
DANNA.DIAMOND@MEMORIALCITYMALL.COM



MEMORIAL CITY
HOUSTON, TEXAS

MEMORIAL CITY - MUCH MORE THAN A MALL

Memorial City is truly a city-within-a-city that's a thriving development nestled in the heart of Houston's most popular and affluent community. You can feel a captivating energy and vitality everywhere you turn: from the hustle and bustle in the stores and chef-inspired restaurants, to the constant flow of meetings and conventions at the hotels, and to the lights burning late into the night in the gleaming headquarters of the many corporations who make Memorial City their home. This is a place to do more, find more, and enjoy more.



MEMORIAL CITY MARKET HIGHLIGHTS

- **\$800** Average Sales Per Square Foot (Memorial City Mall)
- **9 million** square feet of existing mixed-use development
- **Ranked 20th nationally** (Memorial City Mall) in Travel & Leisure's list of America's Most-Visited Shopping Malls in 2017
- **1.6 million** population within a 10 mile radius
- **\$250,000** Median Household Income (Memorial Villages)
- **3.1 million** square feet of Class A office space in Memorial City
- **1.7 million** square foot super regional mall (Memorial City Mall)
- **Highest-Grossing** Macy's in Texas
- **Located at the center** of west Houston's thriving economy
- **Easy access** to Interstate 10 and Beltway 8

DAYTIME POPULATION

- **1 mile:** 81,105
- **5 miles:** 493,547
- **10 miles:** 1,620,146

TOTAL POPULATION

- **1 mile:** 14,596
- **5 miles:** 411,229
- **10 miles:** 1,600,816

TOTAL HOUSEHOLDS

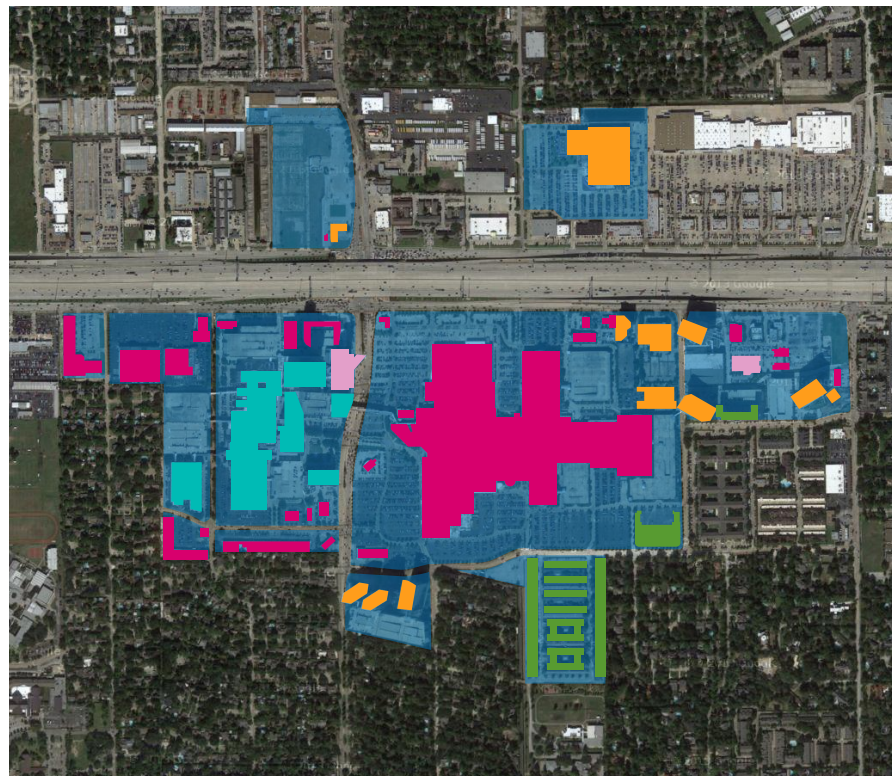
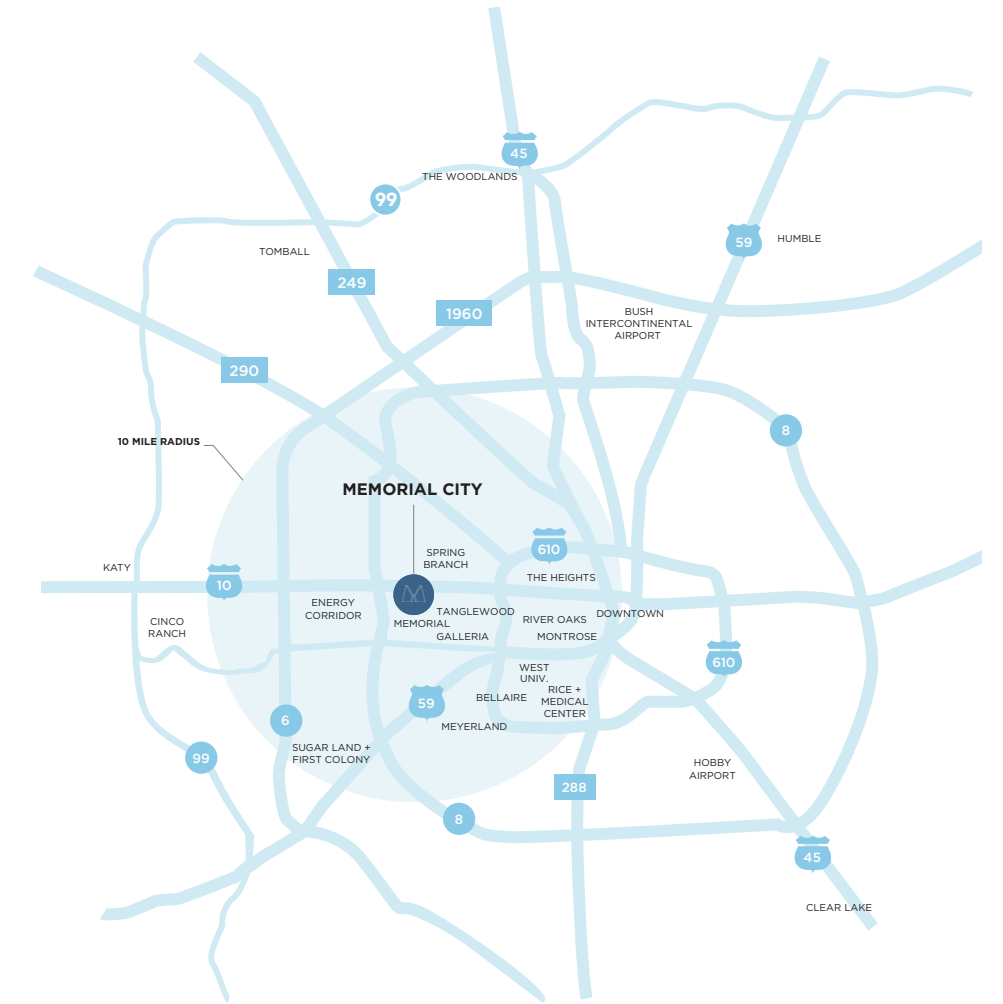
- **1 mile:** 5,706
- **5 miles:** 173,434
- **10 miles:** 641,316

AVERAGE HOUSEHOLD INCOME

- **1 mile:** \$128,634
- **5 miles:** \$109,324
- **10 miles:** \$103,921

10 MILE RADIUS

Conveniently situated along the expansive Interstate 10 freeway - one mile east of Beltway 8 - Memorial City is located at the center of west Houston's thriving economy.



MEMORIAL CITY CURRENT FOOTPRINT

- OFFICE**
3.1 MILLION SF
- RETAIL**
2.1 MILLION SF
- HOSPITALITY**
470,000 SF
- MULTI-FAMILY**
950,000 SF
- MEDICAL**
2.3 MILLION SF

9 MILLION
GRAND TOTAL SF

