



**Specifications**

±1.42 AC  
TOTAL ACREAGE

±1,500 SF  
OFFICE TRAILER

Industrial (I-2)  
ZONING

Fenced In Parking  
Lot Concrete/Milled  
Two Points of Gated Access  
COMMENTS

3 Miles to Port Newark  
4 Miles to Newark Airport  
2 Miles to NJ Turnpike, Interchange 14  
ACCESSIBILITY

For additional property information or to arrange an inspection, please contact the exclusive brokers:

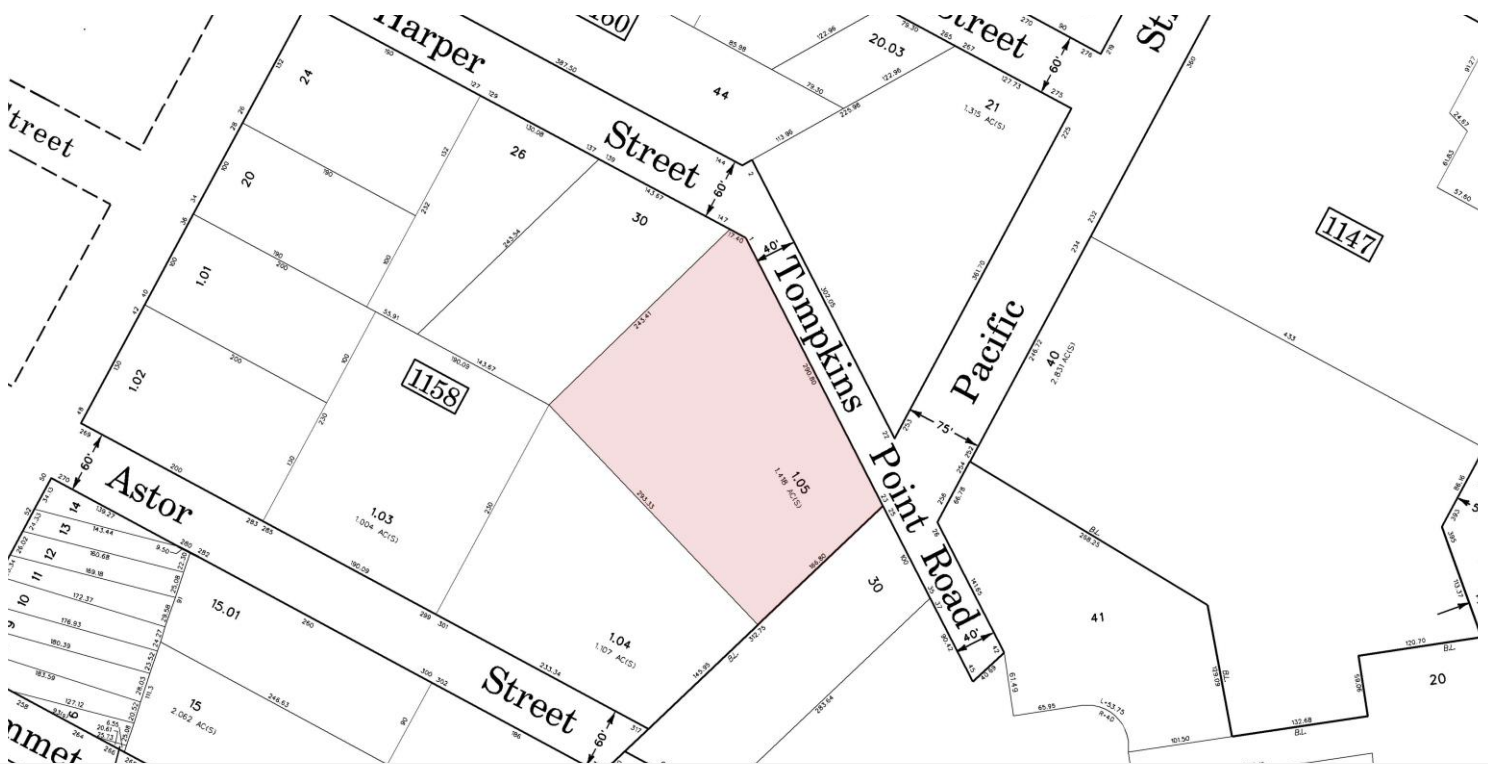
Jason M. Crimmins, CCIM, SIOR  
*President*  
973.379.6644 x 122  
jmcrimmins@blauberg.com

Alessandro (Alex) Conte, CCIM, SIOR  
*Executive Vice President*  
973.379.6644 x 131  
aconte@blauberg.com

Peter J. Murano, Jr., SIOR  
*Managing Executive Director*  
973.379.6644 x 114  
pjmurano@blauberg.com

Laura L. Crimmins, SIOR  
*Executive Director*  
973.379.6644 x 142  
lcrimmins@blauberg.com

**FOR LEASE | 1-23 TOMPKINS POINT ROAD | NEWARK, NJ**



For additional property information or to arrange an inspection, please contact the exclusive brokers:

Jason M. Crimmins, CCIM, SIOR  
*President*  
 973.379.6644 x 122  
 jmcrimmins@blauberg.com

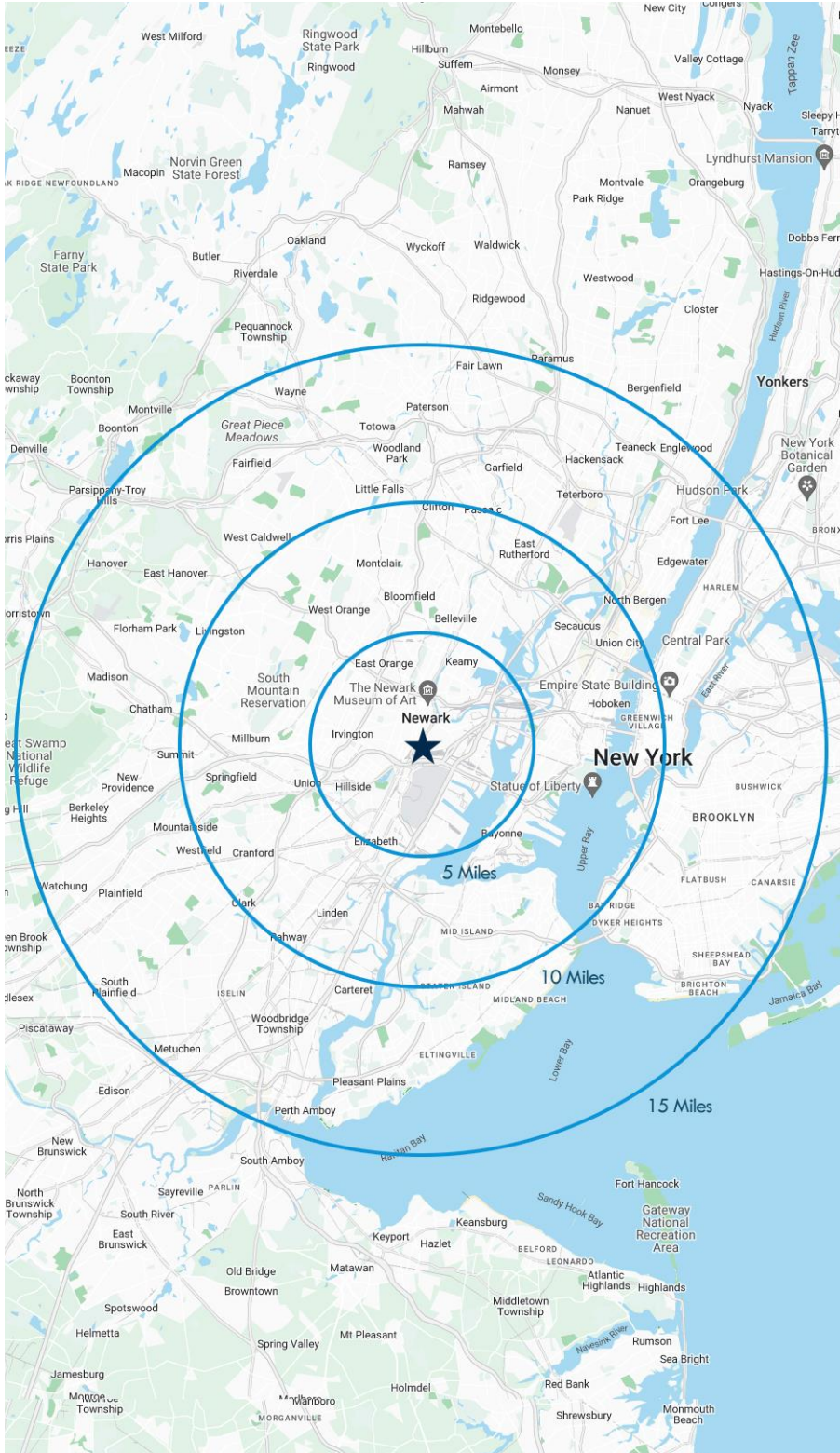
Alessandro (Alex) Conte, CCIM, SIOR  
*Executive Vice President*  
 973.379.6644 x 131  
 acont@blauberg.com

Peter J. Murano, Jr., SIOR  
*Managing Executive Director*  
 973.379.6644 x 114  
 pjmurano@blauberg.com

Laura L. Crimmins, SIOR  
*Executive Director*  
 973.379.6644 x 142  
 lcrimmins@blauberg.com

The information contained herein has been obtained from sources considered to be reliable, but no guarantee of its accuracy is made by this company. In addition, no representation is made respecting zoning, condition of title, dimensions, or any matters of a legal or environmental nature. Such matters should be referred to legal counsel for determination. Terms and conditions are subject to change without prior notice. Subject to errors and omissions.





**5 MILES**

- Total Population: 869,683
- Households: 320,985
- Median Household Income: \$68,706
- Average Household Size: 2.6
- Transportation to Work: 417,755
- Labor Force: 690,545

**10 MILES**

- Total Population: 3.01M
- Households: 1.22M
- Median Household Income: \$107,778
- Average Household Size: 2.4
- Transportation to Work: 1.57M
- Labor Force: 2.47M

**15 MILES**

- Total Population: 8.11M
- Households: 3.27M
- Median Household Income: \$103,292
- Average Household Size: 2.4
- Transportation to Work: 4.17M
- Labor Force: 6.65M

For additional property information or to arrange an inspection, please contact the exclusive brokers:

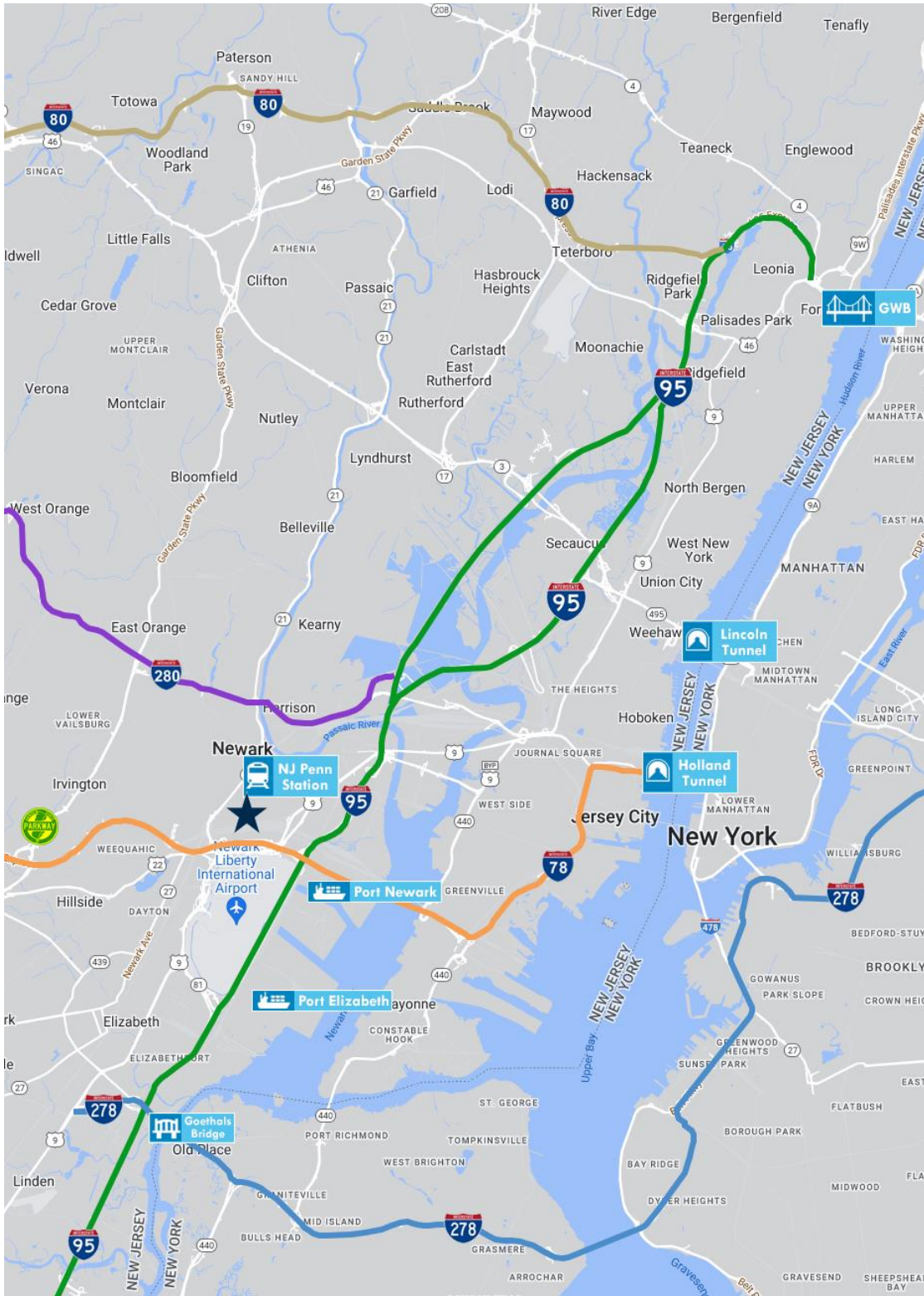
Jason M. Crimmins, CCIM, SIOR  
*President*  
 973.379.6644 x 122  
 jmcrimmins@blauberg.com

Alessandro (Alex) Conte, CCIM, SIOR  
*Executive Vice President*  
 973.379.6644 x 131  
 acont@blauberg.com

Peter J. Murano, Jr., SIOR  
*Managing Executive Director*  
 973.379.6644 x 114  
 pjmurano@blauberg.com

Laura L. Crimmins, SIOR  
*Executive Director*  
 973.379.6644 x 142  
 lcrimmins@blauberg.com

The information contained herein has been obtained from sources considered to be reliable, but no guarantee of its accuracy is made by this company. In addition, no representation is made respecting zoning, condition of title, dimensions, or any matters of a legal or environmental nature. Such matters should be referred to legal counsel for determination. Terms and conditions are subject to change without prior notice. Subject to errors and omissions.



**ACCESSIBILITY**

**IMMEDIATE ACCESS**  
Port Newark / Elizabeth

0.7 MI  
US Highway 1 & 9

1.3 MI  
Interstate-78

1.6 MI  
Newark Penn Station

3 MI  
Ports Newark / Elizabeth

4 MI  
Newark Airport

2 MI  
I-95, Exit 14

5.4 MI  
GSP, Exit 142B

8.8 MI  
Holland Tunnel

13.6 MI  
Lincoln Tunnel

18.2 MI  
G.W. Bridge

For additional property information or to arrange an inspection, please contact the exclusive brokers:

Jason M. Crimmins, CCIM, SIOR  
*President*  
973.379.6644 x 122  
jmcrimmins@blauberg.com

Alessandro (Alex) Conte, CCIM, SIOR  
*Executive Vice President*  
973.379.6644 x 131  
aconte@blauberg.com

Peter J. Murano, Jr., SIOR  
*Managing Executive Director*  
973.379.6644 x 114  
pjmurano@blauberg.com

Laura L. Crimmins, SIOR  
*Executive Director*  
973.379.6644 x 142  
lcrimmins@blauberg.com

The information contained herein has been obtained from sources considered to be reliable, but no guarantee of its accuracy is made by this company. In addition, no representation is made respecting zoning, condition of title, dimensions, or any matters of a legal or environmental nature. Such matters should be referred to legal counsel for determination. Terms and conditions are subject to change without prior notice. Subject to errors and omissions.