

OFFICE FOR LEASE WATERS EDGE OFFICE PARK

4915 & 4917 Waters Edge Drive, Raleigh, NC 27606



COMMERCIAL REAL ESTATE SERVICES
RALEIGH • DURHAM • WILMINGTON



PROPERTY DESCRIPTION

Office space for lease in Waters Edge Office Park in Raleigh, located at the Jones Franklin Road intersection with I-440. The property has easy access to I-40 and is close to numerous amenities, including Cary Crossroads.

PROPERTY HIGHLIGHTS

- Move-in-ready second-generation office suites available
- Interior and exterior renovations in progress
- Ample 4.5/1000 parking
- Full service lease rate
- Building 4917, Suites 165 & 185: can be combined for up to 8,198 RSF

SPACES

SPACES	LEASE RATE	SPACE SIZE
Building 4915 - Suite 140	\$967 per month	580 SF
Building 4915 - Suite 185	\$1,828 per month	1,083 SF
Building 4917 - Suite 165	\$10,848 per month	6,510 SF
Building 4917 - Suite 185	\$2,814 per month	1,688 SF
Building 4917 - Suite 221	\$2,105 per month	1,263 SF
Building 4917 - Suite 275	\$5,514 per month	3,308 SF

VIRTUAL TOURS

Suite 165: <https://my.matterport.com/show/?m=8JeC8mnfj7n>

Suite 185: <https://my.matterport.com/show/?m=htUW8zqzVsQ>

Moss Withers
mwithers@lee-associates.com
O: 919.576.2501
C: 919.576.2501

Karah Jennings McConnell
kjennings@lee-associates.com
O: 919.576.2502
C: 919.817.0705

All information furnished regarding property for sale, rental or financing is from sources deemed reliable, but no warranty or representation is made to the accuracy thereof and same is submitted to errors, omissions, change of price, rental or other conditions prior to sale, lease or financing or withdrawal without notice.
No liability of any kind is to be imposed on the broker herein.

OFFICE FOR LEASE WATERS EDGE OFFICE PARK

4915 & 4917 Waters Edge Drive, Raleigh, NC 27606



COMMERCIAL REAL ESTATE SERVICES
RALEIGH • DURHAM • WILMINGTON



Moss Withers
mwithers@lee-associates.com
O: 919.576.2501
C: 919.576.2501

Karah Jennings McConnell
kjennings@lee-associates.com
O: 919.576.2502
C: 919.817.0705

All information furnished regarding property for sale, rental or financing is from sources deemed reliable, but no warranty or representation is made to the accuracy thereof and same is submitted to errors, omissions, change of price, rental or other conditions prior to sale, lease or financing or withdrawal without notice.
No liability of any kind is to be imposed on the broker herein.

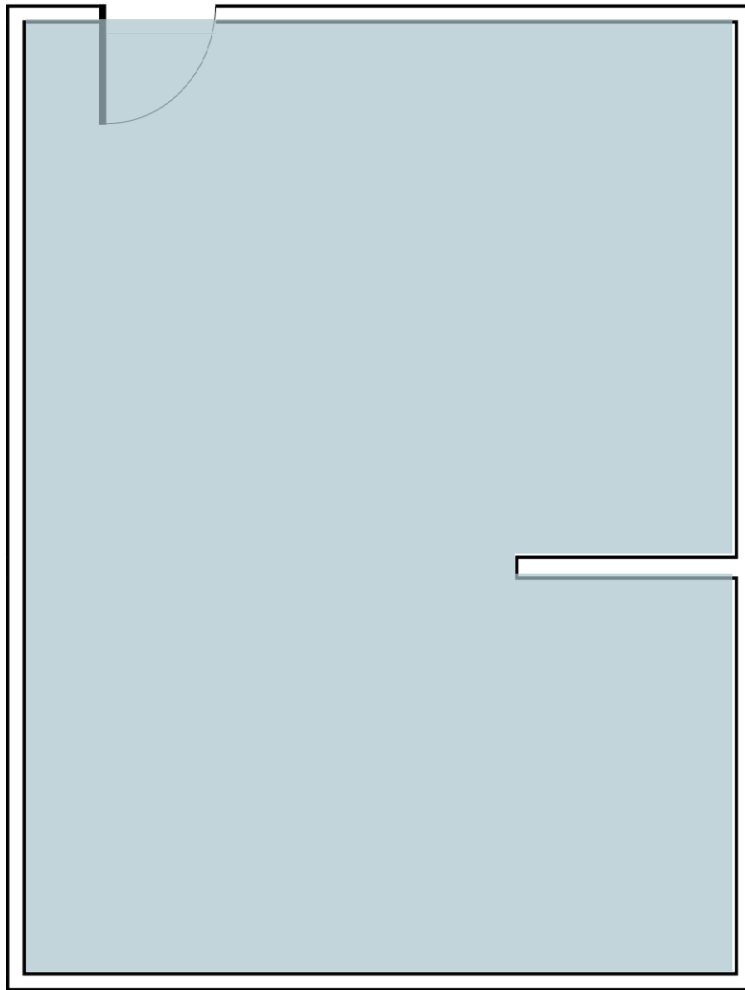
OFFICE FOR LEASE
WATERS EDGE OFFICE PARK

4915 & 4917 Waters Edge Drive, Raleigh, NC 27606



COMMERCIAL REAL ESTATE SERVICES
RALEIGH • DURHAM • WILMINGTON

SUITE 140
580 RSF



Moss Withers
mwithers@lee-associates.com
O: 919.576.2501
C: 919.576.2501

Karah Jennings McConnell
kjennings@lee-associates.com
O: 919.576.2502
C: 919.817.0705

All information furnished regarding property for sale, rental or financing is from sources deemed reliable, but no warranty or representation is made to the accuracy thereof and same is submitted to errors, omissions, change of price, rental or other conditions prior to sale, lease or financing or withdrawal without notice.
No liability of any kind is to be imposed on the broker herein.

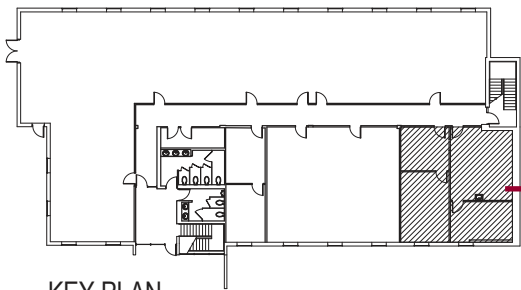
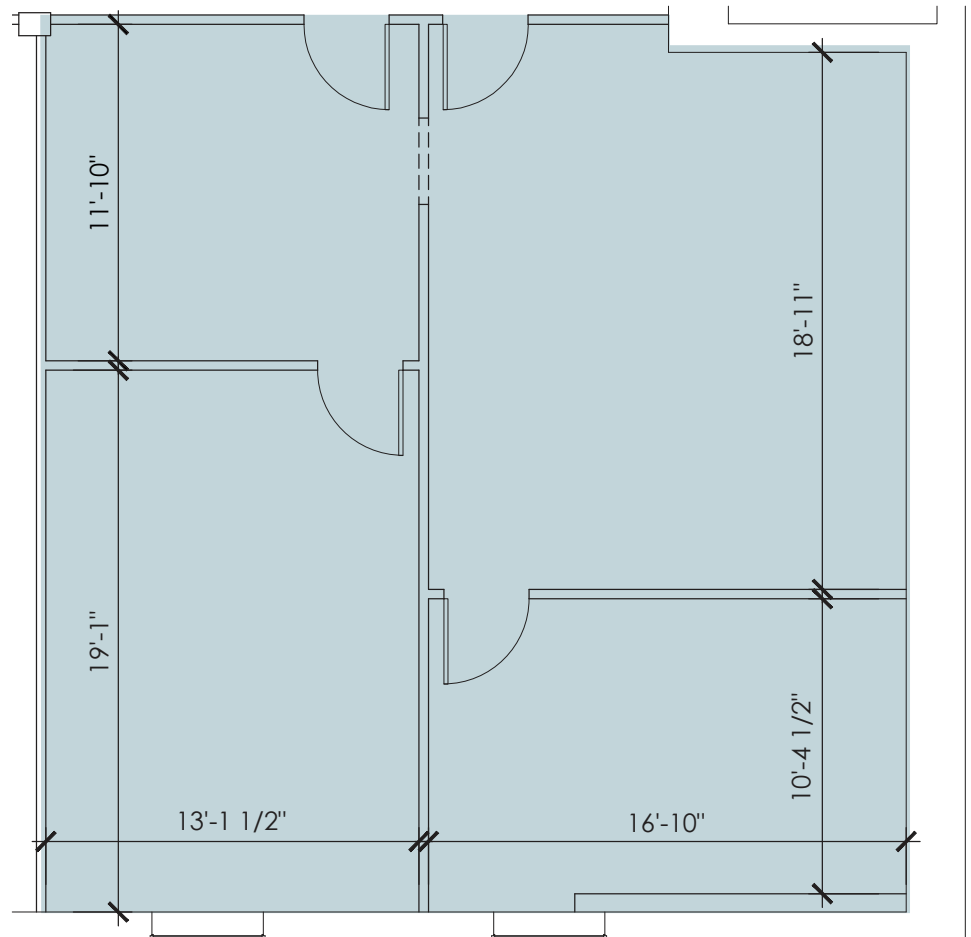
OFFICE FOR LEASE WATERS EDGE OFFICE PARK

4915 & 4917 Waters Edge Drive, Raleigh, NC 27606



COMMERCIAL REAL ESTATE SERVICES
RALEIGH • DURHAM • WILMINGTON

SUITE 185
1,083 RSF



KEY PLAN

BUILDING 4915
SUITE 185

Moss Withers
mwithers@lee-associates.com
O: 919.576.2501
C: 919.576.2501

Karah Jennings McConnell
kjennings@lee-associates.com
O: 919.576.2502
C: 919.817.0705

All information furnished regarding property for sale, rental or financing is from sources deemed reliable, but no warranty or representation is made to the accuracy thereof and same is submitted to errors, omissions, change of price, rental or other conditions prior to sale, lease or financing or withdrawal without notice.
No liability of any kind is to be imposed on the broker herein.

OFFICE FOR LEASE WATERS EDGE OFFICE PARK

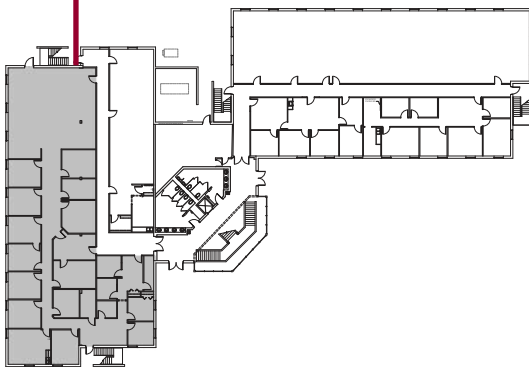
4915 & 4917 Waters Edge Drive, Raleigh, NC 27606



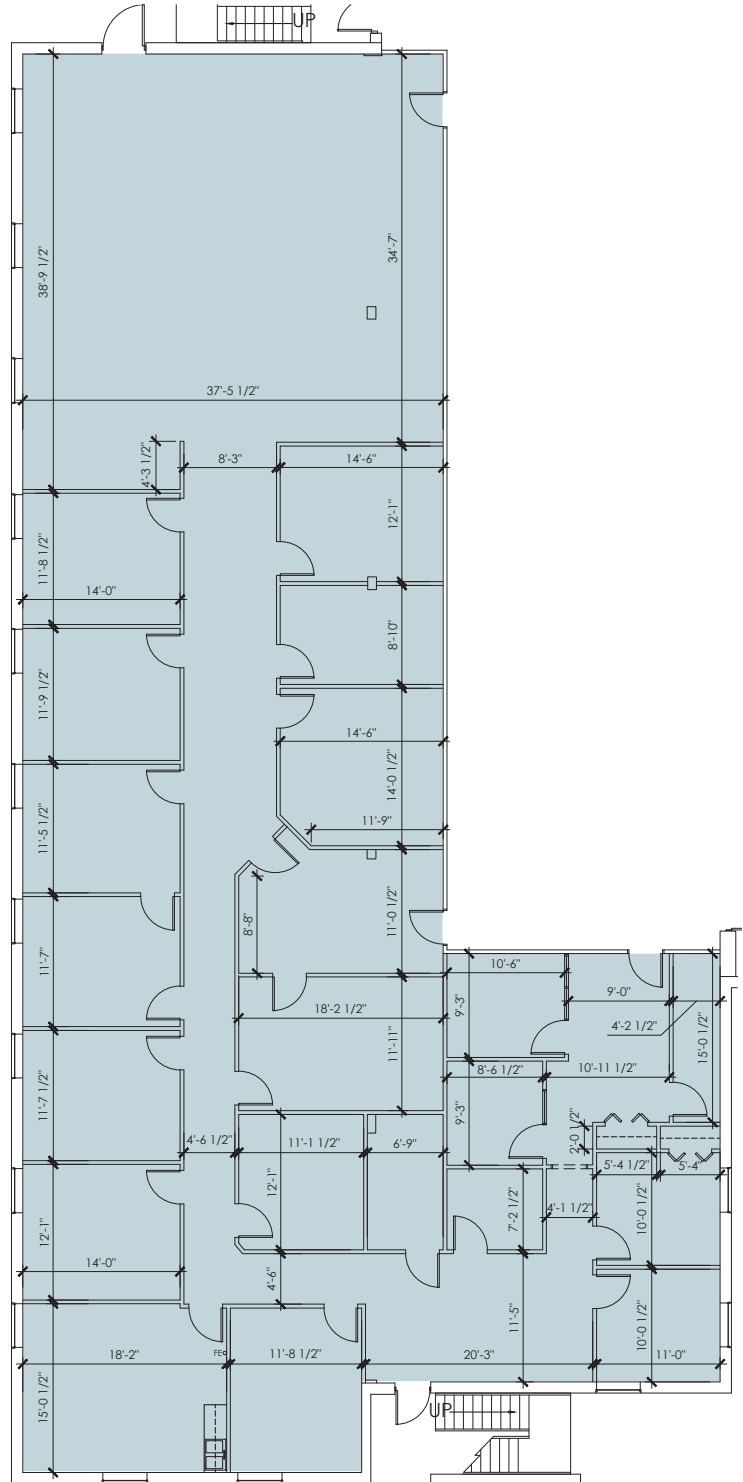
COMMERCIAL REAL ESTATE SERVICES
RALEIGH • DURHAM • WILMINGTON

SUITE 165
6,510 RSF

BUILDING 4917
SUITE 165



KEY PLAN



Moss Withers
mwithers@lee-associates.com
O: 919.576.2501
C: 919.576.2501

Karah Jennings McConnell
kjennings@lee-associates.com
O: 919.576.2502
C: 919.817.0705

All information furnished regarding property for sale, rental or financing is from sources deemed reliable, but no warranty or representation is made to the accuracy thereof and same is submitted to errors, omissions, change of price, rental or other conditions prior to sale, lease or financing or withdrawal without notice.
No liability of any kind is to be imposed on the broker herein.

OFFICE FOR LEASE WATERS EDGE OFFICE PARK

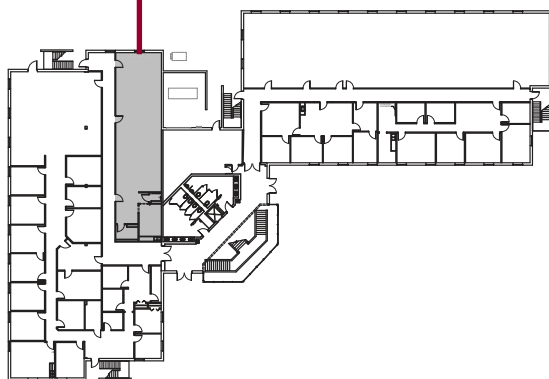
4915 & 4917 Waters Edge Drive, Raleigh, NC 27606



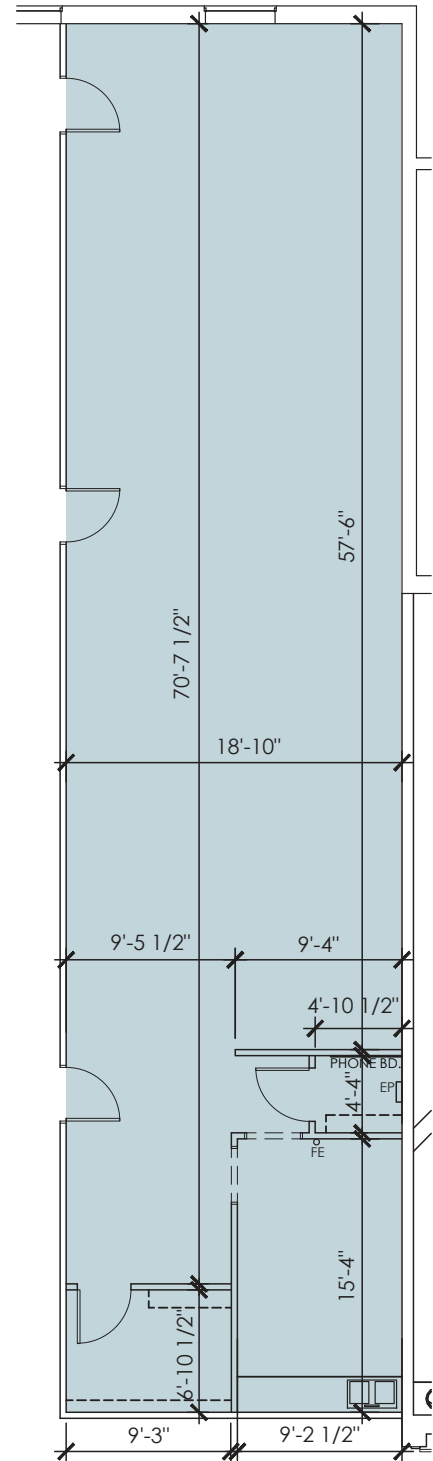
COMMERCIAL REAL ESTATE SERVICES
RALEIGH • DURHAM • WILMINGTON

SUITE 185
1,688 RSF

BUILDING 4917
SUITE 185



KEY PLAN



Moss Withers
mwithers@lee-associates.com
O: 919.576.2501
C: 919.576.2501

Karah Jennings McConnell
kjennings@lee-associates.com
O: 919.576.2502
C: 919.817.0705

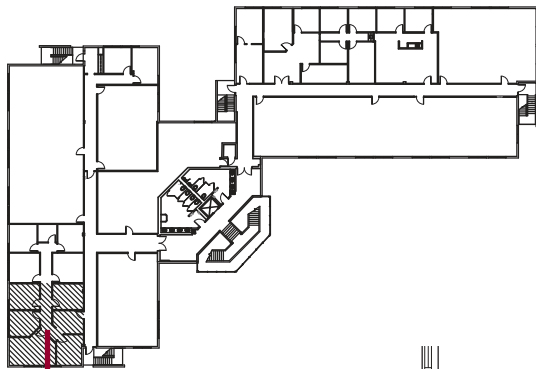
All information furnished regarding property for sale, rental or financing is from sources deemed reliable, but no warranty or representation is made to the accuracy thereof and same is submitted to errors, omissions, change of price, rental or other conditions prior to sale, lease or financing or withdrawal without notice.
No liability of any kind is to be imposed on the broker herein.

OFFICE FOR LEASE WATERS EDGE OFFICE PARK

4915 & 4917 Waters Edge Drive, Raleigh, NC 27606

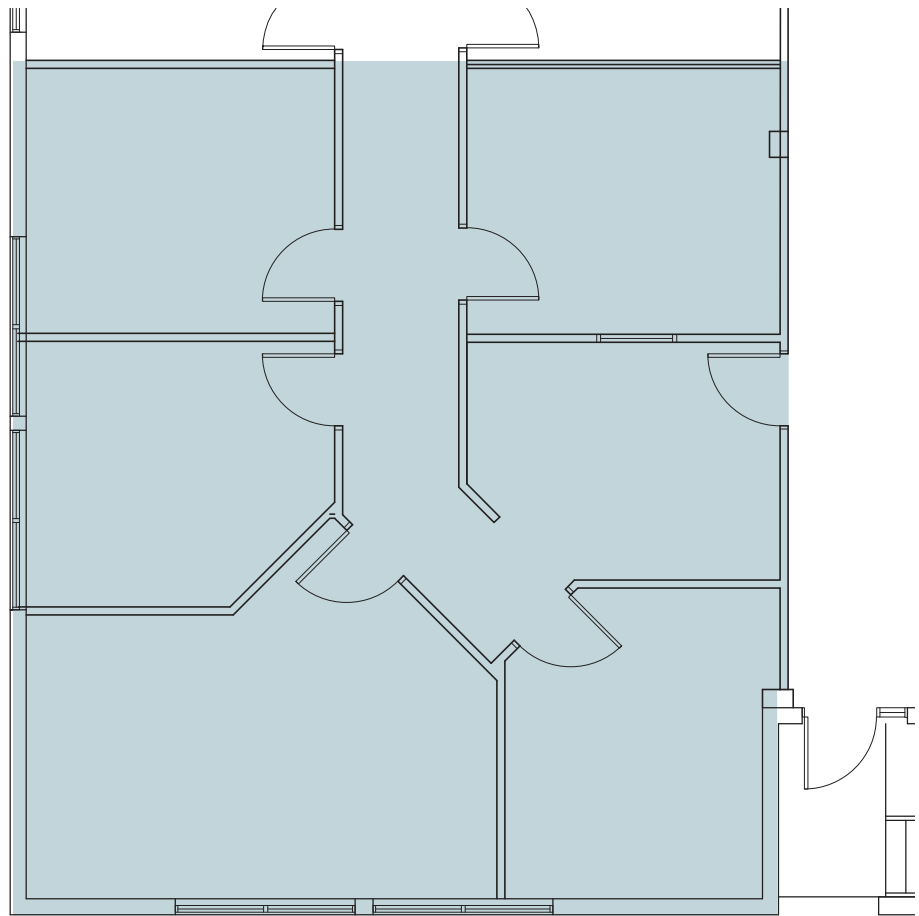


COMMERCIAL REAL ESTATE SERVICES
RALEIGH • DURHAM • WILMINGTON



**BUILDING 4917
SUITE 221**

**SUITE 221
1,263 RSF**



Moss Withers
mwithers@lee-associates.com
O: 919.576.2501
C: 919.576.2501

Karah Jennings McConnell
kjennings@lee-associates.com
O: 919.576.2502
C: 919.817.0705

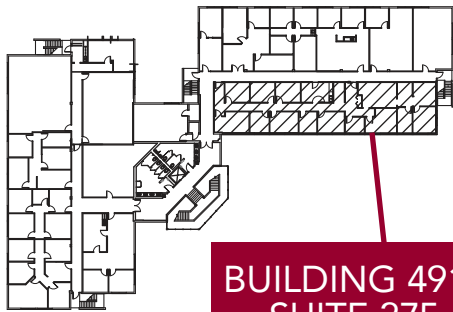
All information furnished regarding property for sale, rental or financing is from sources deemed reliable, but no warranty or representation is made to the accuracy thereof and same is submitted to errors, omissions, change of price, rental or other conditions prior to sale, lease or financing or withdrawal without notice.
No liability of any kind is to be imposed on the broker herein.

OFFICE FOR LEASE WATERS EDGE OFFICE PARK

4915 & 4917 Waters Edge Drive, Raleigh, NC 27606

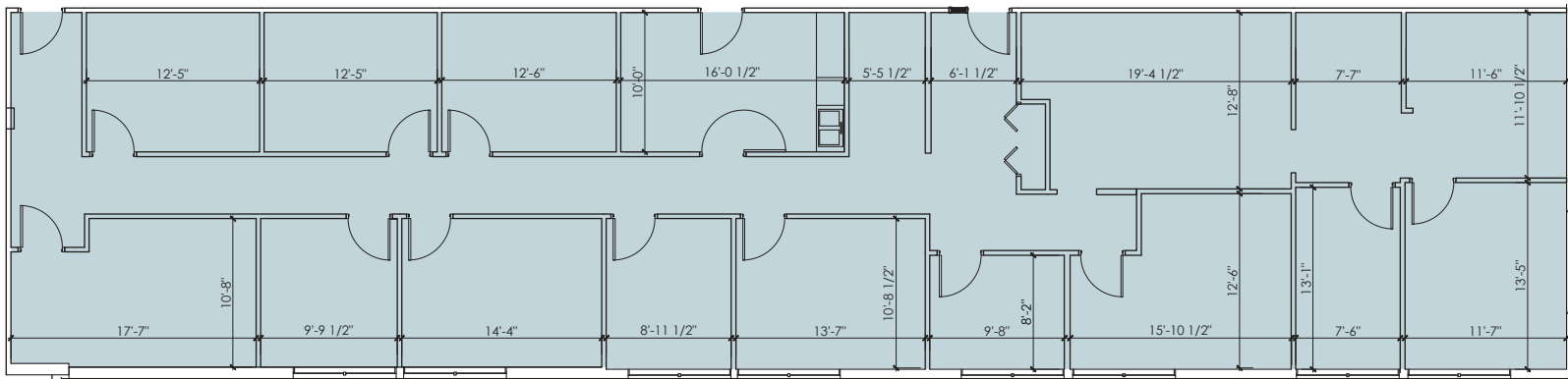


COMMERCIAL REAL ESTATE SERVICES
RALEIGH • DURHAM • WILMINGTON



BUILDING 4917
SUITE 275

SUITE 275
3,308 RSF



Moss Withers
mwithers@lee-associates.com
O: 919.576.2501
C: 919.576.2501

Karah Jennings McConnell
kjennings@lee-associates.com
O: 919.576.2502
C: 919.817.0705

All information furnished regarding property for sale, rental or financing is from sources deemed reliable, but no warranty or representation is made to the accuracy thereof and same is submitted to errors, omissions, change of price, rental or other conditions prior to sale, lease or financing or withdrawal without notice.
No liability of any kind is to be imposed on the broker herein.

OFFICE FOR LEASE WATERS EDGE OFFICE PARK

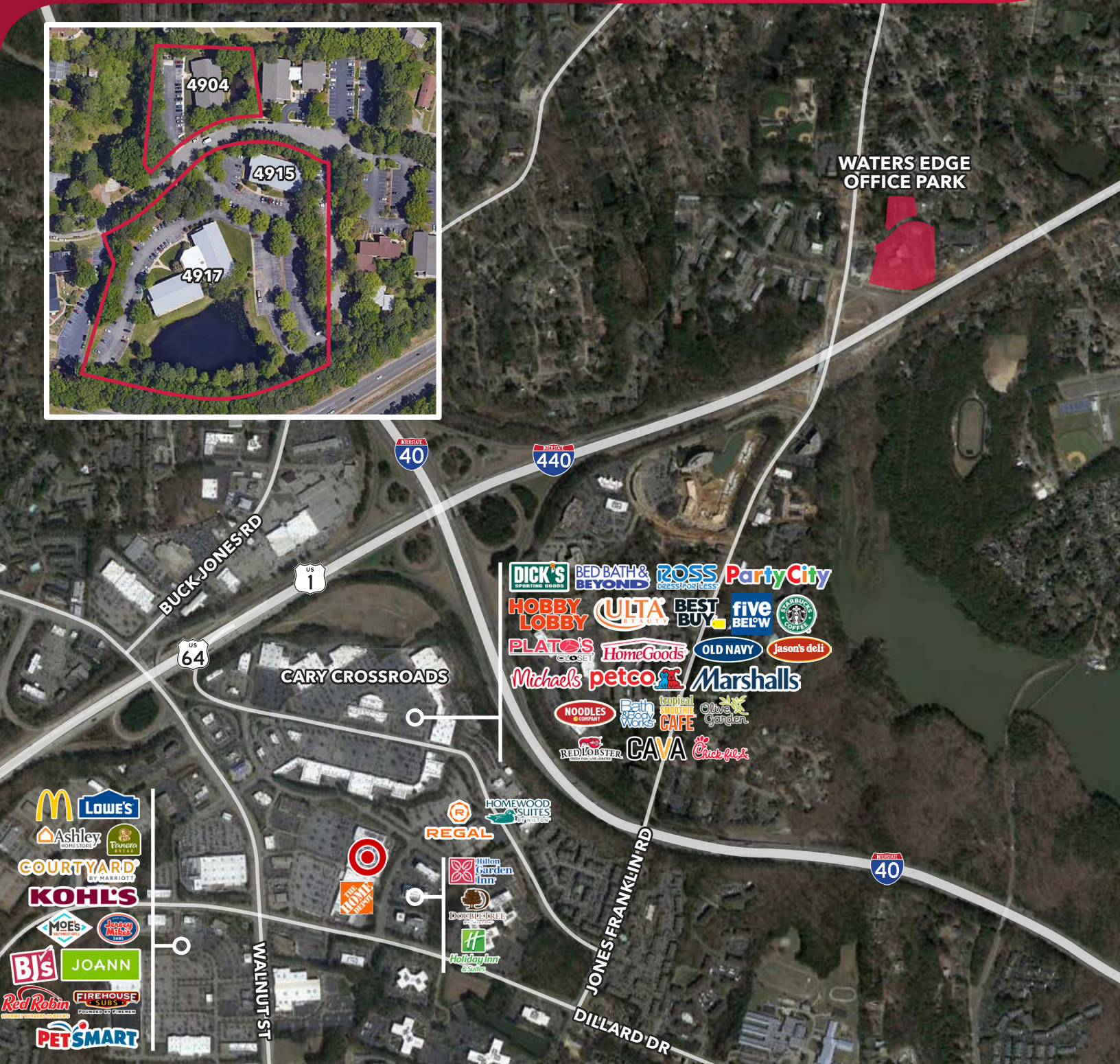
4915 & 4917 Waters Edge Drive, Raleigh, NC 27606



COMMERCIAL REAL ESTATE SERVICES
RALEIGH • DURHAM • WILMINGTON



WATERS EDGE
OFFICE PARK



Moss Withers
mwithers@lee-associates.com
O: 919.576.2501
C: 919.576.2501

Karah Jennings McConnell
kjennings@lee-associates.com
O: 919.576.2502
C: 919.817.0705

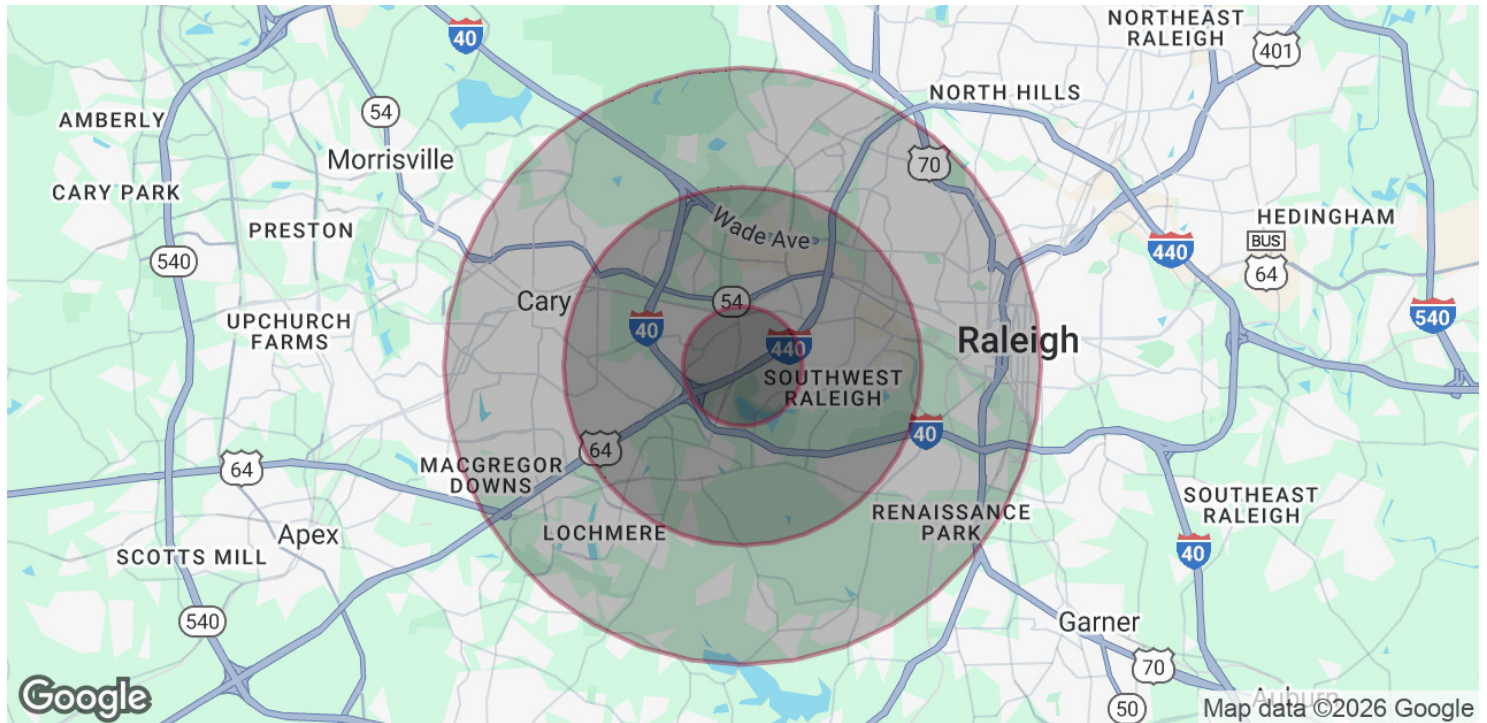
All information furnished regarding property for sale, rental or financing is from sources deemed reliable, but no warranty or representation is made to the accuracy thereof and same is submitted to errors, omissions, change of price, rental or other conditions prior to sale, lease or financing or withdrawal without notice.
No liability of any kind is to be imposed on the broker herein.

OFFICE FOR LEASE WATERS EDGE OFFICE PARK

4915 & 4917 Waters Edge Drive, Raleigh, NC 27606



COMMERCIAL REAL ESTATE SERVICES
RALEIGH • DURHAM • WILMINGTON



POPULATION

	1 MILE	3 MILES	5 MILES
Total Population	9,474	80,419	194,573
Average age	33.8	30.4	35.1
Average age (Male)	34.2	30.0	34.4
Average age (Female)	32.2	30.4	35.4

HOUSEHOLDS & INCOME

	1 MILE	3 MILES	5 MILES
Total households	4,593	32,313	85,370
# of persons per HH	2.1	2.5	2.3
Average HH income	\$76,577	\$73,196	\$97,483
Average house value	\$206,159	\$211,233	\$325,391

* Demographic data derived from 2020 ACS - US Census

Moss Withers
mwithers@lee-associates.com
O: 919.576.2501
C: 919.576.2501

Karah Jennings McConnell
kjennings@lee-associates.com
O: 919.576.2502
C: 919.817.0705

All information furnished regarding property for sale, rental or financing is from sources deemed reliable, but no warranty or representation is made to the accuracy thereof and same is submitted to errors, omissions, change of price, rental or other conditions prior to sale, lease or financing or withdrawal without notice.
No liability of any kind is to be imposed on the broker herein.