



# RETAIL SPACE

FOR LEASE | \$17 PSF | NNN (\$5)

515 9th St - Ste B, Benton City, WA 99320 | MLS 287966

515 9th St - Ste B, Benton City, WA 99320



We obtained the information above from sources we believe to be reliable. However, we have not verified its accuracy and make no guarantee, warranty or representation about it. It is submitted subject to the possibility of errors, omissions, change of price, rental or other conditions, prior sale, lease or financing, or withdrawal without notice. We include projections, opinions, assumptions or estimates for example only, and they may not represent current or future performance of the property. You and your tax and legal advisors should conduct your own investigation of the property and transaction.

89 Gage Blvd  
Richland, WA 99352  
509 943 5200 tel  
[naitri-cities.com](http://naitri-cities.com)



1,228 SF | Retail



## 515 9th St - Ste B

Benton City, Washington 99320

### Property Overview

MLS 287966 - Now available: an updated retail space in the heart of downtown Benton City, ideally situated on 9th Street with a high daily traffic count of 8,100 vehicles. This prominent location offers excellent visibility and accessibility for both foot and vehicle traffic.

The building was fully remodeled in 2017 and is well-maintained, providing a clean, modern space suitable for a variety of retail or service-based businesses. Zoned C-1, this property supports a wide range of commercial uses.

Lease terms are flexible, with 3- to 5-year options available. Don't miss this opportunity to establish your business in one of Benton City's most active commercial corridors.

### Property Highlights

- Size: ±1,228 SF
- NNN Lease
- Updated Retail Space
- Premier Downtown Location
- VPD: ±8,100
- Zoned C-1

### For More Information

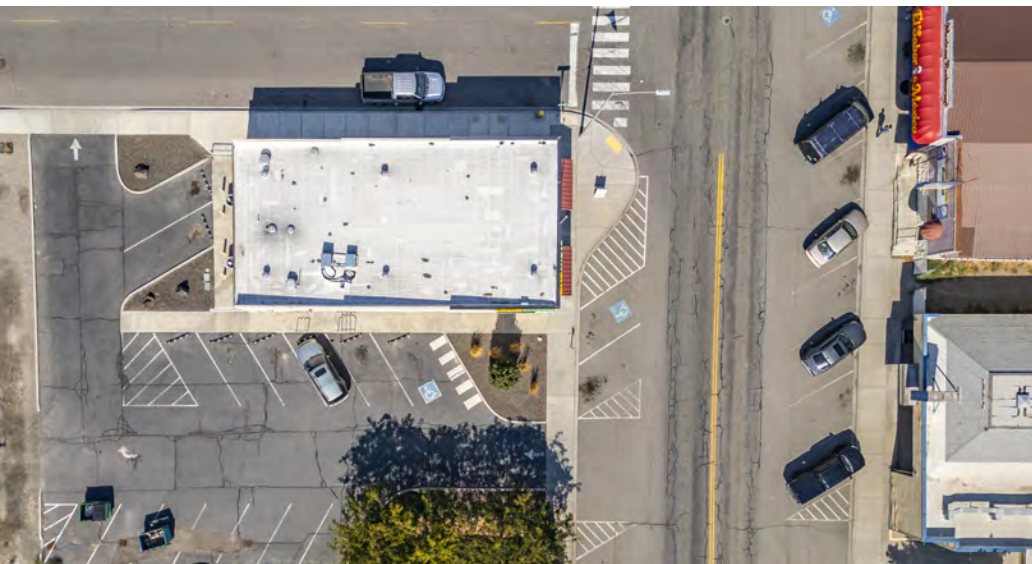
**Jeff Short**

O: 509 943 5200

jeff@naitcc.com



1,228 SF | Retail

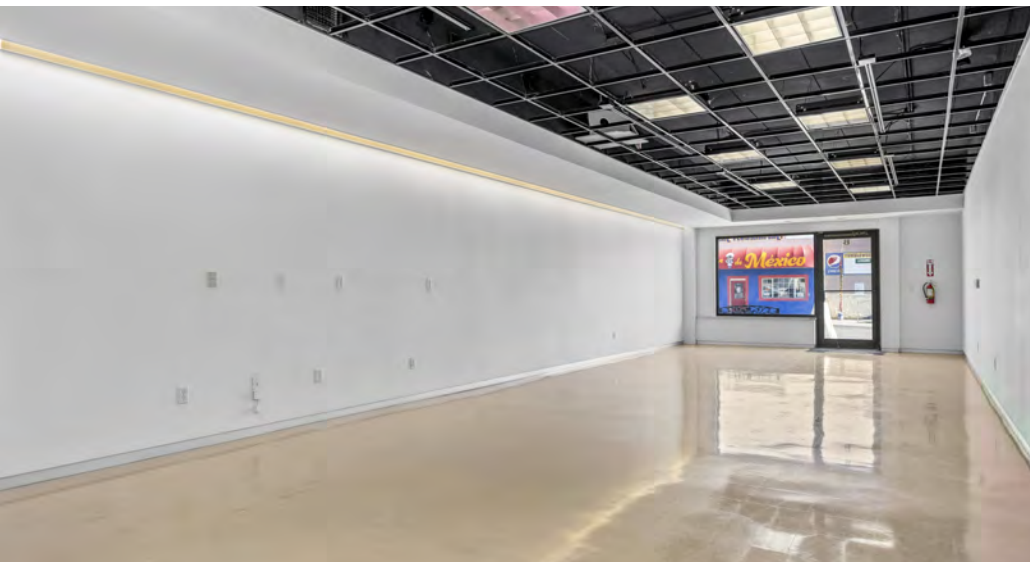


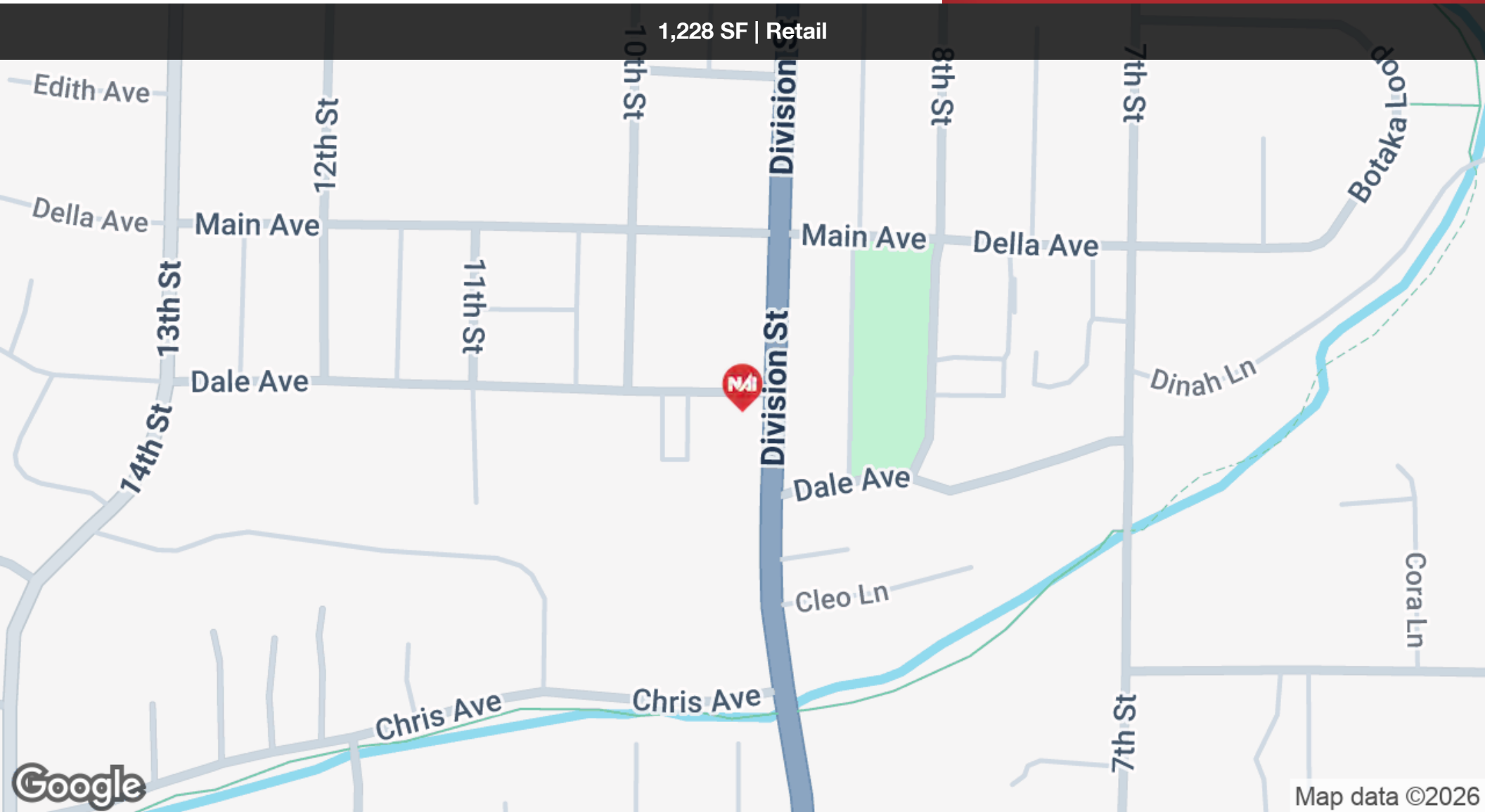
We obtained the information above from sources we believe to be reliable. However, we have not verified its accuracy and make no guarantee, warranty or representation about it. It is submitted subject to the possibility of errors, omissions, change of price, rental or other conditions, prior sale, lease or financing, or withdrawal without notice. We include projections, opinions, assumptions or estimates for example only, and they may not represent current or future performance of the property. You and your tax and legal advisors should conduct your own investigation of the property and transaction.

89 Gage Blvd  
Richland, WA 99352  
509 943 5200 tel  
[naitri-cities.com](http://naitri-cities.com)



1,228 SF | Retail





1,228 SF | Retail

Population	1 Mile	3 Miles	5 Miles
Total Population	3,410	7,405	9,572
Average Age	38	39	40
Average Age (Male)	38	39	40
Average Age (Female)	39	39	40
Households & Income	1 Mile	3 Miles	5 Miles
Total Households	1,283	2,707	3,507
# of Persons per HH	2.7	2.7	2.7
Average HH Income	\$68,257	\$84,312	\$95,042
Average House Value	\$344,764	\$406,977	\$432,897

Demographics data derived from AlphaMap

