

OFFICE SPACE FOR SUBLEASE

300-350 MAC LANE

KEASBEY, NJ 08832



PROPERTY OVERVIEW

BUILDING SF: 236,650 SF

AVAILABLE SF: **11,900 SF OFFICE SPACE**
Divisible to 7,500 SF & 4,400 SF
300 Mac Lane - ± 7,500 SF
350 Mac Lane - 4,424 SF

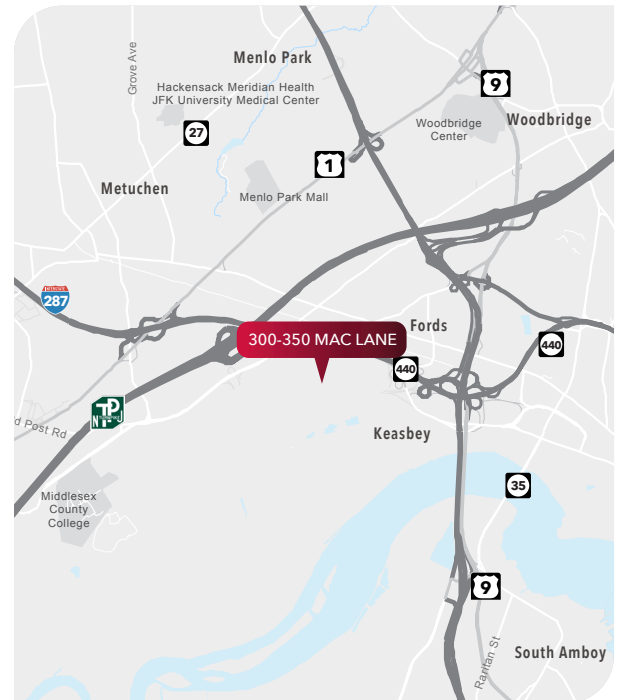
ASKING RATE: Call for pricing

PARKING: Abundant

SUBLEASE EXPIRATION: July 31, 2027

LOCATION:

- Located in Raritan Center
- Close proximity to New Jersey Turnpike, Route 1&9, Route 287, Route 440, and Garden State Parkway



FOR MORE INFORMATION CONTACT EXCLUSIVE BROKERS:

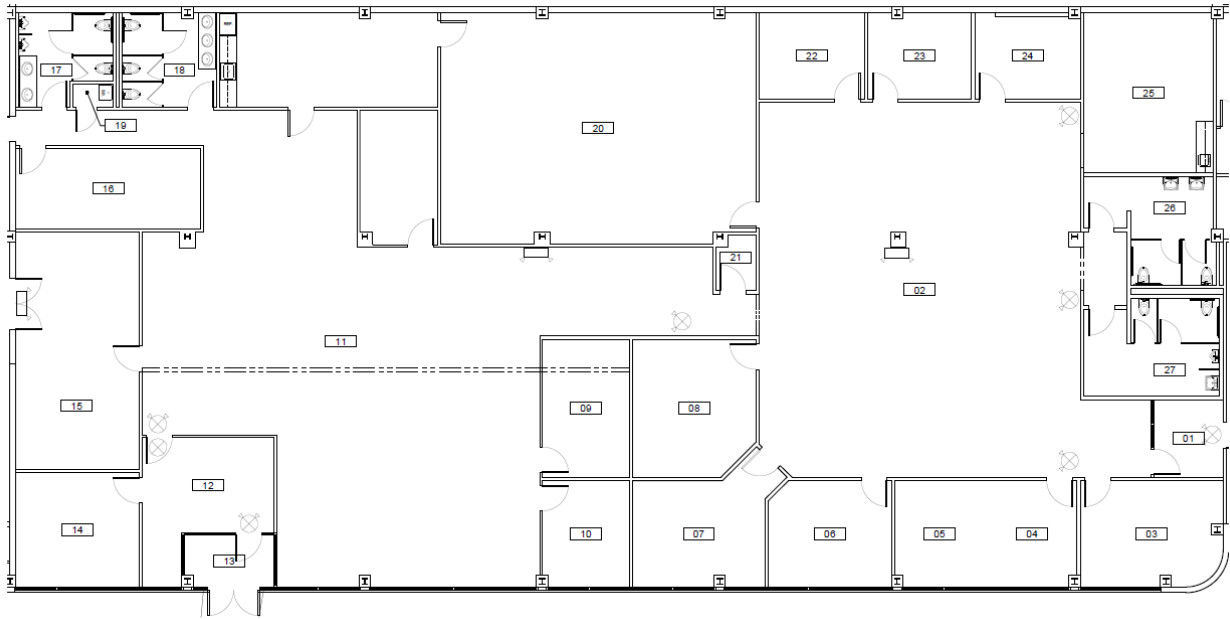
Dan Badenhausen
dan.badenhausen@lee-associates.com
C 908.472.3869

Andrew Stypa
andrew.stypa@lee-associates.com
C 732.996.6607

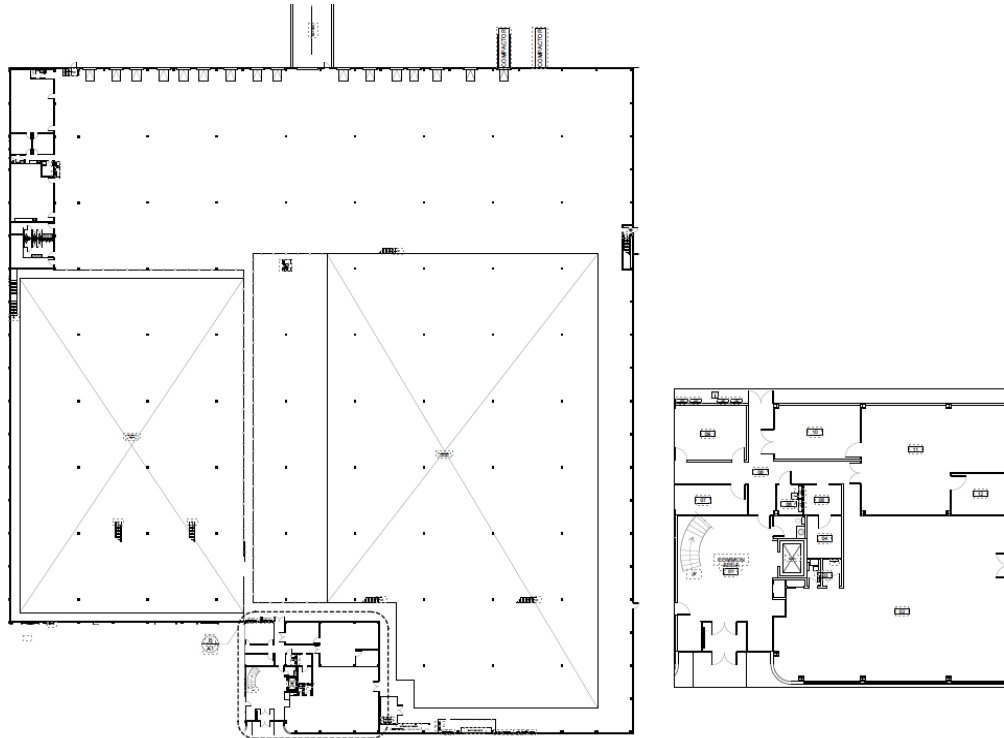
Kyle Janoczkin
kjanoczkin@lee-associates.com
C 732.447.6057

All information furnished regarding property for sale, rental or financing is from sources deemed reliable, but no warranty or representation is made to the accuracy thereof and same is submitted to errors, omissions, change of price, rental or other conditions prior to sale, lease or financing or withdrawal without notice. Buyer acknowledges that Lee & Associates of New Jersey, LLC ("Broker") has not verified the information contained herein and does not make any representation about its accuracy. Buyer should confirm information contained in the Offering using its own sources. No liability of any kind is to be imposed on Broker herein.

OFFICE SPACE FOR SUBLEASE
300-350 MAC LANE
KEASBEY, NJ 08832



300 MAC LANE - 1ST FLOOR PLAN



350 MAC LANE - 1ST FLOOR PLAN

FOR MORE INFORMATION CONTACT EXCLUSIVE BROKERS:

Dan Badenhausen
dan.badenhausen@lee-associates.com
C 908.472.3869

Andrew Stypa
andrew.stypa@lee-associates.com
C 732.996.6607

Kyle Janoczkin
kjanoczkin@lee-associates.com
C 732.447.6057

All information furnished regarding property for sale, rental or financing is from sources deemed reliable, but no warranty or representation is made to the accuracy thereof and same is submitted to errors, omissions, change of price, rental or other conditions prior to sale, lease or financing or withdrawal without notice. Buyer acknowledges that Lee & Associates of New Jersey, LLC ("Broker") has not verified the information contained herein and does not make any representation about its accuracy. Buyer should confirm information contained in the Offering using its own sources. No liability of any kind is to be imposed on Broker herein.