

EXCLUSIVE LISTING!

20 +/- Acres in Moapa Valley, Clark County, Nevada
Listed for \$50,000



- ❖ APN 071-20-000-004
- ❖ Moapa Valley jurisdiction in Clark County, Nevada
- ❖ 20 +/- Acres Zoned RS80-Residential Single-Family-low density
- ❖ Planned land use-OL Open Land
- ❖ No utilities near parcel/ hilly terrain
- ❖ Moapa, Overton and Logandale are small towns in the Moapa Valley region.
- ❖ Close to Valley of Fire, Mesquite and Lake Mead Recreation Area



Mark Anthony Rua
Brokers

S.026655

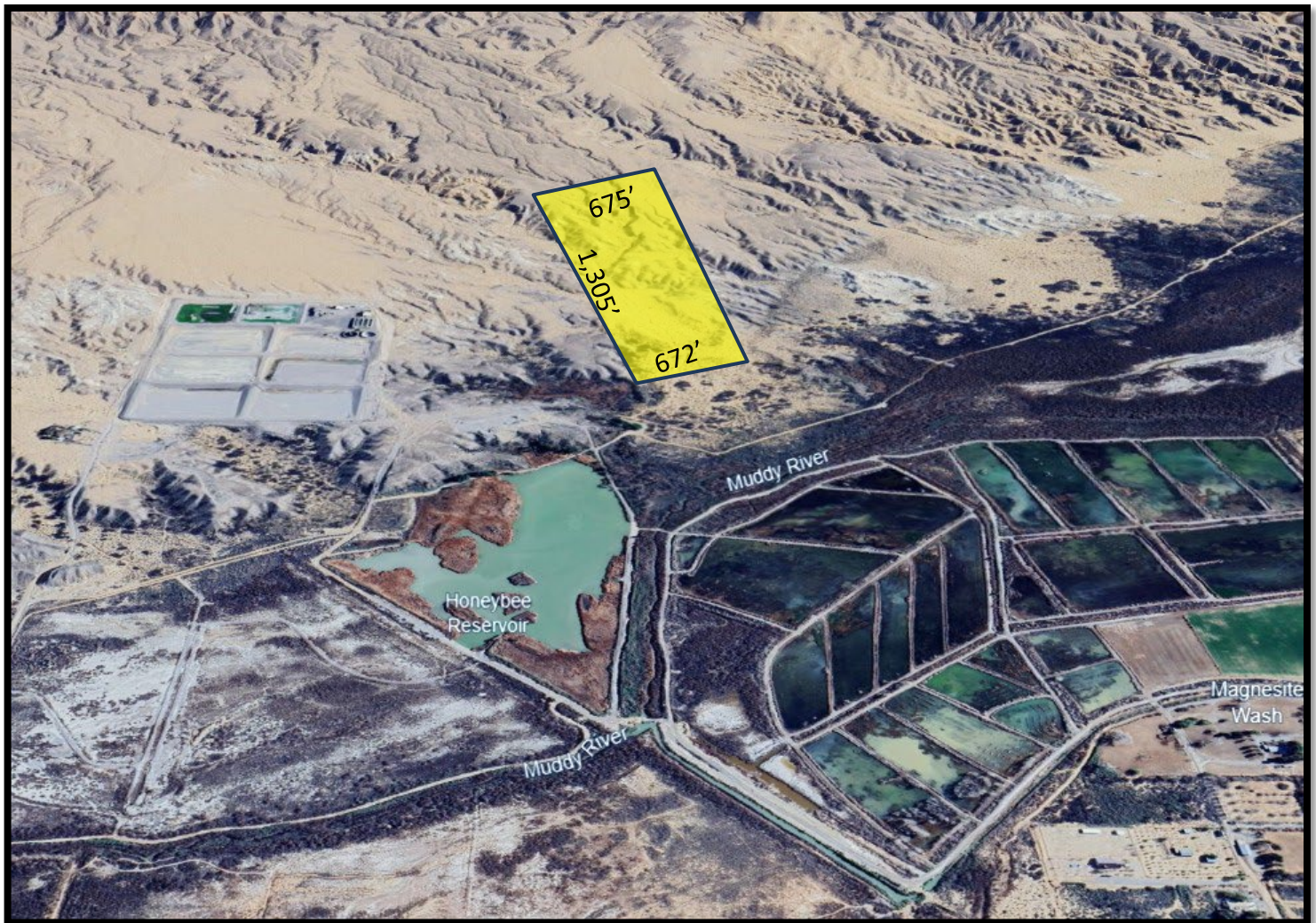
2855 St Rose Parkway, Suite 100, Henderson, NV 89052
markanthonyrua@gmail.com www.mrlandlasvegas.com

Office: 702-992-7534
Cell: 702-595-6244



The information contained herein is subject to verification and no liability for errors or omissions is assumed. The price, data, and other information are subject to change or the listing may be withdrawn without notice.

20 +/- Acres in Moapa Valley, Clark County, Nevada



As of the 2023, Moapa Valley had a population of 6,699. The valley is 40 miles long. The Muddy River originates from the Warm Springs natural area, flows through the valley, and empties into Lake Mead.



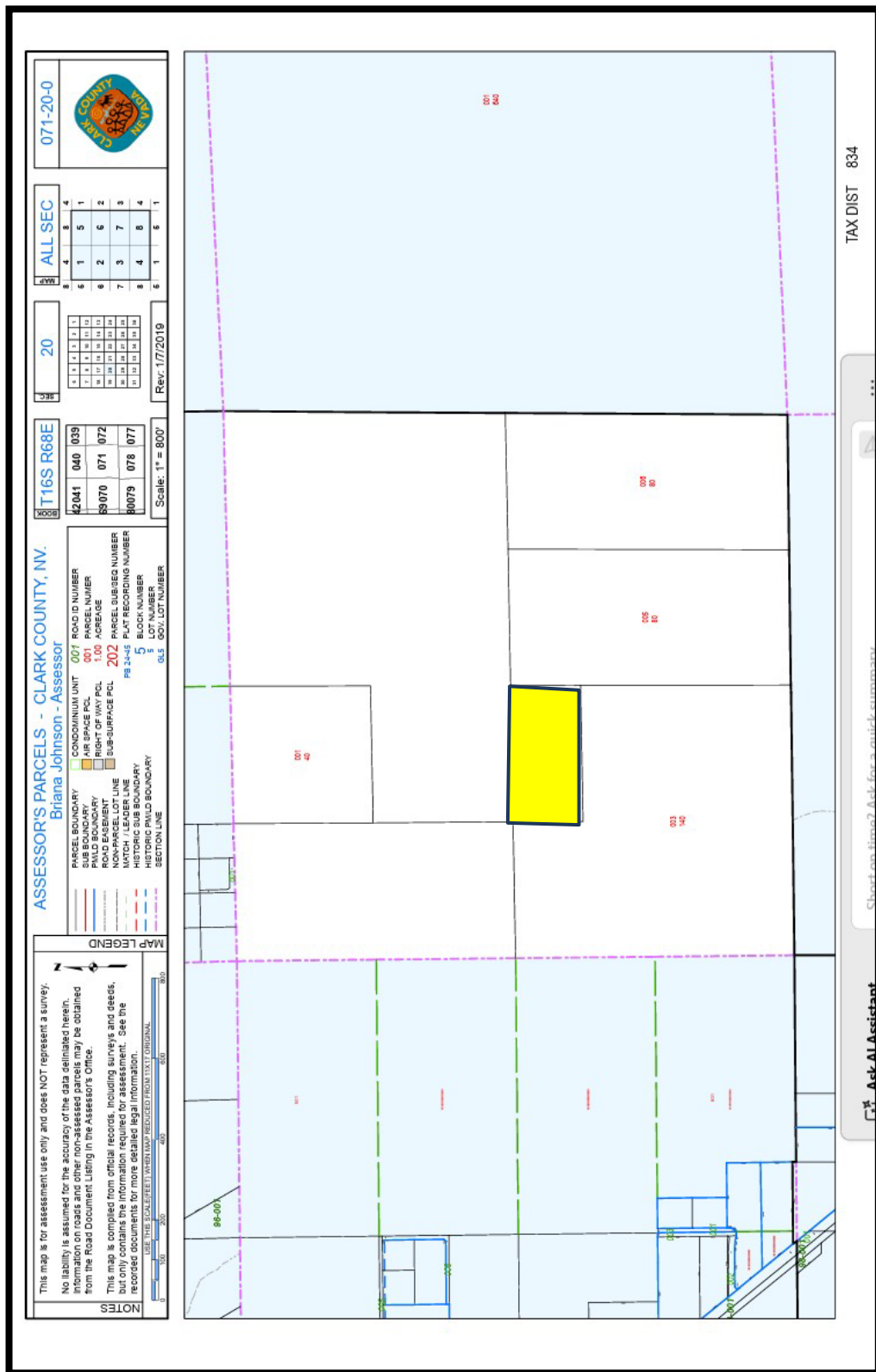
Mark Anthony Rua
Brokers

2855 St Rose Parkway, Suite 100, Henderson, NV 89052
markanthonyrua@gmail.com www.mrlandlasvegas.com

Office: 702-992-7534
Cell: 702-595-6244



The information contained herein is subject to verification and no liability for errors or omissions is assumed. The price, data, and other information are subject to change or the listing may be withdrawn without notice.



20 +/- Acres in Moapa Valley, Clark County, Nevada



Mark Anthony Rua
Brokers
 REAL ESTATE CONSOLIDATED

Office: 702-992-7534
 Cell: 702-595-6244
 2855 St Rose Parkway, Suite 100, Henderson, NV 89052
markanthonyrua@gmail.com www.mrlandlasvegas.com



The information contained herein is subject to verification and no liability for errors or omissions is assumed. The price, data, and other information are subject to change or the listing may be withdrawn without notice.