

FOR LEASE



## PROPERTY DETAILS

26<sup>th</sup> Street & Grant Avenue, Ogden, UT 84404

- New mixed-use development located in the heart of Ogden's Historic 25<sup>th</sup> Street
- 13,450 SF grocery store space
- 36,545 SF of high end retail/food and beverage space available
- Over 350 residential units
- New boutique 90-key hotel
- 100,000 SF class A office building
- Located adjacent to Historic 25<sup>th</sup> Street
- Delivery Q2 2026

## 2025 DEMOS



### EST. POPULATION

1 MILE » 000,000  
3 MILE » 000,000  
5 MILE » 000,000



### EST. HOUSEHOLDS

1 MILE » 000,000  
3 MILE » 000,000  
5 MILE » 000,000



### EST. AVERAGE HH INCOME

1 MILE » \$000,000  
3 MILE » \$000,000  
5 MILE » \$000,000

# NEWMARK



## MOUNTAIN WEST

### ADAM HAWKES

ahawkes@newmarkmw.com  
direct 801.416.1034  
[View Profile](#)

### ANDY MOFFITT

amoffitt@newmarkmw.com  
direct 801.456.8811  
[View Profile](#)

**FULL SERVICE  
COMMERCIAL REAL ESTATE**  
312 East South Temple  
Salt Lake City, Utah 84111  
Office 801.456.8800  
[www.newmarkmw.com](http://www.newmarkmw.com)



# RENDERINGS



# NEWMARK

**MOUNTAIN WEST**

**ADAM HAWKES**

ahawkes@newmarkmw.com

direct 801.416.1034

[View Profile](#)

**ANDY MOFFITT**

amoffitt@newmarkmw.com

direct 801.456.8811

[View Profile](#)

**FULL SERVICE  
COMMERCIAL REAL ESTATE**

312 East South Temple

Salt Lake City, Utah 84111

Office 801.456.8800

[www.newmarkmw.com](http://www.newmarkmw.com)



## CURRENT CONSTRUCTION PHOTOS DELIVERY Q2 2026



# NEWMARK

---

 **MOUNTAIN WEST**





**ADAM HAWKES**  
ahawkes@newmarkmw.com  
direct 801.416.1034  
[View Profile](#)

**ANDY MOFFITT**  
amoffitt@newmarkmw.com  
direct 801.456.8811  
[View Profile](#)

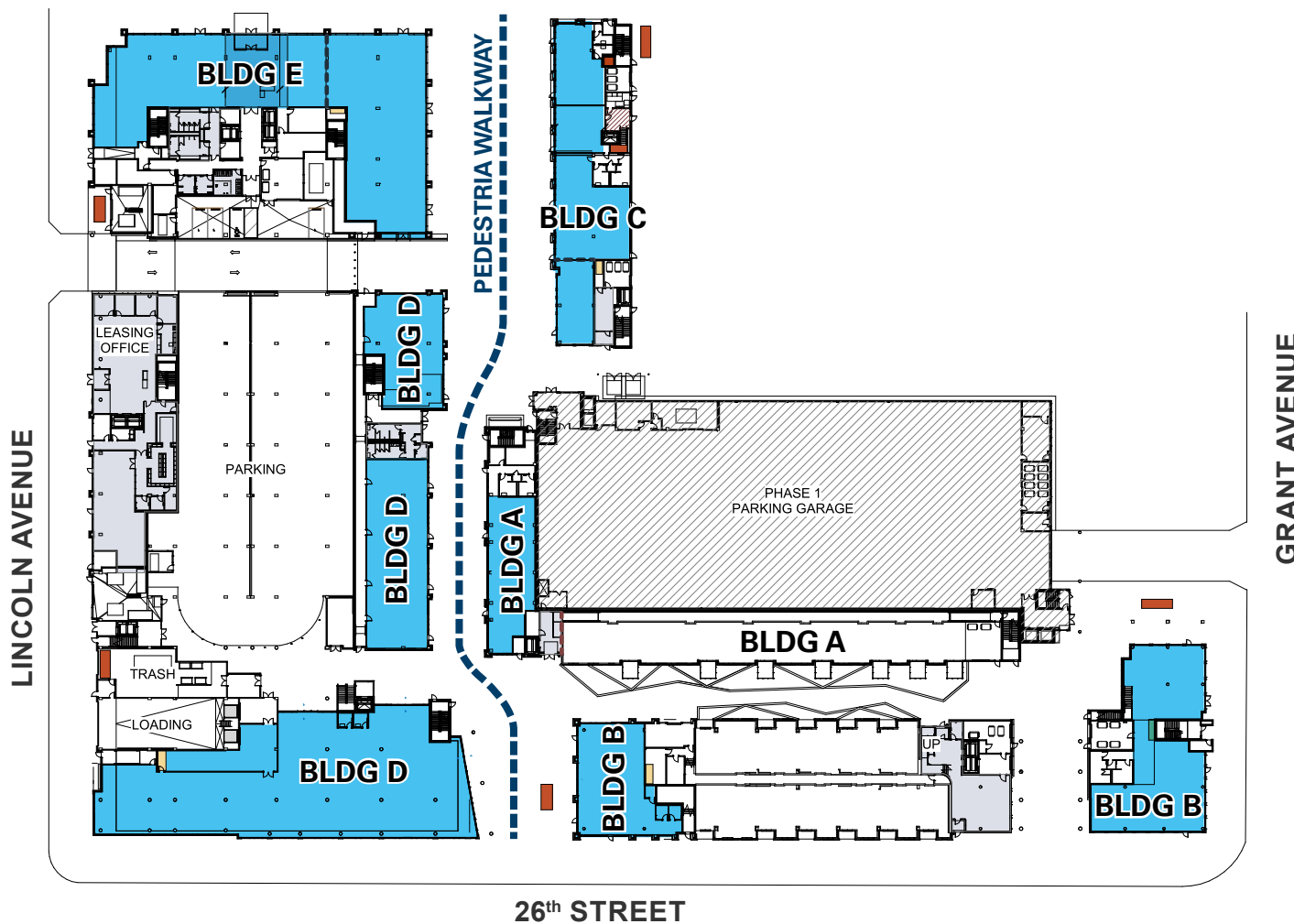


**FULL SERVICE  
COMMERCIAL REAL ESTATE**  
312 East South Temple  
Salt Lake City, Utah 84111  
Office 801.456.8800  
[www.newmarkmw.com](http://www.newmarkmw.com)

## SITE PLAN

-  Residential / Amenity
-  Grease Shaft
-  Grease Interceptor
-  Slab Step

25<sup>th</sup> STREET



26<sup>th</sup> STREET

BLDG A	1,200 - 2,330 SF
BLDG B	1,200 - 8,056 SF
BLDG C	1,200 - 8,785 SF
BLDG D	20,174 SF
BLDG E	1,200 - 10,660 SF
<b>TOTAL</b>	<b>50,005 SF</b>

# NEWMARK

 **MOUNTAIN WEST**

**ADAM HAWKES**

ahawkes@newmarkmw.com

direct 801.416.1034

[View Profile](#)

**ANDY MOFFITT**

amoffitt@newmarkmw.com

direct 801.456.8811

[View Profile](#)

**FULL SERVICE  
COMMERCIAL REAL ESTATE**

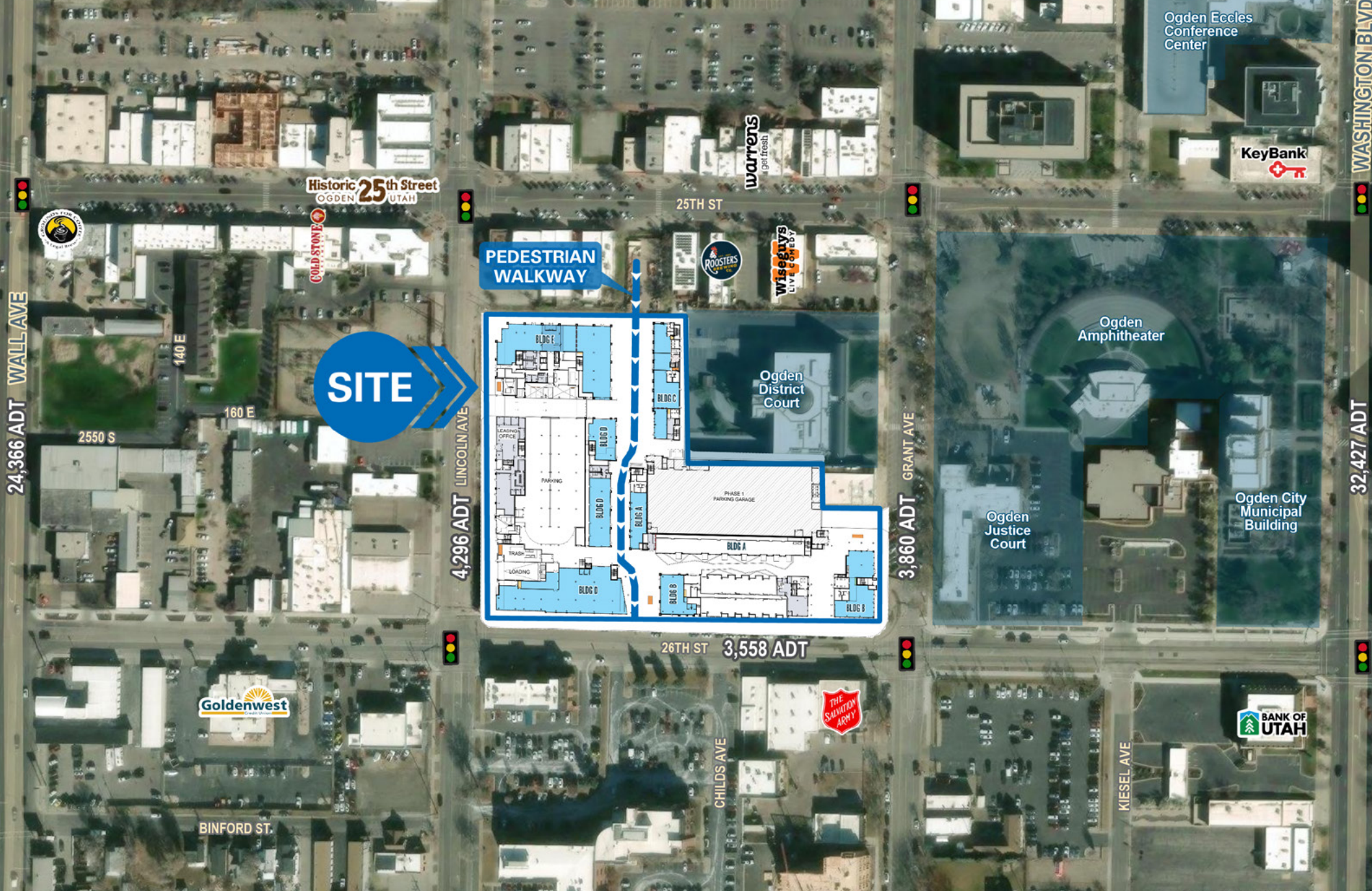
312 East South Temple

Salt Lake City, Utah 84111

Office 801.456.8800

[www.newmarkmw.com](http://www.newmarkmw.com)



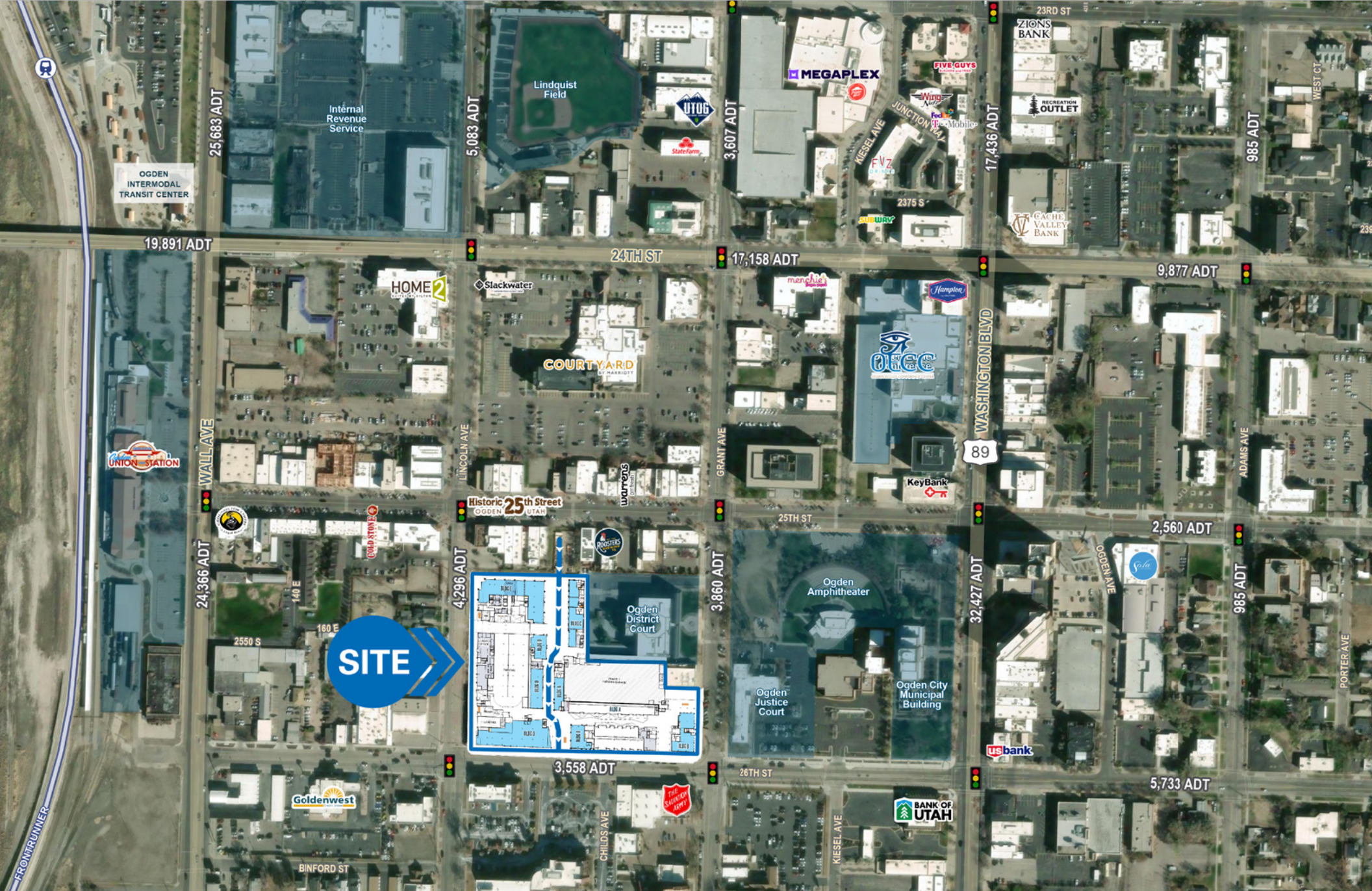


**ADAM HAWKES**  
ahawkes@newmarkmw.com  
direct 801.416.1034  
[View Profile](#)

**ANDY MOFFITT**  
amoffitt@newmarkmw.com  
direct 801.456.8811  
[View Profile](#)

**FULL SERVICE  
COMMERCIAL REAL ESTATE**  
312 East South Temple  
Salt Lake City, Utah 84111  
Office 801.456.8800  
[www.newmarkmw.com](http://www.newmarkmw.com)



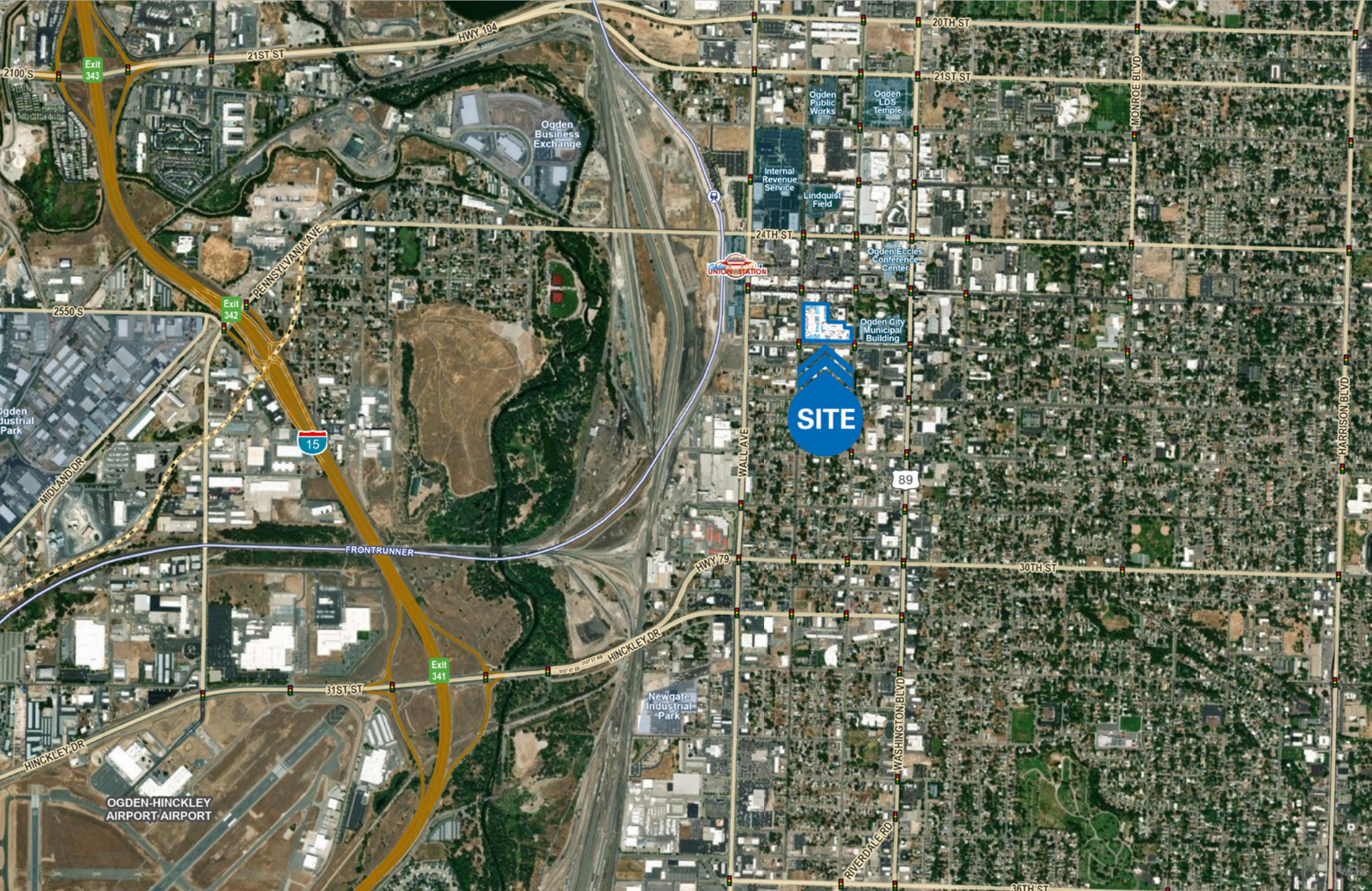


**ADAM HAWKES**  
 ahawkes@newmarkmw.com  
 direct 801.416.1034  
[View Profile](#)

**ANDY MOFFITT**  
 amoffitt@newmarkmw.com  
 direct 801.456.8811  
[View Profile](#)

**FULL SERVICE  
 COMMERCIAL REAL ESTATE**  
 312 East South Temple  
 Salt Lake City, Utah 84111  
 Office 801.456.8800  
[www.newmarkmw.com](http://www.newmarkmw.com)





**ADAM HAWKES**  
ahawkes@newmarkmw.com  
direct 801.416.1034  
[View Profile](#)

**ANDY MOFFITT**  
amoffitt@newmarkmw.com  
direct 801.456.8811  
[View Profile](#)

**FULL SERVICE  
COMMERCIAL REAL ESTATE**  
312 East South Temple  
Salt Lake City, Utah 84111  
Office 801.456.8800  
[www.newmarkmw.com](http://www.newmarkmw.com)