

7605 VIRGINIA PARKWAY MCKINNEY, TX 75071


TRANSWESTERN

\$1,660,000 (\$375/SF)
2.02 ACRES APPROX.

- Building Size: 4,431 SF
- Zoning: PD
- Former Childcare Building
- Great Frontage and Visibility along Virginia Parkway
- Traffic Volume along Virginia Parkway 18,904 Daily (2021 traffic count)
- Easy Access to Custer Rd and Highway 380
- 3.8% Annual Population Growth over last 5 years
- Inspection Report Available upon Request

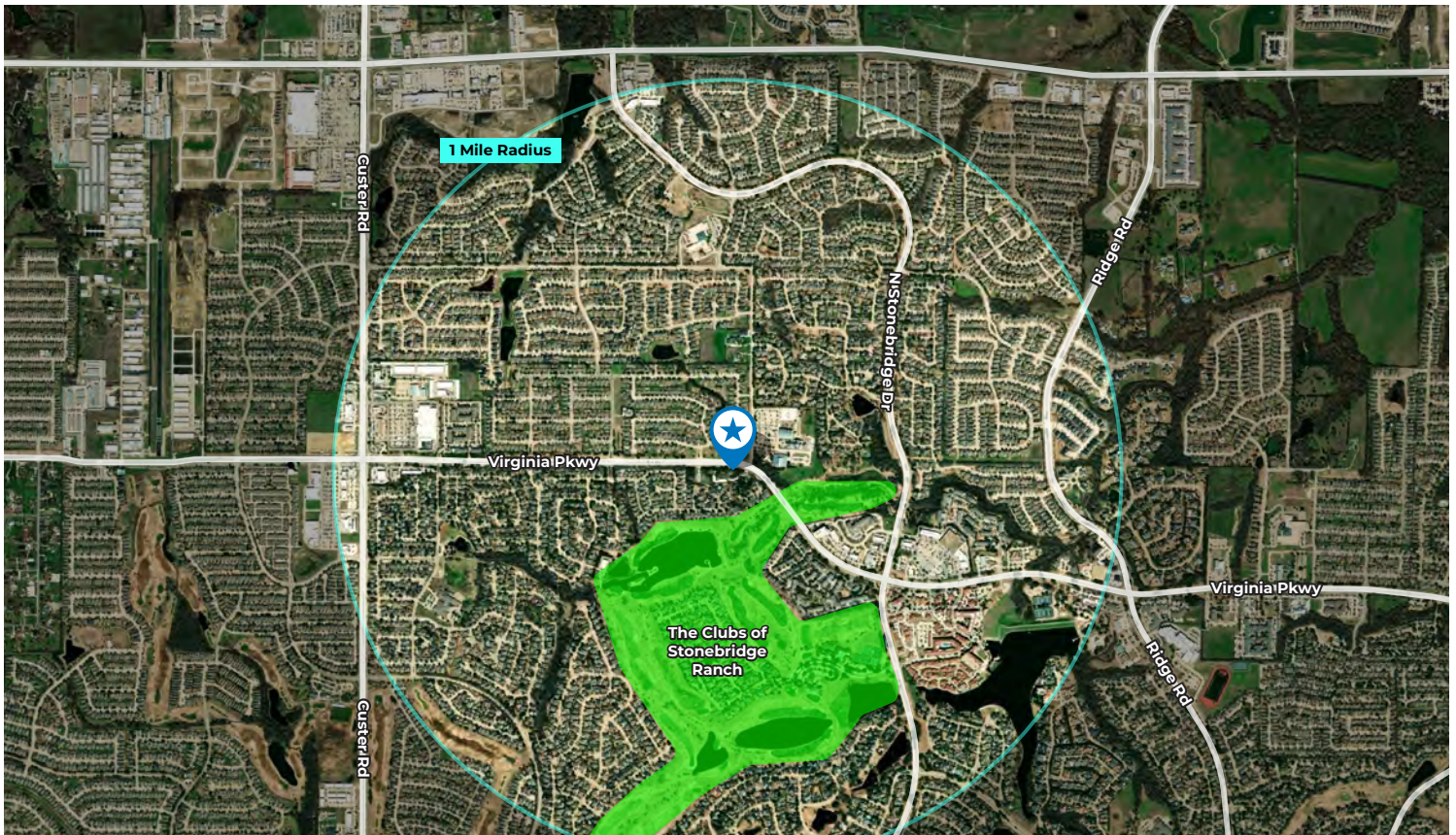


Contact

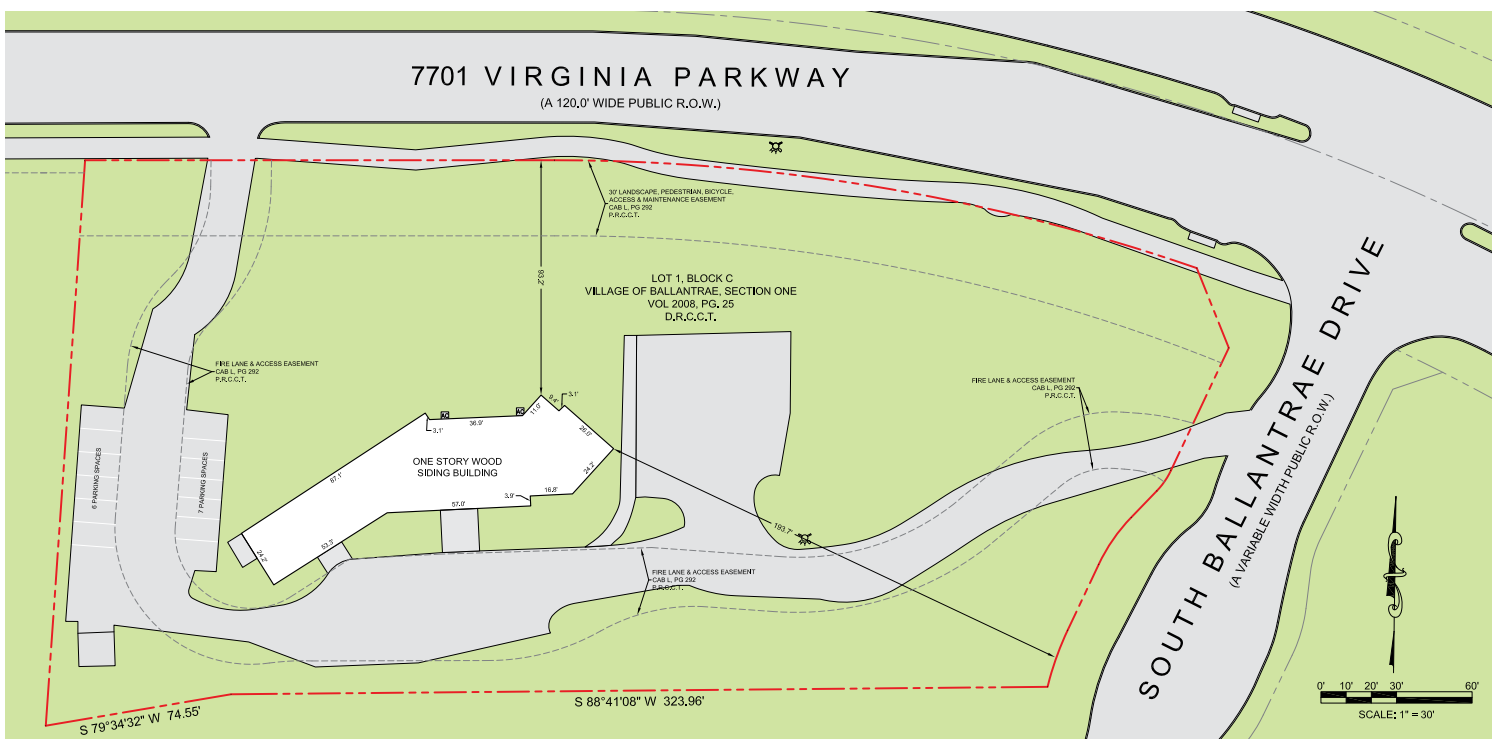
Ethan Minter
Senior Associate
ethan.minter@transwestern.com
214.292.6437

The information provided herein was obtained from sources believed reliable; however, Transwestern makes no guarantees, warranties or representations as to the completeness of accuracy thereof. The presentation of this property is submitted subject to errors, omissions, change of price or conditions, prior to sale or lease, or withdrawal without notice. Copyright © 2025 Transwestern.





Average Household Income in 1-mile radius: \$176,000+



Contact

Ethan Minter
Senior Associate
ethan.minter@transwestern.com
214.292.6437

The information provided herein was obtained from sources believed reliable; however, Transwestern makes no guarantees, warranties or representations as to the completeness of accuracy thereof. The presentation of this property is submitted subject to errors, omissions, change of price or conditions, prior to sale or lease, or withdrawal without notice. Copyright © 2025 Transwestern.