

# WAREHOUSE DISTRICT



CLEVELAND

HISTORIC  
CHARM,  
MODERN  
POSSIBILITIES

PREMIER OFFICE SPACE FOR LEASE



CBRE



5-4 MANAGEMENT

SIXTY NORTH



Thousands of residents enjoy exciting living options—from loft apartments to penthouses to new condos—with spectacular views of the city and Lake Erie and easy access to everything



Scenic parks and green space provide tranquility right in the middle of a bustling urban landscape



Dining options for all parts of life—quick workday lunches, weekend brunches, coffee shops for all-day-all-week fuel, and lively bars for a vibrant nightlife scene



Discover the Warehouse District's storied past with history and architectural excellence to explore at every corner



LAKESIDE PLACE



BRADLEY BUILDING

## RICH HISTORY BLENDED SEAMLESSLY WITH A TRULY MODERN FEEL

The Warehouse District has **ideal spaces for every business need**—service firms, large and small corporate offices, nonprofits, creative & tech companies, and everything in between. The beautiful **Italianate Victorian facades** reflect the neighborhood's rich history without compromising modern business' needs. **Modern finishes** and **unparalleled building and area amenities** make the Warehouse District the most compelling place to do business in the city.



STONE BLOCK



WORTHINGTON BUILDING

323 W LAKESIDE AVE  
**LAKESIDE  
PLACE**

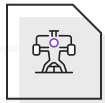
**REMAINING  
AVAILABILITIES**

Suite 162 7,262 RSF

Suite 180 2,583 RSF



West 3rd Deli



On-site fitness  
center



Building conference  
center



# 1220 W 6TH BRADLEY BUILDING

## REMAINING AVAILABILITIES

Suite 205 1,610 RSF

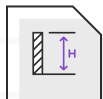
Suite 400 3,240 RSF



2,000 - 4,300 sq ft  
available



Modern  
finishes



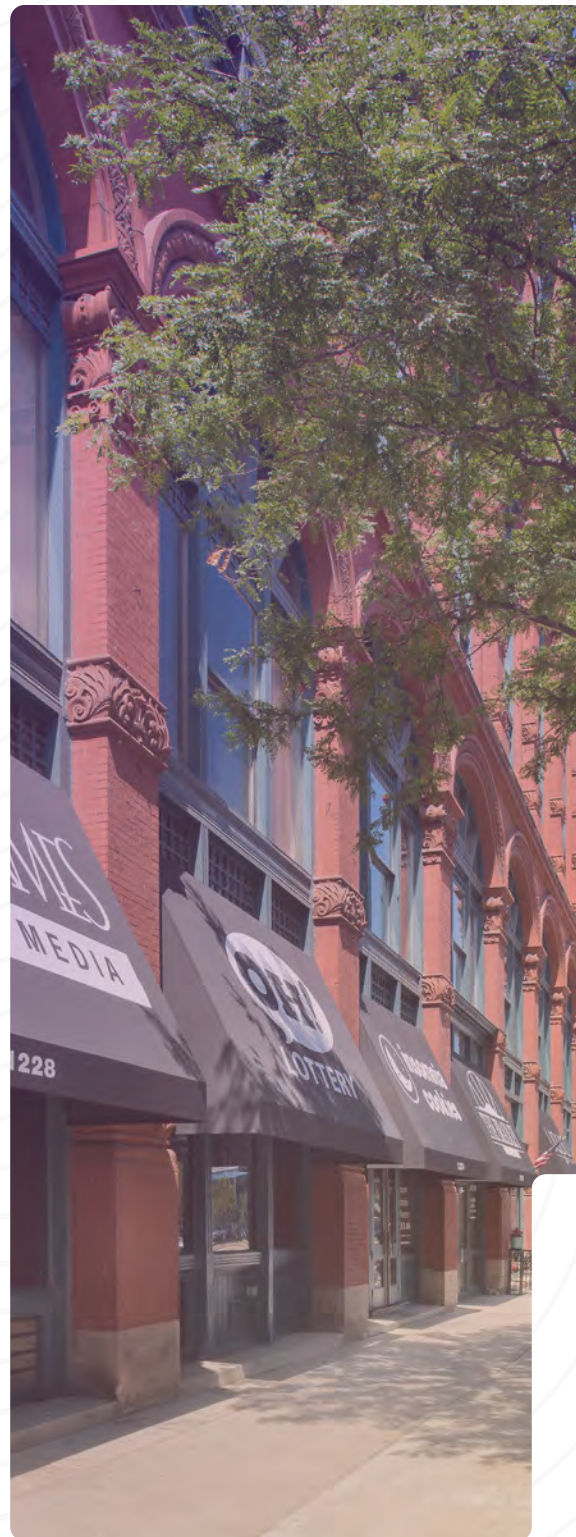
High  
ceilings



Ample surface  
parking

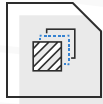


Insomnia  
Cookies

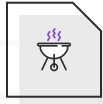


WAREHOUSE  
DISTRICT

# 800 W ST. CLAIR AVE WORTHINGTON BUILDING



19,305 sq ft  
total space available



Shared courtyard with outdoor  
seating and grill

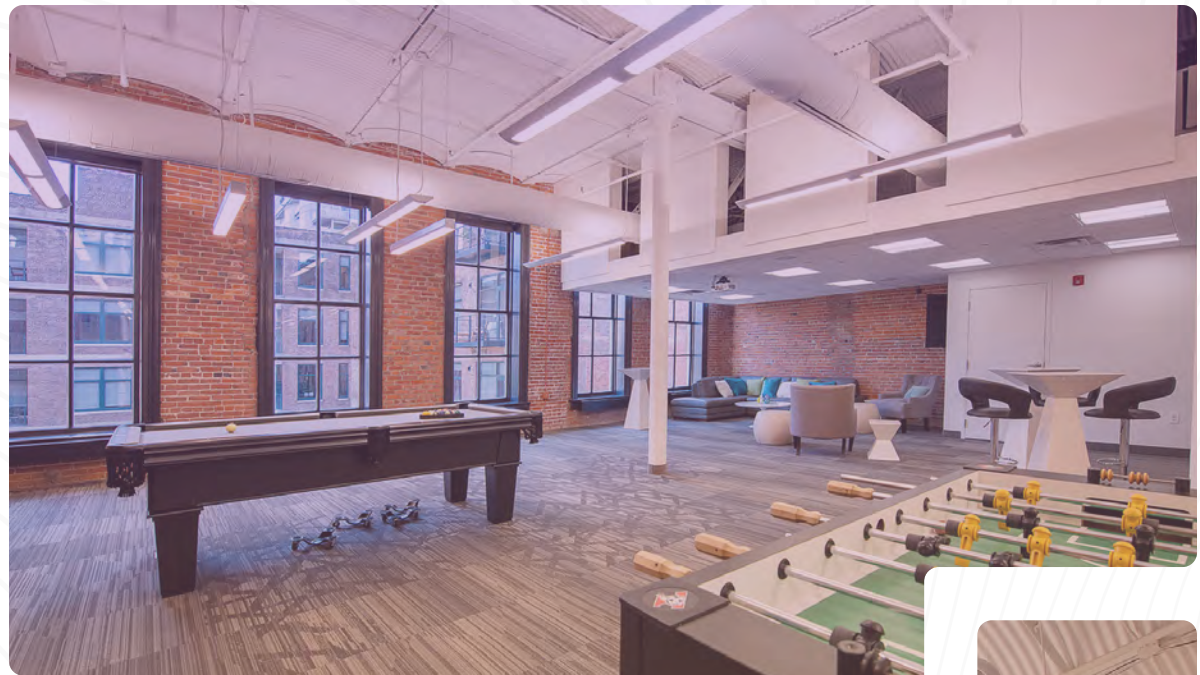


Cleveland Chop and Blue Point  
Grille located on first floor

## AVAILABILITIES

3rd Floor 9,720 RSF

4th Floor 9,585 RSF



# 425 W LAKESIDE

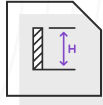
## STONE BLOCK



One suite remains  
Suite 200 - 6,849 RSF



Modern  
finishes



High  
ceilings



Exposed brick  
interiors



Ample surface  
parking



# WALKABILITY MAP



Browns Stadium

**10 MIN**

**5 MIN**



Lighthouse Park

**3 MIN**



Sherwin Williams

**7 MIN**



Flats East Bank

**Pit Parking**

\$75 monthly  
\$5 daily



**LULO**  
KITCHEN & JUICE BAR

**WAREHOUSE  
DISTRICT**



Johnny's  
DOWNTOWN

**3 MIN**



phoenix  
coffee co.

W 3rd St

Lakeside Ave E

E 6th St

Ave

4th St

W 4th St  
W 5th St  
W 6th St  
W 7th St  
W 8th St  
W 9th St

6-20

6-20

Elm Ave

Canal Rd

Center St



# CONTACTS

**WARREN  
BLAZY III**

+1 330 606 5917  
warren.blazy@cbre.com

**ERIC  
SMITH**

+1 330 714 6558  
eric.smith3@cbre.com

©2023 CBRE, Inc. All rights reserved. This information has been obtained from sources believed reliable, but has not been verified for accuracy or completeness. You should conduct a careful, independent investigation of the property and verify all information. Any reliance on this information is solely at your own risk. CBRE and the CBRE logo are service marks of CBRE, Inc. All other marks displayed on this document are the property of their respective owners, and the use of such logos does not imply any affiliation with or endorsement of CBRE. Photos herein are the property of their respective owners. Use of these images without the express written consent of the owner is prohibited. PMStudio\_October2023

**WAREHOUSE  
DISTRICT**  
CLEVELAND



**CBRE**



5-4 MANAGEMENT

SIXTY NORTH