

FOR SUBLEASE

2213

SUNSET BOULEVARD

LOS ANGELES, CA



SPECTRUM
COMMERCIAL REAL ESTATE, INC.
spectrumcre.com | 818.252.9900

No warranty, express or implied, is made as to the accuracy of the information contained herein. This information is submitted subject to errors, omission, change of price, rental or other conditions, withdrawal without notice, and is subject to any special listing conditions imposed by our principals. Cooperating brokers, buyers, tenants and other parties who receive this document should not rely on it, but should use it as a starting point of analysis, and should independently confirm the accuracy of the information contained herein through a due diligence review of the books, records, files and documents that constitute reliable sources of the information described herein. Spectrum Commercial Real Estate, Inc. CA DRE #02042805

CHRIS ALIHEMMAT
Vice President
419.280.3361
calihemmat@spectrumcre.com
CA DRE Lic. #02105695

PROPERTY HIGHLIGHTS



724 SF
RETAIL/RESTAURANT SPACE



TENANT HAS APPROX.
8.5 YEARS LEFT



PRIME LOCATION
VIA SUNSET BLVD



WELL-DESIGNED
PROPERTY LAYOUT



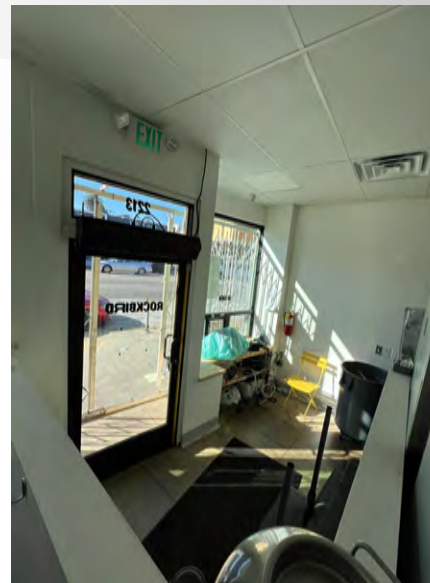
EXCELLENT MONUMENT &
SIGNAGE OPPORTUNITY



ASKING KEY MONEY
\$125,000.00

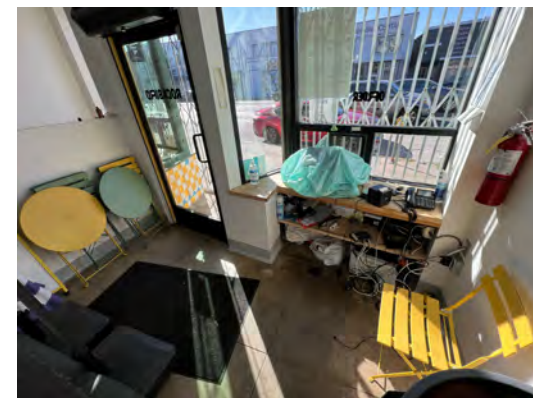
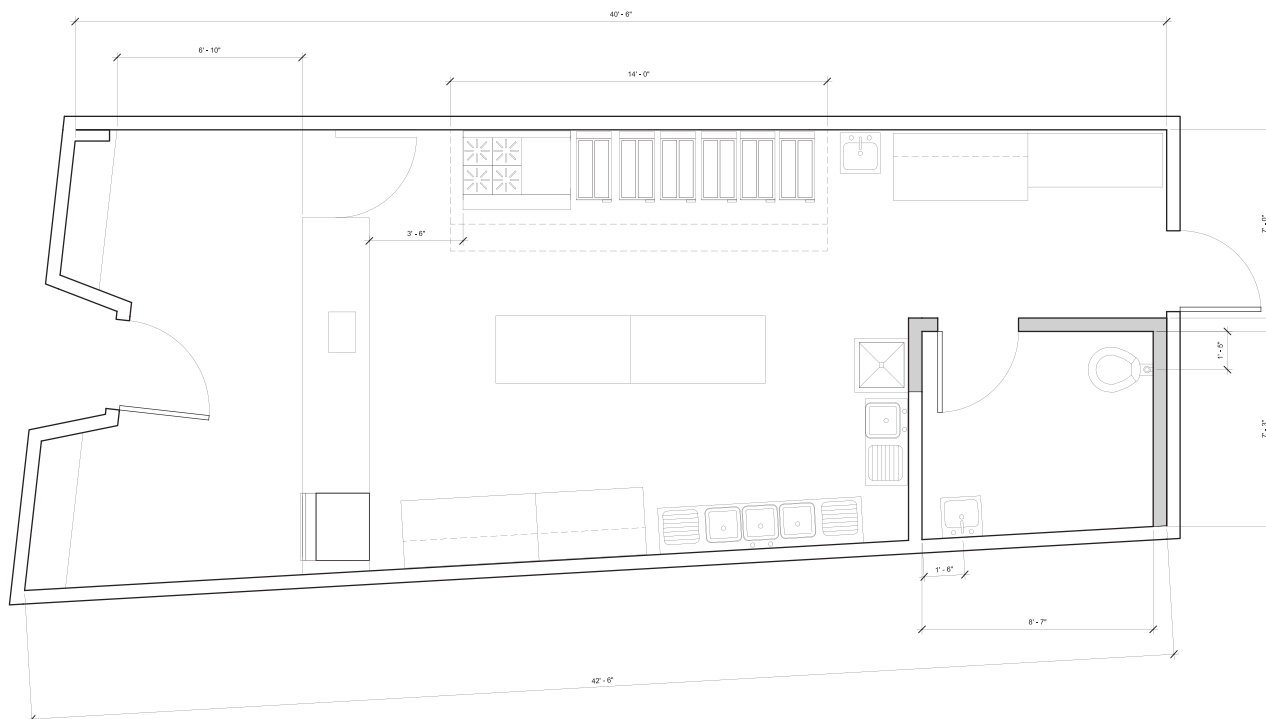
THE BASE RENT IS \$5,376.64
& THE SCHEDULE IS AS FOLLOWS

RENT COMMENCEMENT DATE	RENT AMOUNT
3RD ANNIVERSARY	\$5,537.94
4TH ANNIVERSARY	\$5,704.08
5TH ANNIVERSARY	\$5,875.20
6TH ANNIVERSARY	\$6,051.46
7TH ANNIVERSARY	\$6,233.00
8TH ANNIVERSARY	\$6,419.99
9TH ANNIVERSARY	\$6,612.59



FLOOR PLAN

SUNSET BOULEVARD



SPECTRUM
COMMERCIAL REAL ESTATE, INC.
spectrumcre.com | 818.252.9900

No warranty, express or implied, is made as to the accuracy of the information contained herein. This information is submitted subject to errors, omission, change of price, rental or other conditions, withdrawal without notice, and is subject to any special listing conditions imposed by our principals. Cooperating brokers, buyers, tenants and other parties who receive this document should not rely on it, but should use it as a starting point of analysis, and should independently confirm the accuracy of the information contained herein through a due diligence review of the books, records, files and documents that constitute reliable sources of the information described herein. Spectrum Commercial Real Estate, Inc. CA DRE #02042805

CHRIS ALIHEMMAT
Vice President
419.280.3361
calihemmat@spectrumcre.com
CA DRE Lic. #02105695

AMENITIES MAP



SPECTRUM
COMMERCIAL REAL ESTATE, INC.
spectrumcre.com | 818.252.9900

No warranty, express or implied, is made as to the accuracy of the information contained herein. This information is submitted subject to errors, omission, change of price, rental or other conditions, withdrawal without notice, and is subject to any special listing conditions imposed by our principals. Cooperating brokers, buyers, tenants and other parties who receive this document should not rely on it, but should use it as a starting point of analysis, and should independently confirm the accuracy of the information contained herein through a due diligence review of the books, records, files and documents that constitute reliable sources of the information described herein. Spectrum Commercial Real Estate, Inc. CA DRE #02042805

CHRIS ALIHEMMAT
Vice President
419.280.3361
calihemmat@spectrumcre.com
CA DRE Lic. #02105695

PROPERTY HIGHLIGHTS



POPULATION

	1 MILE	3 MILES	5 MILES
Estimated Population	59,067	575,814	1,192,982
Estimated Households	22,526	237,387	458,456



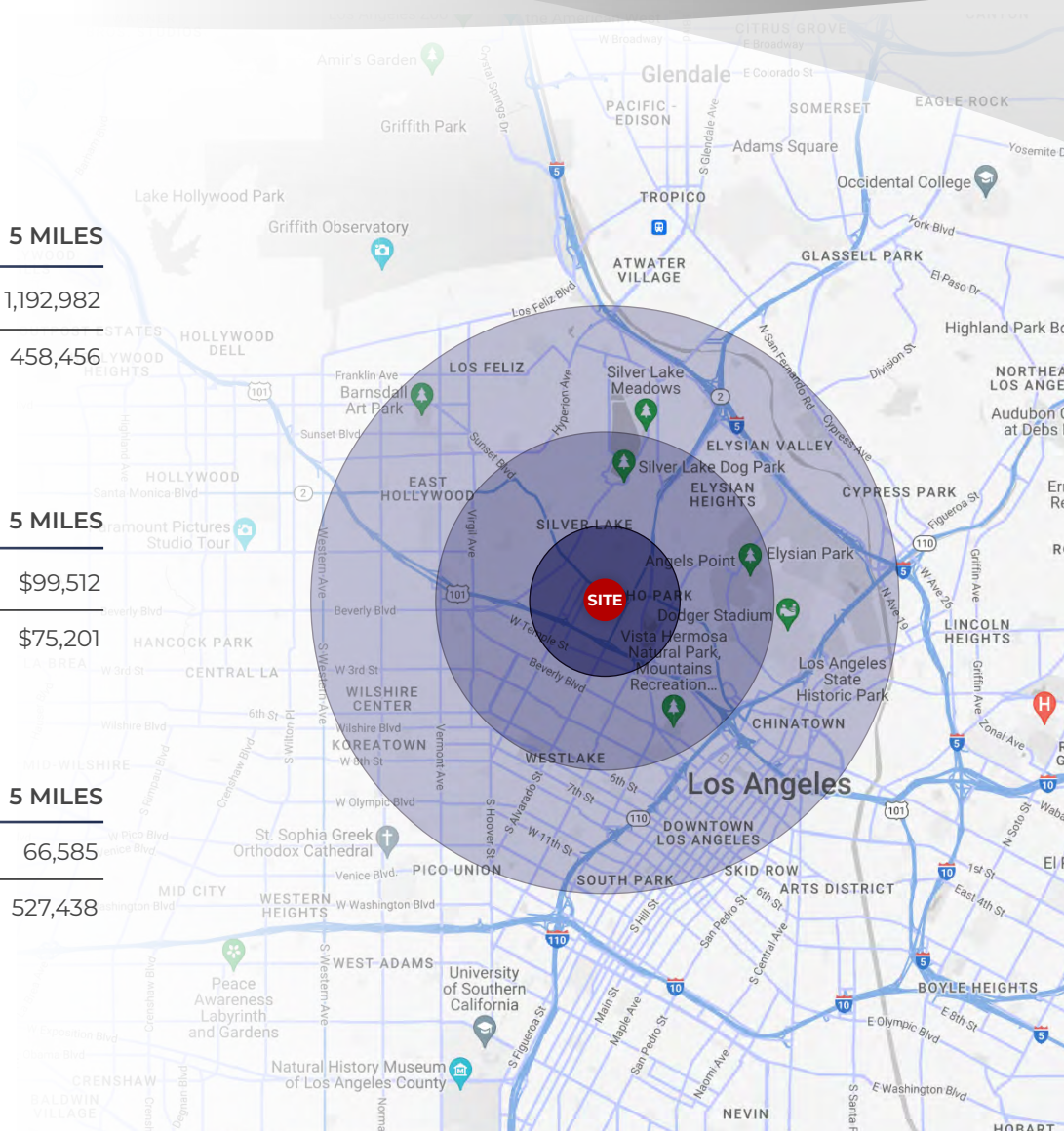
HOUSEHOLD INCOME

	1 MILE	3 MILES	5 MILES
Average Household Income	\$122,568	\$92,122	\$99,512
Median Household Income	\$86,384	\$72,671	\$75,201



DAYTIME POPULATION

	1 MILE	3 MILES	5 MILES
Total Businesses	1,861	34,777	66,585
Total Employees	11,116	295,974	527,438



2213

SUNSET BOULEVARD

LOS ANGELES, CA

FOR SUBLEASE



CHRIS ALIHEMMAT

Vice President

419.280.3361

calihemmat@spectrumcre.com

CA DRE Lic. #02105695

SPECTRUM
— COMMERCIAL REAL ESTATE, INC.

spectrumcre.com | 661.306.9600

No warranty, express or implied, is made as to the accuracy of the information contained herein. This information is submitted subject to errors, omission, change of price, rental or other conditions, withdrawal without notice, and is subject to any special listing conditions imposed by our principals. Cooperating brokers, buyers, tenants and other parties who receive this document should not rely on it, but should use it as a starting point of analysis, and should independently confirm the accuracy of the information contained herein through a due diligence review of the books, records, files and documents that constitute reliable sources of the information described herein. Spectrum Commercial Real Estate, Inc. CA DRE #02042805