

12380 GLOBE STREET  
LIVONIA, MICHIGAN

INDUSTRIAL FOR SALE OR LEASE  
17,731 Square Feet Available



**SIGNATURE  
ASSOCIATES**  
KNOW SIGNATURE | KNOW RESULTS



## PROPERTY FEATURES

- 17,731 square feet available
- 2,321 square feet of office space
- Zoned industrial improved
- 19' clear height
- (2) 12x14 grade level door
- 46 parking spaces
- Located on 1.09 acres
- Completely gutted and ready for new office to be installed including restrooms
- Construction ready
- Available immediately
- Lease Rate: \$6.25/sq. ft. NNN
- Asking Price: \$1,475,000 (\$83.19/sq. ft.)



For more information, please contact:

**STEVE GORDON**  
(248) 948 0101  
sgordon@signatureassociates.com

**JASON KELMIGIAN**  
(248) 359 0629  
jkelmigian@signatureassociates.com

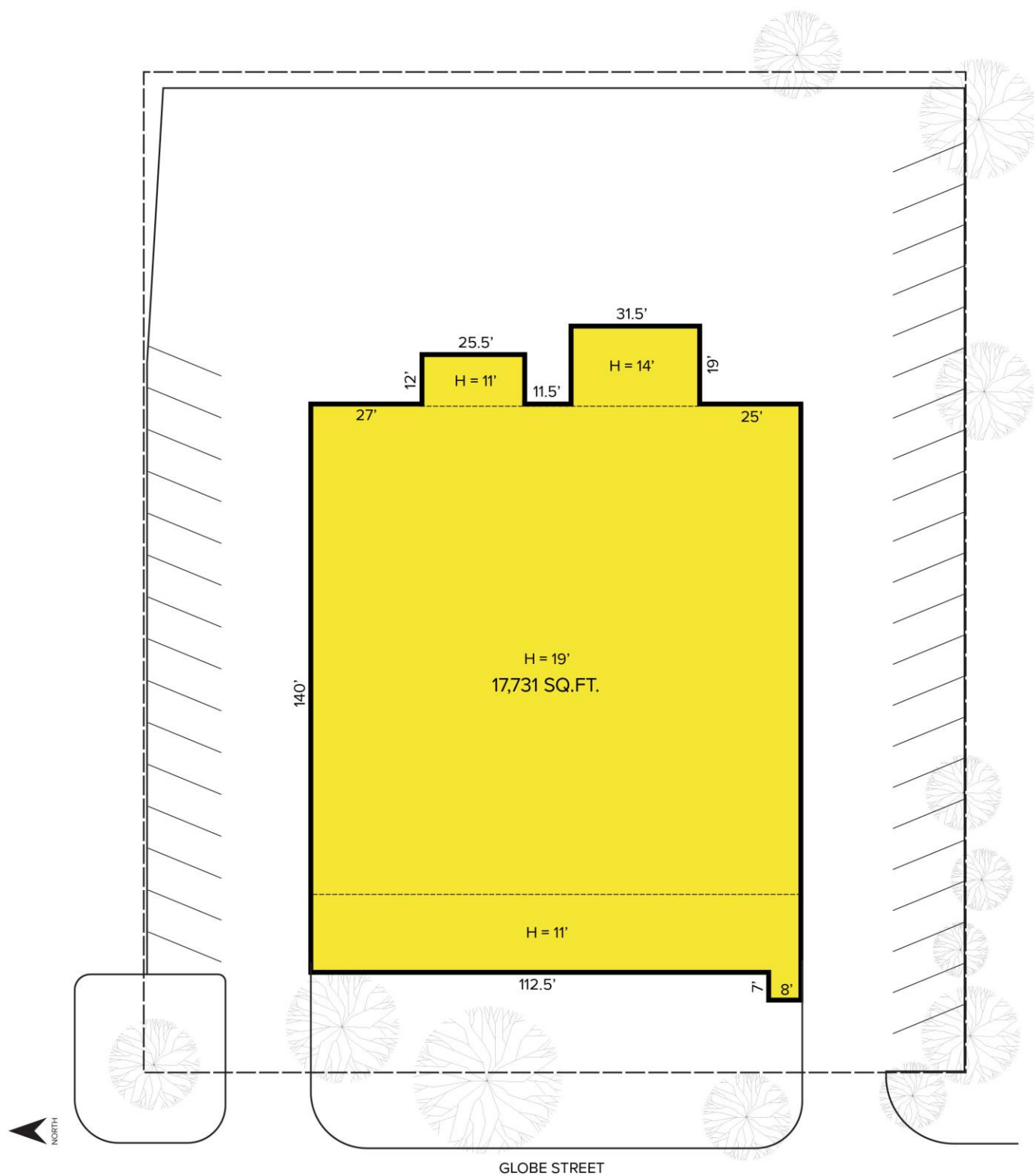
**SIGNATURE ASSOCIATES**  
One Towne Square, Suite 1200  
Southfield, MI 48076  
www.signatureassociates.com

# 12380 Globe Street – Livonia, Michigan

## Industrial For Sale or Lease

17,731  
Square Feet  
AVAILABLE

### Site Plan



For more information, please contact:

**STEVE GORDON**

(248) 948 0101

[sgordon@signatureassociates.com](mailto:sgordon@signatureassociates.com)

**JASON KELMIGIAN**

(248) 359 0629

[jkelmigian@signatureassociates.com](mailto:jkelmigian@signatureassociates.com)

**SIGNATURE ASSOCIATES**

One Towne Square, Suite 1200

Southfield, MI 48076

[www.signatureassociates.com](http://www.signatureassociates.com)



# 12380 Globe Street – Livonia, Michigan

## Industrial For Sale or Lease

17,731  
Square Feet  
AVAILABLE

Aerial



For more information, please contact:

**STEVE GORDON**

(248) 948 0101

[sgordon@signatureassociates.com](mailto:sgordon@signatureassociates.com)

**JASON KELMIGIAN**

(248) 359 0629

[jkelmigian@signatureassociates.com](mailto:jkelmigian@signatureassociates.com)

**SIGNATURE ASSOCIATES**

One Towne Square, Suite 1200

Southfield, MI 48076

[www.signatureassociates.com](http://www.signatureassociates.com)