

# NOW LEASING

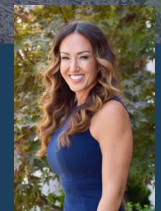


**2356 GOLD MEADOW** RANCHO CORDOVA  
CA 95670

GOLD RIVER OFFICE BUILDING

LOCATED OFF HWY 50  
AND SUNRISE BLVD

**+/- 2,695 SF**



Jayna DeSoiza Byrnes | 916.638.3890 | [jayna@kcmre.com](mailto:jayna@kcmre.com)  
CA DRE #01941191

Brian Rabe | 916.601.0578 | [brabe@kcmre.com](mailto:brabe@kcmre.com)  
CA DRE #01743359

# 2356 GOLD MEADOW

ENTRY

OFFICE | FOR LEASE



Click [MEDIA SITE](#)

# 2356 GOLD MEADOW

LOBBY

OFFICE | FOR LEASE



# 2356 GOLD MEADOW

OFFICE | FOR LEASE

SUITE 160  
ENTRY & BREAK



FRONT ENTRY LOBBY  
RECEPTION

NEWER FINISHES &  
UPGRADES

9 PRIVATE  
OFFICES

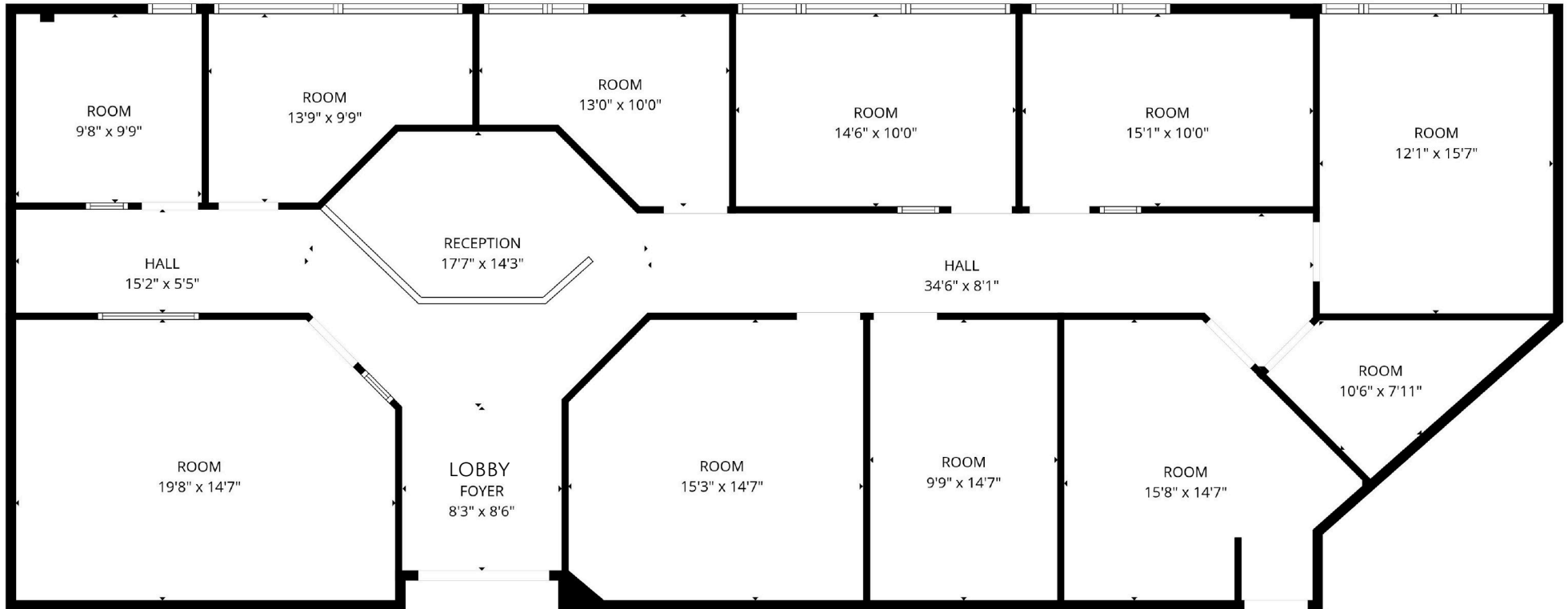
**DETAILS &  
HIGHLIGHTS**

ASKING  
\$1.85 MG

# 2356 GOLD MEADOW

OFFICE | FOR LEASE

SUITE 160  
FLOOR PLAN



Click **3D TOUR**

**LARGE**  
CONFERENCE

**BREAKROOM**  
SERVER ROOM

# 2356 GOLD MEADOW

OFFICE | FOR LEASE

BUILDING  
REAR OVERVIEW



# 2356 GOLD MEADOW

OFFICE | FOR LEASE

BUILDING  
TO SUNRISE BLVD



LOCATED BY  
SUNRISE BLVD IN GOLD RIVER

# 2356 GOLD MEADOW

OFFICE | FOR LEASE

# BUILDING TO HWY 50 AERIAL

