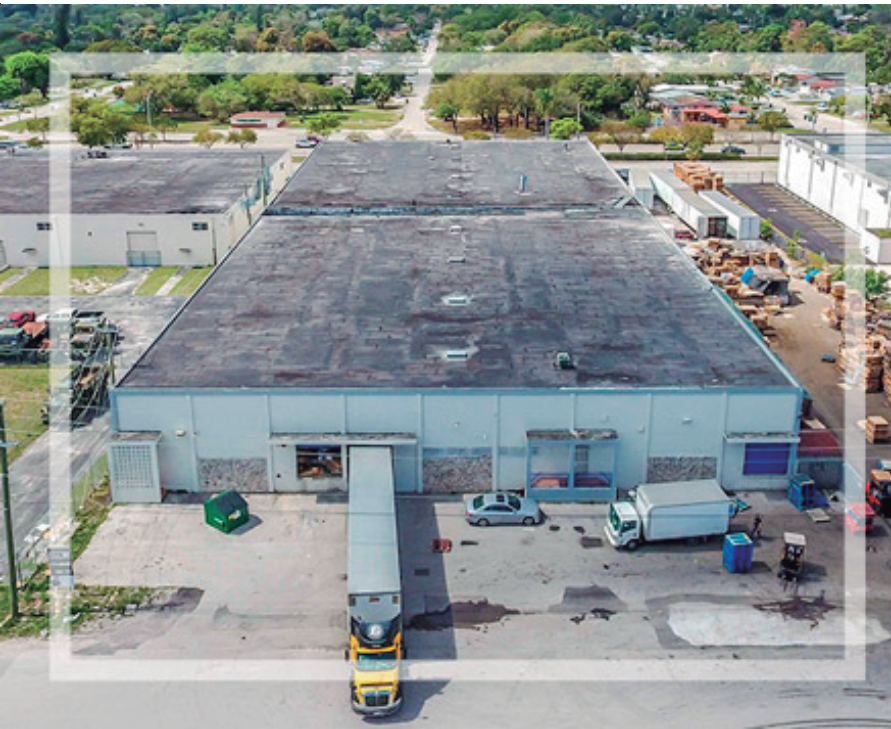


For Sale
or Lease

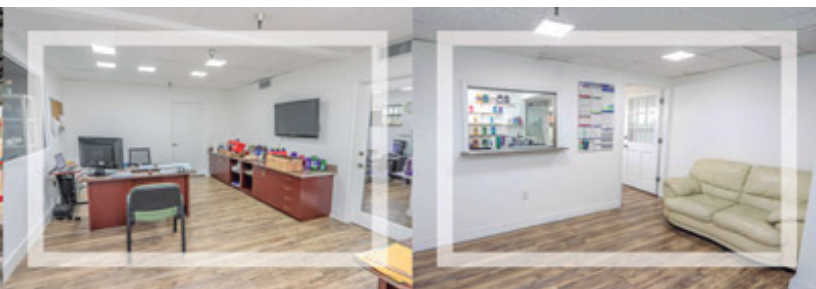
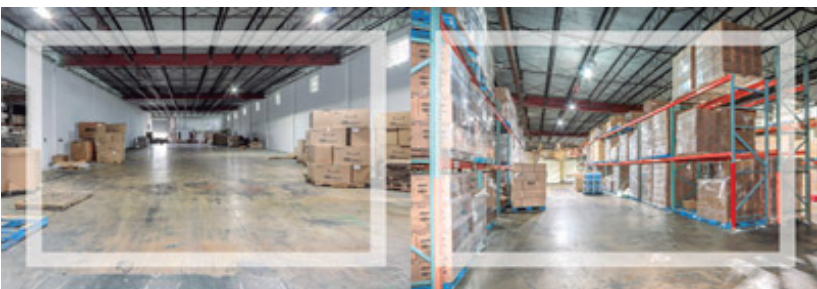
dluxuss
Commercial

**COLDWELL
BANKER**

**GLOBAL
LUXURY**



14940 NW 25th Ct. Opa-Locka, FL 33054



List Price: \$10 | 25,160 SqFt approx.

- Type Property: Industrial
- For Sale: Yes
- For Lease: Yes
- Improve Ht: 1 Story
- Prop Desc: Heavy Industrial Warehouse
- Door Height: Door Ht 10-12'
- Load Doors: 3
- Electric Svc: 220 Volts Power, 440 Volts Power

Business Description

Excellent location in the best Opa Locka street. Warehouse with 25,160 SqFt. and 43,000 SqFt. of land with 400 amps of electrical capacity ideal for manufacture and distribution companies, four loading docks, platform space for mezaninne and paving asphalt in front.

Detailed Information

Highlights

- Excellent location.
- Easy Access to palmetto
- Min. Divisible space of 8,000 SqFt.
- Easy Access to Main Highways.
- Office Space of about 10% of total SqFt.

Listing Details

- Land of 43,000 SqFt.
- Long term lease only.
- Heavy Industrial Manufacture.
- IU-2

DENICE LANDAETA P.A.

Real Estate Professional - Coldwell Banker RE

email: denice@denicelandaeta.com

www.dluxuss.com

2690 Weston Rd Suite #101 Weston, FL 33331

C +1 (954) 914-6339

O (954) 848-3583

