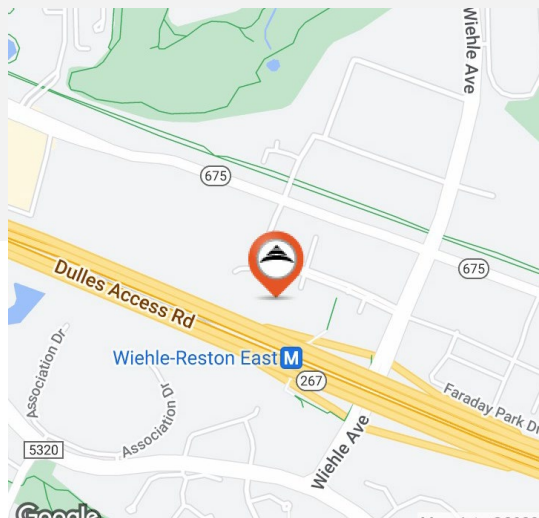




| Space | Size (SF) | Lease Rate |
|-----------|-----------|-------------------------|
| Suite 105 | 3,126 SF | \$19.00/SF Full Service |



Property Highlights

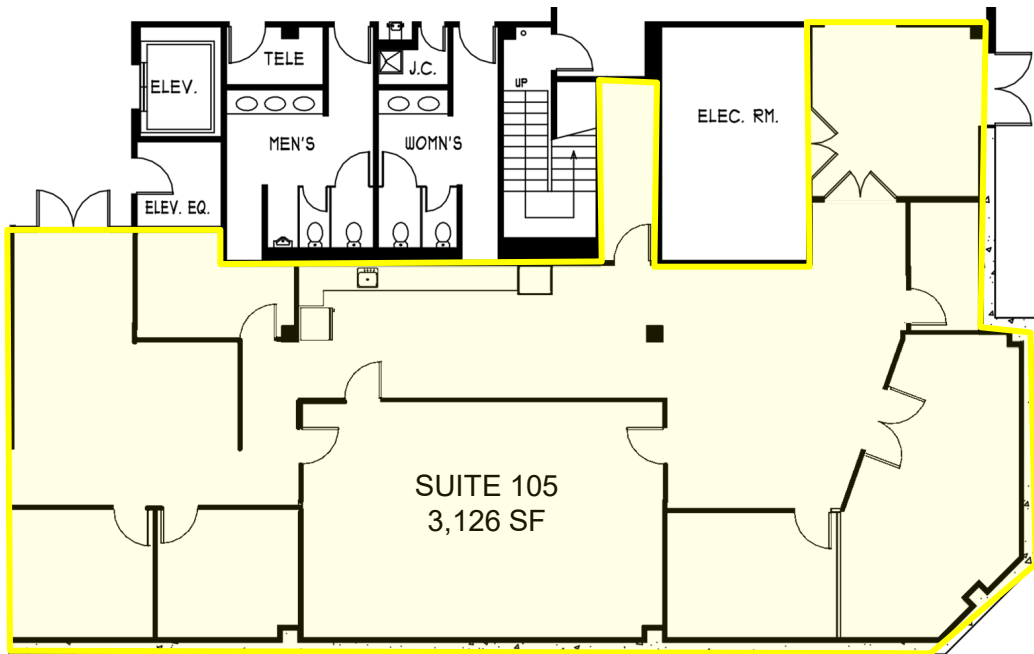
- Building Signage Available
- Steps to Wiehle Ave. Metro
- Next Door to Reston Station Plaza amenities – Starbucks, Founding Farmers, Sweet Leaf, Davio's, Matchbox and others
- Elevator served building
- Home to several government contractors
- No medical uses in building
- Suite 105: Windowless training space and offices. Double door access to loading area. Reception area and kitchen
- Short term lease available

The information above was furnished to us by sources we believe to be reliable, but no warranty or representation is made to its accuracy. It is your responsibility to independently confirm its accuracy and completeness. This offering is subject to correction or errors and omissions, change of pricing, prior to sale/lease or withdrawal from the market, without notice.

Ellie Bechtle
 703.435.4007 x 107
 ebechtle@veritycommercial.com

David Colvin
 703.435.4007 x 115
 dcolvin@veritycommercial.com

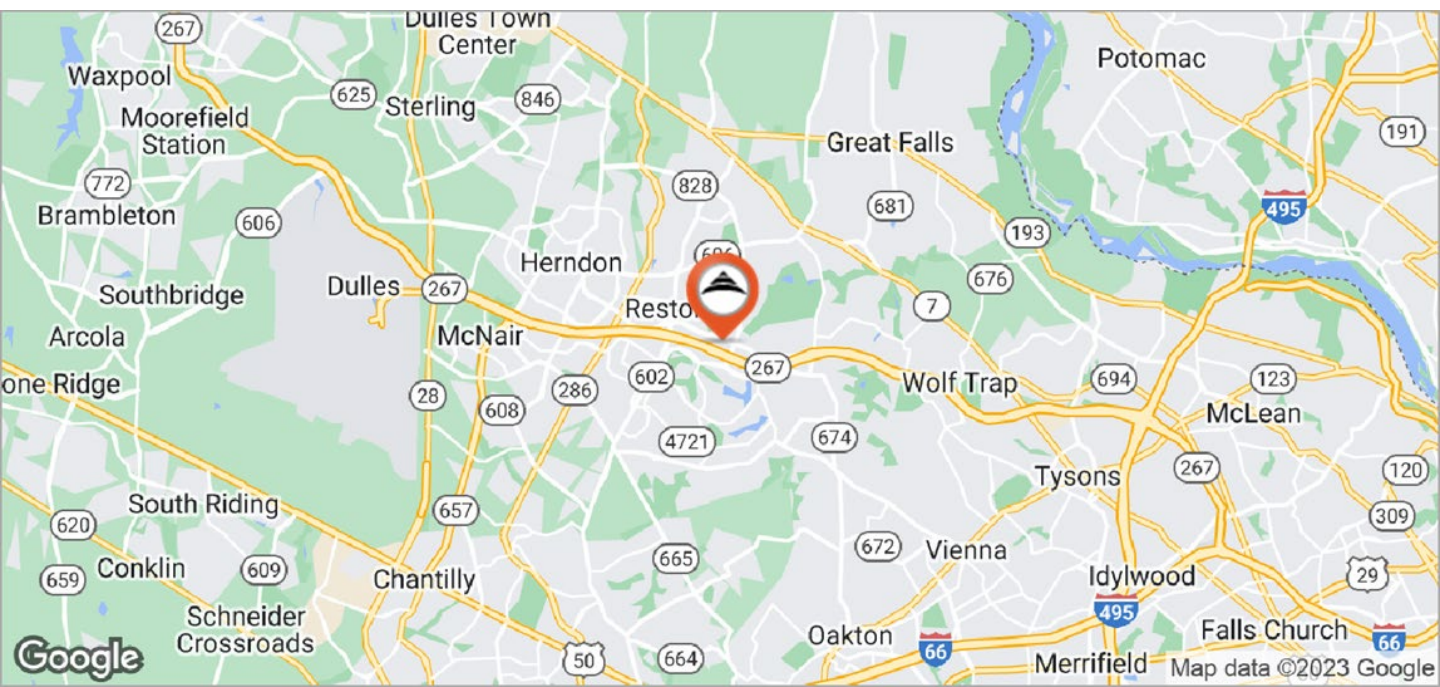
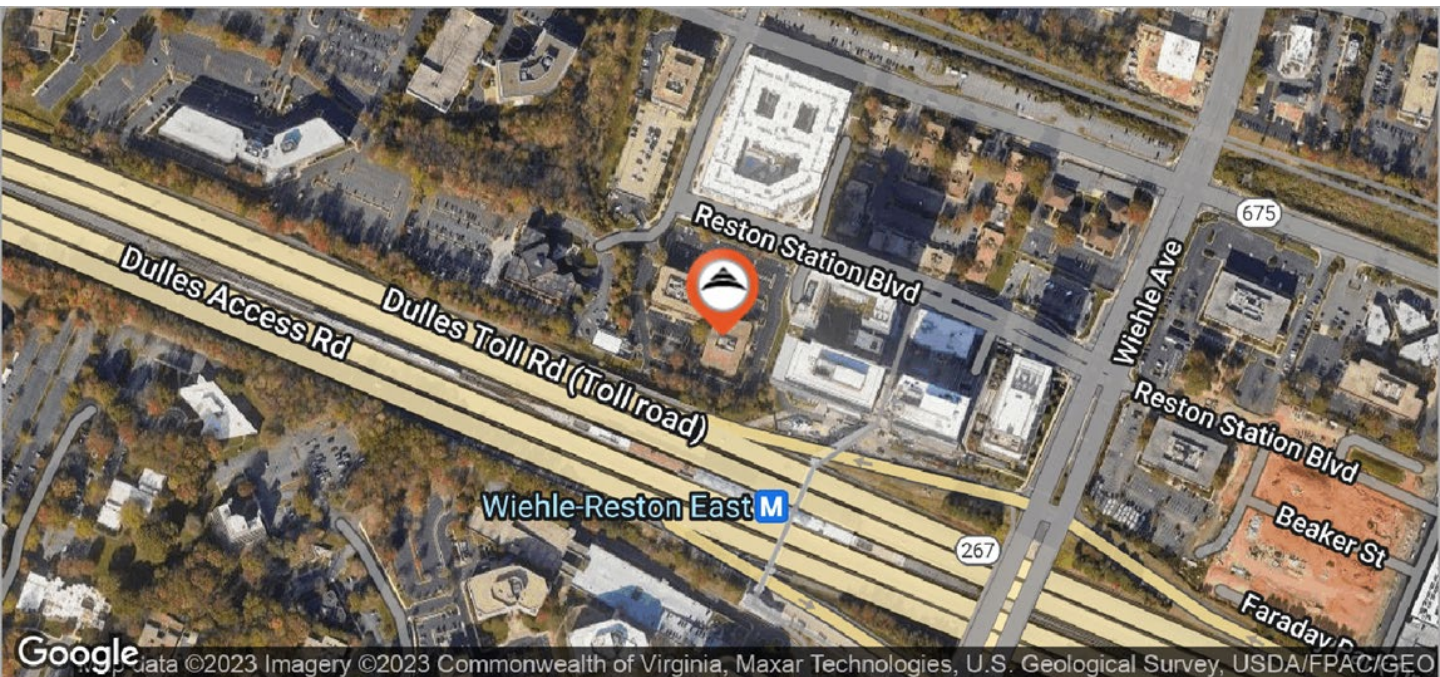
Floor Plan Suite 105



The information above was furnished to us by sources we believe to be reliable, but no warranty or representation is made to its accuracy. It is your responsibility to independently confirm its accuracy and completeness. This offering is subject to correction or errors and omissions, change of pricing, prior to sale/lease or withdrawal from the market, without notice.

Ellie Bechtle
 703.435.4007 x 107
 ebechtle@veritycommercial.com

David Colvin
 703.435.4007 x 115
 dcolvin@veritycommercial.com



The information above was furnished to us by sources we believe to be reliable, but no warranty or representation is made to its accuracy. It is your responsibility to independently confirm its accuracy and completeness. This offering is subject to correction or errors and omissions, change of pricing, prior to sale/lease or withdrawal from the market, without notice.

Ellie Bechtle
 703.435.4007 x 107
 ebechtle@veritycommercial.com

David Colvin
 703.435.4007 x 115
 dcolvin@veritycommercial.com