

4833 NORTH EDGEWOOD DRIVE

DRASTIC RATE REDUCTION!

FOR LEASE



PROPERTY DETAILS

4833 North Edgewood Drive, Provo, Utah 84604

- 10,000 SF available- Two floors of 5,000 SF each
- Tenant can occupy 5,000 SF- 10,000 SF
- Stand alone building
- High end finishes
- \$23.50 Modified Gross for full building lease
- Large training room, large bullpen, beautiful conference room, mix of c-level offices and large offices
- The location within The Shops at Riverwoods shopping center provides numerous walkable amenities for dining and shopping
- Beautiful views throughout of Mount Timpanogos
- Prime location for Provo's new tech hub located within the River District

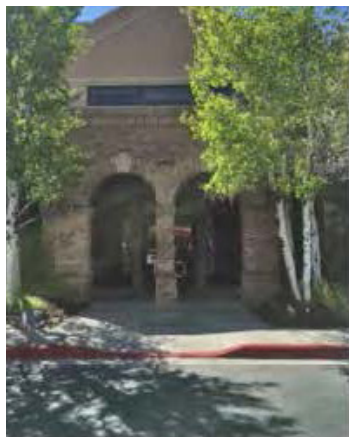


CODY BLACK
cblack@newmarkmw.com
direct 385.233.9141
[View Profile](#)

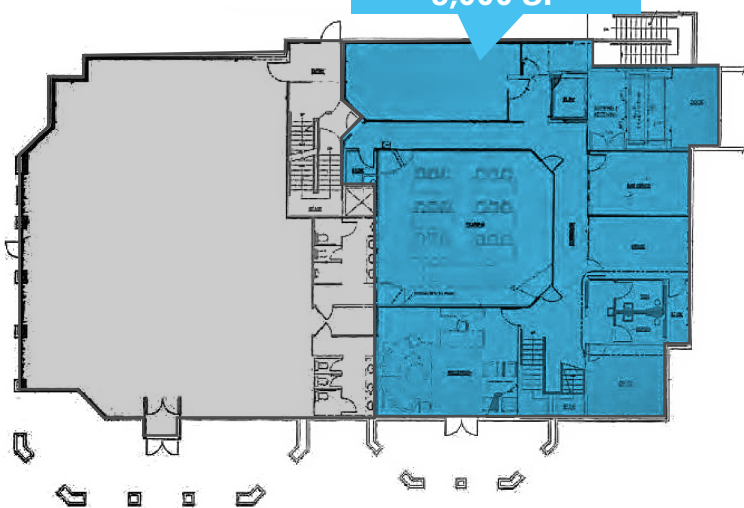
SHAD WEBB
swebb@newmarkmw.com
direct 435.459.0212
[View Profile](#)

**FULL SERVICE
COMMERCIAL REAL ESTATE**
2015 West Grove Parkway, Suite J
Pleasant Grove, UT 84062
Office 385.233.9140
www.newmarkmw.com

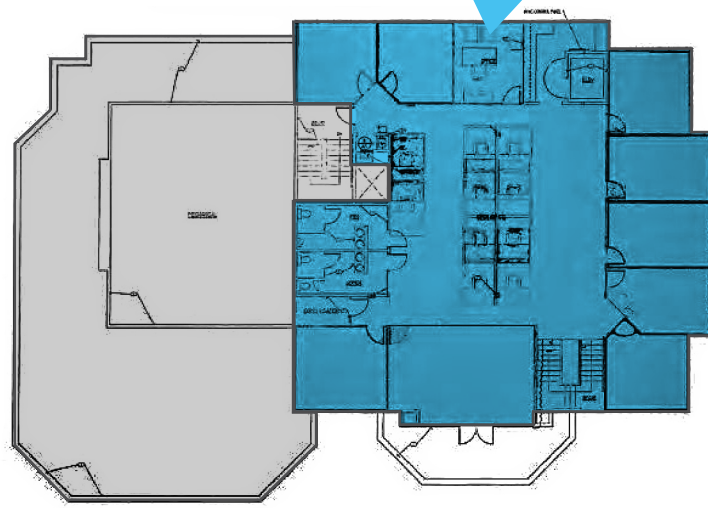
4833 NORTH EDGEWOOD DRIVE



AVAILABLE
1st FLOOR
5,000 SF



AVAILABLE
2ND FLOOR
5,000 SF



CODY BLACK
cblack@newmarkmw.com
direct 385.233.9141
[View Profile](#)

SHAD WEBB
swebb@newmarkmw.com
direct 435.459.0212
[View Profile](#)

**FULL SERVICE
COMMERCIAL REAL ESTATE**
2015 West Grove Parkway, Suite J
Pleasant Grove, UT 84062
Office 385.233.9140
www.newmarkmw.com



CODY BLACK
 cblack@newmarkmw.com
 direct 385.233.9141
[View Profile](#)

SHAD WEBB
 swebb@newmarkmw.com
 direct 435.459.0212
[View Profile](#)

**FULL SERVICE
 COMMERCIAL REAL ESTATE**
 2015 West Grove Parkway, Suite J
 Pleasant Grove, UT 84062
 Office 385.233.9140
www.newmarkmw.com