

HANOVER

WEYMOUTH



WEYMOUTH, MA

1325 WASHINGTON STREET

UP TO 4,188 AVAILABLE FOR LEASE



PROJECT DETAILS

1325 WASHINGTON STREET • ± 4,188 SF AVAILABLE

AVAILABLE SPACE: 4,188 SF

CITY, STATE: Weymouth, MA

LEASE RATE: Call For Pricing

PROPERTY HIGHLIGHTS:

- 270 unit multifamily development with highly visible retail space on Route 53
- Food and Beverage user optionality; Grease trap and ventilation shaft included.
- 21 dedicated parking spaces
- Expected delivery in May of 2024
- Up to 4,188 SF with subdivision optionality

SITE RENDERING



NEARBY RETAIL



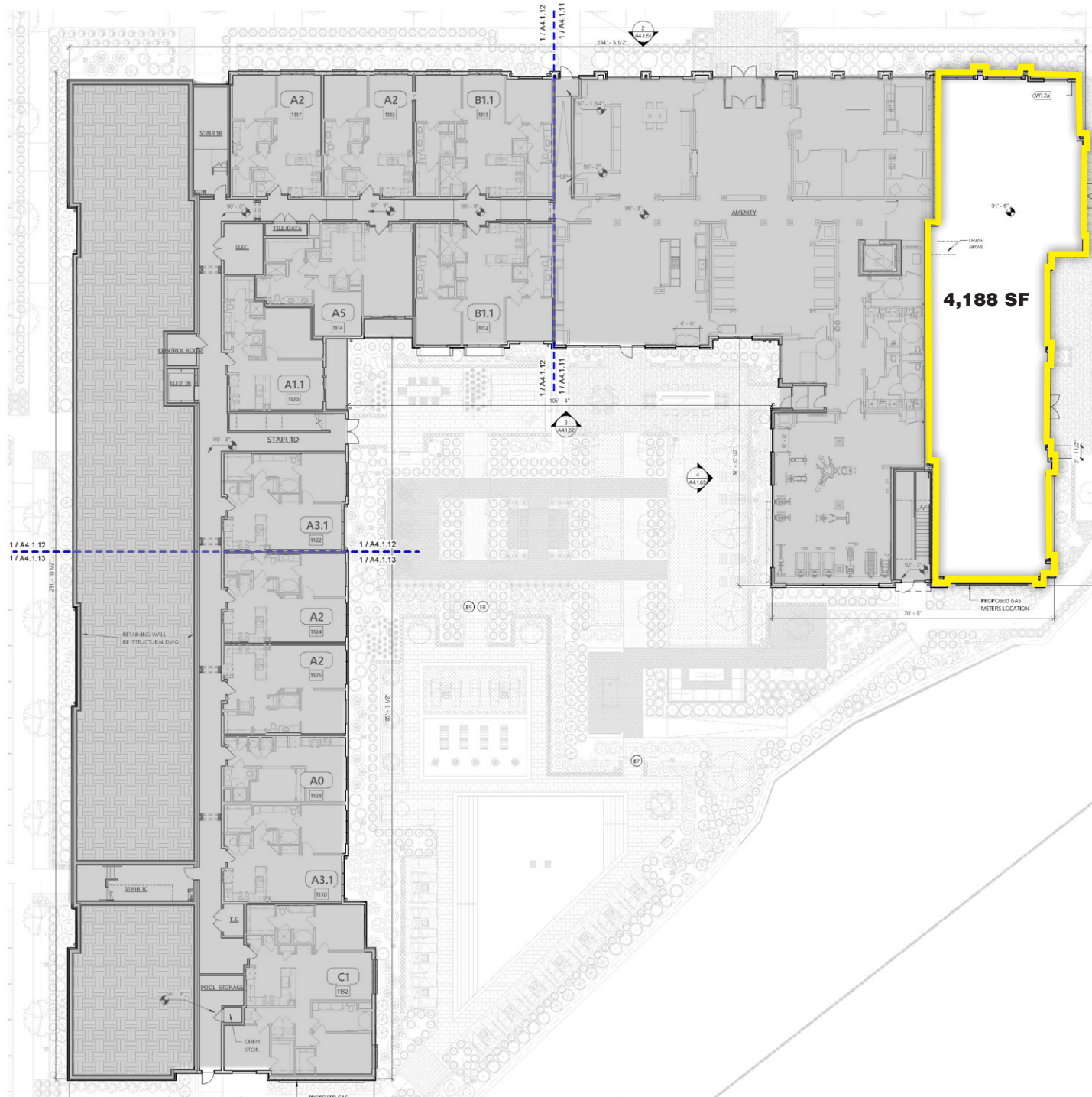
DERBY ST. SHOPS:



2024 DEMOGRAPHICS	1 MILE	3 MILES	5 MILES
TOTAL POPULATION	7,181	63,644	163,911
DAYTIME POPULATION	9,058	67,767	176,814
MEDIAN HH INCOME	\$72,780	\$103,767	\$104,453

SITE PLAN

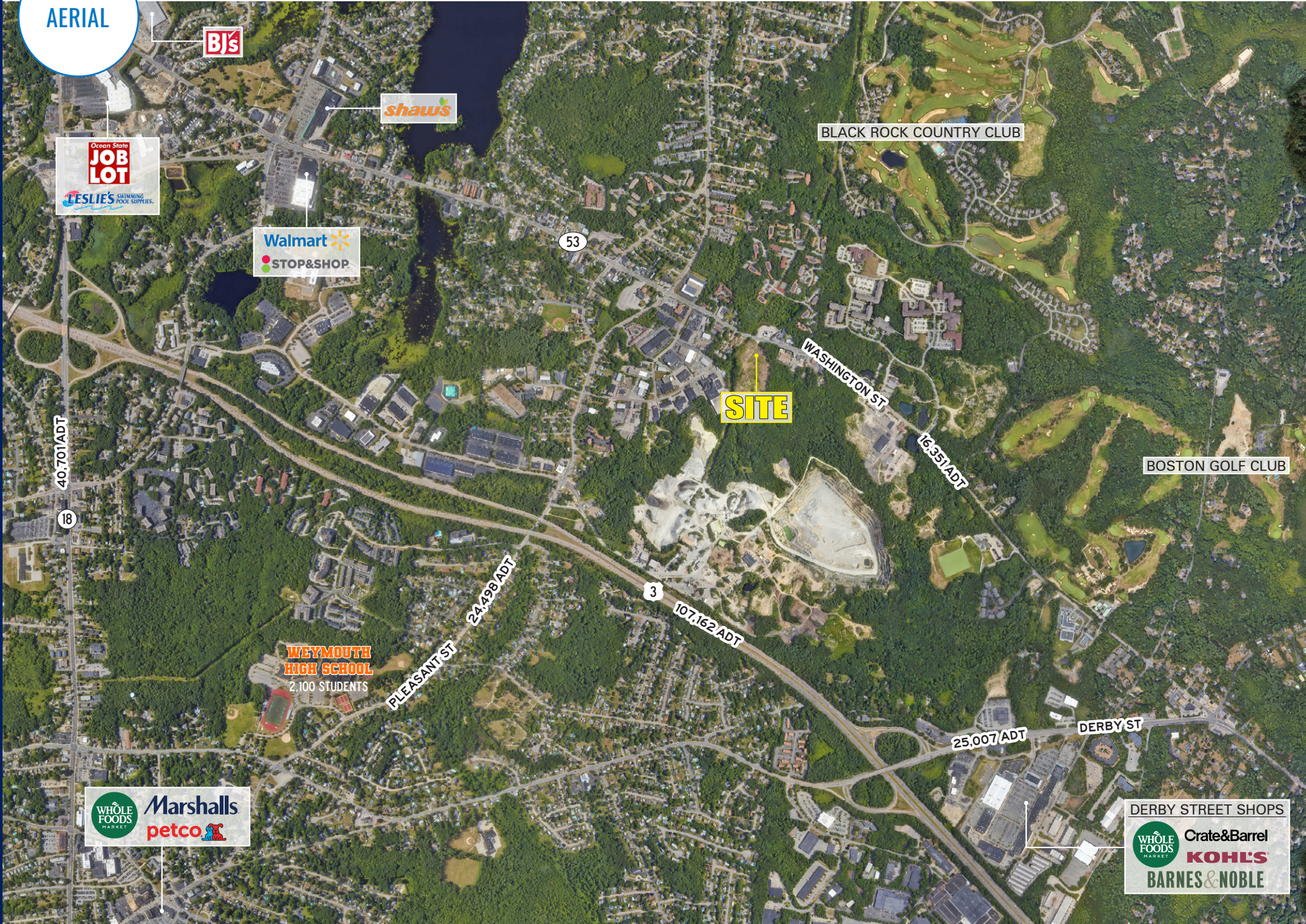
1325 WASHINGTON STREET • ± 4,188 SF AVAILABLE



Washington Street / Route 53

1325 WASHINGTON STREET • ± 4,188 SF AVAILABLE

AERIAL



BJ's

shaws

Ocean State
JOB LOT
LESLIE'S SWIMMING POOL SUPPLIES

Walmart
STOP & SHOP

BLACK ROCK COUNTRY CLUB

53

SITE

WASHINGTON ST

16,331 ADT

BOSTON GOLF CLUB

40,701 ADT

18

WEYMOUTH HIGH SCHOOL
2,100 STUDENTS

PLEASANT ST
24,498 ADT

3

107,162 ADT

25,007 ADT

DERBY ST

WHOLE FOODS MARKET
Marshalls
petco

DERBY STREET SHOPS
WHOLE FOODS MARKET
Crate&Barrel
KOHL'S
BARNES & NOBLE

ZOOM
AERIAL



WEYMOUTH, MA

1325 WASHINGTON STREET

UP TO 4,188 SF AVAILABLE | RETAIL

SAM VARSANO

617.369.5908
SVARSANO@ATLANTICRETAIL.COM

PETER CONSIDINE

617.369.5959
PCONSIDINE@ATLANTICRETAIL.COM



ALBANY

ATLANTA

BOSTON

THE PRUDENTIAL CENTER
BOSTON, MA 02199
617.239.3600

CHARLOTTE

LOS ANGELES

NEW YORK CITY

ORLANDO

PITTSBURGH

WEST PALM BEACH

WWW.ATLANTICRETAIL.COM

 [LINKEDIN.COM/COMPANY/ATLANTIC-RETAIL-PROPERTIES](https://www.linkedin.com/company/atlantic-retail-properties)

 [INSTAGRAM.COM/ATLANTIC_RETAIL/](https://www.instagram.com/atlantic_retail/)

 REALTY
RESOURCES

 CHAINLINKS
RETAIL ADVISORS