

**32535-32553 SCHOOLCRAFT RD
#32547
LIVONIA, MICHIGAN**

**INDUSTRIAL FOR SUBLEASE
6,900 Square Feet Available**



**SIGNATURE
ASSOCIATES**
KNOW SIGNATURE | KNOW RESULTS



PROPERTY FEATURES

- 6,900 square feet available
- 1,300 square feet office
- 16' clear height
- (2) 12' x 12' grade level doors
- Located on 2.120 acres
- Immediate occupancy
- Two shop bays
- Updated open office space with LED lights, two new restrooms and great natural lighting
- Sublease through March 27, 2029
- Lease Rate: \$13.00/sq. ft. Gross



For more information, please contact:

CHRIS D'ANGELO
(248) 948 0109
cdangelo@signatureassociates.com

DRAKE FILIPPIS
(248) 799 3161
dfilippis@signatureassociates.com

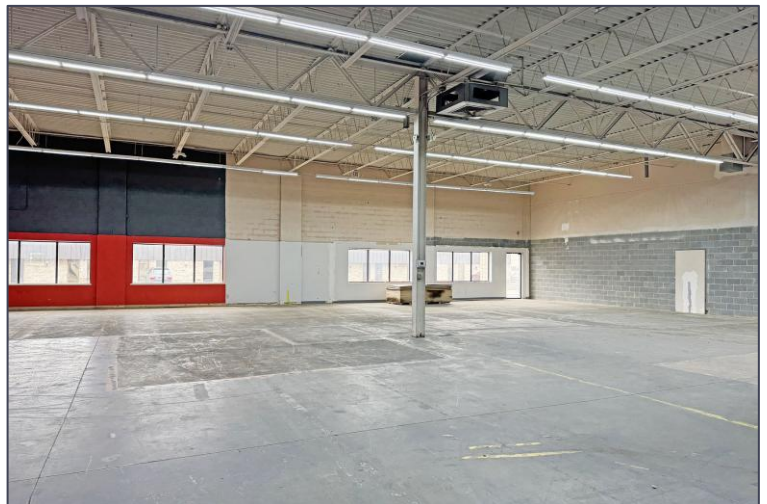
SIGNATURE ASSOCIATES
One Towne Square, Suite 1200
Southfield, MI 48076
www.signatureassociates.com

32535-32553 Schoolcraft Road - Livonia, Michigan

Industrial For Sublease

6,900
Square Feet
AVAILABLE

Interior Photos



For more information, please contact:

CHRIS D'ANGELO
(248) 948 0109
cdangelo@signatureassociates.com

DRAKE FILIPPIS
(248) 799 3161
dfilippis@signatureassociates.com

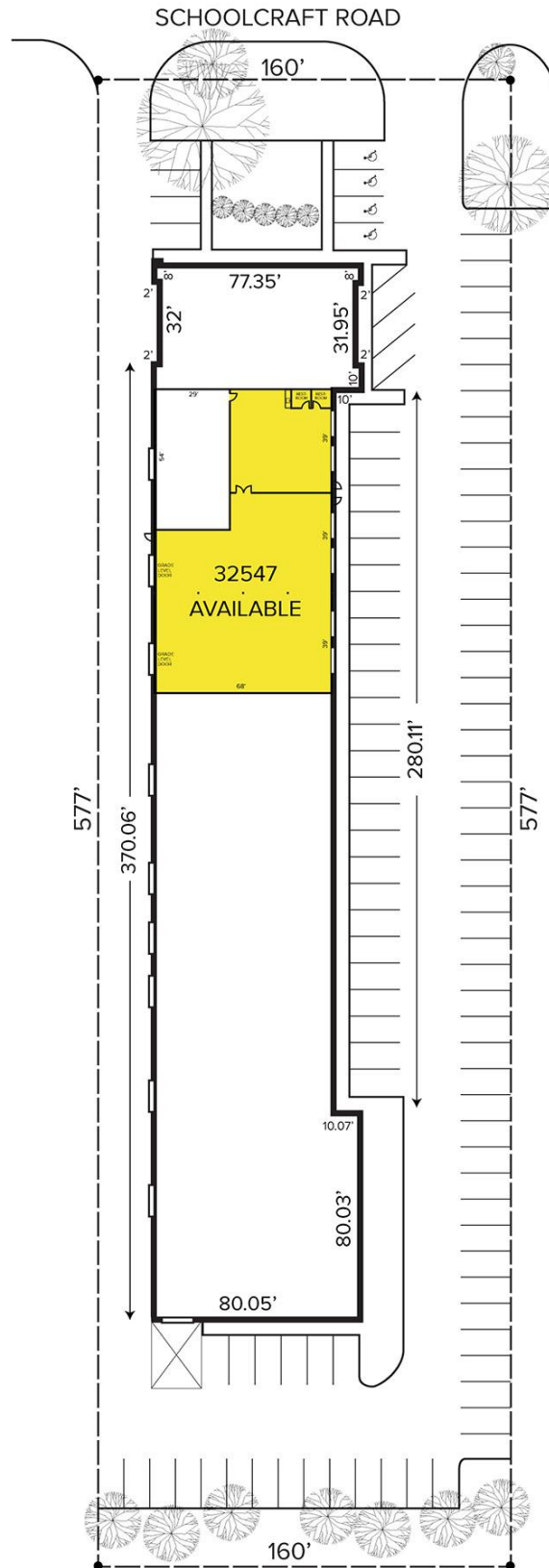
SIGNATURE ASSOCIATES
One Towne Square, Suite 1200
Southfield, MI 48076
www.signatureassociates.com

32535-32553 Schoolcraft Road - Livonia, Michigan

Industrial For Sublease

6,900
Square Feet
AVAILABLE

Site Plan



For more information, please contact:

CHRIS D'ANGELO
(248) 948 0109
cdangelo@signatureassociates.com

DRAKE FILIPPIS
(248) 799 3161
dfilippis@signatureassociates.com

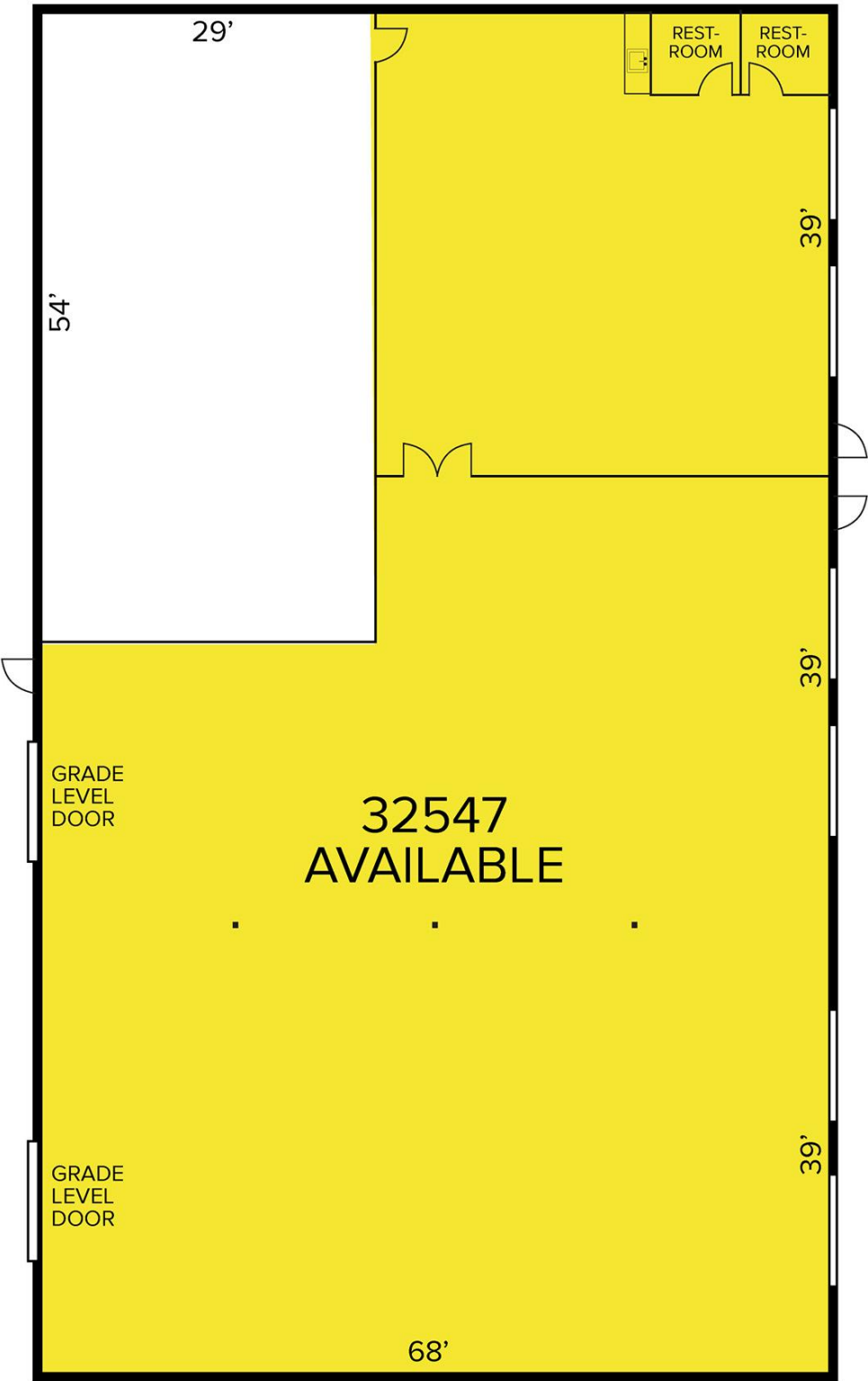
SIGNATURE ASSOCIATES
One Towne Square, Suite 1200
Southfield, MI 48076
www.signatureassociates.com

32535-32553 Schoolcraft Road - Livonia, Michigan

Industrial For Sublease

6,900
Square Feet
AVAILABLE

Floor Plan



For more information, please contact:

CHRIS D'ANGELO
(248) 948 0109
cdangelo@signatureassociates.com

DRAKE FILIPPIS
(248) 799 3161
dfilippis@signatureassociates.com

SIGNATURE ASSOCIATES
One Towne Square, Suite 1200
Southfield, MI 48076
www.signatureassociates.com

Information is subject to verification and no liability for errors or omissions is assumed. Price is subject to change and listing withdrawal.

32535-32553 Schoolcraft Road - Livonia, Michigan

Industrial For Sublease

6,900
Square Feet
AVAILABLE

Aerial



For more information, please contact:

CHRIS D'ANGELO
(248) 948 0109
cdangelo@signatureassociates.com

DRAKE FILIPPIS
(248) 799 3161
dfilippis@signatureassociates.com

SIGNATURE ASSOCIATES
One Towne Square, Suite 1200
Southfield, MI 48076
www.signatureassociates.com