

# 100 DAVIDSON AVE SOMERSET, NEW JERSEY



FLOOR	# OF UNITS	MIN SF	MAX SF	TOTAL	MAX CONTIGOUS	MAX CONT. AVAILABLE
1	9	836	2392	12785	6021	2392
2	7	1199	10368	25960	25960	25960
3	10	1393	4463	25960	25960	25960

- ❖ 65,000 SF MODERN BUILDING WITH ACCESS CONTROL
- ❖ MULTIPLE SUITES WITH DIFFERENT FLOOR PLANS
- ❖ 800 SF – 26,000 SF CONTIGOUS SPACE AVAILABLE
- ❖ 180+ PARKING LOTS
- ❖ PRIME LOCATION – FIRST BUILDING OFF I 287N (EXIT 10)
  - ❑ DAVIDSON AVENUE X EASTON AVE;
  - ❑ 0.25 MILES FROM I-287N

CONTACT  
FOR LEASING

IMRAN: +1 732 496 8440 / MOHAN: +1 609 945 7474  
Leasing@ONYXRLT.com

**100** DAVIDSON AVE  
SOMERSET, NEW JERSEY



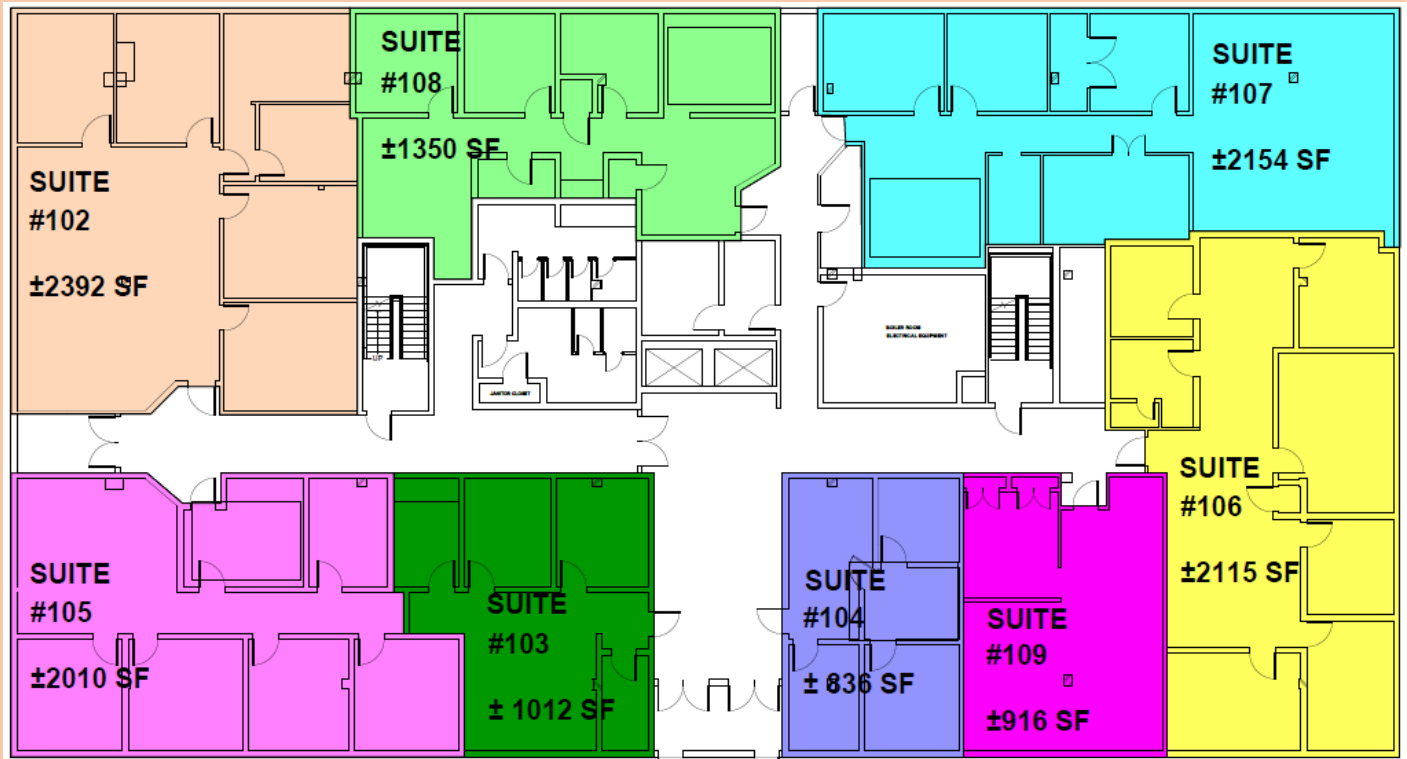
**Entrance**

**CONTACT  
FOR LEASING**

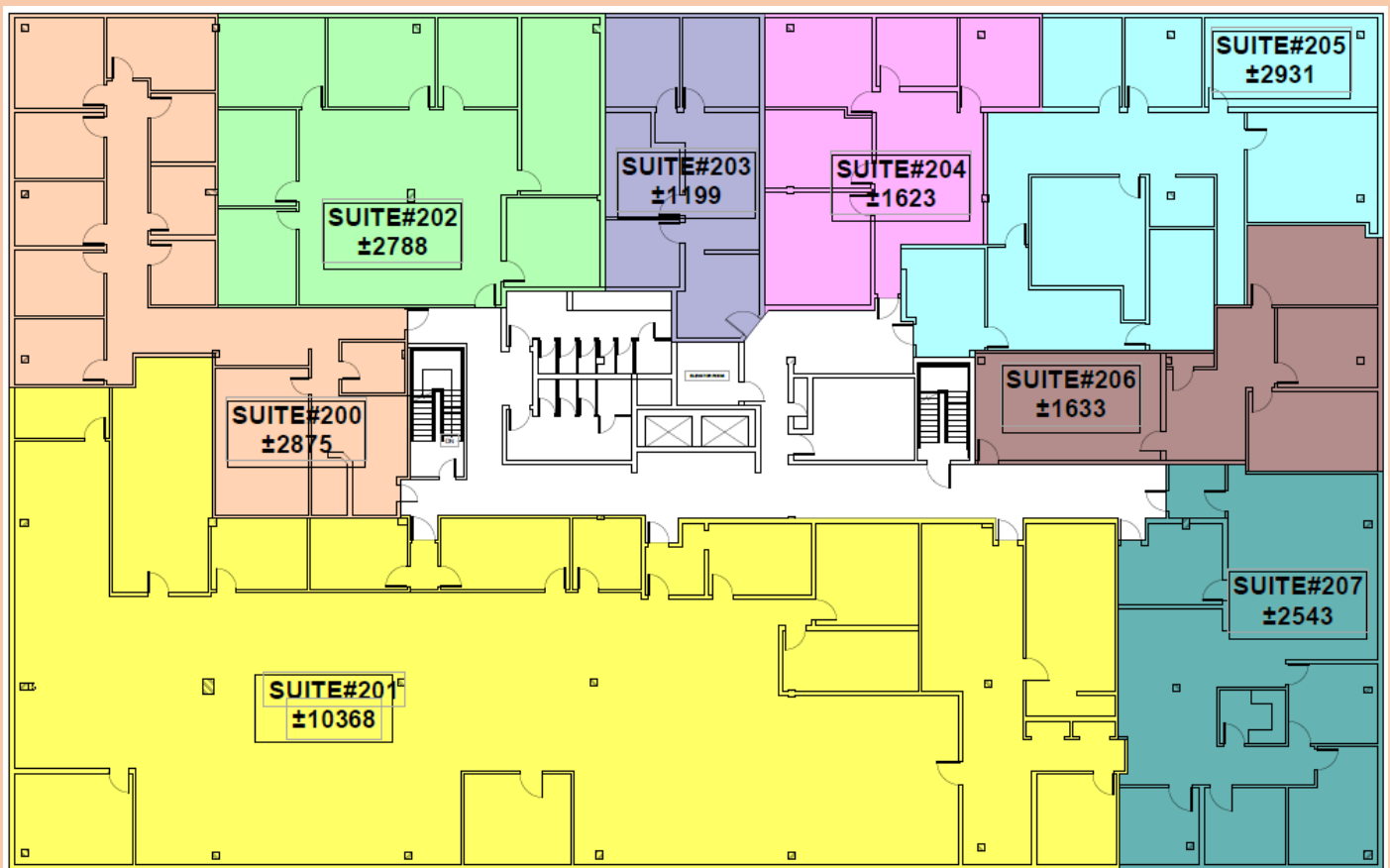
**IMRAN: +1 732 496 8440 / MOHAN: +1 609 945 7474**  
**Leasing@ONYXRLT.com**



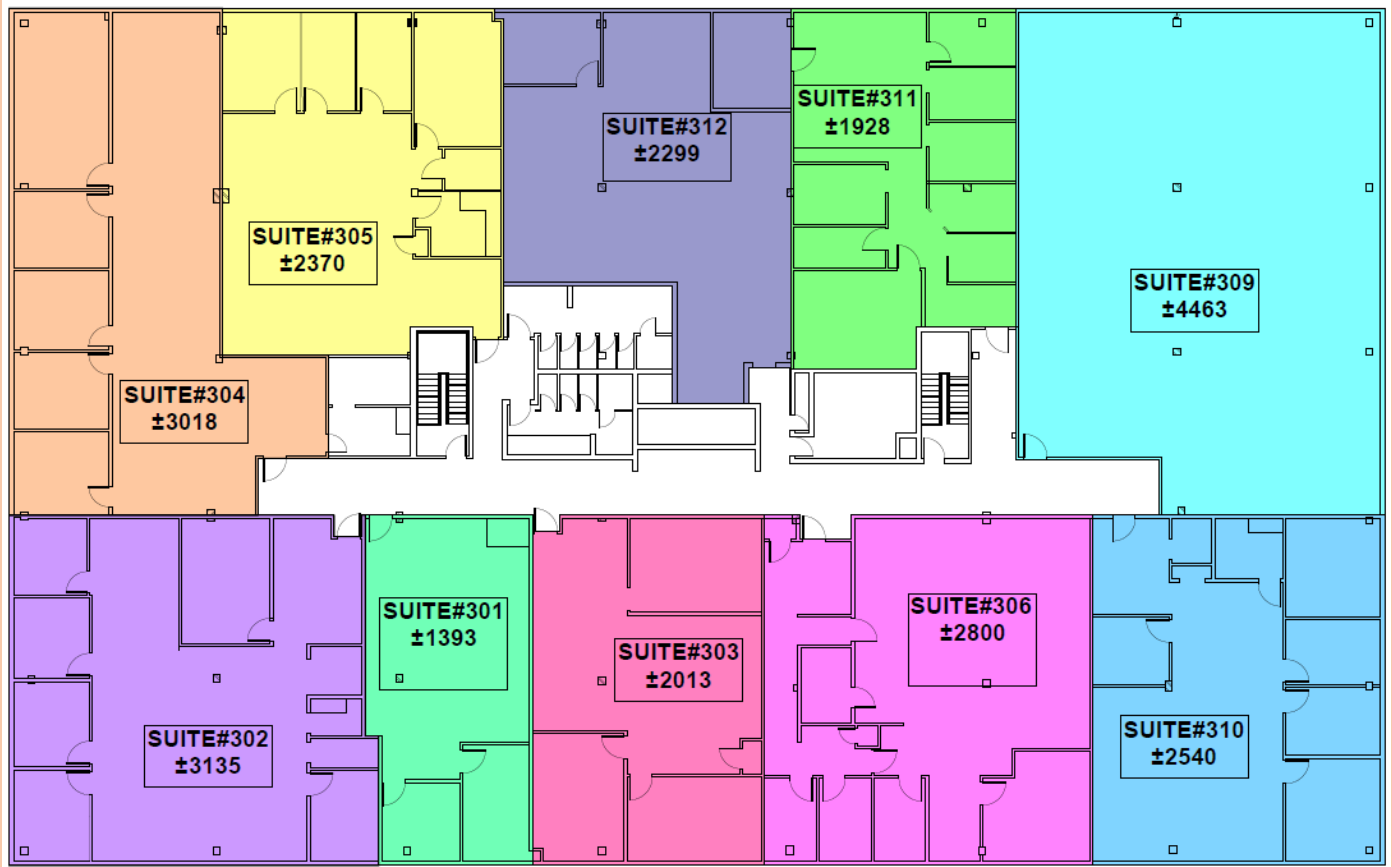
**Modern Lobby with Double Elevators**



FIRST FLOOR PLAN



SECOND FLOOR PLAN



**THIRD FLOOR PLAN**



**SAMPLE OFFICE SPACE**

CONTACT  
FOR LEASING

IMRAN: +1 732 496 8440 / MOHAN: +1 609 945 7474  
Leasing@ONYXRLT.com