



Palma Ceia Plaza

2506-2510 S Macdill Ave, Tampa, FL 33629

R

Lauren Hayes

Reaves Management Group
611 Wilshire Blvd, Los Angeles, CA 90017
support@reavesmg.com
(813) 297-5320

[https://reavesmg.managebuilding.com/
Resident/public/home](https://reavesmg.managebuilding.com/Resident/public/home)



Palma Ceia Plaza

\$40.00 /SF/YR

Palma Ceia Plaza is a boutique retail and professional plaza along S MacDill Avenue in South Tampa's Palma Ceia neighborhood, offering upgraded street-front suites, strong visibility, and convenient on-site parking....

- Prime South Tampa Location
- Recently Renovated
- Strong Street Presence
- 35 On-Site Parking Spaces

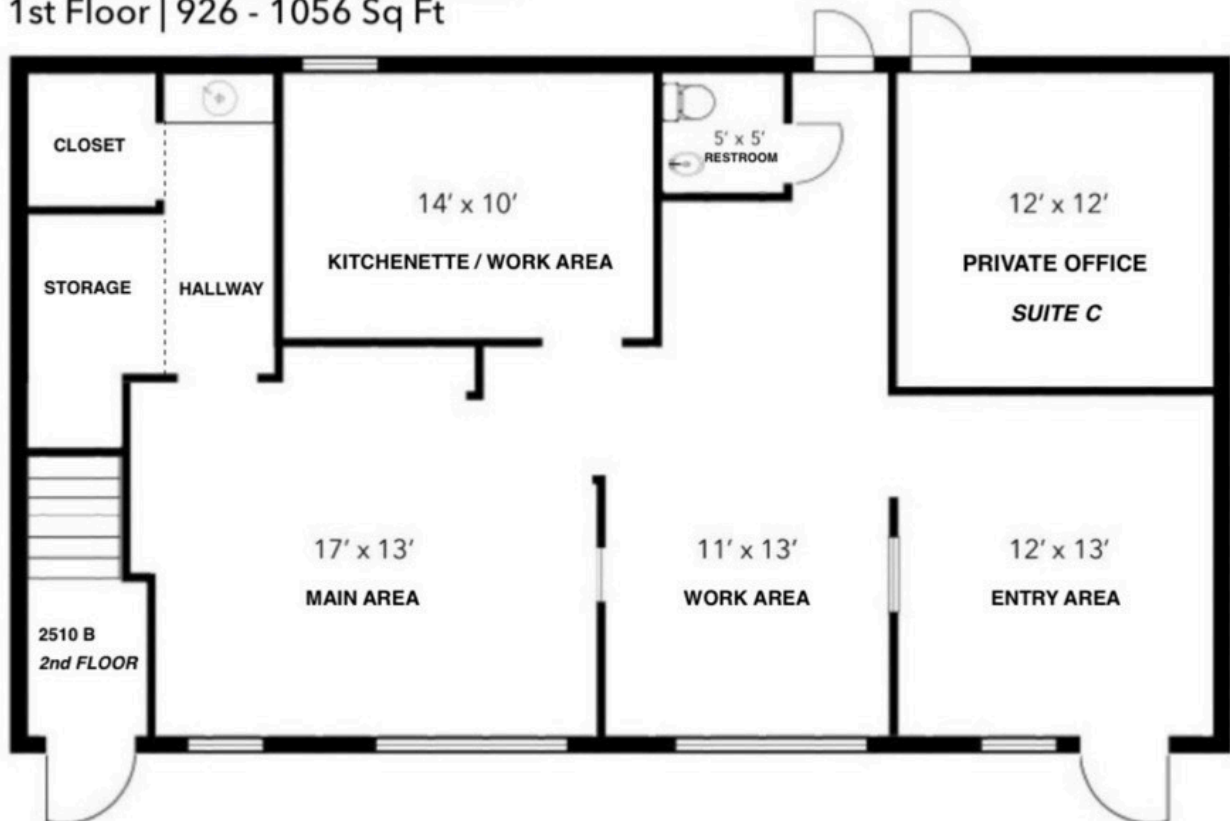


Rental Rate:	\$40.00 /SF/YR
Min. Divisible:	926 SF
Property Type:	Retail
Property Subtype:	Storefront Retail/Office
Gross Leasable Area:	9,560 SF
Year Built:	1949
Walk Score ®:	87 (Very Walkable)
Transit Score ®:	30 (Some Transit)
Rental Rate Mo:	\$3.33 /SF/MO

1

1st Floor Ste 2510 S MacDill - A

Space Available	926 - 1,056 SF
Rental Rate	\$40.00 /SF/YR
Date Available	February 01, 2026
Service Type	Triple Net (NNN)
Space Type	New
Space Use	Office/Retail
Lease Term	5 - 7 Years

**2510 S MacDill Ave, Ste A**
1st Floor | 926 - 1056 Sq Ft



2506-2510 S Macdill Ave, Tampa, FL 33629

Palma Ceia Plaza is a boutique retail and professional plaza along S MacDill Avenue in South Tampa's Palma Ceia neighborhood, offering upgraded street-front suites, strong visibility, and convenient on-site parking.