

FOR LEASE

2700 W. CANTON ROAD

EDINBURG, TX 78539



CONTACT INFORMATION:

Carlos Marquez, SIOR

Senior Director

+1 210 896 2525

carlos.marquez@cushwake.com

Sergio Acosta

Senior Director

+1 210 305 4284

sergio.acosta@cushwake.com

**18,180 SF ON
2.15 ACRES**

Industrial Cold Storage Facility

BUILDING INFORMATION



±18,180 SF

BUILDING SIZE

±2.15

ACRES

14,880 SF

COOLER

3,300 SF

Office

1985

Built In

2016

Retrofitted In

11

Dock High Doors

1

Drive In Door

12 to 14'

Clear Height

LED

Lighting

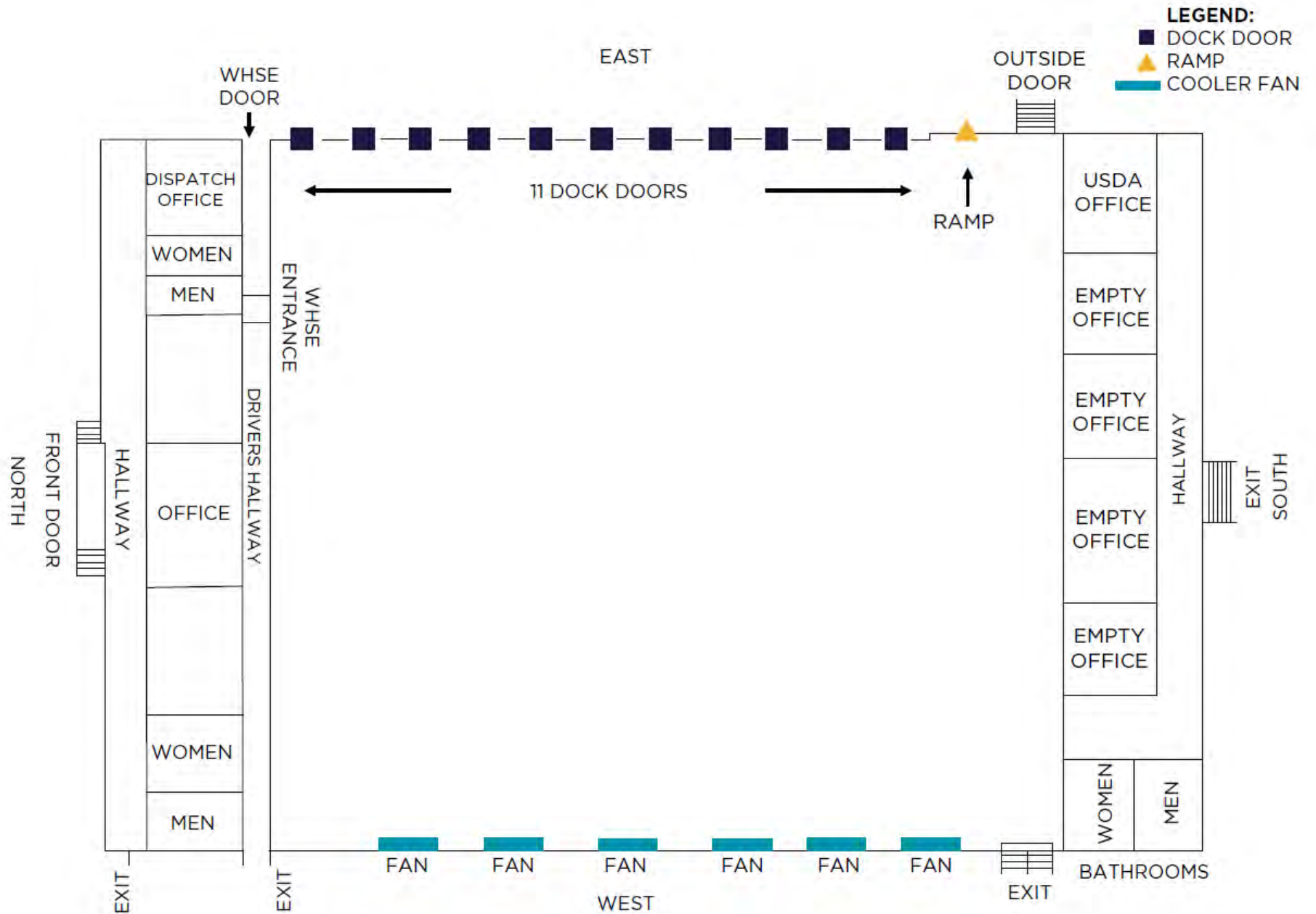
3-phase

Power

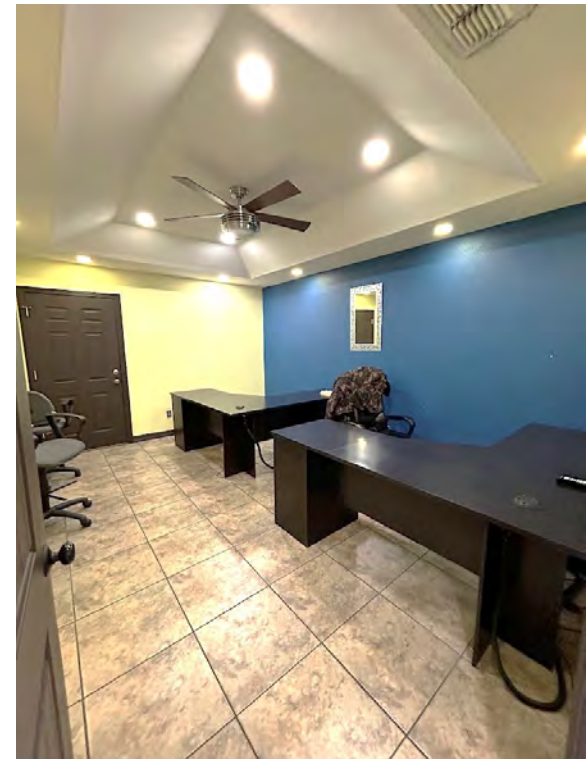
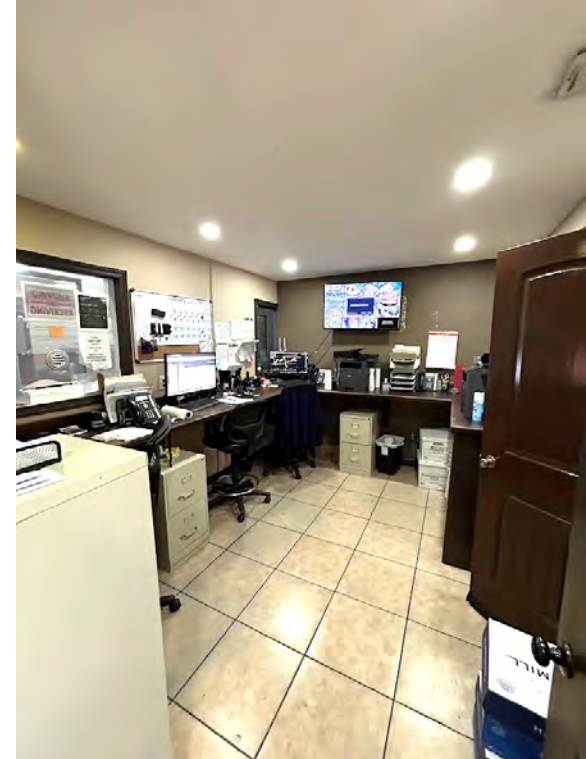
General Industrial

Zoning

PROPERTY FLOOR PLAN



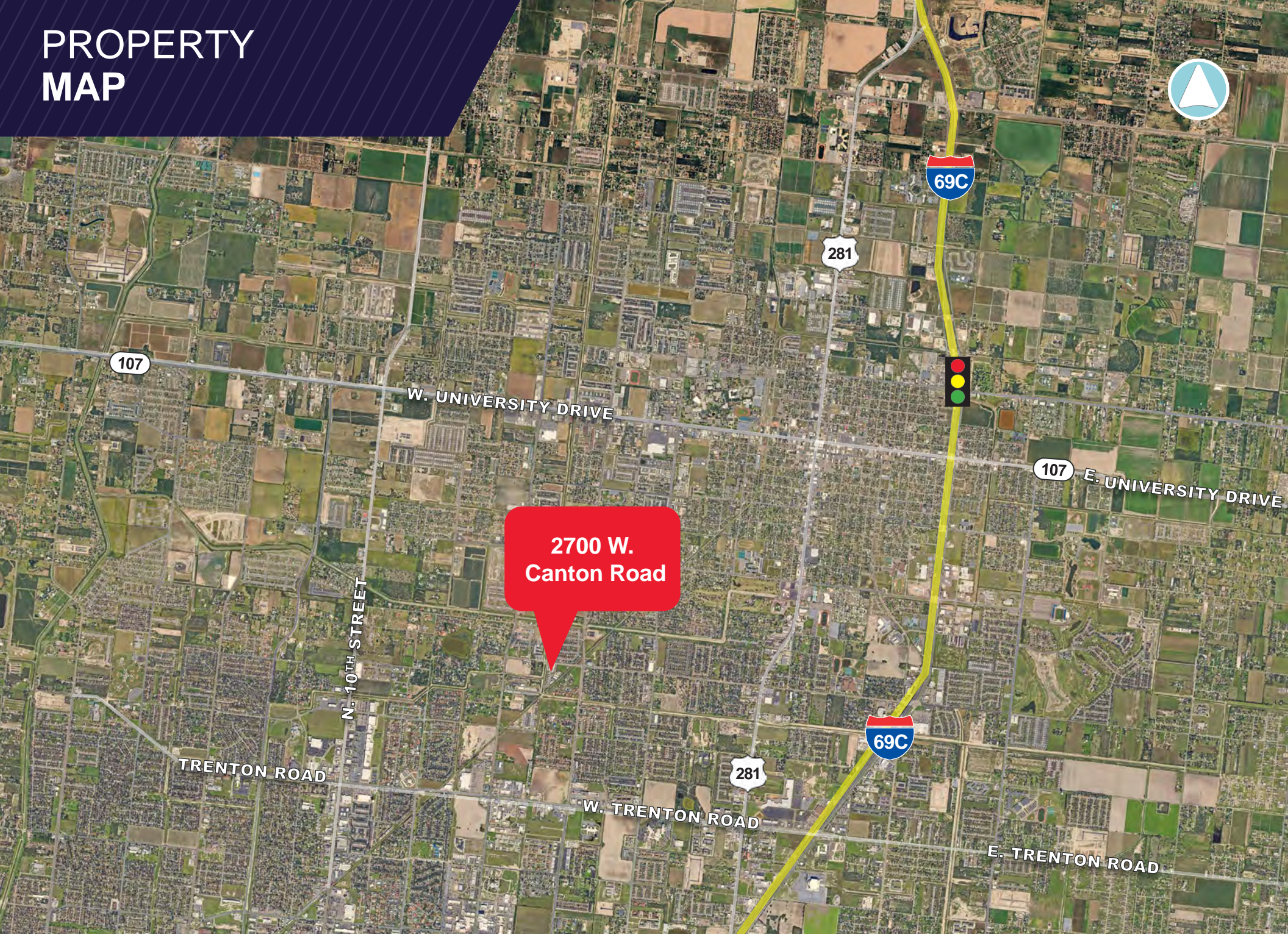
INTERIOR PICTURES



EXTERIOR PICTURES



PROPERTY MAP



CONTACT INFORMATION:

Carlos Marquez, SIOR

Senior Director

+1 210 896 2525

carlos.marquez@cushwake.com

Sergio Acosta

Senior Director

+1 210 305 4284

sergio.acosta@cushwake.com