

J.J. Hunter Properties

Jody Hunter ~ Broker-in-Charge ~ 224 Compton Drive Greenville, SC 29615 ~ (864) 292-5969

Commercial Sites - Intersection of Halton and Mall Connector

Area Features

- Situated near Gateway to Greenville (intersection of I-85 and I-385)
- Located near both Bon Secours and Prisma Eastside hospitals as well as other medical facilities along the Halton-Patewood Connector.
- Verdae mid-town residential/commercial development.
- Direct access between Haywood and Woodruff Road retail corridors

Location Features (see attached locator map)

- TMS# 0260.00-01-013.05 (Parcel C) available
- Parcels A and B sold in 2023.
- Zoned BG within the City of Greenville.
- All utilities on site or available

Mall Connector at Halton

Haywood Mall

Fluor Daniel Campus

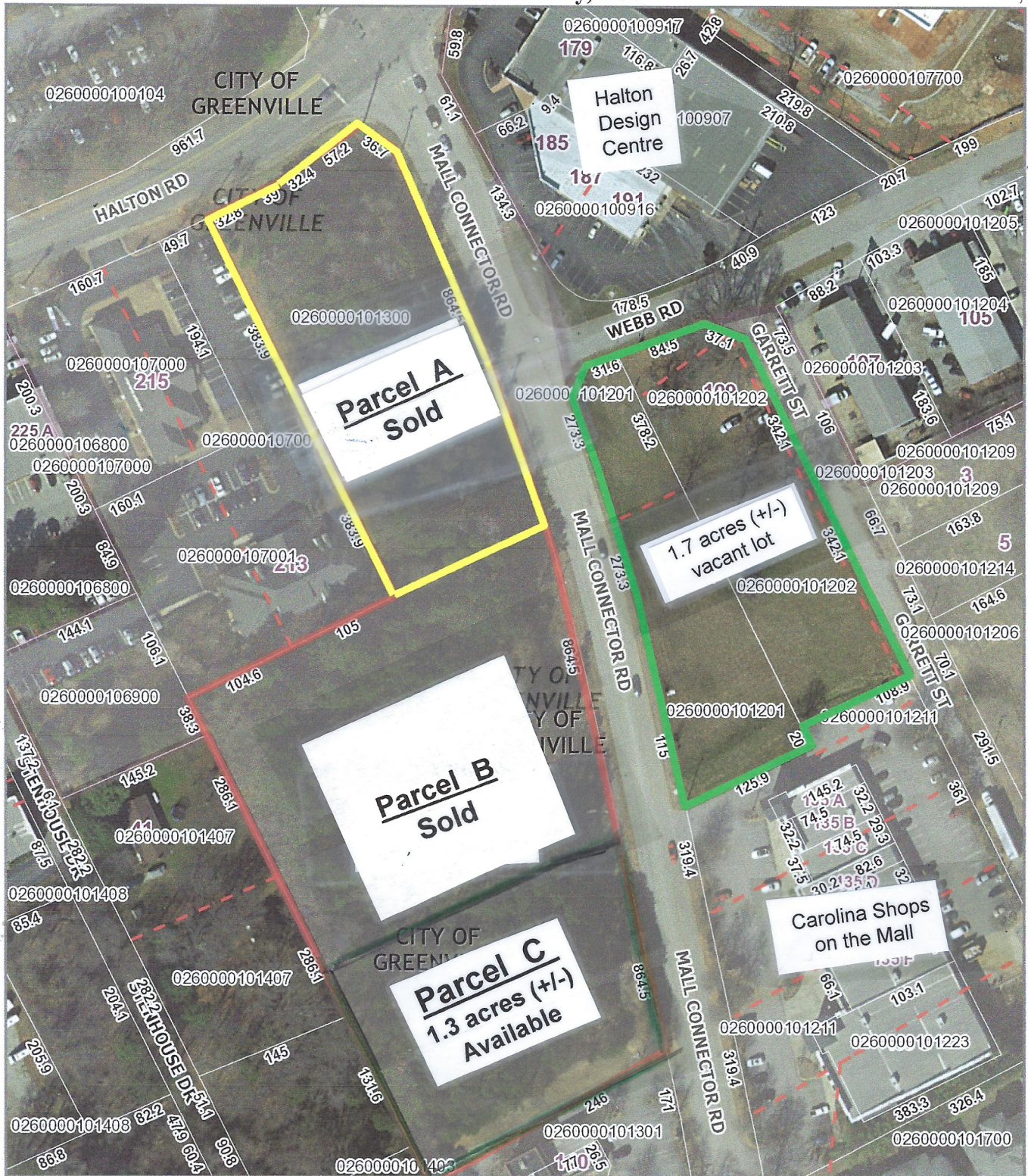
SITE

Verdae Development

Magnolia Park



Greenville County, SC



Disclaimer: This Map is not a LAND SURVEY and is for reference purposes only. Data contained in this map are prepared for the inventory of Real Property found within this jurisdiction, and are compiled from recorded deeds, plats, and other public records. Users of this map are hereby notified aforementioned public primary information sources should be consulted for verification of the information contained in this map. Greenville County assumes no legal responsibility for the information contained in this map.



Map Scale
 1 inch = 133 feet
 5/3/2022

Greenville County, SC



Disclaimer: This Map is not a LAND SURVEY and is for reference purposes only. Data contained in this map are prepared for the inventory of Real Property found within this jurisdiction, and are compiled from recorded deeds, plats, and other public records. Users of this map are hereby notified aforementioned public primary information sources should be consulted for verification of the information contained in this map. Greenville County assumes no legal responsibility for the information contained in this map.



Map Scale
1 inch = 133 feet
5/31/2023

Parcel B sold

**Available
Parcel C
(+/- 1.3 acres)**

Corner of Halton & Mall Connector

Parcel A sold

Marketing by Jody Hunter- JJ Hunter Properties
Conceptual Drawing Only - Not a survey
Connectivity between Parcels A, B, C
Effort is made to ensure accuracy of data
but not responsible for errors or omissions.
Prices are subject to change without notice.

Mall Connector Road

Driveway

Halton Road

Common Entrance

Common Entrance

MEDICAL OFFICE
22,912 SF ±
(2-STORY)
FFE = 997.5

FUTURE OFFICE BLDG
3-STORY
ASSUMED BY 1/2"
(87 TO MEET BUILD-TO REQUIREMENTS)
2640 SF FLOOR & 7800 SF TOTAL

NEW RETAIL OFFICE BLDG
3-STORY
ASSUMED BY 1/2"
(87 TO MEET BUILD-TO REQUIREMENTS)
11,040 SF TOTAL

RETAIL OFFICE BLDG
3-STORY
ASSUMED BY 1/2"
(87 TO MEET BUILD-TO REQUIREMENTS)
11,040 SF TOTAL

