



Up to 75,000 SF Contiguous Available

2,048 - 75,635 SF
CLASS A OFFICE SPACE

12470
Telecom Dr

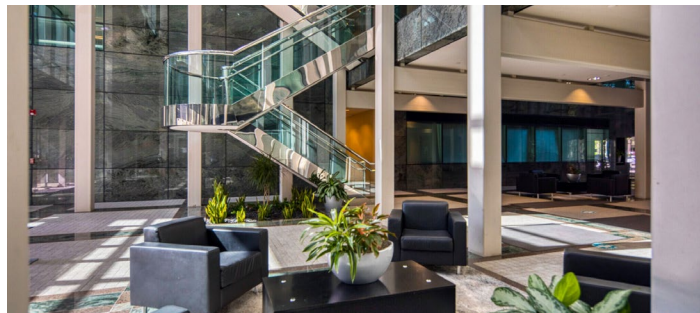
Tampa, Florida 33637

Property Overview

Cardinal Point at Riverside is a five-story, 172,800-square-foot Class A office building situated along the northern shores of the Hillsborough River within Tampa Telecom Park. Tampa Telecom Park is a 326-acre master-planned mixed-use business park in Northeast Tampa's Temple Terrace area, featuring office, medical, retail, and hospitality developments near the University of South Florida and I-75.

Property Features

BUILDING TYPE:	Office
YEAR BUILT:	1989
BUILDING HEIGHT:	5 Stories
BUILDING SIZE:	172,800 SF
BUILDING CLASS:	A
AVG. FLOOR SIZE:	34,560 SF
CEILING HEIGHT:	15'
PARKING:	681 Spaces



Contacts

KC Tenukas
813.212.0009
kc.tenukas@streamrealty.com

Trevor Harris
813.212.0008
trevor.harris@streamrealty.com

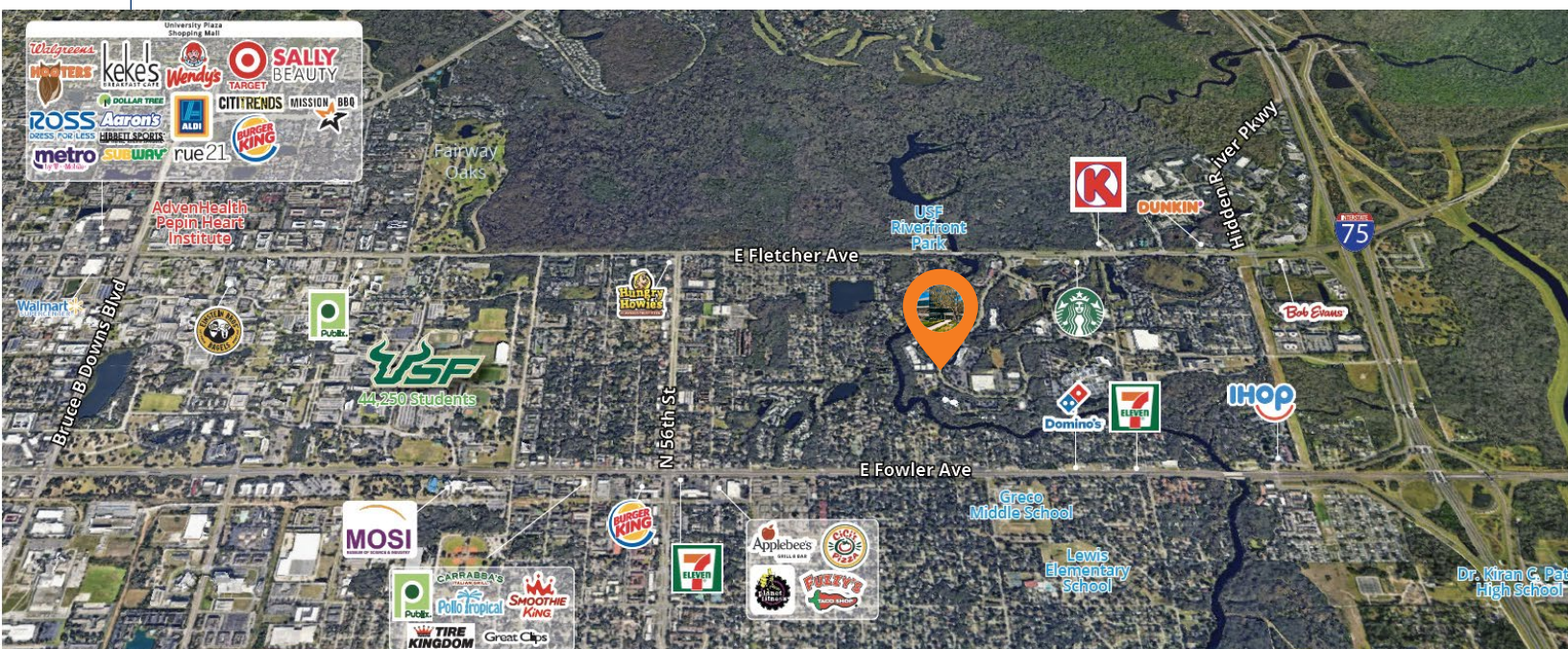




12470 Telecom Dr

Class A Office Space Availabilities

FLOOR	SUITE	SF AVAILABLE
2nd Floor	Suite 200 W	17,793 SF
2nd Floor	Suite 200 E	11,892 SF
2nd Floor	Suite 250 E	5,767 SF
3rd Floor	Suite 300 E	17,658 SF
3rd Floor	Suite 300 W	15,342 SF
4th Floor	Suite 400 E	18,098 SF
4th Floor	Suite 400 W	18,098 SF
5th Floor	Suite 500 E	18,098 SF



Location Overview

- Located in the heart of Tampa's Northeast submarket.
- Excellent accessibility for employees throughout the entire Tampa Bay region.
- Minutes away from the University of South Florida.
- Offers great access to I-275, I-75, and U.S. Highway 301

Telecom Park Key Tenants



Contacts

KC Tenukas
813.212.0009
kc.tenukas@streamrealty.com

Trevor Harris
813.212.0008
trevor.harris@streamrealty.com

