

OFFICE PROPERTY FOR SUBLEASE

1,400 SF Executive Office Suite at Beck Office Center

28345 BECK RD
SUITE 205
WIXOM, MI 48393



1,400 SF office for sublease

Floor-to-ceiling windows

Restaurant and ATM on-site

On-site management

Excellent freeway access



P.A. COMMERCIAL
Corporate & Investment Real Estate

BECK OFFICE CENTER

28345 BECK RD, WIXOM, MI

// EXECUTIVE SUMMARY



OFFERING SUMMARY

Available SF:	1,396 SF
Building Size:	111,715 SF
Lease Rate:	\$17.75 SF/yr (MG)
Zoning:	OS2
Lot Size:	5.61 Acres
Market:	Detroit
Submarket:	Central I-96 Corridor
Traffic Count:	25,729

PROPERTY OVERVIEW

Beck Office Center is a beautiful 4-story office building that features beautiful floor-to-ceiling windows and high-quality finishes throughout. There are excellent on-site amenities including on-site management, a restaurant, an ATM, and ample parking. There is currently a 1,400 SF second-floor suite available for sublease that was previously occupied by a mortgage lender. The space features a common area, private offices, a small conference room, and a kitchenette. The sublease can be terminated on 3/31/2025.

LOCATION OVERVIEW

Excellent location within the Beck Business Center complex less than one mile from the I-96 and Beck Rd interchange with easy access to other highway entrance points. Many businesses, gas stations, restaurants & major retailers are close by including Twelve Oaks Mall, Target, Meijer, Sam's Club, Home Depot, and Kroger.

PROPERTY HIGHLIGHTS

- 1,400 SF office for sublease
- Floor-to-ceiling windows
- Many building amenities including a restaurant and ATM
- On-site management
- Excellent freeway access

OFFICE PROPERTY FOR LEASE

BECK OFFICE CENTER

28345 BECK RD, WIXOM, MI

// ADDITIONAL PHOTOS



P.A. COMMERCIAL
Corporate & Investment Real Estate

26555 Evergreen Road, Suite 1500 • Southfield, MI 48076

FOR MORE INFORMATION CONTACT:

BRIANNA JOHNSTON Associate

brianna@pacommercial.com (P) 248.663.0507 (C) 419.605.8579

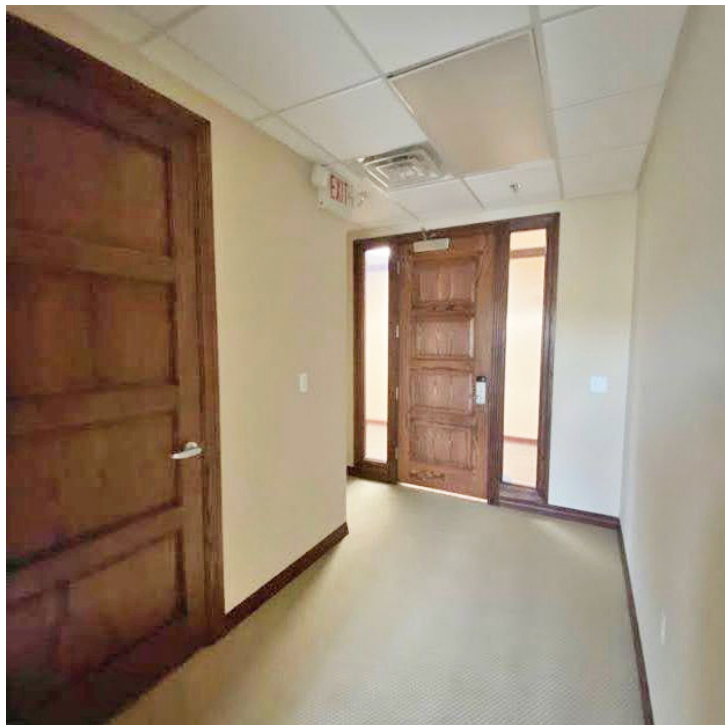
We obtained the information above from sources we believe to be reliable. However, we have not verified its accuracy and make no guarantee, warranty or representation about it. It is submitted subject to the possibility of errors, omissions, change of price, rental or other conditions, prior sale, lease or financing, or withdrawal without notice. We include projections, opinions, assumptions or estimates for example only, and they may not represent current or future performance of the property. You and your tax and legal advisors should conduct your own investigation of the property and transaction.

OFFICE PROPERTY FOR LEASE

BECK OFFICE CENTER

28345 BECK RD, WIXOM, MI

// ADDITIONAL PHOTOS



OFFICE PROPERTY FOR LEASE

BECK OFFICE CENTER

28345 BECK RD, WIXOM, MI

// ADDITIONAL PHOTOS



P.A. COMMERCIAL
Corporate & Investment Real Estate

26555 Evergreen Road, Suite 1500 • Southfield, MI 48076

FOR MORE INFORMATION CONTACT:

BRIANNA JOHNSTON Associate

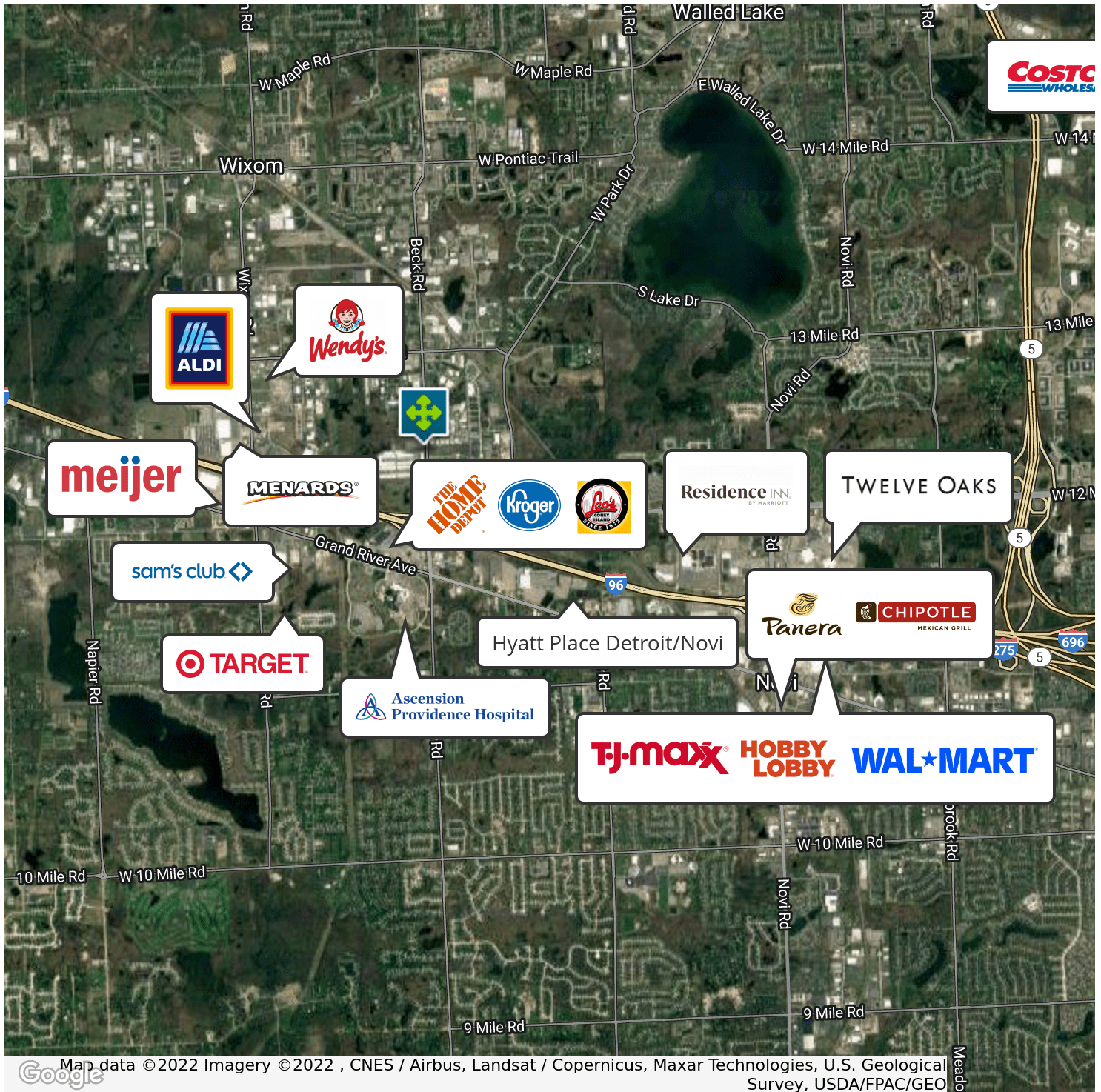
brianna@pacommercial.com (P) 248.663.0507 (C) 419.605.8579

We obtained the information above from sources we believe to be reliable. However, we have not verified its accuracy and make no guarantee, warranty or representation about it. It is submitted subject to the possibility of errors, omissions, change of price, rental or other conditions, prior sale, lease or financing, or withdrawal without notice. We include projections, opinions, assumptions or estimates for example only, and they may not represent current or future performance of the property. You and your tax and legal advisors should conduct your own investigation of the property and transaction.

BECK OFFICE CENTER

28345 BECK RD, WIXOM, MI

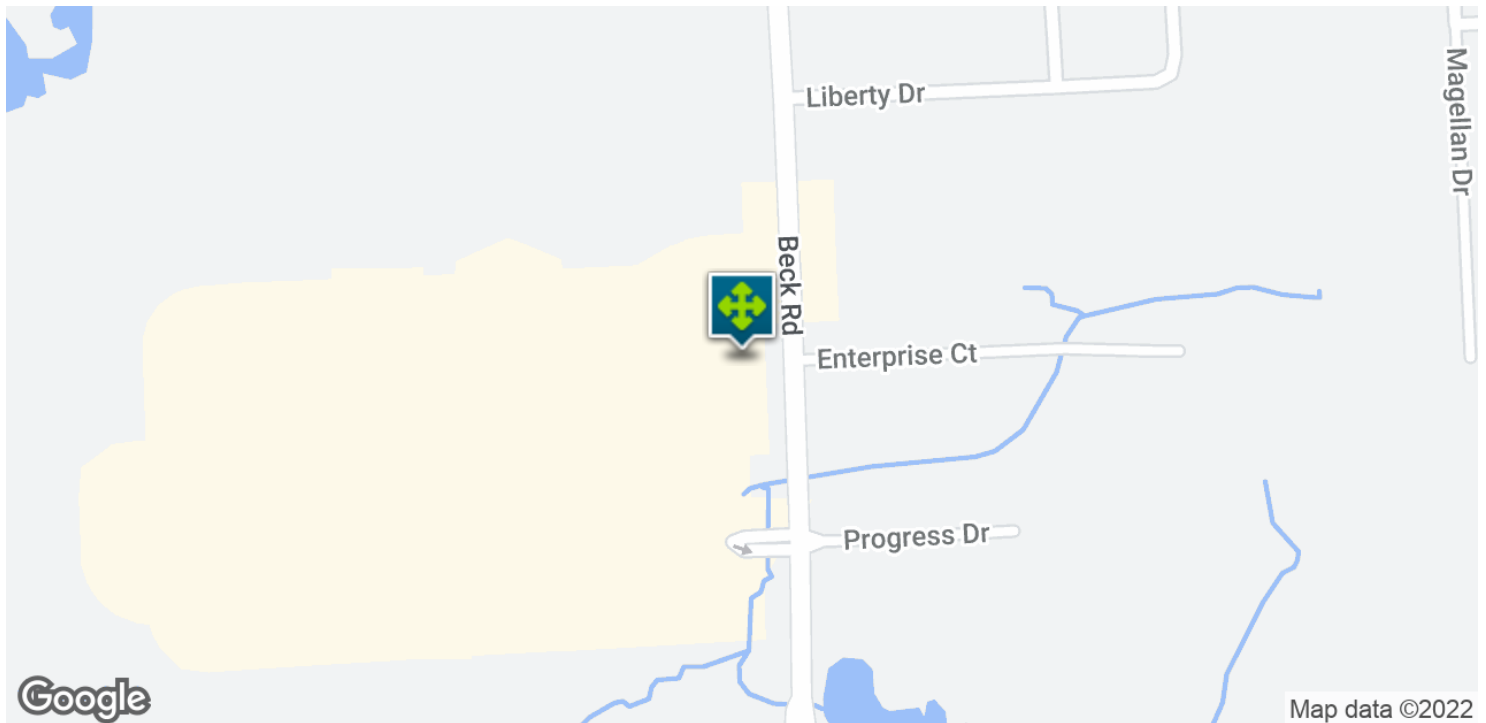
// RETAILER MAP



BECK OFFICE CENTER

28345 BECK RD, WIXOM, MI

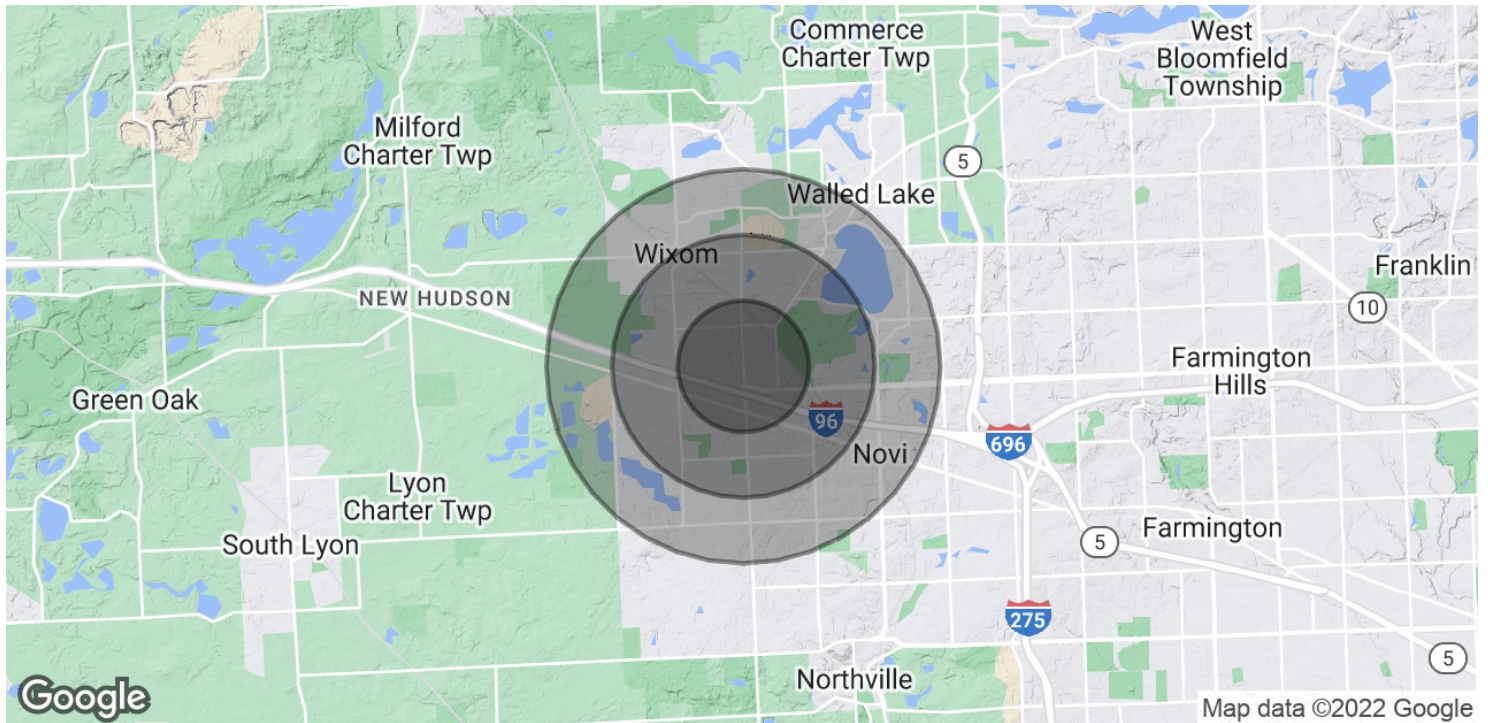
// LOCATION MAP



BECK OFFICE CENTER

28345 BECK RD, WIXOM, MI

// DEMOGRAPHICS MAP & REPORT



POPULATION

	1 MILE	2 MILES	3 MILES
Total Population	2,024	18,903	44,131
Average Age	38.7	35.0	37.2
Average Age (Male)	39.6	36.4	37.0
Average Age (Female)	37.6	33.1	36.7

HOUSEHOLDS & INCOME

	1 MILE	2 MILES	3 MILES
Total Households	935	9,188	18,798
# of Persons per HH	2.2	2.1	2.3
Average HH Income	\$107,724	\$95,427	\$109,505
Average House Value	\$296,829	\$184,387	\$248,782

* Demographic data derived from 2020 ACS - US Census