

1152 15TH STREET, NW



SUBLEASE OPPORTUNITY IN THE HEART OF EAST END



SUITE 800

5,000 - 18,575 SF
(Will Divide)

RATE

\$37.00 - \$42.00 PSF

TERM

Through July 2029

BUILDING FEATURES



Bike
Room



Easy Metro
Access



Rooftop
Terrace



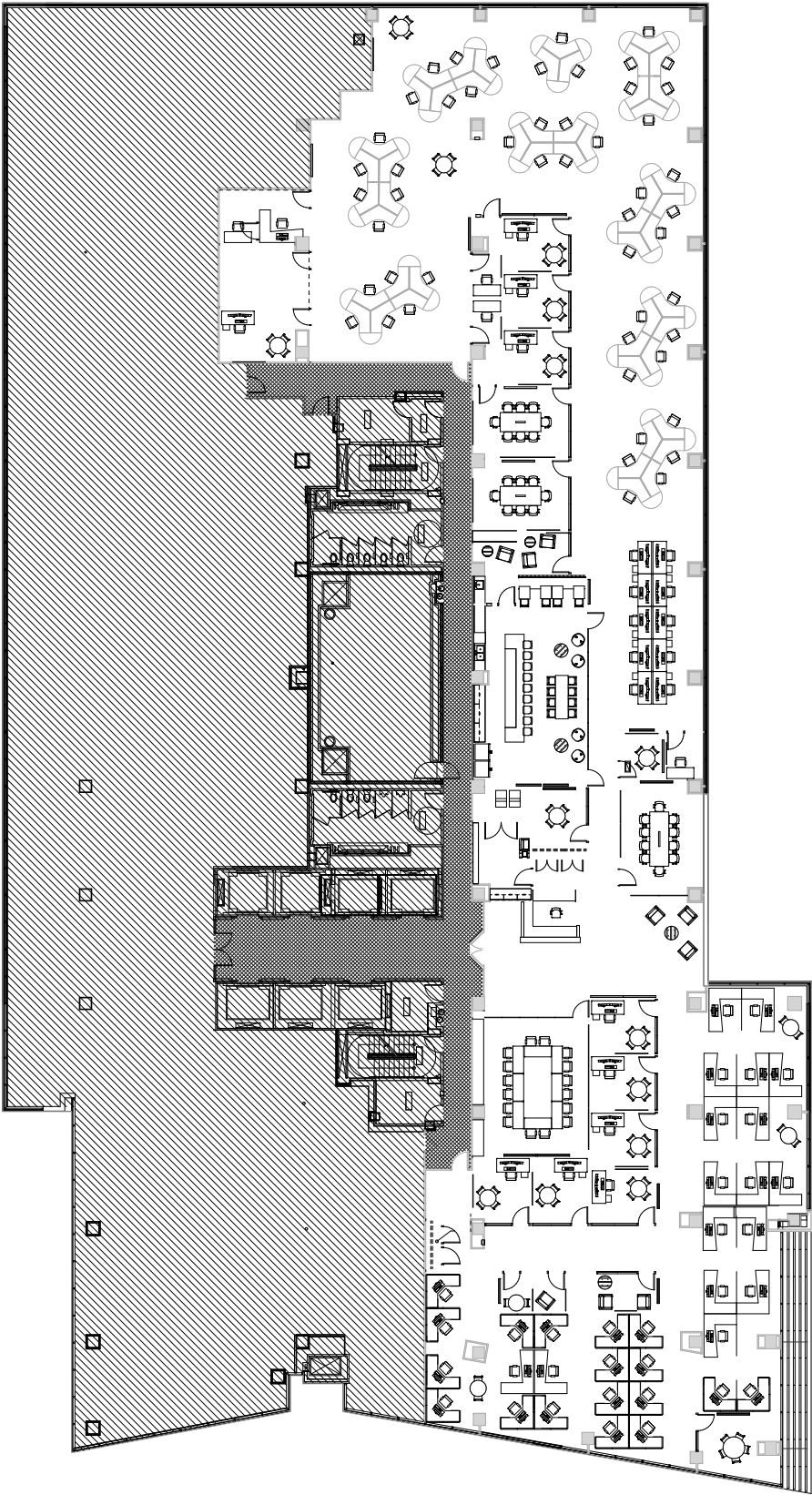
LEED Gold
Certification

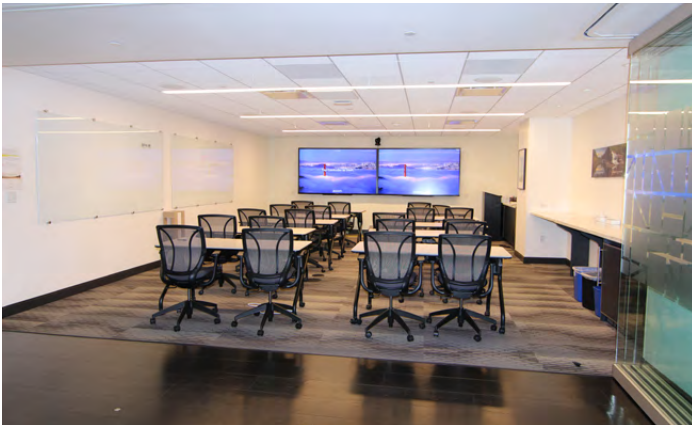


Fitness
Center



Views of Monument
& National Cathedral





2000 K Street NW, Suite 1000,
Washington, DC 20006
202.775.7000

FOR INFORMATION OR INQUIRIES:

MICHAEL GOLDMAN

michael.goldman@transwestern.com / 202.706.6201

TYLER MARSHALL

tyler.marshall@transwestern.com / 202.835.1208

JIMMY CONNOR

jimmy.connor@transwestern.com / 202.617.2141