



TRI STATE
COMMERCIAL®
REAL ESTATE EXPERTS

For Lease



Brand New Community Facility Space

2,000 SF

1000 Kelly St • Bronx • NY • For Pricing

Call: 718-437-6100

Shlomi Bagdadi
📞 718.437.6100
sb@tristatecr.com

Dov Bleich
📞 718.437.6100 x111
Dov.B@TriStateCR.com



Location Overview

Located in the Longwood neighborhood of the Bronx between Westchester Ave & E 165th St near the Intervale Ave subway station.

Nearest Transit: 2 & 5 trains at Intervale Ave and the BX4 & BX6 bus lines.

Nearby tenants include Fine Fare Supermarkets, Dunkin', Planet Fitness, Burger King, SNIPES, Five Below, Taco Bell, Fabco Shoes, GameStop, Chase Bank, Western Beef Supermarket, Family Dollar, and more!

Main Highlights

- ▶ Brand new construction
- ▶ Private entrance for the Tenant
- ▶ Private elevator for the Tenant directly into the space
- ▶ ADA accessible with two means of egress
- ▶ All glass windows with tons of sunlight
- ▶ Modern designs
- ▶ Storage and parking available



31,286 SF
Total Building Size



7,006 SF
Lot Size

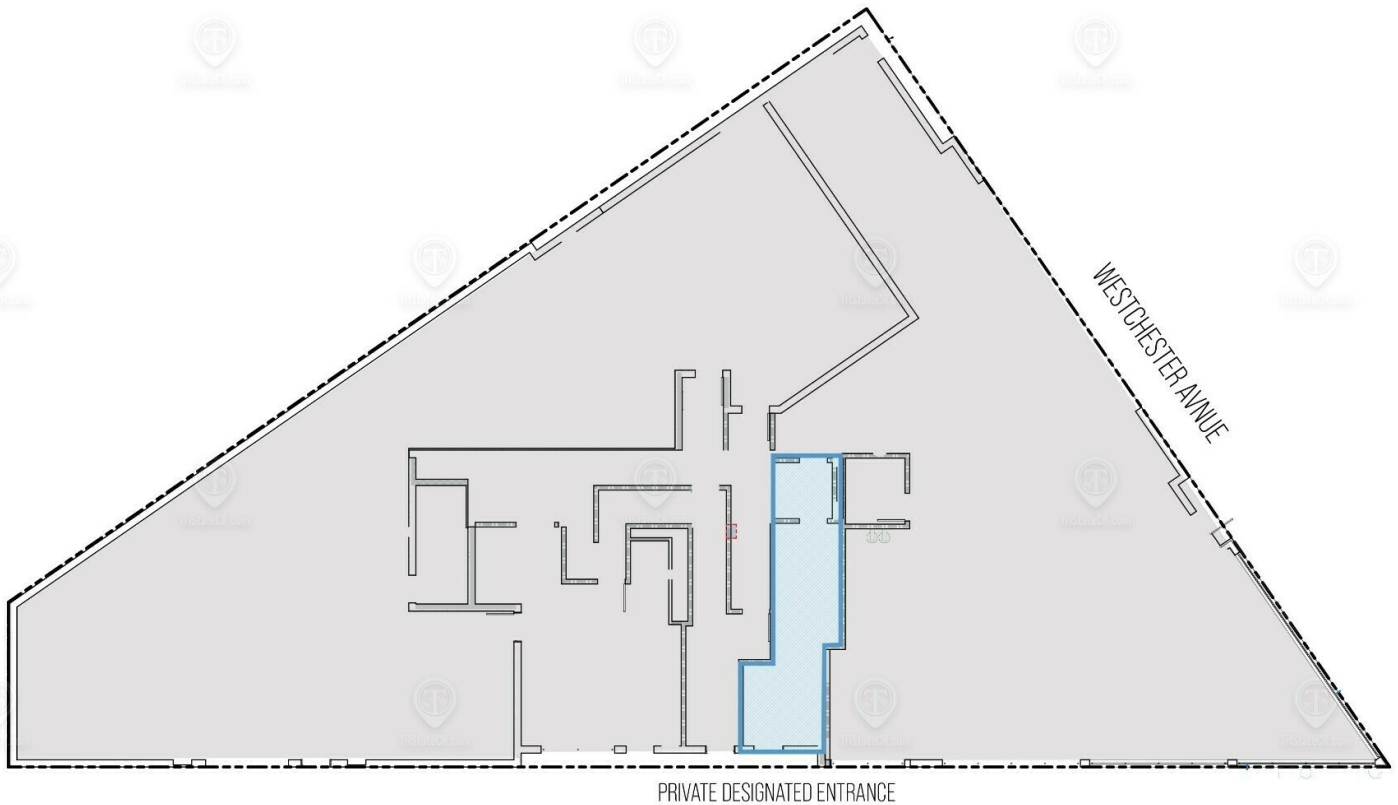
FOR LEASE • 2,000 SF • For Pricing

Call: 718-437-6100

Shlomi Bagdadi
☎ 718.437.6100
sb@tristatecr.com

Dov Bleich
☎ 718.437.6100 x111
Dov.B@TriStateCR.com

Broker is relying on Landlord or other Landlord-supplied sources for the accuracy of said information and has no knowledge of the accuracy of it. Broker makes no representation and/or warranty, expressed or implied, as to the accuracy of such information.



1000 KELLY STREET

GROUND FLOOR

TOTAL AVAILABLE SPACE: 2,000 SF

ALL SQUARE FOOTAGES
ARE APPROXIMATE

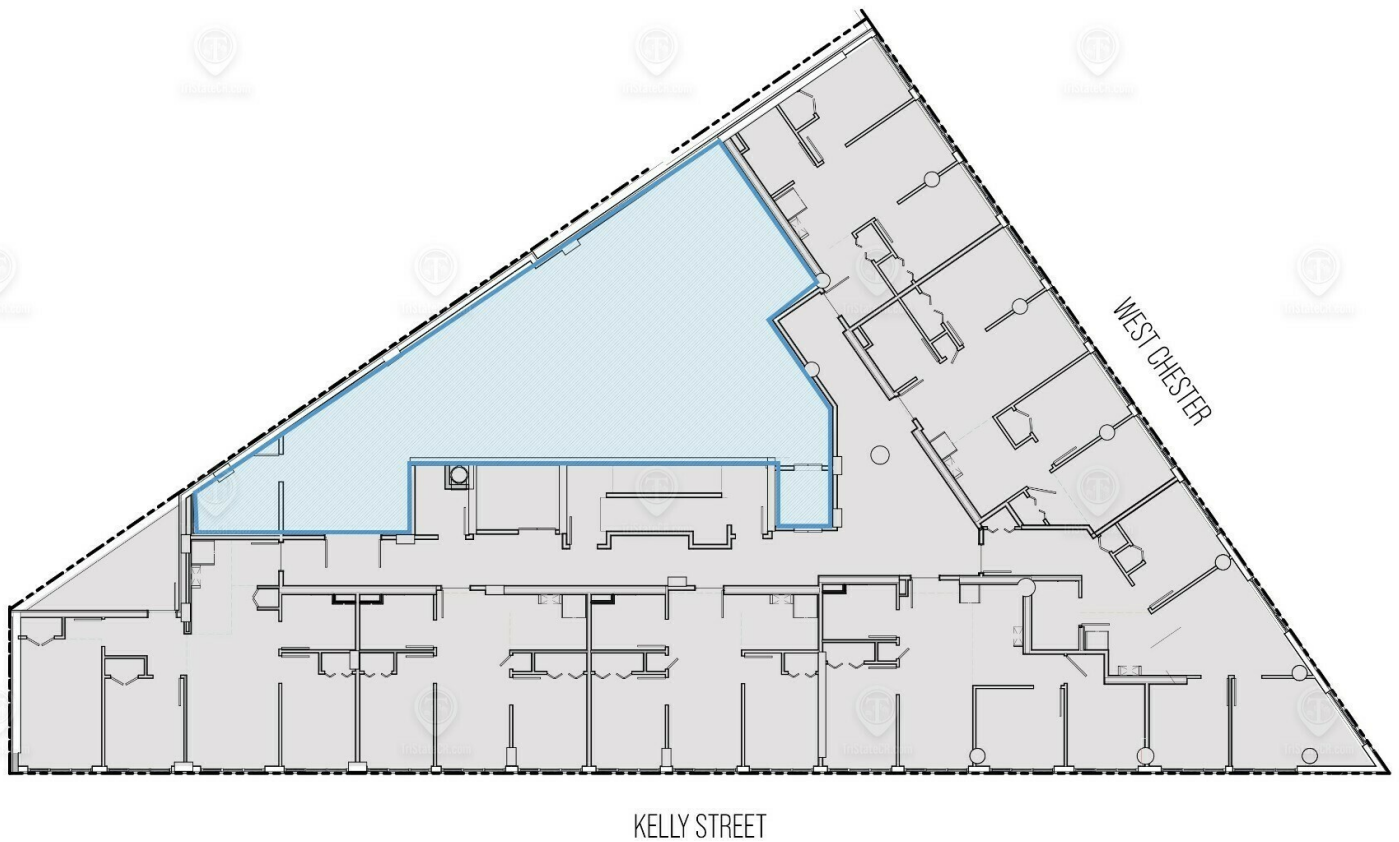
FOR LEASE • 2,000 SF • For Pricing

Call: 718-437-6100

Shlomi Bagdadi
☎ 718.437.6100
sb@tristatecr.com

Dov Bleich
☎ 718.437.6100 x111
Dov.B@TriStateCR.com

Broker is relying on Landlord or other Landlord-supplied sources for the accuracy of said information and has no knowledge of the accuracy of it. Broker makes no representation and/or warranty, expressed or implied, as to the accuracy of such information.



1000 KELLY STREET

SECOND FLOOR

TOTAL AVAILABLE SPACE: 2,000 SF

ALL SQUARE FOOTAGES
ARE APPROXIMATE

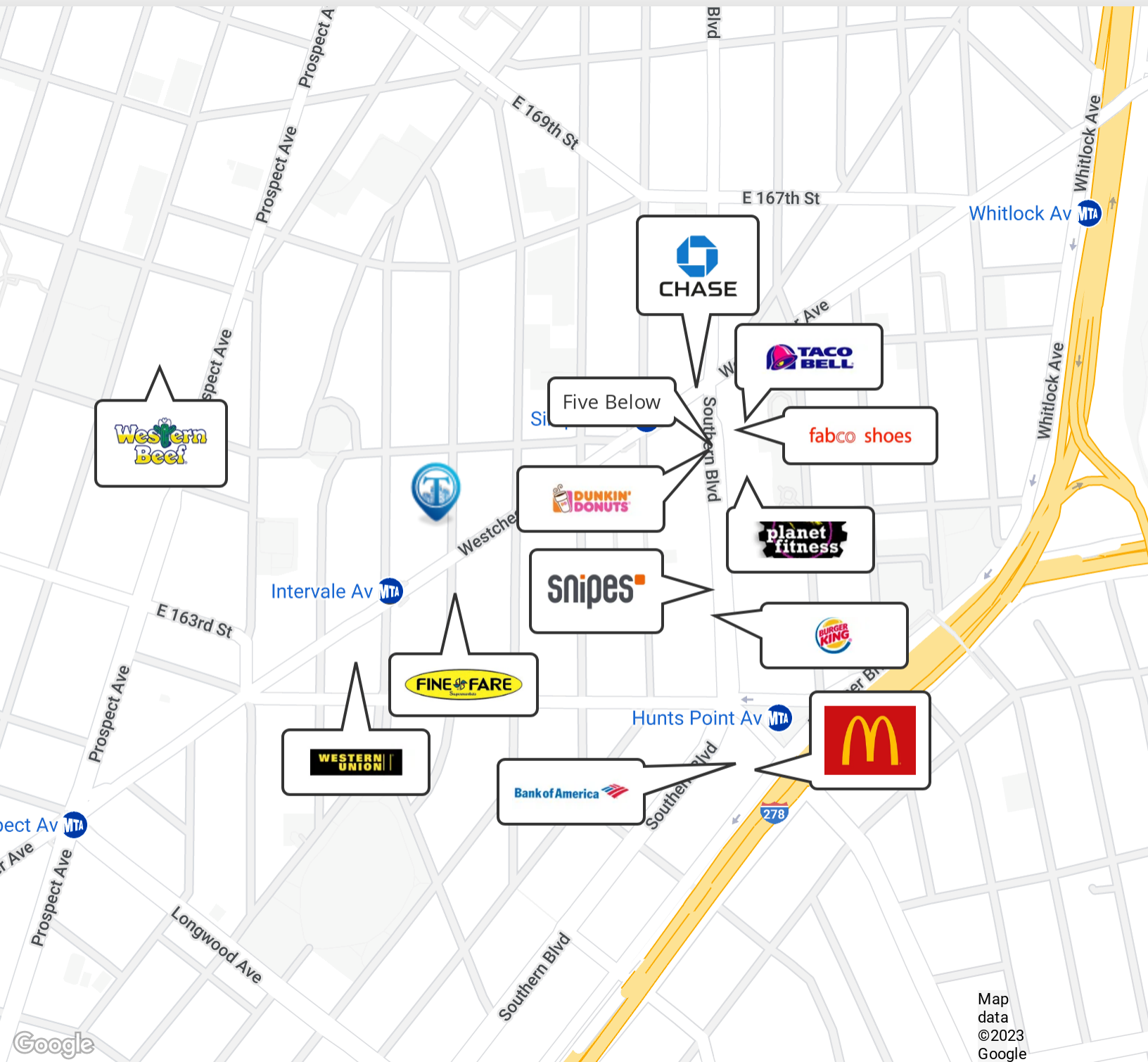
FOR LEASE • 2,000 SF • For Pricing

Call: 718-437-6100

Shlomi Bagdadi
☎ 718.437.6100
sb@tristatecr.com

Dov Bleich
☎ 718.437.6100 x111
Dov.B@TriStateCR.com

Broker is relying on Landlord or other Landlord-supplied sources for the accuracy of said information and has no knowledge of the accuracy of it. Broker makes no representation and/or warranty, expressed or implied, as to the accuracy of such information.



Map data
©2023
Google

FOR LEASE • 2,000 SF • For Pricing

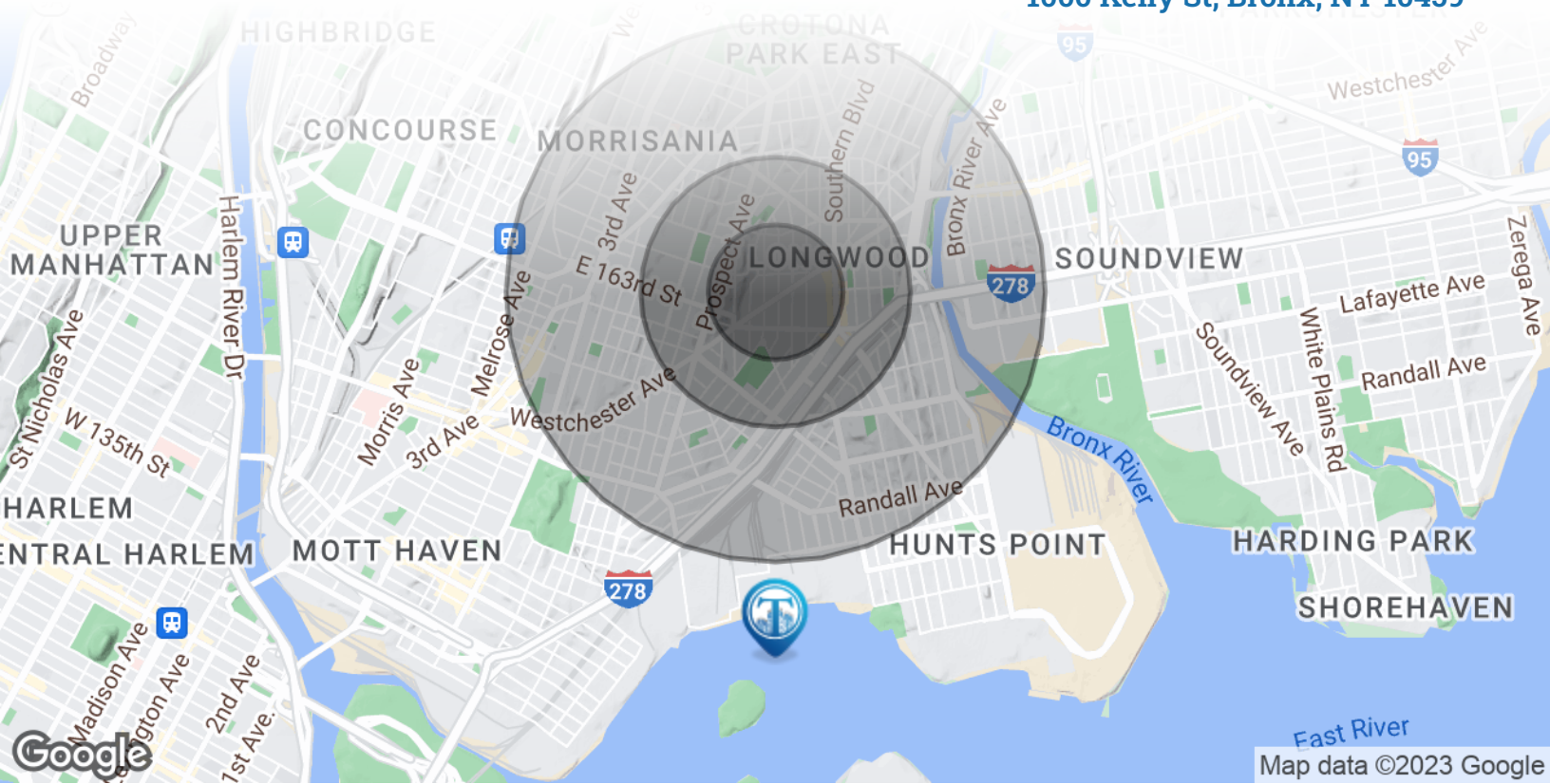
Call: 718-437-6100

Shlomi Bagdadi
718.437.6100
sb@tristatecr.com

Dov Bleich
718.437.6100 x111
Dov.B@TriStateCR.com

Broker is relying on Landlord or other Landlord-supplied sources for the accuracy of said information and has no knowledge of the accuracy of it. Broker makes no representation and/or warranty, expressed or implied, as to the accuracy of such information.

1000 Kelly St, Bronx, NY 10459



POPULATION	0.25 MILES	0.5 MILES	1 MILE
Total Population	13,092	49,010	165,300
Average Age	32.2	32.6	32.4
Average Age (Male)	30.5	29.2	30.0
Average Age (Female)	35.5	36.0	34.7
HOUSEHOLDS & INCOME	0.25 MILES	0.5 MILES	1 MILE
Total Households	4,765	18,588	61,642
# of Persons per HH	2.7	2.6	2.7
Average HH Income	\$41,607	\$44,135	\$44,467
Average House Value	\$198,954	\$160,618	\$142,692



165,300

People within 1 Mile



\$44,467

Avg Household Income

FOR LEASE • 2,000 SF • For Pricing

Call: 718-437-6100

Shlomi Bagdadi
 📞 718.437.6100
 sb@tristatecr.com

Dov Bleich
 📞 718.437.6100 x111
 Dov.B@TriStateCR.com

Broker is relying on Landlord or other Landlord-supplied sources for the accuracy of said information and has no knowledge of the accuracy of it. Broker makes no representation and/or warranty, expressed or implied, as to the accuracy of such information.

For Lease



TriStateCR.com

2,000 SF | 1000 Kelly St |
Brand New Community Facility
Space for Lease

2,000 SF • For Pricing **Call: 718-437-6100**

1000 Kelly St • Bronx • NY

Shlomi Bagdadi
☎ 718.437.6100
sb@tristatecr.com

Dov Bleich
☎ 718.437.6100 x111
Dov.B@TriStateCR.com