

FOR LEASE

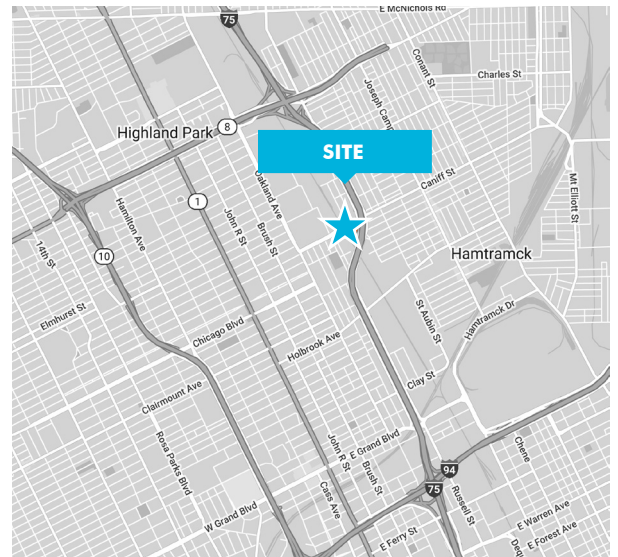
6.18 ACRES

1700 CANIFF, HAMTRAMCK, MI



PROPERTY FEATURES

- + Zoned Industrial and Commercial
- + Long term land lease available
- + Adjacent to I-75 with immediate access
- + Many possible uses



CONTACT US

MATT OSIECKI

Vice President
+1 248 351 2079
matt.osiecki@cbre.com

GREGG LOICHINGER

Vice President
+1 248 351 2025
gregg.loichinger@cbre.com

DRAFT

www.cbre.us/detroit

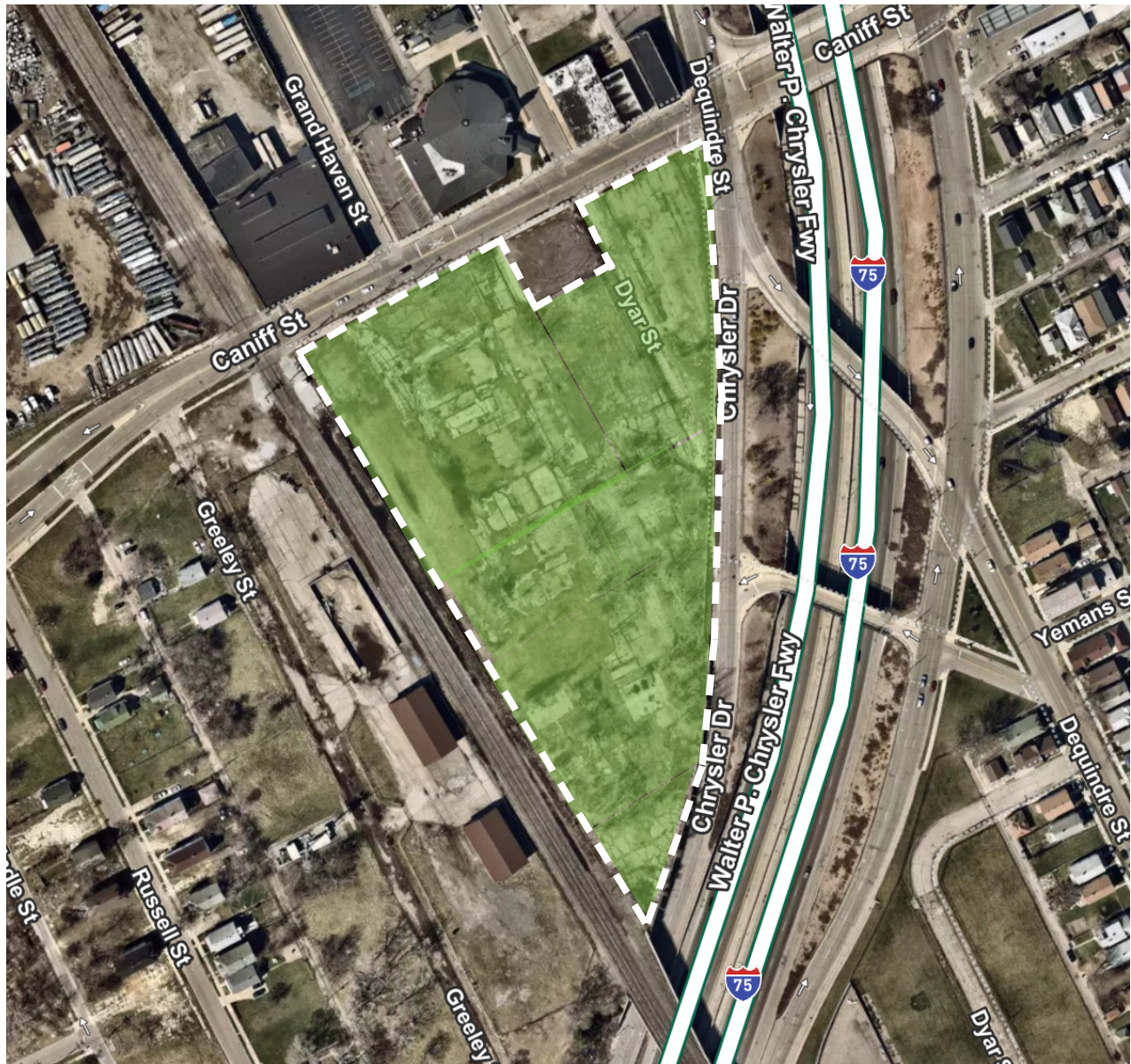
CBRE

FOR LEASE

1700 CANIFF
HAMTRAMCK, MI



SITE AERIAL



© 2021 CBRE, Inc. All rights reserved. This information has been obtained from sources believed reliable, but has not been verified for accuracy or completeness. You should conduct a careful, independent investigation of the property and verify all information. Any reliance on this information is solely at your own risk. CBRE and the CBRE logo are service marks of CBRE, Inc. All other marks displayed on this document are the property of their respective owners, and the use of such logos does not imply any affiliation with or endorsement of CBRE. Photos herein are the property of their respective owners. Use of these images without the express written consent of the owner is prohibited.

DRAFT



PROPERTY OVERVIEW

- + County: Wayne
- + Lease Rate: \$600,000 - Long term lease
- + Dimensions: IRR
- + Zoning: Industrial and Commercial
- + Divisible (Min/Max): Not Divisible
- + Taxes: \$17,302/Year (2020)



LAND & STRUCTURES

Lot/Land Size:	6.18 Acres	Real Estate Taxes:	\$17,302/Year (2020)
Min/Max Available:	6.18	Current Assessments:	TBD
Zoning:	Industrial and Commercial	Industrial Park:	No
Parcel Number:	Multiple - See Below	Will Build:	No
Frontage:	TBD	Water:	City
Depth:	TBD	Sewer:	City
% Improved:	0%	Electric:	DTE
Easements:	TBD	Gas:	Consumers
Topography:	Flat	Streets:	Caniff Street & Chrysler Drive
Dimensions:	IRR	Sidewalks:	Available
Rail Served:	Adjacent without a spur	Curbs:	Yes
Terms:	Long term land lease		



COMMENTS

- + 6.18 acre parcel of industrial zoned land adjacent to I-75 between Davison Fwy and I-94
- + Seller is offering a long term land lease for a 1 time payment of \$600,000



CONTACT US

MATT OSIECKI

Vice President
+1 248 351 2079
matt.osiecki@cbre.com

GREGG LOICHINGER

Vice President
+1 248 351 2025
gregg.loichinger@cbre.com

CBRE, Inc. | LICENSED REAL ESTATE BROKER

We obtained the information above from sources we believe to be reliable. However, we have not verified its accuracy and make no guarantee, warranty or representation about it. It is submitted subject to the possibility of errors, omissions, change of price, rental or other conditions, prior sale, lease or financing, or withdrawal without notice. We include projections, opinions, assumptions or estimates for example only, and they may not represent current or future performance of the property. You and your tax and legal advisors should conduct your own investigation of the property and transaction.

DRAFT